

once

BOOK BY
ENDA WALSH

MUSIC AND LYRICS BY
GLEN HANSARD AND
MARKÉTA IRGLOVÁ

DIRECTED BY
MARIANNE GALLOWAY

13
SEP
THRU
OCT
07
2018



#t3once

#t3fallingslowly



GARTH WILLIAMS: ILLUSTRATOR OF THE CENTURY

SEPT 8 – JAN 27
DUPREE LOBBY

FREE EXHIBIT @IAC



Free guided gallery tours are offered every
Thursday @ 6:30 p.m. and every Sunday @ 2:30 p.m.
Call 972.252.7558 for more information.

Gallery Hours:
9 a.m. – 5 p.m. Monday, Tuesday, Wednesday and Friday;
9 a.m. – 8 p.m. Thursday; 10 a.m. – 5 p.m. Saturday
1 – 5 p.m. Sunday.

© Irving Arts Center 2018

Organized and toured by the
National Center for Children's
Illustrated Literature in Abilene, TX,
this exhibition presents original
work from 28 of Garth William's
most beloved books, including
Charlotte's Web, *The Little House
on the Prairie* and a number
Little Golden Books.

Leonard Marcus, curator of the
exhibition and one of the world's
leading writers about children's
books and the people who create
them, will speak about Garth
Williams on Sept. 22 at 2 p.m.
Talk followed by a reception and
book signing.

IRVING
ARTS
CENTER

It's worth the trip!
Open 7 days a week • Free parking
3333 N. MacArthur Blvd.
Irving, TX 75062
IrvingArtsCenter.com

DADA
Dallas Area Discovery Association

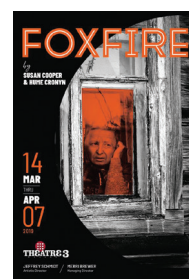
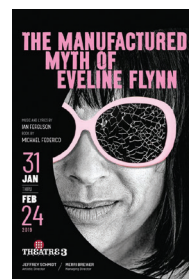


Smithsonian Affiliate

THEATRE 3
DALLAS

JEFFREY SCHMIDT / ARTISTIC DIRECTOR
MERRI BREWER / MANAGING DIRECTOR

2018-19 SEASON



SEASON TICKETS ON SALE NOW!

214.871.3300 x1
THEATRE3DALLAS.COM

ONCE IS MADE POSSIBLE BY...

Theatre Three is supported by its Board of Directors, by subscribers, by funds from the City of Dallas Office of Cultural Affairs, The Texas Commission on the Arts, TACA, Dallas Tourism Public Improvement District, and The Shubert Foundation. This project is supported in part by an award from the National Endowment for the Arts. A major contribution from the estate of Marlene Webb, a longtime subscriber, has established the Theatre Three Endowment Fund in support of the building and its equipment.

TACA
TRANSFORMING LIVES
THROUGH the ARTS



Office of Cultural Affairs
CITY OF DALLAS

THE SHUBERT
FOUNDATION INC.



Texas
Commission
on the Arts

DALLAS
Tourism Public Improvement District

ART WORKS.

National
Endowment
for the Arts
arts.gov

T3 PEOPLE

BOARD OF DIRECTORS

CHAIR Marion L. Brockette, Jr.

BOARD MEMBERS

Chad Barton, Suzanne Burkhead, Mike Cluff, Sid Curtis, Karen Davis, Laura V. Estrada, Sally Hansen, Harrison Herndon, Michael Jenkins, David G. Luther, Jr., Stacy E. Marshall, Chris Rajczi, Scott T. Williams, Rod Wilson

OCA LIAISON Linda Blase

ADVISORY BOARD John Strauss

HONORARY BOARD MEMBERS

Virginia Dykes, Gary W. Grubbs, John & Bonnie Strauss

ADMINISTRATION

ARTISTIC DIRECTOR Jeffrey Schmidt

MANAGING DIRECTOR Merri Brewer

DIRECTOR OF STRATEGIC MARKETING AND DATA ANALYSIS Kat Edwards

COMPANY MANAGER Sarah Barnes

DEVELOPMENT ASSOCIATE Charlie Beavers

PUBLICITY, MARKETING, CREATIVE & PLAYBILL DESIGN

SoloShoe Communications, LLC

CPA Ron King

BOOKKEEPER JaVonnix Nixon

HOUSEKEEPING Night Line Janitorial Services

2018-2019 CASTING DIRECTOR Richard Quadri

PRODUCTION

PRODUCTION MANAGER Lauren Volz

TECHNICAL DIRECTOR Jon Leitch

SCENIC PAINTER David Walsh

APPRENTICE STAFF Emily Ann Probus, Kaylor Winter-Roach

PRODUCTION CREW Max Overton, Caleb Pieterse

CUSTOMER SERVICE

PATRON SERVICES MANAGER Angelica Rollins

ASST. BOX OFFICE MANAGER/ASST. HOUSE MANAGER Samantha Grace

BOX OFFICE AGENTS

Bennett Chapple, Jazzay Jabbar, Isa Flores,

Wesley Farnsworth, Brenda Rebolgar

ON OTHER STAGES

STAGE WEST

AUG 30 - SEP 30 *An Octoroon*

DALLAS THEATER CENTER

SEP 28 - OCT 21 *Steel Magnolias*

KITCHEN DOG THEATER

OCT 4 - 28 *Radiant Vermin*

WINGSPAN THEATRE (Bath House Cultural Center)

OCT 5 - 21 *Occupant*

WATERTOWER THEATRE

OCT 12 - NOV 4 *A Doll's House*

CIRCLE THEATRE

OCT 18 - NOV 17 *Men on Boats*

DALLAS CHILDREN'S THEATER

OCT 19 - 28 *A Wrinkle In Time*

ARTIST ADVISORY BOARD

Maryam Obaidullah Baig, Dante Flores, Gretchen Elizabeth Smith, Montgomery Sutton, vickie washington

This playbill is a publication of Theatre Three, Inc. in support of *Once* (the second show in the 2018-19 season) on the Norma Young Arena Stage.

THEATRE THREE IS A PROUD
ASSOCIATE MEMBER OF



SAVE THE DATE!
North Texas Giving Day
9/20/2018



Theatre Three has Hearing Assistance devices which may be checked out without charge from the box office. These devices enhance the performance experience for audience members with any degree of hearing limitation. The box office personnel can provide you with the devices either before the show or at intermission. Theatre Three's staff and board are most grateful to donors Carolyn Wickwire and Dennis West, who provided the grant that allows us to offer this enhancement to our patrons.

THEATRE THREE'S 2018 - 2019 SEASON



Once

Book by Enda Walsh

Music & Lyrics by Glen Hansard & Markéta Irglová

Directed by Marianne Galloway

THE
NORMA
YOUNG
ARENA
STAGE

ARTISTIC STAFF

DIRECTOR

Marianne Galloway

ASSISTANT DIRECTOR

Micah Lyles

MUSIC DIRECTOR

Scott A. Eckert

SCENIC DESIGN

Clare Floyd DeVries

COSTUME DESIGN

Korey Kent

LIGHTING DESIGN

Leann Burns

SOUND DESIGN

Tyler Payne

CHOREOGRAPHER

Danielle Georgiou, PhD.

DIALECT COACH

Krista Scott

CAST

GUY

Ian Ferguson*

GIRL

Cora Grace Winstead**

BILLY

Matthew Cook

DA

Willy Welch*

EX-GIRLFRIEND

Katrina Kratzer

ŠVEC

Cory Kosel**

ANDREJ

Russell McCook*

RÉZA

Jo-Jo Steine**

BARUŠKA

Kelly Winstead Miyake

CAST CONT.

EAMON

Jake Nice

BANK MANAGER

Alex Branton**

EMCEE

Scott A. Eckert

IVONKA

Dotty Rico

* indicates members working under Actors' Equity Association contracts in this production.

** indicates a performer enrolled in the AEA membership candidate program.

PRODUCTION STAFF

STAGE MANAGER

Renee Dessommes*

ASSISTANT STAGE MANAGER

Lauren Volz*

PRODUCTION ASSISTANT

Emily Ann Probus

SOUND ENGINEER

Mark Howard

SPECIAL THANKS

Chaz Robitaille

Pocket Sandwich Theatre

Echo Theatre

Kris Ikejiri

Sam Bailey

ONCE is presented through special arrangement with Music Theatre International (MTI). All authorized performance materials are also supplied by MTI. www.MTIShows.com



The Director is a member of the
STAGE DIRECTORS AND CHOREOGRAPHERS
SOCIETY, a national theatrical labor union.

Please silence your cell phones and all electronic devices. The videotaping or making of electronic or other audio and/or visual recordings of this production or distributing recordings on any medium, including the internet, is strictly prohibited.



never trust a round pizza!

■ DIRECTOR'S NOTES

On the first night of rehearsal for this production of *Once*, my soul was pried wide open, and I was utterly enveloped in the most incredible first rehearsal experience I've ever had.

I looked around the room at an instant Family, hopelessly in love with each other, the story we were telling, and the music they filled the room with together. A very particular kind of childlike joy and magic seemed to bubble throughout the entire room. It was almost tangible.

I was heady and breathless, and I thought about how akin to falling in love it felt.

Glances sufficed to speak volumes about the depths of feelings that couldn't possibly be put into words.

I never wanted it to end.

I didn't want to leave.

■ BIOGRAPHIES

About the Playwrights/Musicians

Enda Walsh

Enda Walsh is an acclaimed playwright, screenwriter and director. His recent work includes the play *Arlington* and the opera *The Second Violinist* which both premiered at the Galway International Arts Festival in 2016 and 2017 respectively. He also worked on the new musical, *Lazarus*, with David Bowie, which opened at New York Theatre Workshop in December 2015. His work has been translated into many languages and has been performed internationally since 1996. In 2014 he received an Honorary Doctorate from Galway University. Enda is currently adapting and directing Max Porter's *Grief is the Thing with Feathers* for Complicite.

Glen Hansard

Glen Hansard is an award-winning musician with a host of real-life songs and lilting vocals that reflect a passion for his diverse influences. Film: *The Commitments* and *Once*. Albums: Didn't He Ramble, Rhythm and Repose, Strict Joy, the soundtrack of *Once* (Academy Award for Best Original Song, 'Falling Slowly'; Olivier award for Outstanding Musical Contribution), The Swell Season, The Cost, Burn the Maps, Set List, For the Birds, Dance the Devil, Fitzcarraldo and Another Love Song. Glen is currently touring the world supporting his latest solo album release *Between Two Shores*.

Markéta Irglová

Marketa Irglová is an Academy Award winning musician and actor born in the Czech Republic. Film: *Once* and *Milluji té*

I thought about how frequently my journey through this life has made me wonder if this World is actually Hell....but how being surrounded by such love reminded me that it couldn't possibly be.

I wanted everyone to feel what I was feeling.

I wanted to throw the doors of the theater open and let that Love and Magic and Beauty out into the world to heal the broken-hearted the way it was healing me. I truly believed that anyone who walked into the room would be immediately enveloped in that Love.

I thought about the inability of mere words to convey the beauty of experiencing that communion. I laughed at myself for trying to articulate something that could only truly be communicated by experiencing it.

Such transcendent experiences of Love exist in this world. How lucky I am to get to be a part of them, and share them with you.

-Marianne Galloway

Modre. Albums: Muna, Anar, The Swell Season, the soundtrack of *Once* (Academy Award for Best Original Song, 'Falling Slowly', Olivier award for Outstanding Musical Contribution), Strict Joy. Markéta is currently writing songs for her third solo album alongside various other musical projects for stage and screen. She is due to have her third baby in Iceland this year.

Artistic Staff Biographies

Marianne Galloway DIRECTOR

Marianne is a Dallas-based Director/Actor/Writer/Producer. She is the Director of the critically-acclaimed productions of Sherry Jo Ward's *Stiff* (currently touring the U.S.) and Jessica Cavanagh's *Self-Injurious Behavior* (Theatre Too). She appeared Off-Broadway as Elizabeth in the NYC Premiere of *Lone Star/Laundry and Bourbon*, and as the Woman

■ CAST & CREW BIOGRAPHIES

in Red in J.J. Abrams' miniseries of Stephen King's *11.22.63* (with James Franco). She will next appear onstage reprising her role as Harper in *Angels in America-Part 2: Perestroika* for Uptown Players at the Kalita Humphrey's Theater in October, 2018. Other local acting credits include *The Revolutionists* (Imprint Theatre), *Children of a Lesser God*, *Rabbit Hole* (Contemporary Theater of Dallas), *Lovers and Executioners* (Circle Theater), and *Silent Sky* (Watertower Theater). Local directing credits include *A Little Night Music* (T3), *Much Ado About Nothing* (Shakespeare Dallas), *The Receptionist* (Watertower), *Lawrence and Holloman* (Second Thought Theatre), *Waiting for Godot*, *Marisol*, *Rosencrantz and Guildenstern are Dead*, and *Slaughterhouse-Five* (Risk Theater Initiative). She has directed at New York's Cherry Lane Theater, and served as Assistant Director for Deaf West and Pasadena Playhouse. Awards/Nominations include multiple DFW Theater Critics Forum, Column, Dallas Theatre League, and Dallas Observer Reader's Choice Awards. Affiliations: Risk Theater Initiative (Founding Artistic Director), Stage Directors and Choreographers Society, Lincoln Center Directors Lab, Directors Lab West, Gideon's Feet (Board Member, www.gideonsfeet.org). Represented by Core Talent.

Micah Lyles

ASSISSTANT DIRECTOR
Micah is happy to be back at Theatre Three, after serving as AD for *Self-Injurious Behavior* and *A Little Night Music*. Since co-founding Risk Theater Initiative in 2002 with Marianne Galloway, Micah has directed *The Zoo Story*, served as assistant director on *Waiting for Godot*, *Rosencrantz and Guildenstern are Dead*, and *Angels in America: Millennium Approaches*, and co-directed *Antarctica* for the Out of the Loop Festival.

Scott A. Eckert

MUSIC DIRECTOR/EMCEE
Scott returns to T3 having provided music direction for *The Hot Mikado*, *A Little Night Music*, and *The Last One Nighter On The Death Trail*. For over 30 years he has worked extensively throughout the DFW area, and has been recognized by the Dallas Theater League and The DFW Theater Critics Forum for his work both as music director and playwright.

Clare Floyd DeVries SCENIC DESIGN

Clare Floyd DeVries is an architect and set designer. She is excited to design her first show for Theatre Three! Her work has appeared on other DFW stages, including: Watertower Theater, Circle Theater, Casa Manana, and Shakespeare Dallas. Her designs have won awards and been featured in Art & Seek's first "Artist Spotlight" on KERA. She is a member of Kitchen Dog Theater and author of the set design how-to *Alice Through the Proscenium*.

Korey Kent

COSTUME DESIGN

Korey is thrilled to be returning to Theater Three this Season. His last show with the company was *Heisenberg/Actually*. Most recently his work was seen in *Pompeii!* for Kitchen Dog Theater, where he is an Artistic Company Member. His work at KDT has included *Paper Flowers*, *Totalitarians*, *Thinner than Water*, *Gideon's Knot*, *Becky Shaw*, *Betrayal*, *26 Miles*, *Boom* (Costume Designer) and *The Chairs*, *Titus Andronicus* (Assistant Director). Korey is also an Artistic Associate with the The Drama Club. His designs for TDC include *Faust* and *Wild Wicked Wyrld*. Other Selected Work includes *Great God Pan*, *Cock*, *A Behanding at Spokane*; for Second Thought

Theater and the *Great American Side Show* for Cry Havoc Theater. Korey also serves as the Associate Producer and Casting Director for Shakespeare Dallas and is a proud member of Actors Equity Association. He has a BFA in Theatre Studies from SMU.

Leann Burns

LIGHTING DESIGN

Leann Burns received her BA from The University of North Texas and currently works as a Visual Arts Teacher at Irving High School. Her previous design credits include *A Little Night Music* at Theatre Three, *Hir* at Stage West, *The Last Five Years*, *Silent Sky*, *Pride and Prejudice*, *One Man, Two Guvnors*, *The Grapes of Wrath*, and *Spring Awakening* at Water Tower Theatre. In addition, Leann is an accomplished Jewelry Designer and artisan.

Tyler Payne

SOUND DESIGN

Tyler has been a live audio designer and engineer for over ten years. Based in the Dallas area, he supports many theaters, venues, churches, and special events with production services and consulting. Previous theatrical work includes *West Side Story*, *Thoroughly Modern Millie*, *Peter Pan*, *Phantom of the Opera*, *Miss Saigon*, *Nunsense*, *Heathers 101*, and *Les Misérables*. Tyler is a founder of Ultimate, AVT Inc., a growing North Dallas production company.

Danielle Georgiou, PhD. CHOREOGRAPHER

Danielle Georgiou is a Dallas-based choreographer and performance artist. In 2011, she began a performance project, the Danielle Georgiou Dance Group, which is an ensemble-based dance theatre group that produces original dance plays and musicals. Her choreographic work has recently been seen at Kitchen Dog Theater, Undermain Theatre, and Theater Three. Last season, she

CAST & CREW BIOGRAPHIES CONT.

choreographed *Adding Machine*, directed by Blake Hackler. She is excited to return to T3 to work on *Once*!

Krista Scott

DIALECT COACH

Voice & text direction: Shakespeare Theatre in Washington, D.C., Illinois Shakespeare, Trinity Shakespeare. Dialect coach: Shakespeare Dallas, Casa Mañana, Circle Theatre, Connecticut Repertory, Hangar Theatre, Kitchen Theatre. Directing: Shakespeare Dallas: *The King's Face*; Complete Works Series: *Macbeth*, *Coriolanus*; Circle Theatre: *Rasheeda Speaking*, *Funnyman*, *I and You*, *Venus in Fur*, *Exit Pursued by a Bear*; Stage West: *The Heir Apparent*; Amphibian Stage: *I'll Eat You Last*, *Mr. & Mrs. Fitch*. TCU Associate professor; associate teacher of Fitzmaurice Voicework.

Mark Howard

SOUND ENGINEER

Mark is a sound designer/engineer in the DFW area. Select sound credits include *Secret Garden*, *The Last Five Years*, the Regional Premieres of *Disaster!*, *Hit The Wall*, *Welcome to Arroyo's*, *Women on the Verge of a Nervous Breakdown*, and *Big Fish*. In addition to his work as a sound designer/engineer, Mark is also a freelance percussionist in the metroplex. howardsounddesign@gmail.com.

Renee Dessommes

AEA STAGE MANAGER

is excited to be back at Theatre Three. She got her M.S. from Texas A&M University-Commerce and her M.F.A. from University of Missouri, Kansas City. A few of her DFW credits include *Self Injurious Behavior* in Theatre Too, *Baloonacy* at Dallas Children's Theatre, *Peter Pan*, *Pinkalicious* and *Frosty the Snowman* at Casa Manana. She would like to thank her husband, John, and her beautiful daughter Ellanora for their love and support.

Cast Biographies

Ian Ferguson



(GUY) Ian Ferguson is thrilled to be returning to the T3 stage, having previously appeared in *On The Eve*, *Present Laughter*, and *The Farnsworth Invention*. Ian has worked on professional stages throughout DFW. Selected credits include *POMPEII!* (Kitchen Dog Theatre), *Hood* (Dallas Theater Center), *The Gospel According to Thomas Jefferson*, *Charles Dickens*, and *Count Leo Tolstoy: Discord* (Water Tower Theatre), *A Kid Like Jake* (Second Thought Theatre), *Mr. Burns: A Post Electric Play* (Stage West), and more. He's a musician playing in Dallas-based bands - Mur, Sister and Veteran Children. He also wrote the music and lyrics (book by Michael Federico) for the new musical, *The Manufactured Myth of Eveline Flynn*, which will appear on T3's main stage in Feb. 2019. Ian is a member of Actor's Equity Association and is represented by the Kim Dawson agency.



Cora Grace Winstead

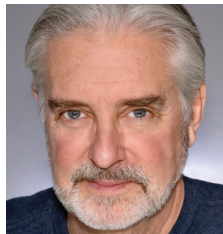
(GIRL) Cora Grace Winstead is overjoyed to be performing again at Theatre 3, her "theatre home". She was previously in last season's *The Last One*

Nighter on the Death Trail (Skeeter) and *The Minotaur* (Ariadne). Other favorite credits include Lyric Theatre of Oklahoma's *Fiddler on the Roof* (Tzeitel), Casa Mañana's *Jekyll & Hyde*, and Lyric Stage's *Guys and Dolls* and *The Hunchback of Notre Dame*. Cora is especially thrilled to be performing alongside her mother for the first time in ten years. Endless thanks to Jeffrey, Merri, Marianne, and Scott for creating this family, and to Jessie, Andrew, and her parents for constant loving and believing in her. coragracewinstead.com.



Matthew Cook

(BILLY) Matthew Cook is honored, humbled, and so very excited to share the stage with this extraordinary cast, these brilliant designers, and this marvelous crew. Generally you can find him at a pub playing with one of two bands of which he's a part, *Slugger's Rule* or *String Theory Irish Band*. He'd like to thank everyone for all the support and love, especially his boss Collin and his wife and true love, Erin. Sláinte and Safe Home.



Willy Welch

(DA) T3: *Assassins*, *Civil War Christmas*, *Woody Guthrie's American Song*, *Cotton Patch*



**Preferred
Technology Solutions**

Did you know that Theatre Three uses Preferred Technology Solutions as our trusted technology partner? They do great work and we ask that you consider meeting with them.

The fine folks at PTS will come to your offices and discuss how technology can help you reach your goals. And when they are there, you can discuss any issues and/or questions that you may have with them. Their expertise is supporting the technology needs of small and medium size businesses and they may be a perfect match for you. They are for us. We have found them to be very reliable, dependable and honest.

And if you mention Theatre Three when you contact them, they will provide you with a free Technology and Security review.

Please call 972-644-1992 or email sales@preferredtechnology.com
Managed IT –Cloud Computing–Cyber Security– VoIP–Surveillance
www.preferredtechnology.com



 **Frost** BANKING
INVESTMENTS
INSURANCE

MEMBER FDIC

*FROST CUSTOMER

CAST & CREW BIOGRAPHIES CONT.

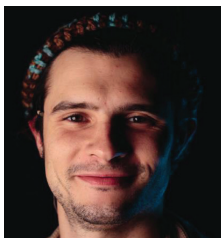
Gospel. Off-B'way: *Flipside* (The Patti Page Story) and *Texas in Paris*. Other venues include Dallas Theatre Center, Watertower Theatre, Casa Manana, New Harmony Theatre, American Stage Festival. Fave shows: *Ain't Nothin' But the Blues*, *FDR in Annie*, *Cotton Patch Gospel* (four times!), *Guys on Ice*. Staff composer for *Barney & Friends* (PBS) and itinerant singer/songwriter probably best known for the Peter Paul & Mary hit "Right Field."



Katrina Kratzer

(EX-GIRLFRIEND) Kat is honored to be returning to Theatre Three for the regional

premiere of *Once*. A graduate of Texas Tech University, she has performed with orchestras and bands all over DFW and is the fiddler for the Celtic rock band, Rathmore. Some of her theater credits include: *1776*, *The Music Man*, *Annie Get Your Gun* (Lyric Stage), *Bonnie and Clyde*, *Ring of Fire*, *Last Five Years* (WaterTower Theatre), *Civil War Christmas*, *Kountry Girls* (Theater Three).



Cory Kosel

(ŠVEC) Cory is thrilled to be returning to the Theatre Three stage where past credits include *A Civil War Christmas* and *Bloody Andrew Jackson*. Other regional/local credits: Alliance Theatre, Dallas Theater Center,

Hangar Theatre, The Ochre House Theater and Danielle Georgiou Dance Group. He has acted in several seasons with Stable Cable Lab Co in New York City. Thank you for keeping the arts alive and the music in your hearts.



Russell McCook

(ANDREJ) Russell McCook returns to Theatre Three after performing in last year's summer hit, *A Little Night Music*. Originally hailing from Tyler, TX, McCook now resides in Manhattan but is always thrilled to the Lone Star State. Other credits include *Les Miserables* (The Muny), *Big Fish* (Lyric OKC), *Little Women* (Southern Colorado Rep), and

CAST & CREW BIOGRAPHIES CONT.

Bat Boy (OKCU). A big thanks to Marianne, Scott, Micah, and the rest of this wonderful team for this amazing opportunity. IG: @russellvontussle



Jo-Jo Steine

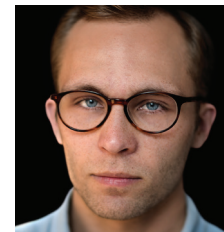
(RÉZA) Jo-Jo Steine is excited to be making her Theatre Three debut! Jo-Jo has a BFA in Theatre, a BA in Creative Writing, and a minor in musical theater from SMU. Recent credits include *Pure Confidence* (African American Repertory Theater), *POMPEII!!* (Kitchen Dog Theater), *Twelfth Night* and *Othello* (Camden Shakespeare Festival). In November, Jo-Jo begins her second tour of *A Christmas Carol* with Nebraska Theater Caravan. As always, she sends love to her wonderfully supportive parents.



Kelly Winstead Miyake

(BARUŠKA) Kelly Winstead Miyake marks her Theatre 3 debut after a decade-long hiatus from the stage. Prior roles include *Maria* (Sound of Music), *Betty Blake* (Will Rogers Follies), *Ernestina Money* (Hello, Dolly!), and *Melissa the Hippie* (Radio! The Musical). Kelly gratefully thanks Cora Grace Winstead and Andrew Keeler for encouraging her to audition, her family for supporting the endeavor, and Theatre 3 for the opportunity to

return to the stage. No words can adequately express the depth of gratitude owed to Elena Fainshtein, accordion teacher extraordinaire. "Thank you, Elena, for taking me on this summer and teaching me to play for this role and beyond. Your guidance, talent, and friendship are priceless."



Jake Nice

(EAMON) Jake Nice is a Dallas-based actor, director, and musician. He is honored to be part of *Once*, his first time acting at Theatre Three! Previous T3 gigs include sound designs for *Self Injurious Behavior* and *The Last One-Nighter on the Death Trail*. Jake recently produced and directed the regional premiere of *We're Gonna Die* by Young Jean Lee, which toured to venues such as The Wild Detectives, Amphibian Stage Productions, and the AT&T Performing Arts Center.



Alex Branton

(BANK MANAGER) Alex Branton is thrilled to be making his theatrical debut at Theatre Three. He is a Dallas native but received his BFA from Carnegie Mellon University. Since then he originated the role of Khorkey in the Off-Broadway production of *Son of a Gun: A New Musical*.

Other roles include: Demetrius in *A Midsummer Night's Dream*, Homer Collins in *Floyd Collins*, Vice Principal Panch in *25th... Spelling Bee*, and Camielle Raquin in *Therese Raquin* among others. He would like to thank Marianne and Micah for this truly exciting and unique opportunity. He would also like to extend his appreciation to his friends, family, and his much better half, Jayci, for their continued love and support. Enjoy the show!



Dotty Rico

(IVONKA) Dotty Rico is over the moon to be playing the role of Ivonka and join a talented cast of actors! An 8 year old attending Bradfield Elementary, Dotty loves theatre, art, dance, and music. When she isn't on stage or rehearsing for her next number you will find her at Girl Scouts, watching a Studio Ghibli anime film, or eating Indian food. She made her musical debut earlier this year playing the role of Molly in *Annie Jr*, *The Musical* with DAMPA. She has modeled for The Container Store and Neimans and was on The Dallas Galleria's billboard last year, and is currently represented by Wallflower Management. She has a passion for travel and has visited 10 different countries. Next on her bucket list: Japan! Dotty dreams of moving to New York City and performing on Broadway in *Hamilton*.

KITCHEN DOG THEATER PRESENTS

RADIANT VERMIN

BY PHILIP RIDLEY

DIRECTOR: KDT ARTISTIC COMPANY
MEMBER TIM JOHNSON

OCT 4 - OCT 28
THURS - SAT AT 8:00 PM AND SUNDAY AT 2:00 PM

TRINITY RIVER ARTS CENTER
2600 N. STEMMONS FWY,
SUITE 180, DALLAS, TX 75207

TICKETS 214.953.1055
KITCHENDOGTHEATER.ORG

MENTION THIS AD
AND GET \$5 OFF!

REGIONAL PREMIERE



A DOLL'S HOUSE

October 12 – November 4, 2018
By Henrik Ibsen | Adapted & Directed by Joanie Schultz

WaterTower Theatre
at the Addison Theatre Centre

15650 ADDISON RD
ADDISON, TEXAS 75001

BOX OFFICE: (972) 450-6232
WATERTOWERTHEATRE.ORG

COME GASP TOGETHER!



Introducing a new arts media organization for North Texas

News, reviews, interviews, calendar listings and feature stories on the performing and visual arts. Join us for a new era of arts journalism

Metropolitan Arts Media, Inc. operates as a non-profit organization under code 501(c)(3)

THE JAC ALDER LEGACY FUND *Legacy Donors*

\$75,000

The John & Bonnie
Strauss Foundation

\$50,000

Janet Spencer Shaw

\$25,000

Dianne & Marion Brockette
David G. Luther, Jr.

\$10,000

Stan Graner & Jim McBride
Sally Hansen
Ms. Elizabeth Rivera
The Eugene McDermott Foundation

\$1,000 – \$9,999

Ida Jane & Doug Bailey
James Lee Blackwell
Mr. Bill Bond
Mason Brown Family Foundation
Ms. Suzanne Burkhead
Meriam Calabria
George & Jo Ann Caruth
Kay Champagne
Andrea "Sid" Curtis
Dede Duson
Cathy & Bob Estrada
Laura V. Estrada
Richard Ferguson
Elaina & Gary Gross
Craig A. Haynes
Mrs. Jo Kurth Jagoda
Ms. Emily Jefferson
Veletta Forsythe Lill & John C. Lill
Lydia MacKay
Wilson & Gwyn Mason
Tom & Phyllis McCasland
Ms. Elya Naxon
Paul & Joan Ridley
Dana Whitehead Rigg
Eileen & Harvey Rosenblum
Ken & Susan Swan Smith
Daniel Tamez
Patricia A. Vaughan &
Barbara S. Turner

Charlie & Laura Weems
Scott & Susan Williams

\$500 – \$999

Anonymous
Ann Abbe
Robert & Diane Alder
Alan & Ann Bogdanow
Carol L. Croy
Gabe & Carol Dallal
Bobby & Anne Fincher
Richard & Rozelle Gilman
Fred J. Gross Memorial Charitable
Fund of the Dallas Jewish
Community Foundation
Gregory Hahn
Mary Anne Hardison
Barbara K. Materka
Sam & Barbara McKenney
Joseph & Lucille Montag
Gift in honor of Janet Shaw
Frank Sulzbach
Weathers Family Charitable
Fund of Communities
Foundation of Texas
Nina Works

\$250 – \$499

Ralph & Jo Blackburn
Bill & Fran Carter
Michael & Christine Cluff
Ms. Connie Coit
Mary Collins Agency
Mr. & Mrs. Michael E. Crossley
Michael L. Dailey
Linda M. Lee & Jay Isham
William & Cynthia Meier
Chris Rajczi
Judy & Jack Schecter
Gary & Genie Short
Walt & Gigi Steele
Van Pelt & Associates
Chris Westfall &
Lisa-Gabrielle Greene

\$10 – \$249

Diana Behaneseey
Chad Barton

Ms. Frances Blatt
Merri Brewer & Jeffery Crain
Katherine Church
Diana Clark
Mr. Raymond J. Clark
Karen Davis
Chuck Donaldson
Jim Dykes
Mrs. Francis Estes
Robyn Flatt
Richard L. & Kay Fleming
Gregory Gerardi
Lane Gorman
Bob & Marilyn Halpin
Diane Haselroth
Cherry Haymes
Ms. Jean B. Hecht
Tena Hehn
Barry Herbert
Judy Hollis
Ms. Jane Hook
KEMB
Jeff & Cora Hurst
Steve Krant
Eric Laub
Jack & Jo Ann Leavitt
Grace McDonald
Ms. Michelle Mew
Ms. Lisa C. Miller
Erika & Joel Nannis
Judy & George Nassif
Ellen Osburn
John & Julie Parolisi
Ms. Susan Read
Durel & Barbara Reid
Lynne Richardson
Ms. Ruth May Rydell
Mr. & Mrs. Gregory Shinn
Mr. Michael Skotnik
Jean & Neal Smith
Ete Szuts
Lane Gorman Turbitt, PLLC
Barbara Turner
Mrs. Helen C. Walker
Alan & Gloria Weinblatt
Rod Wilson
R.G. Zachariadis

**To give to the Jac Alder Legacy Fund, please
contact Theatre Three at 214-871-3300**

Updated 8/30/2018

■ T3 PATRONS • THE ANNUAL FUND

Theatre Three is committed to recognizing the donors who ensure our ability to make world class theatre here in Dallas. Join this list of wonderful patrons and make a gift to Theatre Three's Annual Fund today! While we work diligently to ensure that everyone is acknowledged properly for their contributions, sometimes mistakes are made. If you have a correction to request – PLEASE, call our Development Associate, Charlie Beavers at (214) 871-3300 x101 to ensure that you are recognized accurately in the future. *This list represents gifts received between September 1st, 2017 and August 30th, 2018.*

THEATRE ANGELS

\$10,000 & above

Ms. Janet
Spencer Shaw
The Shubert
Foundation
The John & Bonnie
Strauss Foundation
The Estate of Ms.
Brenda Stubel

memory of Lucille
Montag
Nesha & George
Morey
June S. Morgan
Harry S. Moss
Foundation
Margot B. Perot
Blair Pogue
Mr. & Mrs. Warren
L. Rubin

Chuck & Lolisa
 Laenger
 Barbara F. Markerta
 William & Cynthia
 Meier
 Joseph Montag
 Janet Nimmo,
 In Memory of Dan
 Nimmo
 Chris Rajczi
 Rick Russell

Rita M. Kliebert
Carol & George
Kondos
Steve Krant
Ms. Kelly K. Lane
Ms. Judy Lawhorn
Harry Malpass
Michael & Janine
Mason
Tom & Phyllis
McCasland
Michelle Prejean
Durel & Barbara Reid
Rodolfo E. Salas
Jeffrey Schmidt
Deborah & Craig
Sutton
Dr. Joan M. Tamez
Liza P. Urso
SoloShoe

Dana Edwards
Harryette Ehrhardt
Lee & Paula Eilbott
Ms. Jane Gaines
Paul & Claire McLin
David & Wilma Milne
Nancy & Joe Moore
Erika & Joel Nannis
Mr. & Mrs. Jim
Nugent
Mr. Patrick Parise
Larry & Carol Peters
Lynne Richardson
Patricia L.
Shaughnessy
Gregory & Victoria
Shinn
Robert & Lynne
Thompson
James F. & Barbara
Wallis
Mr. Richard Wills
Paul & Alison Wright
Mr. Zoltan Zsohar
Bravo Entertainment

Mr. John S. Davies
Travis & Veronica Day
Bonnie De Passe
Amon & Pauline
Denur
Janet Domaracki
Ruth McAlester Duff
Mr. Joshua Dwelle
Tim and Tricia Elliott
Mr. R. Bruce Elliott
Dorothy E. Fischer
Mary & Bob Fleming
Robert Forner
Mr. & Mrs. Mark Fritz
Mrs. Amy Galley
Catalina Garcia
Margaret Gillett
Doug & Linda Gilpin
Mr. James Glenn
Shirley Ann Grannan
Phillip & Gloria Gray
Jack & Lana Greeley
Bob & Janet Haderler
Mark Haley
Mark & Lynda
Hamilton

Jack & Jo Ann Leavitt
Linda M. Lee &
Jay Isham
Katy Lemieux
Mr. Alan H Levi
Mrs. Susan Lichten
Harriet Little
Carol Ann &
Dan Luby
Gregory & Maryam
Lush
Judy Mathis
Ms. Frances McGlinn
Stacy Meadows
Preferred
Technology
Solutions
Kyle Messerschmitt
Leon Miller
Mike & Gayla Miller
Ms. Trisha Miller
S.D. Moore
Dean and Danette
Morgan
Stephen Flach &
Sharron Morgan
Madeline Morris
Diana Muckleroy
Robert A. Olson
Ms. Cathy O'Neal
Mark Oristano
Ms. Carlene
Peal-Scone
Dr. Frank Perez
Mary Petterborg
David Pryor
Charles & Sasan
Ramirez
Dr. & Mrs. Peter C.
Ray
Bonnie Rea
Diane Reed
Ms. Margie Reese
David W. Ricker
Dana Whitehead
Rigg
Ms. Elizabeth Rivera
Paul & Stephanie
Rula

Lisa Ryan
 Ms. Ruth May Rydell
 Melanie Lynn
 Sanders
 Maxwell Scarlett
 Deborah Siddens
 Margaret Sloman
 Kent Smith
 Nancy Spence
 Conni & Bill
 St. Angelo
 John & Michele
 Stephens
 Susan & John Stetter
 Pat Tarpley
 Robert Todd
 John & Marilyn Tolle
 Mr. & Mrs. David
 Townsend
 Cynthia Trochu
 Mr. & Mrs. Tom
 Tunks
 Mr. John Viola
 Isaac Leaverton &
 Matthew Waite
 Mrs. Amanda West
 Mr. Dale A. Wheeler
 Clark & Jane
 Willingham
 Ed & Ylva Wolfgang
 Ken & Anita Wrobel
 Bill Zeeble & Nicole
 Leblanc
 Anne Zhang
 Dallas Jewish
 Community
 Foundation
 Beyond
 Communities
 Foundation
 Maguire Oil
 Company

PRODUCER'S CIRCLE

\$1000 – \$9,999

Ida Jane & Doug
Bailey
Susan E. Barkley
Mr. James Lee
Blackwell
Mr. Bill Bond
Dianne & Marion
Brockette
Mason Brown Family
Foundation

Karn & Jennifer
Schmidt
Jerry Setliff & Joyia
Elinson
Don & Norma Stone
Texas Instruments
Foundation
Victoria & Jack
Tutterrow
Mr. & Mrs. Charles
Weems

John McCafferty &
Lorraine Sear
Ken & Susan Swan
Smith
Kathy S. Ward
Weathers Family
Charitable Fund
of CFT

Communications,
LLC
ExxonMobil
Foundation

FRIENDS

\$50–\$124

Anonymous
Craig & Mary
Anderson
Mr. Curtis Bagley
Ms. Bettye C. Barnes
Mike & Susan
Bartlett
Ms. Sheri Beemer
Carl & Jeanette
Benson
Ms. Taunee S.
Besson
Henry & Annie Bivins
Dr. Jo Ellen Bogert
Mr. Robert Boyer
Merri Brewer
Charles & Diana
Briner
Jeanna Camp
H.E. & Carol Canada
Mrs. Rita Clinton

Gerald & Francis
Hare
Rita Harvey
Cherry Haymes
Ms. Jean B. Hecht
Christine Hebber
Morley & Cheryl
Herbert
Dr. Pamela R. Hill
Bob Hess &
Doug Miller
Mary A. Ingram
Mr. Mark Jacobs
Sue & Phil John
Melinda Johnson
Mr. Parris Jones
Ms. Carolyn Kacer
Mr. Douglas Kenn
Caryl Keys
Elaine Klobe
Juris & Carolyn
Laivins
Pam Lange

Madeline Morris
Diana Muckleroy
Robert A. Olson
Ms. Cathy O'Neal
Mark Oristano
Ms. Carlene
Peal-Scone
Dr. Frank Perez
Mary Petterborg
David Pryor
Charles & Sasan
Ramirez
Dr. & Mrs. Peter C.
Ray
Bonnie Rea
Diane Reed
Ms. Margie Reese
David W. Ricker
Dana Whitehead
Rigg
Ms. Elizabeth River
Paul & Stephanie
Rula

IN KIND DONORS
SoloShoe
Communications,
LLC
Sid Curtis

Ms. Suzanne

Burkhead
Kay Champagne
Karen Davis
Virginia C. Dykes
Fred S. & Jerri
Grunewald
Sally Hansen
Mr. & Mrs. Craig
Haynes
Susan Hebley
Charles & Trudy Hess
Michael A. & Wendy
Jenkins
Kl Gates
Samuel & Barbara
McKenney
Joseph Montag, in

LEADING PLAYERS

\$500–\$999

Mark Blaquiere
Raymond Clark
Michael & Christine
Cluff
Sid Curtis
Michael L. Dailey
Shirley Danner
Karen Davis
Claudia Davis
Laura V. Estrada
Larry & Diane
Finstrom
David M. Forsythe
W. John Glancy
Elaina and Gary Gro
Greg & Heda Hahn

SUPPORTING PLAYERS \$250–\$499

Ann Abbe
Mr. Todd Bahner
Dr. Barbara S Baxter
Rosanne Bell
John Bell, Jr.
Ms. Frances Blatt
Craig Boleman &
Kass Prince
Judith Calvert
Morris S. Crim
Carol L. Croy
Gabe & Carol Dallal
Dede Duson
Ray Fowler
Mr. & Mrs. Jack W.
Hawkins
Paul & Chris
Hendricks
Bob & Barb Herbison

BACKSTAGE BENEFACTORS

\$125–\$249

Anonymous
Charles & Susan
Arnett
Ms. Frances Blatt
James & Diana Bigner
Mr. & Mrs. Gregory K.
Boydston
Susan Carnell
D. Scott Cooper and
Conrad Hamric
Carol Jablonski &
Michael Dill
Harry J. Durstine

Mike & Susan
Bartlett
Ms. Sheri Beemer
Carl & Jeanette
Benson
Ms. Taunee S.
Besson
Henry & Annie Bivins
Dr. Jo Ellen Bogert
Mr. Robert Boyer
Merri Brewer
Charles & Diana
Briner
Jeanna Camp
H.E. & Carol Canada
Mrs. Rita Clinton



CELEBRATING 50 YEARS
of TRANSFORMING
LIVES THROUGH THE ARTS

TACA CELEBRATES THE TRANSFORMATIVE

IMPACT OF THE ARTS

FOR ALL CITIZENS OF DALLAS

2017 TACA GRANT AWARD RECIPIENTS

African American Repertory Theater • Arts District Chorale
AT&T Performing Arts Center • Avant Chamber Ballet • Big
Thought • Blue Candlelight Music Series • Bruce Wood Dance
Project • Cara Mia Theatre Company • Chamber Music
International • Chamberlain Ballet • Children's Chorus of
Greater Dallas • Cry Havoc Theater Company • Dallas Bach
Society • Dallas Black Dance Theatre • Dallas Chamber Music
Society • Dallas Chamber Symphony • Dallas Children's
Theater • Dallas Symphony Orchestra • Dallas Theater Center
Dallas Winds • Dark Circles Contemporary Dance • Echo
Theatre • Fine Arts Chamber Players • Greater Dallas Youth
Orchestra • Junior Players • Kitchen Dog Theater • Lone Star
Wind Orchestra • Lyric Stage • Nasher Sculpture Center
Orchestra of New Spain • Orpheus Chamber Singers • Plano
Civic Chorus • Plano Symphony Orchestra • Sammons
Center for the Arts • Second Thought Theatre • Shakespeare
Dallas • Soul Rep Theatre Company • Teatro Dallas • Texas
Ballet Theater • Texas Winds Musical Outreach • The Black
Academy of Arts and Letters • The Dallas Opera • Theatre
Three • TITAS • Turtle Creek Chorale • Undermain Theatre
Uptown Players • Voices of Change • WaterTower Theatre

TACA believes in the transformative power of the arts and their ability to ignite conversations that demonstrate respect, offer exploration, examine personal challenges, celebrate diversity, and tender hope, joy, understanding and laughter.

214.520.3930 taca-arts.org

Photo courtesy of TITAS

