

The MOORS

by
JEN SILVERMAN

directed by
GARRET STORMS

25
OCT
THRU
NOV
18
2018



#t3themoors



GARTH WILLIAMS: ILLUSTRATOR OF THE CENTURY

SEPT 8 – JAN 27
DUPREE LOBBY

FREE EXHIBIT @IAC



Mr. Dog



The Sailor Dog

Free guided gallery tours are offered every Thursday @ 6:30 p.m. and every Sunday @ 2:30 p.m. Call 972.252.7558 for more information.

Gallery Hours:
9 a.m. – 5 p.m. Monday, Tuesday, Wednesday and Friday;
9 a.m. – 8 p.m. Thursday; 10 a.m. – 5 p.m. Saturday
1 – 5 p.m. Sunday.

© Irving Arts Center 2018

Organized and toured by the National Center for Children's Illustrated Literature in Abilene, TX, this exhibition presents original work from 28 of Garth William's most beloved books, including *Charlotte's Web*, *The Little House on the Prairie* and a number Little Golden Books.

Leonard Marcus, curator of the exhibition and one of the world's leading writers about children's books and the people who create them, will speak about Garth Williams on Sept. 22 at 2 p.m. Talk followed by a reception and book signing.

IRVING
ARTS
CENTER

It's worth the trip!
Open 7 days a week • Free parking
3333 N. MacArthur Blvd.
Irving, TX 75062
IrvingArtsCenter.com

DADA
Dallas Art District Association

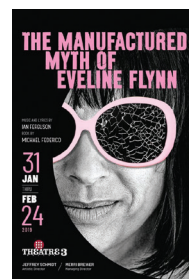


Smithsonian Affiliate

THEATRE 3
DALLAS

JEFFREY SCHMIDT / ARTISTIC DIRECTOR
MERRI BREWER / MANAGING DIRECTOR

2018-19 SEASON



SEASON TICKETS ON SALE NOW!

214.871.3300 x1
THEATRE3DALLAS.COM

THE MOORS IS MADE POSSIBLE BY...

Theatre Three is supported by its Board of Directors, by subscribers, by funds from the City of Dallas Office of Cultural Affairs, The Texas Commission on the Arts, TACA, Dallas Tourism Public Improvement District, and The Shubert Foundation. This project is supported in part by an award from the National Endowment for the Arts. A major contribution from the estate of Marlene Webb, a longtime subscriber, has established the Theatre Three Endowment Fund in support of the building and its equipment.

TACA
TRANSFORMING LIVES
THROUGH THE ARTS



Office of Cultural Affairs
CITY OF DALLAS

THE SHUBERT
FOUNDATION INC.

Hobblitzelle
FOUNDATION

Texas
Commission
on the Arts

DALLAS
Tourism Public Improvement District

ART WORKS.

National
Endowment
for the Arts
arts.gov

T3 PEOPLE

BOARD OF DIRECTORS

CHAIR Marion L. Brockette, Jr.

BOARD MEMBERS

Chad Barton, Suzanne Burkhead, Mike Cluff, Sid Curtis, Karen Davis, Laura V. Estrada, Sally Hansen, Harrison Herndon, Michael Jenkins, David G. Luther, Jr., Stacy E. Marshall, Chris Rajczi, Scott T. Williams, Rod Wilson

OCA LIAISON Linda Blase

ADVISORY BOARD John Strauss

HONORARY BOARD MEMBERS

Virginia Dykes, Gary W. Grubbs, John & Bonnie Strauss

ADMINISTRATION

ARTISTIC DIRECTOR Jeffrey Schmidt

MANAGING DIRECTOR Merri Brewer

DIRECTOR OF STRATEGIC MARKETING AND DATA ANALYSIS Kat Edwards

COMPANY MANAGER Sarah Barnes

DEVELOPMENT ASSOCIATE Charlie Beavers

PUBLICITY, MARKETING, CREATIVE

& PLAYBILL DESIGN

SoloShoe Communications, LLC

CPA Ron King

BOOKKEEPER JaVonnia Nixon

HOUSEKEEPING Night Line Janitorial Services

2018-2019 CASTING DIRECTOR Richard Quadri

PRODUCTION

PRODUCTION MANAGER Lauren Volz

TECHNICAL DIRECTOR Jon Leitch

SCENIC ARTIST Emily Hauelsen

APPRENTICE STAFF Emily Ann Probus, Kaylor

Winter-Roach

CUSTOMER SERVICE

PATRON SERVICES MANAGER Angelica Rollins

ASST. BOX OFFICE MANAGER/ASST. HOUSE MANAGER Samantha Grace

BOX OFFICE AGENTS

Bennett Chapple, Wesley Farnsworth, Isa Flores,

Jazzay Jabbar, Brenda Rebolgar



Theatre Three has Hearing Assistance devices which may be checked out without charge from the box office. These devices enhance the performance experience for audience members with any degree of hearing limitation. The box office personnel can provide you with the devices either before the show or at intermission. Theatre Three's staff and board are most grateful to donors Carolyn Wickwire and Dennis West, who provided the grant that allows us to offer this enhancement to our patrons.

ON OTHER STAGES

DALLAS CHILDREN'S THEATER

OCT 19 - 28 *A Wrinkle In Time*

WATERTOWER THEATRE

OCT 12 - NOV 4 *A Doll's House*

CIRCLE THEATRE

OCT 18 - NOV 17 *Men on Boats*

STAGE WEST

OCT 25 - NOV 25 *A Doll's House, Part 2*

UNDERMAIN THEATRE

NOV 8 - DEC 2 *The Lady From The Sea*

ARTIST ADVISORY BOARD

Maryam Obaidullah Baig, Dante Flores, Gretchen Elizabeth Smith, Montgomery Sutton, vickie washington

This playbill is a publication of Theatre Three, Inc. in support of *The Moors* (the third show in the 2018-19 season) on the Norma Young Arena Stage.

THEATRE THREE IS A PROUD
ASSOCIATE MEMBER OF



Off-Broadway premiere of *The Moors* was produced by The Playwrights Realm (Katherine Kovner, Artistic Director; Roberta Pereira, Producing Director) In January 2017 World Premiere produced by Yale Repertory Theatre, New Haven, Connecticut James Bundy, Artistic Director Victoria Nolan, Managing Director

"*Moors, The*" is presented by special arrangement with SAMUEL FRENCH, INC.



THEATRE THREE'S 2018 - 2019 SEASON



The Moors

Written by Jen Silverman

Directed by Garret Storms

THE
NORMA
YOUNG
ARENA
STAGE

ARTISTIC STAFF

DIRECTOR

Garret Storms

ASSISTANT DIRECTOR

Jenna Richanne Hannum

SCENIC DESIGN

Ian Loveall

COSTUME DESIGN

Aaron Patrick DeClerk

LIGHTING DESIGN

Luke Atkison

SOUND DESIGN

John M. Flores

FIGHT CHOREOGRAPHER

Mitchell Stephens

MUSIC SUPERVISOR

Jake Nice

CAST

AGATHA

Emily Scott Banks*

HULDEY

Mikaela Krantz**

EMILIE

Vanessa DeSilvio*

MARJORY

Jenny Ledel**

MASTIFF

Thomas Ward*

MOOR-HEN

Felicia Bertch

PRODUCTION STAFF

STAGE MANAGER

Michelle Foster*

PRODUCTION ASSISTANTS

Emily Ann Probus

Kaylor Winter-Roach

SPECIAL THANKS

Bart McGeehon

Kat Kratzner

Matthew Russell Cook

Monika Zimmerman

Alan Shorter

Stage West Theatre

The Stage Door

Theatre TCU

* indicates members working under Actors' Equity Association contracts in this production.

** indicates a performer enrolled in the AEA membership candidate program.

Please silence your cell phones and all electronic devices. The videotaping or making of electronic or other audio and/or visual recordings of this production or distributing recordings on any medium, including the internet, is strictly prohibited. A violation of the author's rights and actionable under united states copyright law.

For more information, please visit: www.samuel french.com/whitepaper



■ DIRECTOR'S NOTES

"I remembered that the real world was wide, and that a varied field of hopes and fears, of sensations and excitements, awaited those who had the courage to go forth into its expanse, to seek real knowledge of life amidst its perils."
-Charlotte Brontë, Jane Eyre

Time is an odd little thing. It works differently in one's mind and soul than it does in the world.

For the world, time is always only ever now - structured, one moment and then the next, counting down to the end. But inside one, it is endless - moving through memory and leaping from present to future to past and back again with an immortal and careless sense of itself.

Time is both a friend and an enemy, making itself available and in the same moment stealing itself away. One has a reluctant and delectable love affair with time. It is both limited and eternal. This makes one's bond with it both tragically beautiful and deliciously dangerous. One needs time in order to gauge the meaning and purpose of life, but the need is not mutual. And when the inevitable end comes, time will still move on without one into a new now - the cheeky little bastard. But without time, life has no meaning - therefore, in a way, time has a direct correlation with possibility - with hope. And one must find hope in order to exist.

■ BIOGRAPHIES

About the Playwright

Jen Silverman

Jen Silverman is a New York-based writer. Born in the U.S., she was raised across the U.S., Europe and Asia. Her theatre work includes *The Moors* (Yale Repertory Theatre premiere, off-Broadway with The Playwrights Realm, Susan Smith Blackburn finalist); *The Roommate* (Actor's Theatre of Louisville Humana world premiere, multiple regional productions including South Coast Rep, SF Playhouse and Williamstown Theatre Festival,

upcoming at Steppenwolf); *Phoebe in Winter* (Off-off Broadway with Clubbed Thumb); *Collective Rage: A Play in 5 Betties* (Woolly Mammoth premiere); and *All the Roads Home*, a play with songs (Cincinnati Playhouse in the Park premiere). Jen is a member of New Dramatists, a Core Writer at the Playwrights Center in Minneapolis, an affiliated artist with *Space* on Ryder Farm, and has developed work with the O'Neill, New York Theatre Workshop, Playpenn, Portland Center Stage, The

And in that search, one may find oneself in the place where time lives - where it hides hope away. It is a place that circles back on itself - a powerful vastness with no telling if it is then or now or when. It is strange and bleak, yet somehow familiar and warm.

A gray sky that goes on forever, a mist that makes the horizon hazy, a turf beneath one's feet that demands action and movement without offering any itself, a sneaky and cold little wind that raises the hairs on the back of one's neck.

A place that is secret, a place that is curious, a place of possibility, a place of hope. One could reinvent oneself in such a place. And when one finds oneself there searching for hope (and one will always eventually find oneself there searching for hope) one must be very careful, for time is alive and time is hungry - one wrong turn and time will swallow one whole.

When one finds oneself there, one has but a single objective - survive.

Welcome to The Moors.

We've been waiting for you.

-Garret Storms

■ CAST & CREW BIOGRAPHIES

Iowa Playwrights Workshop, Juilliard. More info: www.jensilverman.com

Artistic Staff Biographies

Garret Storms DIRECTOR

Garret is thrilled to be making his Theatre Three directorial debut with *The Moors*. He has directed *Hir*, *Like a Billion Likes*, *The Nether*, *Deer*, *Jacob Marley's Christmas Carol*, *Mr. Burns*, a post-electric play, *International Falls*, and *Orlando* for Stage West and *Bright Half Life* for WaterTower Theatre. Acting credits include productions at Stage West, WaterTower Theatre, Stages Repertory Theatre, Uptown Players, Trinity Shakespeare Festival, Theatre Three, Amphibian Stage Productions, Shakespeare Dallas, and RADA among others. Garret has a BFA in Musical Theatre from Sam Houston State University.

Jenna Richanne Hannum

ASSISSTANT DIRECTOR

Jenna Richanne Hannum is delighted to be a part of her first Theatre Three production. Jenna studied theatre at SMU as a President's Scholar and graduated in 2015 with a degree in Theatre Studies. She is currently working as a Production Assistant at Spoke Media while pursuing her passion for directing with several theatres in the DFW area. Recent credits include Director of *The Book of Gabe* for the Bath House's FIT Festival, and Assistant Director of *Hir* at Stage West

and *Shakey Jake & Alice* at the Undermain.

Ian Loveall

SCENIC DESIGN

This is Ian's first collaboration with Theatre 3. A native of San Diego, he began his career as a mural artist in Southern California. Since then he has designed for opera, musicals, television, events, ballet and theatre. He holds a BA in Studio Art from Fresno State University and an MFA in Scenic Design from The University of Texas at Austin. In addition to his design work, he recently joined the faculty at Theatre TCU. His work can be found at ianloveall.com

Aaron Patrick DeClerk COSTUME DESIGN

Aaron has designed over 140 productions and garnered critical praise and numerous awards for his work. He was named Best Costume Designer in the Dallas Observers' 100 Most Influential People of Dallas in 2010 and named an Artistic Associate for Trinity Shakespeare Festival in 2014. Highlights include: *King Lear* (Trinity Shakespeare Festival), *A Christmas Carol* (Northern Stage), *Critical Case of Murder* [Column Award 2007] (Pegasus Theatre), *House at Pooh Corner* (Alabama Shakespeare Festival), *Crucifer of Blood* [DFW Theatre Critic's Forum Award] (Theater Three), *Right Ho, Jeeves* [Column Award 2011] (Contemporary Theater of Dallas), *The Boxer*

[Column Nomination 2007, Official Entry International NYC Fringe Festival 2009] (Bootstraps Comedy Theatre), *The Never Ending Story* [DFW Theatre Critic's Forum Award], *Sleeping Beauty* [Leon Rabin Award] (Dallas Children's Theatre), *Every Trick in the Book* [DFW Theatre Critic's Forum Award] (Classical Acting Company).

Luke Atkison

LIGHTING DESIGN

Luke Atkison is a Lighting Designer currently based in Orlando, Florida; however, he received his Bachelors degree in Theatre with an emphasis in Design from Texas Christian University here in the DFW metroplex. Other credits in the area include lighting designs for Stage West (*Like A Billion Likes*, *Stupid F*cking Bird*, and *Life Sucks*), WaterTower Theatre (*Bright Half Life*), and Tarrant County College (*Lost in Yonkers*, *Grease*, and *The Laramie Project*). Outside of DFW, Luke has worked as a lighting/projection designer for the fashion, music, theatre, and dance industries on projects all over the country.

John M. Flores

SOUND DESIGN

Theatre Three (*She Kills Monsters*, *Dr. Jekyll & Mr. Hyde*, *Adding Machine – The Musical*, *Seminar*, *Bengal Tiger At The Baghdad Zoo*), DTC (*Fade*, *Gloria*, *Raisin In The Sun*, *Clybourne Park*). Kitchen Dog Theater - (*Radiant Vermin*, *The Royale*, *Ironbound*, *Br'er Cotton*, *Paper Flowers*, *Feathers and Teeth*). Second Thought Theatre (*Revolt She Said Revolt Again*, *Straight White Men*, *The*

CAST & CREW BIOGRAPHIES CONT.

Great God Pan). Stage West (*An Octoroon*, *Don't Dress for Dinner*, *Hir*, *Sex With Strangers*, *The Aliens*), Echo Theater (*Ruined*, *Night Mother*) Trinity Repertory Company (*Native Gardens*) The Drama Club (*Wild*, *Wicked*, *Q WYRD*) John electrifies with Jim Kuenzer as Jim/John Make Noise.

Mitchell Stephens

FIGHT CHOREOGRAPHER
Mitchell Stephens is an Actor and Fight Director based in DFW. His work can be seen across the Metroplex; recent works include WaterTower Theatre, Amphibian Stage Productions, Prism Movement Company and the Trinity Shakespeare Festival. He is happy to be a part of this wonderful production with a wonderful team.

Michelle Foster

AEA STAGE MANAGER
Michelle Foster is pumped to be stage managing her first production at Theatre 3. She has worked the last three seasons at Undermain Theatre, on productions including *Long Day's Journey Into Night*, *Jonah*, *10 out of 12*, *Galileo*, *Annie Baker's John*, and *Three Sisters*. She has also worked with Shakespeare Dallas on *Complete Works of Williams Shakespeare Abridged* and *Richard 3*; Trinity Shakespeare's *Romeo and Juliet* and *Twelfth Night*, as well as with Stage West on *Sex with Strangers* and *Don't Dress for Dinner*. Michelle has been the production manager for the annual Living Black and White™ productions with Pegasus Theatre since 2014,

and teaches props at Booker T Washington High School.

Cast Biographies



Emily Scott Banks

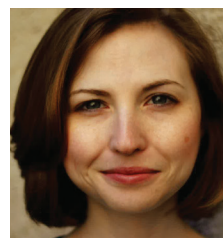
(AGATHA) An actor/director, Emily Scott Banks most recently played "The Angel" in *Angels in America*, *Perestroika* (Uptown Players) and "Lyubov Ranesvsky" in *The Cherry Orchard* (The Classics Theatre Project), and directed *Stage Kiss* (Circle Theatre). Upcoming projects include reprising the solo-actor *Jacob Marley's Christmas Carol* (Stage West) and directing *Brilliant Traces* at the Stone Cottage in Addison. Area directing credits include *Stupid F*cking Bird*, *Life Sucks.*, *An Iliad*, and *The (curious case of the) Watson Intelligence* for Stage West; *The Big Meal*, *The Gospel According to Thomas Jefferson*, *Charles Dickens*, and *Count Leo Tolstoy: Discord*, and *The Adventures of Tom Sawyer* for WaterTower Theatre; and *Fix Me*, *Jesus* here at Theatre Three where she will direct *Foxfire* this season. Emily has won awards for her work in both disciplines, including multiple DFW Critics' Forum Awards, and Best Actress of the Year nods from Dallas Observer, D Magazine,

TheaterJones. Emily is a proud member of Actors Equity.



Mikaela Krantz

(HULDEY) Mikaela is in freaking love with this play, and is stoked that it gets to be her theatre3 debut. She's done *Troilus & Cressida*, *Julius Caesar*, etc (HV Shakespeare Festival - NY), *Tiny Disasters* (The Guthrie - MN), & *King Henry 6 Pt2* (The Globe - London, UK). Other local favorite shows you've seen her in: *The Flick* (Undermain), *Mr. Burns* (Stage West), *Hank Williams* (Watertower), *Booth* (Second Thought), *The Pleasure Trials* (Amphibian). She's also been in a few documentaries and TV shows and is a staple voice actor at Funimation for Anime dubs. She basically does stuff and things and it's cool. What's important is that you are here now. Have fun.



Vanessa DeSilvio

(EMILIE) Vanessa DeSilvio is thrilled to be back on Theatre Three's stage as she



Preferred
Technology Solutions

Did you know that Theatre Three uses Preferred Technology Solutions as our trusted technology partner? They do great work and we ask that you consider meeting with them.

The fine folks at PTS will come to your offices and discuss how technology can help you reach your goals. And when they are there, you can discuss any issues and/or questions that you may have with them. Their expertise is supporting the technology needs of small and medium size businesses and they may be a perfect match for you. They are for us. We have found them to be very reliable, dependable and honest.

And if you mention Theatre Three when you contact them, they will provide you with a free Technology and Security review.

Please call 972-644-1992 or email sales@preferredtechnology.com
Managed IT - Cloud Computing - Cyber Security - VoIP - Surveillance
www.preferredtechnology.com



 **Frost** BANKING
INVESTMENTS
INSURANCE

MEMBER FDIC

*FROST CUSTOMER

CAST & CREW BIOGRAPHIES CONT.

was last seen in *Susan and God* in 2017. Other DFW theater credits include: Dallas Theater Center: *Sense and Sensibility*, *A Christmas Carol*, *Death of a Salesman*; Dallas Children's Theater: *Mariachi Girl*; Amphibian Productions: *Smart Pretty Funny*; Undermain Theatre: *Tomorrow Come Today*; Kitchen Dog Theater: *Se Llama Cristina*; Cara Mia Theater Company: *Milagritos*; Shakespeare Dallas: *The Winter's Tale*, *Coriolanus*, *Cyrano de Bergerac*. Television: *The Leftovers*, *Queen of the South*, *American Crime*, *From Dusk Till Dawn* TV Series. Voice Over credits include English and Spanish numerous audiobooks, radio spots in English and Spanish, IStation, and FUNimation. Education: MFA in Acting from SMU. Represented by The Mary Collins Agency. Vanessa would like to thank her husband, Doug, and her two boys, Anthony and Domenic, for supporting her love of performance.



Jenny Ledel

(MARJORY) Jenny is an actor living in Dallas, TX where she is an Artistic Associate at Second Thought Theatre and a company member at Kitchen Dog Theater. Her film credits include *Karma Police*, *Spider Veins*, and

One Tree Hill. Her theatrical credits include Second Thought Theatre, Kitchen Dog Theater, Texas Shakespeare Festival, WaterTower Theatre, Theatre Three, Trinity Shakespeare Festival, The Undermain Theatre, and The Dallas Theater Center. She is a multiple recipient of the DFW Critics Forum Award for Best Actress. She is also a voiceover artist, playwright, and theatre director. She loves to read, watch documentaries, and play with her ukulele and her cat and her super talented husband Alex Organ.



Thomas Ward

(MASTIFF) Thomas is thrilled to be returning to Theatre Three after appearing in last season's *The Adding Machine*. Previous DFW credits: *Twelfth Night* (Trinity Shakespeare); *Straight White Men*, *Martyr* (Second Thought Theater); *10 out of 12* (Undermain Theatre); *Wait Until Dark*, *The Explorers Club*, *Talking Pictures*, *International Falls* (Stage West); *Hand To God*, *All My Sons*, *Humble Boy*, (WaterTower Theatre). Other regional credits include Actors Theatre of Louisville, Alabama Shakespeare Festival, and Georgia Shakespeare. Also a writer, Thomas's play *International Falls* is currently in post-production as an indie feature film starring Rachael Harris, Rob Huebel,

and Kevin Nealon. He holds a MFA in acting from the University of Alabama/Alabama Shakespeare Festival Professional Actor Training Program and a BA from Abilene Christian University.



Felicia Bertch

(MOOR-HEN) is honored and delighted to be back at Theatre Three and in such fine company! She received her MFA in Acting at the University of South Carolina and studied physical theatre arts in Paris, NYC and Chicago. She has lived and worked professionally as an actor, clown and model all over the country and abroad. Felicia is currently the Head of the BFA Performance Program at the University of Texas at Arlington and has taught, directed, devised, and choreographed at various institutions and theaters nationally and internationally. Felicia hates olives and she hates standing still. But stories and laughter are not as hateful to her. She is rarely bored. www.feliciabertch.com

UPCOMING PRODUCTIONS AT T3

Solstice

A New Holiday Adventure

WRITTEN BY
JONATHAN NORTON
WITH CONTRIBUTIONS BY
CHERISH ROBINSON AND
JANIELLE KASTNER

06
DEC
THRU
DEC
30
2018

THEATRE 3

JEFFREY SCHMIDT
Artistic Director

MERRI BREWER
Managing Director



A DOLL'S HOUSE

October 12 – November 4, 2018
By Henrik Ibsen | Adapted & Directed by Joanie Schultz

WaterTower Theatre
at the Addison Theatre Centre

15650 ADDISON RD
ADDISON, TEXAS 75001

BOX OFFICE: (972) 450-6232
WATERTOWERTHEATRE.ORG

COME GASP TOGETHER!



Introducing a new arts media organization for North Texas

News, reviews, interviews, calendar listings and feature stories on the performing and visual arts. Join us for a new era of arts journalism

Metropolitan Arts Media, Inc. operates as a non-profit organization under code 501(c)(3)

THE JAC ALDER LEGACY FUND *Legacy Donors*

\$75,000

The John & Bonnie
Strauss Foundation

\$50,000

Janet Spencer Shaw

\$25,000

Dianne & Marion Brockette
David G. Luther, Jr.

\$10,000

Stan Graner & Jim McBride
Sally Hansen
Ms. Elizabeth Rivera
The Eugene McDermott Foundation

\$1,000 – \$9,999

Ida Jane & Doug Bailey
James Lee Blackwell
Mr. Bill Bond
Mason Brown Family Foundation
Ms. Suzanne Burkhead
Meriam Calabria
George & Jo Ann Caruth
Kay Champagne
Andrea "Sid" Curtis
Dede Dusen
Cathy & Bob Estrada
Laura V. Estrada
Richard Ferguson
Elaina & Gary Gross
Craig A. Haynes
Nancy & Solomon Israel
Mrs. Jo Kurth Jagoda
Ms. Emily Jefferson
Veletta Forsythe Lill
& John C. Lill
Lydia MacKay
Wilson & Gwyn Mason
Tom & Phyllis McCasland
Ms. Elya Naxon
Paul & Joan Ridley
Dana Whitehead Rigg
Eileen & Harvey Rosenblum
Ken & Susan Swan Smith
Daniel Tamez

Patricia A. Vaughan
& Barbara S. Turner
Charlie & Laura Weems
Scott & Susan Williams

\$500 – \$999

Anonymous
Ann Abbe
Robert & Diane Alder
Alan & Ann Bogdanow
Carol L. Croy
Gabe & Carol Dallal
Bobby & Anne Fincher
Richard & Rozelle Gilman
Fred J. Gross Memorial Charitable
Fund of the Dallas Jewish
Community Foundation
Gregory Hahn
Mary Anne Hardison
Barbara K. Materka
Sam & Barbara McKenney
Joseph & Lucille Montag
Gift in honor of Janet Shaw
Frank Sulzbach
Weathers Family Charitable
Nina Works

\$250 – \$499

Ralph & Jo Blackburn
James D. Brown & Jerry A. Knight
Bill & Fran Carter
Michael & Christine Cluff
Ms. Connie Coit
Mary Collins Agency
Mr. & Mrs. Michael E. Crossley
Michael L. Dailey
Linda M. Lee & Jay Isham
William & Cynthia Meier
Chris Rajczi
Judy & Jack Schecter
Gary & Genie Short
Walt & Gigi Steele
Van Pelt & Associates
Chris Westfall &
Lisa-Gabrielle Greene

\$10 – \$249

Diana Behannese

Chad Barton
Ms. Frances Blatt
Martha Ann Cates
Merri Brewer & Jeffery Crain
Katherine Church
Diana Clark
Mr. Raymond J. Clark
Karen Davis
Chuck Donaldson
Jim Dykes
Mrs. Francis Estes
Robyn Flatt
Richard L. & Kay Fleming
Gregory Gerardi
Lane Gorman
Bob & Marilyn Halpin
Diane Haselroth
Cherry Haymes
Ms. Jean B. Hecht
Tena Hehn
Barry Herbert
Judy Hollis
Ms. Jane Hook
KEMB
Jeff & Cora Hurst
Steve Krant
Eric Laub
Jack & Jo Ann Leavitt
Grace McDonald
Ms. Michelle Mew
Ms. Lisa C. Miller
Erika & Joel Nannis
Judy & George Nassif
Ellen Osburn
John & Julie Parolisi
Ms. Susan Read
Durel & Barbara Reid
Lynne Richardson
Ms. Ruth May Rydell
Mr. & Mrs. Gregory Shinn
Mr. Michael Skotnik
Jean & Neal Smith
Ete Szuts
Lane Gorman Trubitt, PLLC
Barbara Turner
Mrs. Helen C. Walker
Alan & Gloria Weinblatt
Rod Wilson
R.G. Zachariadis

**To give to the Jac Alder Legacy Fund, please
contact Theatre Three at 214-871-3300**

Updated 10/15/2018

T3 PATRONS • THE ANNUAL FUND

Theatre Three is committed to recognizing the donors who ensure our ability to make world class theatre here in Dallas. Join this list of wonderful patrons and make a gift to Theatre Three's Annual Fund today! While we work diligently to ensure that everyone is acknowledged properly for their contributions, sometimes mistakes are made. If you have a correction to request – PLEASE, call our Development Associate, Charlie Beavers at (214) 871-3300 x101 to ensure that you are recognized accurately in the future. *This list represents gifts received between October 13, 2017 and October 12, 2018*

THEATRE ANGELS \$10,000 & above

Ms. Janet
Spencer Shaw
The Shubert
Foundation
The John & Bonnie
Strauss Foundation
The Estate of Ms.
Brenda Stubel

Nesha & George
Morey
June S. Morgan
Margot B. Perot
Blair Pogue
Harry S. Moss
Foundation
Mr. & Mrs. Warren
L. Rubin
Karn & Jennifer
Schmidt
Jerry Setliff & Joyia
Elinson
Don & Norma Stone
Texas Instruments
Foundation
Victoria & Jack
Tutterrow
Mr. & Mrs. Charles
Weems
Communities
Foundation

LEADING PLAYERS \$500–\$999

Edward & Lisa Ahnert
Mark Blaquiere
Kay Champagne
Raymond Clark
Michael & Christine
Cluff
Shirley Danner
Claudia Davis
Laura V. Estrada
Larry & Diane
Finstrom
W. John Glancy
Steve Krant
Chuck & Lolisa
Laenger
Sam & Barbara
McKenney

Joseph Montag
Jan Nimmo,
In memory of
Dan Nimmo
Chris Rajczi
Rick Russell
Deborah & Craig
Sutton
Ken & Susan Swan
Smith
Kathy S. Ward
Paul Wingo
Blue Cross Blue
Shield
ExxonMobil
Foundation
True North Advisors
LLC
Weathers Family
Charitable Fund
of CFT

SUPPORTING PLAYERS \$250–\$499

Ann Abbe
Mr. Todd Bahner
Dr. Barbara S. Baxter
Rosanne Bell
John Bell, Jr.
Craig & Kass Boleman
Judith Calvert
Carol L. Croy
Sid Curtis
Michael L. Dailey
Gabe & Carol Dallal
Dede Duson
Ray Fowler, in
Memory of Alpha A.
Fowler
Mr. & Mrs. Jack W.
Hawkins
Rita M. Kliebert

Carol & George
Kondos
Ms. Judy Lawhorn
Harry Malpass
Michael & Janine
Mason
Barbara F. Materka
Tom & Phyllis
McCasland
Michelle Prejean
Rodolfo E. Salas
John McCafferty &
Lorraine Sear
Dr. Joan M. Tamez
Liza P. Urso
Drayton Insurance
Brokers, Inc.
SoloShoe
Communications
The Dallas
Foundation

BACKSTAGE BENEFACTORS \$125–\$249

Anonymous
Charles & Susan
Arnett
James & Danna
Bigner
Ms. Frances Blatt
Mr. & Mrs. Gregory K.
Boydston
Susan Carnell
Bill & Fran Carter
Carol Jablonski &
Michael Dill
Harry J. Durstine
Dana Edwards
Harryette Ehrhardt
Lee & Paula Eilbott
Ms. Jane Gaines

Bob & Barbara
Herbison
Kelly K. Lane
Harriet A. Little
Paul & Claire McLin
David & Wilma Milne
Nancy & Joe Moore
Erika & Joel Nannis
Mr. & Mrs. Jim
Nugent
Mr. Patrick Parise
Larry & Carol Peters
Durel & Barbara Reid
Lynne Richardson
Patricia L.
Shaughnessy
Robert & Lynne
Thompson
James F. & Barbara
Wallis
Paul & Alison Wright

FRIENDS \$50–\$124

Anonymous
Craig & Mary
Anderson
Mr. Curtis Bagley
Ms. Bettye C. Barnes
Mike & Susan
Bartlett
Ms. Sheri Beemer
Ms. Taunee S.
Besson
Henry & Annie Bivins
Dr. Jo Ellen Bogert
Mr. Robert Boyer
Merri Brewer
Charles & Diana
Briner
Jeanna Camp
H.E. & Carol Canada
Mrs. Rita Clinton
Mr. John S. Davies
Travis & Veronica Day
Dr. John & Bonnie
De Passe
Janet Domaracki
Ruth McAlester Duff

Mr. Joshua Dwelle
Tim and Tricia Elliott
Mr. R. Bruce Elliott
Dorothy E. Fischer
Mary & Bob Fleming
Robert Forner
Drusilla Francis
Mr. and Mrs Mark
Fritz
Mrs. Amy Galley
Catalina Garcia
Doug & Linda Gilpin
Mr. James Glenn
Shirley Ann Grannan
Philip & Gloria Gray
Jack & Lana Greeley
Bob & Janet Hadeler
Mark Haley
Mark & Lynda
Hamilton
Gerald & Francis
Hare
Rita Harvey
David & Cherry
Haymes
Ms. Jean B. Hecht
Christine Hepfer
Morley & Cheryl
Herbert
Bob Hess & Doug
Miller
Dr. Pamela R. Hill
Mary A. Ingram
Mr. Mark Jacobs
Sue & Phil John
Melinda Johnson
Mr. Parris Jones
Ms. Carolyn Kacena
Mr. Douglas Kennedy
Caryl Keys
Elaine Klobe
Juris & Carolyn
Laivins
Pam Lange
Jack & Jo Ann Leavitt
Linda M. Lee &
Jay Isham
Katy Lemieux
Mr. Alan H Levi

Mrs. Susan Lichten
Carol Ann & Dan
Luby
Gregory & Maryam
Lush
Ms. Judy Mathis
Ms. Frances McGlinn
Preferred Technology
Solutions
Kyle Messerschmitt
Leon Miller
Mike & Gayla Miller
Ms. Trisha Miller
S.D. Moore
Dean & Danette
Morgan
Stephen Flach &
Sharron Morgan
Madeline Morris
Diana Muckleroy
Robert A. Olson
Ms. Cathy O'Neal
Mark Oristano
Ms. Carlene
Peal-Sconce
Dr. Frank Perez
Mary Petterborg
David Pryor
Charles & Susan
Ramirez
Dr. & Mrs. Peter
C. Ray
Bonnie Rea
Diane Reed
Ms. Margie Reese
David W. Ricker
Dana Whitehead
Rigg
Ms. Elizabeth Rivera
Paul & Stephanie
Rula
Lisa Ryan
Ms. Ruth May Rydell
Melanie Lynn
Sanders
Maxwell Scarlett
Gregory & Victoria
Shinn
Deborah Siddens

Margaret Sloman
Kent Smith
Nancy Spence
Conni & Bill St.
Angelo
John & Michele
Stephens
Susan & John Stetter
Robert Todd
John & Marilyn Tolle
Mr. & Mrs. David
Townsend
Cynthia Trochu
Mr. & Mrs. Tom
Tunks
Mr. John Viola
Isaac Leaverton &
Matthew Waite
Mrs. Amanda West
Mr. Dale A. Wheeler
Clark & Jane
Willingham
Mr. Richard Wills
Ed & Ylva Wolfgang
Ken & Anita Wrobel
Bill Zeeble & Nicole
Leblanc
Anne Zhang
Mr. Zoltan Zsohar
Dallas Jewish
Community
Foundation
Maguire Oil
Company

IN KIND DONORS

Sid Curtis
SoloShoe
Communications,
LLC
Whole Foods Market



CELEBRATING 50 YEARS
of TRANSFORMING
LIVES THROUGH THE ARTS

TACA CELEBRATES THE TRANSFORMATIVE

IMPACT OF THE ARTS

FOR ALL CITIZENS OF DALLAS

2017 TACA GRANT AWARD RECIPIENTS

African American Repertory Theater • Arts District Chorale
AT&T Performing Arts Center • Avant Chamber Ballet • Big
Thought • Blue Candlelight Music Series • Bruce Wood Dance
Project • Cara Mia Theatre Company • Chamber Music
International • Chamberlain Ballet • Children's Chorus of
Greater Dallas • Cry Havoc Theater Company • Dallas Bach
Society • Dallas Black Dance Theatre • Dallas Chamber Music
Society • Dallas Chamber Symphony • Dallas Children's
Theater • Dallas Symphony Orchestra • Dallas Theater Center
Dallas Winds • Dark Circles Contemporary Dance • Echo
Theatre • Fine Arts Chamber Players • Greater Dallas Youth
Orchestra • Junior Players • Kitchen Dog Theater • Lone Star
Wind Orchestra • Lyric Stage • Nasher Sculpture Center
Orchestra of New Spain • Orpheus Chamber Singers • Plano
Civic Chorus • Plano Symphony Orchestra • Sammons
Center for the Arts • Second Thought Theatre • Shakespeare
Dallas • Soul Rep Theatre Company • Teatro Dallas • Texas
Ballet Theater • Texas Winds Musical Outreach • The Black
Academy of Arts and Letters • The Dallas Opera • Theatre
Three • TITAS • Turtle Creek Chorale • Undermain Theatre
Uptown Players • Voices of Change • WaterTower Theatre

TACA believes in the transformative power of the arts and their ability to ignite conversations that demonstrate respect, offer exploration, examine personal challenges, celebrate diversity, and tender hope, joy, understanding and laughter.

214.520.3930 taca-arts.org

Photo courtesy of TITAS

