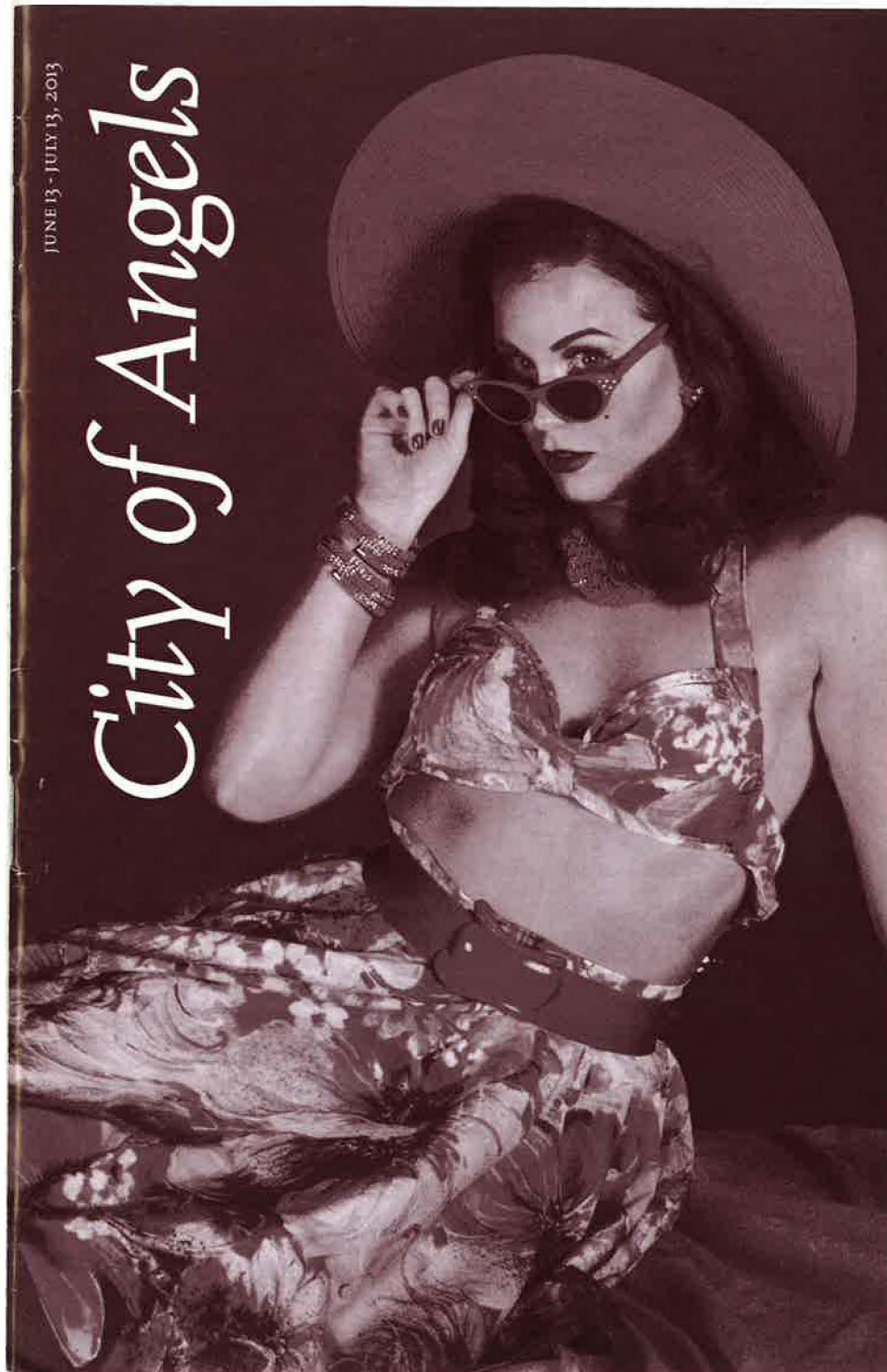


JUNE 13 - JULY 13, 2013

City of Angels



THE 52nd SEASON:

JOURNEY THROUGH TIME

THEATRE 3

NORMA YOUNG ARENA STAGE 2013-2014

SO HELP ME GOD!

Aug. 8 - Sept. 1

a comedy by Maurine Dallas Watkins

ASSASSINS

Sept. 26 - Oct. 27

a musical by Stephen Sondheim and John Weidman

OTHER DESERT CITIES

Nov. 21 - Dec. 15

a drama by Jon Robin Baitz

ON THE EVE

Jan. 16 - Feb. 9

a new rock musical by Seth Magill, Shawn Magill, and Michael Federico

LESS THAN KIND

Mar. 6 - 30

a comedy by Terence Rattigan

SEMINAR

April 24 - May 18

a comedy by Theresa Rebeck

BY THE WAY, MEET VERA STARK

Jun. 19 - Jul. 13

a musical by Pulitzer Prize-winner Lynn Nottage

THEATRE TOO 2013-2014

AVENUE Q

Continuing in Theatre Too

a musical by Robert Lopez, Jeff Marx, & Jeff Whitty

I LOVE YOU, YOU'RE PERFECT, NOW CHANGE

Jan. 9 - Feb. 16

a musical by Joe DiPietro & Jimmy Roberts

Tix: 214-871-3300 or www.theatre3dallas.com

□ T3 PEOPLE

BOARD OF DIRECTORS

CHAIR Elizabeth Rivera

LIAISON, CITY OF DALLAS CULTURAL COMMISSION
Lark Montgomery

BOARD MEMBERS Jac Alder, Marion L. Brockette, Jr.,
Suzanne Burkhead, Laura V. Estrada, Sally Hansen,
David G. Luther, Victoria McGrath, David M. May,
Margie J. Reese, Dana W. Rigg, Eileen Rosenblum,
Ph.D., Scott Williams

HONORARY BOARD MEMBERS Virginia Dykes, Gary
W. Grubbs, John & Bonnie Strauss

ADMINISTRATION

PRODUCER-DIRECTOR Jac Alder

MANAGING DIRECTOR Cory Norman

COMPANY MANAGER Terry Dobson

DIRECTOR OF BUSINESS AFFAIRS Joan Sleight

IN-HOUSE ACCOUNTANT Wendy Kwan

DIRECTOR OF PUBLICATIONS & COMMUNICATIONS

Kimberly Richard

IT MANAGER Nick Rushing

EXECUTIVE ADMINISTRATIVE ASSISTANT

Adele Acrey

HOUSEKEEPING Kevin Spurrier

PRODUCTION

TECHNICAL DIRECTOR Daniel Pucul

MUSICAL DIRECTOR Terry Dobson

RESIDENT ARTISTS Bruce R. Coleman,

Jeffrey Schmidt, & David Walsh

PRODUCTION STAGE MANAGER

Katie Marchant

APPRENTICE STAFF

Kaitlin Forsman, Charles Wallace

INTERN STAFF

Glory Barganier, Jessica Helton

CUSTOMER SERVICE

CUSTOMER SERVICE MANAGER

Amy Mills Jackson

HOUSE MANAGER Nancy Meeks

DAYTIME BOX OFFICE MANAGER

Darius Warren

EVENING BOX OFFICE MANAGER

Fred Faust

BOX OFFICE AGENTS

Tony Banda, Sally Cole, Chris Sanders

□ ON OTHER STAGES

AT&T PERFORMING ARTS CENTER

JUN 11 - 23 *Traces*

BATH HOUSE CULTURE CENTER

MAY 31 - JUN 22 *Festival of Independent Theatres*

DALLAS CHILDREN'S THEATER

JUN 21 - JUL 14 *The True Story of The 3 Little Pigs*

DALLAS SUMMER MUSICALS

JUN 25 - JUL 7 *Flashdance*

DALLAS THEATER CENTER

JUL 2 - AUG 18 *Fly*

EISEMANN CENTER FOR THE

PERFORMING ARTS

JUL 9 - 21 *Sister's Summer School Catechism*

JUBILEE THEATRE

MAY 17 - JUN 16 *Knock Me A Kiss*

KITCHEN DOG THEATER

MAY 24 - JUNE 22 *New Works Festival*

POCKET SANDWICH THEATRE

MAY 17 - JUNE 22 *The Odd Couple - Female Version*

JUL 5 - AUG 17 *Star Trip II - Hats of Horror*

SECOND THOUGHT THEATRE

JUN 6 - 29 *Gruesome Playground Injuries*

SHAKESPEARE DALLAS

JUN 12 - JUL 20 *A Midsummer Night's Dream*

JUN 20 - JUL 19 *Pericles*

TRINITY SHAKESPEARE FESTIVAL

JUN 11 - 30 *The Taming of the Shrew*

JUN 12 - 30 *Julius Caesar*

UNDERMAIN THEATRE

MAY 29 - JUN 15 *An Illiad*

UPTOWN PLAYERS

JUN 21 - JUL 7 *Songs for A New World*

For the theatre's 50th Anniversary (2011) Theatre Three's main stage has been named the NORMA YOUNG ARENA STAGE in honor of the theatre's founding artistic director. Ms. Young, a Dallas native, served the theatre as director, leading actress and administrator from the theatre's founding in 1961 until her death in 1998.

Theatre Three thrives on her legacy of artistic and intellectual vigor, her wisdom and her continuous quest for the perfect synthesis of authors, actors and audiences.

This playbill is a publication of Theatre Three, Inc., 2800 Routh Street, Suite 168, Dallas, Texas 75201, 214-871-3300, www.theatre3dallas.com in support of *City of Angels* (the seventh show of Theatre Three's 2012 - 2013 Season on the Norma Young Arena Stage).

PLAYBILL EDITORS: Jac Alder & Kimberly Richard

PROOFREADER: Adele Acrey ILLUSTRATIONS: Joe Howard

PHOTOGRAPHY: Jeffrey Schmidt & Bruce R. Coleman

DESIGN: David W. Radabaugh



Both Theatre Three and Theatre Too have Hearing Assistants devices which may be checked out (without charge) from the box office. These discrete devices enhance the performance experience for audience members with any degree of hearing limitation. The box office personnel can provide you with the devices either before the show or at intermission. Theatre Three's staff and board are most grateful to donors Carolyn Wickwire and Dennis West, who provided the grant that allows us to offer this enhancement to our patrons.





City of Angels

MUSIC BY Cy Coleman, LYRICS BY David Zippel, &
Produced by Special Arrangement with Tams-Witmark Music Library, Inc.

THE NORMA YOUNG ARENA STAGE

ARTISTIC STAFF

DIRECTOR/SET DESIGN/COSTUME
DESIGN

Bruce Richard Coleman

MUSICAL DIRECTOR

Terry Dobson

VOCAL COACH

Vonda K. Bowling

LIGHTING DESIGN

Carl Munoz

SOUND DESIGN

Richard Frohlich

FIGHT CHOREOGRAPHY

Ashley White & Jeff Colangelo

PRODUCTION STAFF

AEA STAGE MANAGER

*Katie Marchant

TECHNICAL DIRECTOR

Daniel Pucul

PRODUCTION ASSISTANT

**Charles Wallace

PRODUCTION CREW

Katie Marchant, Jessica Helton,
Glory Barganier, Kat Teeter, Kaitlin
Forsman, Charles Wallace

MUSICIANS

PIANO/CONDUCTOR Terry Dobson

DRUMS/PERCUSSION Mike

McNicholas or Lane Harder

BASS Peggy Honea or Dennis
Langevin

WOODWINDS Ellen Kaner &
Michael Dill

CAST

QUARTET BARITONE

*Christopher J. Deaton

JIMMY POWERS

**Anthony Fortino

OFFICER PASCO, GUARD, ET AL

**Jonathan Garcia

PANCHO, LEUT. MANNY MUNOZ

Sergio Antonio Garcia

CLARA, ALAURA

Whitney Hennen

DONNA, OOLIE

*Lee Jamison

BUDDY, IRWIN

Jackie L. Kemp

STONE

*Gregory Lush

AVRIL, MALLORY

**Nikki McDonald

GABBY, BOBBI

**Kassiani Menas

QUARTET ALTO

**Grace Neeley

BIG SIX

Scott Nixon

QUARTET TENOR

**Ken O'Reilly

DR. YAMATO, EMCEE

**Darius-Anthony Robinson

STINE

*Alexander Ross

PETER, NEPHEW, ET AL

**Dustin Simington

QUARTET SOPRANO

**Sarah Elizabeth Smith

SONNY, DR. MANDRIL, ET AL

**Sam Swanson

BOOK BY Larry Gelbart

MUSICAL NUMBERS

ACT I

Prologue "City of Angels Theme" ANGEL CITY
FOUR

"Double Talk" STONE, ALAURA, BUDDY, STINE

"What You Don't Know About Women" GABBY
& OOLIE

"Stay with Me" JIMMY POWERS & ANGEL CITY
FOUR

"You Gotta Look Out for Yourself" JIMMY
POWERS & ANGEL CITY FOUR

"The Buddy System" BUDDY

"With Every Breath I Take" BOBBI

"The Tennis Song" ALAURA & STONE

"Everybody's Gotta Be Somewhere" STONE &
ANGEL CITY FOUR

"Lost and Found" MALLORY

"All You Have To Do Is Wait" MUNOZ & TRIO

"You're Nothing Without Me"

STONE & STINE

ACT II

Entr'acte JIMMY POWERS & ANGEL CITY FOUR

"Stay with Me" No. 2 JIMMY POWERS & ANGEL
CITY FOUR

"You Can Always Count On Me" OOLIE/
DONNA

"Stay with Me" No. 3 JIMMY POWERS

"It Needs Work" GABBY

Duet: "With Ev'ry Breath I Take" BOBBI &
STONE

"Funny" STINE

"Nothing Without You" Finale COMPANY

Cy Coleman

MUSIC

A classically-trained child prodigy and concert pianist turned popular songwriter and Broadway tunesmith, Coleman made his Carnegie Hall debut at age seven and by his late teens had become somewhat of a society darling, performing jazz piano in sophisticated New York nightclubs. By the 1950s, he turned to composing pop standards (with lyricists Joseph McCarthy Jr, Bob Hilliard and Hal David) for the likes of Frank Sinatra and Nat King Cole and ran his own New York nightspot, The Playroom. Teaming with clever lyricist Carolyn Leigh, Coleman wrote such hit songs as "Witchcraft" and "Firefly" before the pair composed their first two Broadway efforts--the spirited Lucille Ball vehicle *Wildcat* (1960), which produced the showstopper "Hey, Look Me Over", and the brilliantly brash Neil Simon musical satire *Little Me* (1962), with its seductive hits "I've Got Your Number" and "Real Live Girl" and its tour de force performance by TV star Sid Caesar as all seven male characters. In 1966, Coleman wed his rhythmic, upbeat jazzy scores to the words of veteran lyricist Dorothy Fields for the bouncy, insinuating score to *Sweet Charity* (based on Fellini's film, *Nights of Cabiria* and filmed by Bob Fosse in his 1969 directorial debut) and in 1973 for *Seesaw*, the less than successful--but nonetheless catchy--musical version of William Gibson's play *Two for the Seesaw*. Subsequently, he employed a variety of styles from country and western to blues for the intimate wife-swapping musical *I Love My Wife* (1977) and composed the bumptious circus musical *Barnum* (1980), which also marked his debut as a Broadway producer. Coleman has won three Tony Awards: for the comic operetta *On the Twentieth Century* (1978; with lyricists Betty Comden and Adolph Green); for his brilliant jazz-inflected score for the witty and stylish film noir musical *City of Angels* (1990; with David Zippel); and for the folksy, glitzy pastiche score for *The Will Rogers Follies* (1991; again with Comden and Green). In 1996, he released an album of songs for a proposed musical, *The Life* that included tracks by Liza Minnelli and George Burns. With lyrics by Ira Gassman, it is the story of the denizens of NYC's 42nd Street, including prostitutes and pimps. This, in turn, led to a full-scale Broadway mounting the following year. While the show had its share of fans, it only managed a run of just over a year. The composer's next full-scale stage musical wasn't produced until the 21st Century, and then in Amsterdam. Coleman wrote the music



for *Grace, The Musical* (2001), a fictionalized biography of actress-turned-princess Grace Kelly. Coleman composed his first film score for *Father Goose* (1964), which included the song *Pass Me By*, and composed the scores for a trio of Sydney Lumet-directed features: *Garbo Talks* (1984), *Power* (1986) and *Family Business* (1989).

David Zippel

LYRICS

Mr. Zippel's lyrics have won him the Tony Award, two Academy Award nominations, two Grammy Award nominations, and three Golden Globe Award nominations. His songs appear on over twenty-five million CDs around the world, and have been recorded by many great singers including Stevie Wonder, Christina Aguilera, Mel Tormé, Ricky Martin, Cleo Laine, Barbara Cook and Nancy LaMott. He made his Broadway debut with *City Of Angels* (music by Cy Coleman, book by Larry Gelbart), for which he received the Tony Award, the New York Drama

Critics Circle Award, the Drama Desk Award and (in London) the Olivier Award and Evening Standard Award. He also wrote the lyrics to the Broadway musical *The Goodbye Girl* (music by Marvin Hamlisch, book by Neil Simon) for which he received an Outer Critics Circle nomination. With eight-time Oscar winning composer Alan Menken, he wrote the songs for Disney's feature film *Hercules*. Michael Bolton recorded "Go the Distance" from that score, which was a #1 record and nominated for an Academy Award and Golden Globe. With Matthew Wilder, he wrote the songs for Disney's animated feature *Mulan*, which earned him his second Academy Award nomination. "Reflection," from *Mulan*, was recorded by Christina Aguilera and is featured on her multi-platinum debut album. Christina and David collaborated again with Todd Chapman to write the song "We're a Miracle," which was featured as the end title song for *Pokemon: The First Movie*, and on its #1 soundtrack album. With Mervyn Warren he wrote the end title for the Jennifer

Lopez movie *The Wedding Planner*. His lyrics for *The Swan Princess*, an animated feature with music by Lex De Azevedo, were nominated for a Golden Globe Award. With composer Andrew Lloyd Webber, he wrote the songs for the London and Broadway musical *The Woman In White*. He has contributed lyrics to the revues *A...My Name Is Alice*, *Diamonds* and, with composer Doug Katsaros, wrote the musical comedy *Just So*. With Wally Harper he wrote numerous songs for Barbara Cook, including "It's Better with a Band," which became the title song of a hit revue showcasing David's lyrics. *It's Better With A Band* has been presented Off-Broadway, at the Donmar Warehouse in London and at the Prince Music Theater in Philadelphia. In early 2003, Williamson Music began representing Zippel's music publishing interests and the administration of his catalogue, *In Your Ear Music*. In the same year, he completed *Princesses*, his own adaptation of the classic children's novel *A Little Princess* (music by Matthew Wilder, book by Cheri Steinkellner and Bill



LEFT TO RIGHT: Lee Jamison, Alexander Ross, Whitney Hennen, and Nikki McDonald

Steinkellner). He additionally has worked on *Buzz!*, a musical extravaganza about the life of Busby Berkeley (music by Alan Menken, book by Larry Gelbart); *Pamela's First Musical*, based on Wendy Wasserstein's children's book (music by Cy Coleman, book by Wasserstein); *N*, the story of Emperor Napoleon and his Josephine (music by Coleman, book by Gelbart); and *Lysistrata: Sex And The City State*. (Adaptation by Gelbart, music by Menken). A graduate of Harvard Law School, David Zippel is delighted not to practice law.

Larry Gelbart

BOOK

A pre-eminent screenwriter, librettist, director, and producer, Gelbart moved as a child with his family to California. His father was a barber, and used to cut the famous comedian Danny Thomas' hair. When Gelbart was 16, he went to work for Thomas, writing jokes, and then moved on to other top radio comics such as Bob

Hope and Eddie Cantor. Hope took Gelbart into television, where he met Burt Shevelove, and in 1958 the two of them set about the task of working through all 21 of the surviving comedies by the Roman playwright, Plautus. Together with composer Stephen Sondheim, they took four years writing and re-writing what became *A Funny Thing Happened On The Way To The Forum*. The show opened on Broadway in May 1962, and ran for 964 performances. Gelbart and Shevelove both won Tony Awards. Gelbart went to London in 1963 for the West End opening, and stayed for nine years. He wrote for Marty Feldman, and provided the screenplays for a number of movies, many of them uncredited.

Back in the USA, Gelbart started work on turning the 1970 film *M*A*S*H* into a television series. He won Emmys for his contributions - writing many of the almost 100 episodes 1972-83, as well as directing and serving as executive producer on the series. Gelbart made his stage debut as a director with a UK revival of *Forum*, which

transferred from the Chichester Festival to the West End in 1986. Three years later, *City Of Angels*, an ingenious and hilarious private eye spoof of a musical, for which Gelbart wrote the book (and won his third Tony), opened on Broadway. It was a stinging satire on Hollywood, and the indignities that screenwriters suffer in 'the ego-fuelled jungle warfare that rages on the West Coast', in particular, Gelbart's experience on the film *Tootsie*, the story of a 'resting' actor who masquerades as a woman in order to get a job in a television soap opera. Of its star, Dustin Hoffman, Gelbart was quoted thus: 'Never argue with a man who is shorter than his Oscar.' A legend in the business, renowned for his skill and wit, apart from his two big hits, *Forum* and *City Of Angels*, Gelbart's credits have included *Sly Fox*, *Mastergate*, *Jump*, and *Power Failure*. He has not emerged unscathed. In 1961, after experiencing immense difficulties getting *The Conquering Hero*, a show based on Preston Sturges' sentimental comedy movie, *Hail The Conquering Hero*, into New York for its



LEFT TO RIGHT:
Gregory Lush, Darius-Anthony Robinson,
and Sergio Antonio Garcia

eight-performance run, he is reported to have said somewhat wearily, "If Hitler is still alive, I hope he's out of town with a musical."

ARTISTIC STAFF

Bruce Richard Coleman DIRECTOR » Mr. Coleman has directed many musicals for Theatre Three. His favorites include *Bloody Bloody Andrew Jackson*, *Pippin*, [title of show], *Woody Guthrie's American Song*, *Once On This Island*, *A Grand Night for Singing*, *The World Goes 'Round*, *Rise and Shine*, *The Triumph of Love*, *A Dog's Life*, *Company*, *The 25th Annual Putnam County Spelling Bee*, and the first show he ever did at T3, *Lies and Legends: The Music of Harry Chapin*. Favorite musical projects from other theatres include *The Secret Garden*, *Once Upon A Mattress* and *Into the Woods* for ICT MainStage and *The Life, tick, tick,...BOOM!*, *The Who's Tommy* and the U.S. premier of *Closer to Heaven* for Uptown Players. This fall, Bruce will add two more musicals to his resume' when he helms *Assassins* for

Theatre Three and *Kiss of the Spiderwoman* for Uptown Players. Bruce has been associated with Theatre Three since 1985 and is currently on staff as Resident Artist.

Terry Dobson MUSICAL DIRECTOR » Mr. Dobson has been a multi-talented member of Theatre Three's Artistic Staff since May 1980. He currently serves as T3's Musical Director and Company Manager. His recent directing credits are *Idols of the King*, *Freud's Last Session*, *Art of Murder*, *Flaming Guns of the Purple Sage*, *Songs from an Unmade Bed*, *I Love You, You're Perfect*, *Now Change* (Theatre Three's most popular show), *The Roads to Home*, *Another Night Before Christmas* and *Six Dance Lessons in Six Weeks*. Prior directing assignments include *Murder on the Nile*, *The Big Bang*, *Crimes of the Heart*, *Only Heaven and Elegies: A Song Cycle*. Terry has performed with Casa Mañana, Dallas Theater Center, Flower Mound Performing Arts Theatre, Lyric Stage, Irving; and Theatre Arlington. He is a recipient of a Rabin

Award and of numerous Column Awards. Terry's new website is up and running. Please check it out at www.terrydobson.net. Sign his guestbook and let him know what you think!

Bruce Richard Coleman SET DESIGN/COSTUME DESIGN » Mr. Coleman has been an active member of the Dallas/Fort Worth theatre scene since 1985. As a set designer, his past achievements for Theatre Three include *The Roads to Home*, *Pippin*, and [title of show] as well as *Equus*, *History Boys*, *Thrill Me* and *Bent* for Uptown Players and *The Secret Garden*, *Into the Woods* and *Dracula* for ICT MainStage, as well as several *Black and White* sets for Pegasus Theatre. As a costume designer, Bruce has designed *Pippin*, *La Bete*, *Present Laughter* and *Bloody Bloody Andrew Jackson* for T3, *The Secret Garden*, *Into the Woods* and *Dracula* for ICT MainStage and six summers worth of Shakespeare for the Junior Players of Dallas. Bruce is currently on staff at Theatre Three as Resident Artist.



LEFT TO RIGHT: Jackie L. Kemp and Kassiani Menas



Vonda Bowling VOCAL COACH » Ms. Bowling has been a musical resource for T3 since 2008 and this will be her twelfth production. Past shows include: *Crazy for You*, *A Catered Affair*, *The Drowsy Chaperone*, *Blankity-Blank*, *Songs From an Unmade Bed*, *I Love You, You're Perfect*, *Now Change* (x2), *A Dog's Life* (Column Award Nomination), *The Light in the Piazza*, *Lost in the Stars* (DFW Theatre Critics Forum Award), *The 25th Annual Putnam County Spelling Bee*, and *Another Night Before Christmas*. Vonda is the co-founder of Dallas Young Artists and is the Middle and Upper School Choir Director at Greenhill School. She lives in Rowlett with husband Jeffrey and their two sons, Harrison and Mason.

Carl Munoz LIGHTING DESIGN » Mr. Munoz returns to Theatre Three for the second time this season. Since 2005, he has taken on the assignments of lighting shows on cruise ships, in Las Vegas and California. For the last three years, he has served as the tech

director for the city of Beaumont, Texas. He is currently the lead lighting tech for PSAB and recently designed the lights for the premiere of the new Dallas television show and Nouveau47's workshop production of *On the Eve*. He makes his home in Lewisville with his wife Kelly.

Richard Frohlich SOUND DESIGN » Mr. Frohlich, a T3 veteran, returns as our sound designer, making this his 28th show since 2006. His artistic skill and expertise have been rewarded as a 3-time Column Award winner in 2006, 2007 and 2011. Rich has designed sound for more than 50 productions at over a dozen area theaters since 2005, and he is a vocational video producer, founder of the award-winning Texas Radio Theatre Company. Since 2001, he has written and produced over 60 modern audio plays. Rich makes his home in Arlington with his wife Shanna and three children.

Ashley White & Jeff Colangelo FIGHT CHOREOGRAPHY » Ashley H. White and Jeff Colangelo are two of the founding members of SCDallas. They have a combined combat experience of over 15 years. Ashley discovered her love of stage combat while studying at The American Musical and Dramatic Academy in New York in 2003. She is also an award-winning director and enjoys discovering and pushing the instinctive nature behind any fight sequence. Jeff is a recent graduate of SMU and has worked vigorously as a fight director. He is also a writer and performer, recently debuting his original work at the Orlando Fringe Festival. Their fight direction & choreography has been seen all over the Metroplex, in Florida, and in New York. Since its creation in early 2012, SC Dallas has found its home as the only open resource for stage combat and movement instruction in the area. For more info on Ashley, Jeff, and SCDallas, visit www.stagecombatdallas.org.



LEFT TO RIGHT: **Dustin Simington, Sam Swanson, Jonathan Garcia, and Scott Nixon**

CAST

Christopher J. Deaton QUARTET BARITONE » Mr. Deaton returns to Theatre Three after appearing in *Blankity-Blank* in Theatre Too. He has 50+ regional productions to his credit, including 32 shows with Fort Worth's Casa Mañana Theater. In addition to his stage work, Christopher, a proud member of Actors' Equity Association, is Managing Producer of WishingStar Productions, LLC – visit wishstarpro.com for more information. Up next for him is *Rudolph the Red-Nosed Reindeer*® at the Majestic Theatre in Dallas, and *Miss Saigon* at Casa Mañana.

Anthony Fortino JIMMY POWERS » This is Mr. Fortino's Theatre Three debut, however, his acting credits include other Metroplex venues: Circle Theatre and the W. E. Scott Theatre, Fort Worth; and Lyric Stage, Irving. Another artistic interest for Anthony is singing in a barbershop quartet. He

is attending Texas Christian University in Fort Worth and lives in Overland Park, KS with his parents and three siblings.

Jonathan Garcia OFFICER PASCO, GUARD, ET AL » Mr. Garcia also makes his debut with us in this production, and is receiving his BFA degree from Stephen F. Austin State University, Nacogdoches, TX. Jonathan is from Weslaco, TX and makes his home in Dallas.

Sergio Antonio Garcia PANCHITO, LEUT. MANNY MUNOZ » Mr. Garcia, a Theatre Three veteran, debuted with us in the 2001 production of *The World Goes 'Round*. This will be his 13th production on our two stages. His most recent shows are *Bloody Bloody Andrew Jackson*, *The Drowsy Chaperone*, *Pippin*, *The LaVida's Landlord* and *Mack and Mabel*. Sergio's acting credits include Metroplex venues: Uptown Players, Dallas; Garland Summer Musicals, and ICT Mainstage, Irving. He has a degree in music education/voice from the University of North

Texas and will be starting graduate work this fall at Texas Woman's University. Sergio and his partner, John Merrifield make their home here in Dallas.

Whitney Hennen CLARA, ALAURA » Ms. Hennen returns to our stage and will be remembered for the role of Patsy in *Crazy for You*, and in the ensemble for *Pippin*. Her acting credits include work with Lyric Stage, Irving, and Uptown Players, Dallas. Whitney received her BA in dance at the University of North Texas, Denton. Her acting ability won her the Dallas/Fort Worth Theatre Critics Award for Best Actress as Norma Cassidy in *Victor/Victoria* for Uptown Players. In addition to acting, Whitney is also a teacher and choreographer in the Dallas-Fort Worth area.

Lee Jamison DONNA/OOLIE » Ms. Jamison is an actor, singer, and a dialect coach with a BFA in drama performance from the University of Oklahoma. A Theatre Three actor since 2009, Lee is back on our stage in her sixth

production. Other T3 credits include *Lost in the Stars*, *Tales from Mount Olympus*, *Why Torture is Wrong (and the People Who Love Them)*, *Pippin* and *Wild Oats*. Additional acting credits on DFW stages include Contemporary Theatre of Dallas: *The Blue Moon Dancing*; Dallas Children's Theater: *The True Story of the Three Little Pigs*; Uptown Players, Dallas: *Broadway Our Way*, *The Divine Sister* (2010 Column Award winner for Best Supporting Actress), *Closer to Heaven*, and *Equus* (2010 Column Award winner for Best Supporting Actress); Casa Mañana, Ft. Worth: *Rudolph, the Red-Nosed Reindeer*; Flower Mound Performing Arts Theatre: *Ruthless*; Lyric Stage, Irving: *Funny Girl*, *Showboat*, *Bye Bye Birdie*, and *Kismet*; and PFAM: *The Gifts of the Magi* and Betty Buckley's *Story Songs*. Lee has received two Column Awards for Best Actress in a Play.

Jackie L. Kemp BUDDY, IRWIN » Mr. Kemp makes his fifth appearance on our two stages and will be remembered for his roles as

Anton Diabelli in *33 Variations*, Vladimir Lenin in *Travesties*, Bejart in *La Bete*, and the roles of Louie, Morito and the CPA in *See What I Wanna See*. Jackie has also worked with area theatres including Theatre Coppel, Lyric Stage, Irving; Garland Civic Theatre, Runway Theatre, Grapevine; and ICT Main Stage, Irving. He received a 2011 Column Award for Best Featured Actor. Jackie makes his home in Garland with his wife, Pennie.

Gregory Lush STONE » Mr. Lush, another Theatre Three veteran, who debuted with us in 2006, and was last seen here as Garry in *Present Laughter*, is making his 11th appearance on our two stages. He will be remembered for his performance as Higgins in *Pygmalion* in 2007, as well as his work in *Bloody Bloody Andrew Jackson*, *Wild Oats*, *Sherlock Holmes in The Crucifer of Blood*, *Blankity-Blank*, *Trysts in Toledo*, *A Dog's Life*, *The Goodbye Girl*, and *Children of Eden*. Metroplex credits include *The Temperamentals* for Uptown Players, *The*

Birthday Party and *Penelope* for Undermain Theatre, as well as productions with Dallas Children's Theater, Dallas Theater Center, Kitchen Dog Theater, Shakespeare Dallas, and Second Thought Theatre, all in Dallas; and Stage West, Fort Worth. Regional credits include Victory Gardens in Chicago, IL. Film credits include *I Become Gilgamesh*, *The Jogger*, *Earthrise*, and *Arbor Day*. He is represented by the Kim Dawson Agency and makes his home in Dallas with his wife Maryam – whom he met here at Theatre Three!

Nikki McDonald AVRIL, MALLORY » Ms. McDonald is back at Theatre Three, having made her debut in the 2012 production of *Bloody Bloody Andrew Jackson* as a cowgirl, cheerleader, and in the ensemble. Nikki's acting credits include working with the Rover Dramawerks, Dallas, as Blondie in *Murder on the Orient Burlesque*; Kate in *Avenue Q* for Music Theatre of Denton; Stolen Shakespeare Guild, Fort Worth; Amber in *Hairspray* for Garland Civic Theatre;

and Shannon in *Larry Kramer Hates Me* for See What I Say Playworks and Upstart Productions in Dallas. Her film experience includes *Once is Enough*, and she received a Column Award Nomination for Best Featured Actress in an Equity Musical in 2013 for *Bloody Bloody Andrew Jackson*. Nikki lives in Dallas with husband Sam and her dog, Ozzie.

Kassiani Menas GABBY, BOBBI » Ms. Menas, a rising junior at the University of Oklahoma, is debuting with us in this production. Her regional/national theatre work was in the ensemble with the Music Theatre of Wichita in Kansas. Kassiani was a candidate for Best Actress at National High School Musical Awards in New York City in 2011. Another artistic interest of hers is baking, and she makes her home in Wichita, KS with her parents and two siblings.

Grace Neeley QUARTET ALTO » Ms. Neeley, a graduate of the University of Texas at Arlington, returns to our stage, having worked as an understudy for Kate in *Avenue Q* in Theatre Too.

However, she has performed in Metroplex venues including: Casa Mañana and Circle Theatre in Fort Worth, and Dallas Children's Theater and Level Ground Arts Theatre in Dallas. Her regional and national acting credits include: Pippi in *The Great American Trailer Park Musical*, Linda Lou in *The Best Little Whorehouse in Texas*, and Serena in *Legally Blonde, The Musical*. Grace was cast in the TV series *Chase*, and she did commercial work for Sweet Ballz cake balls. She lives in Fort Worth with husband Babs Ipaye, and their two dogs.

Scott Nixon BIG SIX » Mr. Nixon is back on our stage after a 15-year absence, since his 1998 debut as Walt in our production of *The Threepenny Opera*. However, he has been busy in other Metroplex venues: OnStage, Bedford; Theatre Coppell, Pocket Sandwich Theatre, Dallas; and ICT Mainstage, Irving. Scott's regional work includes the roles of Oberon in *Phantom* by Kopit & Yeston, and ensemble work in *Camelot*. He makes his home in Euless.

Ken O'Reilly QUARTET TENOR » Mr. O'Reilly, debuting with T3 in this performance, hails from New York, where he studied at The Eastman School of Music. He made Texas his home many moons ago, where he completed his undergrad work at The University of Texas at Austin. Ken has performed in many Metroplex venues including: Irving Community Theater, New Theatre Company, Dallas; Plano Children's Theater, and WaterTower Theatre, Addison. Some of Ken's favorite roles include Huck in *Big River*, Jesus in *Jesus Christ Superstar*, Joseph in *Joseph and the Amazing Technicolor Dreamcoat*, Tony in *West Side Story*, and Professor Bhaer in *Little Women*. He now resides in Frisco with his wife, Adele, his son, Joey, and daughter, Katie.

Darius-Anthony Robinson DR. YAMATO, EMCEE » Mr. Robinson debuted with T3 in 2008 and is back on our stage in his seventh show. Darius will be remembered for his roles in *Pippin* (Chita Rivera Male Dance Award '12), *The Drowsy Chaperone*, *The 25th Annual Putnam County Spelling Bee* and many others,

as well as himself in *It's Only Life* in Theatre Too. Acting credits in Metroplex venues include Anthony in the world-premiere of *Re-Designing Women* for Uptown Players; Ensemble/Stagger Lee in *A Staged Reading* for Dallas Theater Center; Snail in *A Year With Frog and Toad* for Dallas Children's Theater; *Rent* and *Hairspray* for Casa Mañana, and *Skimbleshanks in Cats* for Garland Summer Musicals. Additional area theatre credits include Garland Civic Theatre, ICT Mainstage, Irving; Level Ground Arts Theatre, Dallas; Theatre Arlington (ACT), and Theatre Britain, Dallas. Regional credits are with Midtown Arts Center and Theatre Under the Stars in Houston. North Carolina credits include *Showboat* and *Seussical, The Musical* at the Lees-McRae Summer Theatre, Banner Elk. New York credits include Alvin Ailey American Dance Theater, Duplex Cabaret Theatre, Lincoln Center for the Performing Arts, the Westside Theatre, and the one-night-only concert of *In The Heights* at the United Palace of Cultural Arts in Washington Heights.

Alexander Ross STINE » Mr. Ross returns to T3 after his roles in *Woody Guthrie's American Song* and *[title of show]* in our 2010 Season. His acting credits also include work with Dallas Theater Center and Uptown Players in Dallas, and Lyric Stage in Irving. Commercial work has been with TXU Energy. Alex lives in Frisco with his wife Jessica.

Dustin Simington PETER, NEPHEW, ET AL » Mr. Simington, a newcomer to Theatre Three, acquired his theatrical training at the University of North Texas and Collin County College. However, his experience includes work in Metroplex venues: Dallas Children's Theater, Collin Theatre Center, Plano; Greater Lewisville Theatre, Lyric Stage, Irving; and Runway Theatre, Grapevine. Dustin makes his home in Lewisville.

Sarah Elizabeth Smith QUARTET SOPRANO » Ms. Smith also debuts on our stage in this production but has acting credits with WaterTower Theatre and WaterTower's Out of the Loop Festival in Addison.

Sarah's regional and national experience include the roles of Woman 2 in *Putting It Together*, Dewey in *Circus Tracks*, Bad Idea Girl Bear and understudy for Kate Monster in *Avenue Q*, Panacea in *A Funny Thing Happened on the Way to the Forum*, and Louise in *Gypsy*. She received her theatrical training at Baylor University and makes her home here in Dallas.

Sam Swanson SONNY, DR. MANDRIL ET AL » Mr. Swanson, a graduate of the University of Arkansas, debuted with T3 earlier this season as Roland Maule in *Present Laughter*. Other theatrical work in the Metroplex has been with Dallas Children's Theater, Nouveau47 Theatre and Undermain Theatre in Dallas, and Stage West in Fort Worth. Sam can also be seen in commercial work for Texas Trust Credit Union. Other artistic interests include bass guitar and improv work at The Alternative Comedy Theatre here in Dallas. He lives in Arlington, just across the way.



LEFT TO RIGHT: Christopher J. Deaton, Grace Neeley, Sarah Elizabeth Smith, Ken O'Reilly, and Anthony Fortino



THE ANNUAL FUND

Thank you to all of our patrons who generously made contributions to Theatre Three's 2012-2013 Season. If you would like to make a donation to the Annual Fund, please fill out and return the form included in this playbill. Questions? You may call Cory Norman at 214-871-3300 ext 208.

PRODUCER'S CIRCLE

\$1000 or more

Anonymous
Mr. Jac Alder
Ida Jane & Doug Bailey
Susan E. Barkley
Lawrence & Elizabeth Barron
Floyd Durr & James Lee Blackwell
Anonymous
Dianne & Marion Brockette
Mason Brown Family Foundation
Ms. Suzanne Burkhead
George & Jo Ann Caruth
Tim Chase & Eric Powell
Hannah & Stuart Cutshall
Stan Graner & Jim McBride
James & Gayle Halperin
Harriet Halsell
Sarah M. Hansen
John & Meg Hauge
William & Jo Kurth Jagoda
Emily Jefferson
John Loneragan & Linda Niessen
Mr. & Mrs. David Luther Jr.
George & Nesha Morey
Dean Corbitt & Fred Penn Perot Foundation
Wm W. Richardson
Ms. Elizabeth Rivera
Eileen and Harvey Rosenblum
Enika Schulze
John McCafferty & Lorraine Sear
Ms. Janet Shaw
Ann Stuart
Victoria & Jack Tutterrow
Weathers Family Charitable Fund of CFT
Charlie & Laura Weems
Martha & Max Wells

LEADING PLAYERS

\$500 - \$999

Rae Allen & Claudine Sherrill
Morris S. Crim
Kathleen Cunningham & Randy Willis
Brig. Gen H.J. Dalton, Jr.
Kenneth Driggs
Virginia C. Dykes
Joan Eschrich
Laura V. Estrada
Lucy H. & Rick Fredrickson
Ms. Pauline Graivier
Elaina and Gary Gross

Fred S. & Jerri Grunewald
Henry & Mary Ellen Irving
Chuck & Lolisa Laenger
Wilson & Gwyn Mason
Mr. David May
Paul Coggins & Regina Montoya
June S. Morgan
Jan Nimmo In memory of
Dan Nimmo
John Owen
Mr. Patrick Parise
Charles & Janine Pulman
Joe and Mary Ring
Deedie Rose
June Saucer
Jerry Setliff & Joyia Elinson
Gary & Genie Short
Helen M. Sindermann
Mr. & Mrs. Robert S. Sloan
Margaret Sloman
O. Darwin & Myra N. Smith
Fund of The Dallas Found
Evelyn Smith
Brenda and Nelson Spencer
Gene & Marge Stockton
Don & Norma Stone
Frank Sulzbach
Dan Van Pelt
Patricia A. Vaughan
Scott Williams
Diana Winkelmann

SUPPORTING PLAYERS

\$250 - \$499

Craig & Mary Anderson
Ralph & Jo Blackburn
Cathey Ann Fears & Mark Blaquiere
Mr. & Mrs. Bruce Boardman
KEMB
Charles & Diana Briner
Col. & Mrs. Earl M. Buys
Kay & Elliot Cattarulla
Greg & Joan Chalkley
Kay Champagne
Tom Cornell
Cynthia M. Cummings
Mr. & Mrs. William A. Custard
Gabe & Carol Dallal
Mr. John Davies
Dede Duson
James & Kathryn Erickson
Jeanne & Sanford Fagadau
Larry & Diane M. Finstrom
Mary & Bob Fleming
David Forsythe
In Memory of Alpha A. Fowler
Lynn Frank
Joan Friedman

Gary & Edith Fritzsche
Dorothy Garland
Bob & Marilyn Halpin
Melinda Hartnett & Chris Ellis
Mr. & Mrs. Jack W. Hawkins
William Hendrix
Charles & Trudy Hess
Dr. & Mrs. Charles Hughes
John Humphrey MD
Mary Anne Ingram & Jim Schachterle
Audrey & Norman Kaplan
Mr. Jerry Knight
Carol & George Kondos
Steve Krant
Ms. Judy Lawhorn
Sam & Barbara McKenney
Judy Meagher
William & Cynthia Meier
Scot & Eileen Milvenan
Erika & Joel Nannis
Mal & Linda Noone
P.J. Peterson
Ms. Margie Reese
Dr. & Mrs. Murray Rice
Paul & Joan Ridley
Catherine Ritchie
Elfriede Russell
Rick Russell
Will & Mary Lou Smith
Joan Tamez
Hal & Carolyn Warnick
Chris Westfall & Lisa-Gabrielle Greene

BACKSTAGE

BENEFACTORS

\$125 - \$249

Barbara Alexander
Charles & Janie Barnhardt
John P. Bell, Jr.
Ms. Emily Beyette
James & Danna Bigner
Mr. & Mrs. Gregory Boydston
Mr. & Mrs. Robert Boyer
Paul & Beth Braziller
Meriam Calabria
Tim & Susan Carnell
Bill & Fran Carter
Martha Ann Cates
Rita Cavanaugh
Jim & Joleen Chambers
Jeff & Wendy Cook
Mr. & Mrs. John Cross
Carol L. Croy
Michael L. Dailey
Amon & Pauline Denur
Carol Jablonski & Michael Dill
Dr. & Mrs. Joseph Doak

Robert & Carol Eberhart
John & Harryette Ehrhardt
Bobby & Anne Fincher
Pat Gentry
W. John Glancy
Philip & Gloria Gray
Greg & Heda Hahn
Luclare Hamby
Larry & Christie Harrison
Rita Harvey
John & Sandi Hebley
Robert & Barbara Herbison
Sue & Phil John
Bill & Elaine Johnson
Barbara Kemp
Kurt & Judy Kleinschmidt
Joyce & Howard Korn
Ms. Bonnie Krauss
Mary & Joseph Kuhlmann
Lee & Kim Laird
Ms. Sue Magness
Mona Magnis
Bob & Patsy Magruder
Brian & Shelley Maher
Hilda S. McLaughlin
Mr. & Mrs. Mike Mitchell
Charlie & Anne Moon
E. H. & Sheila Moore
Nancy & Joe Moore
Mr. Thomas O'Keefe
Mildred Odell
Bill Pervin & Susan Chizeck
Robert & Pam Pope
Sue Prather
Patricia Rice
Dr. Hilda Ruch
Ms. Gail Sachson
Ellen Samuels
Fred & Betty Secker
Jean Ann & Rudy Ray Seward
Brooks & Vicki Shafer
Mr. Joshua Shurbet
Elaine Smith
Stephen & Susan Spencer
Chuck & Debby Stein
Pat Stodghill
John Sutherland
Barbara S. Turner
Ralph O. Weber
Paul & Alison Wright
Z. & Shirley Zsohar

FRIENDS

\$50 - \$124

Sarabeth Allen
Anne Allred
Dr. & Mrs. Wayne R. Applebaum
Mr. & Mrs. James Appleton
Mr. Randal Armstrong
Charles & Susan Arnett
George Arroyo

Mr. Curtis Bagley
Pat Baker, Jr.
Steve & Mary Baker
Ziona & Edwin Balaban
Marie Bannister
Ms. Bettye Barnes
Helen & Paul Barton
Richard Baxter
Dr. & Mrs. Steven A. Bell
Carl & Jeanette Benson
Taunee Besson
Barbara & Paul Bierbrier
Mr. & Mrs. Kenneth Bingham
John & Betty Birkner
Henry & Annie Bivins
Frances Blatt & Gene Raboy
Duncan & Elizabeth Boeckman
Dr. Jo Ellen Bogert
James & Arlene Booth
Bill & Sharron Boruff
Alison Botts
Edith Bourgeois
Dan Bourland
Ms. Martha Brooks
Robert & Patricia C. Brooks
Mrs. Nettie Brown
Larry & Talan Burgess
Mary Burkett
Bob & Sue Burns
Pat & Nora Burns
Ted & Carol Bywaters
Judith Calvert
Robert & Ruth Ann Cameron
H.E. & Carol Canada
Daniel & Marcia Carrithers
Mr. Louis Chapman Jr.
Mr. Daniel Clark
Chris & Martha Clark
Ms. Connie Coit
Sherri Colby
Terry & Ann Conner
Cory Coons & Emily Stadulis
D. Cooper
Randee & Colin Cope
Betty and Tom Cox
Jan Gartenberg & Don Alan Croll
William & Juaniza Cross
Ms. Lee Cullum
Elizabeth Cummins
Ms. April Davis
Claudia Davis
Jerry & Ruth Davis
Mr. & Mrs. Marvin DeMoss
Mike & Jane Dempsey
Ms. Lorri Dickstein
Ms. Janet Domaracki
Lewis & Bonnie Donaghey
Don & Barbara Dowling

Mr. Robert Downs
Ruth Duff
David & Maureen Ehrlicher
Lee & Paula Eilbott
Tim & Patricia Elliott
Ms. Bette Epstein
David & Alycia Finklea
Rick Croley & Ann Fiorelli
Paul Fitzgerald
Richard L. & Kay Fleming
Colleen Flickinger
Michael Fortin
Dawn Fowler
Chris & Lisa Fox
Lisa Fox
Bettie Francis
Ms. Chrystine Franklin
Ms. Natalie Friedman
Shannon Frink
Frances Fulton
Catalina Garcia & Rollin F. Gary
Mr. James Gerhardt
Mark & Era Gilbert
Doug & Linda Gilpin
Mike & Sandra Gist
Nancy Goble
Eileen Goldsteen
Barry & Pat Goukler
Shirley Grannan
Bobby & Judith Greenwood
In honor of Jac Alder and in memory of Norma Young
Ms. Willie Griffin
Mr. Fred Grinnell
Fred & Harriet Gross
Jay Stankiewicz & Don Groves
Bob & Janet Hadeler
Keith Rolla & Renee Hair
Jacqueline S. Hall
Mr. Alex Hamerman
Todd Cearlock & Steven Happel
John Harbin
Gerald & Francis Hare
Edgar Harp
Jim Hartley
Charles Michael & Collyn Hawn
Gregory Hawthorne
Mr. & Mrs. Craig Haynes
Al & Judith Hearne
Christiane Hepfer
Susan Herbert
Jim & Aloha Higdon
Lee & Mary Higdon
Dr. Pamela Hill
Jerry & Robin Holbert
Arthur & Dixie Hollers
John & Beverly E. Houston
Ernie & Elsie Hunt
Ms. Emily Jackson

☐ T3 PATRONS

SUPPORTERS

Theatre Three is supported by its Board of Directors, by subscribers, by funds from the **City of Dallas Office of Cultural Affairs, The Texas Commission on the Arts, The National Endowment for the Arts, and The Shubert Foundation**. Supporters also include **TACA**. Special in-kind support for Theatre Three's web site is provided by **QuickSilver Interactive**. **Momo's Pasta** is the Opening Night Restaurant Sponsor for *City of Angels*. **Dr. Delphinium** is Theatre Three's florist. A major contribution from the estate of **Marlene Webb**, a longtime subscriber, has established the Theatre Three Endowment Fund in support of the building and its equipment.

THE ANNUAL FUND (continued)

Mr. Hal Jacobson	Ms. Teresa Miller	Mr. & Mrs. Gregory Shinn
Albert & Lucille Jaffe	David & Wilma Milne	Betty & John Silander
John & Rusty Jagers	Mrs. LaJohn Molhusen	Bill & Brenda Sims
Howard & Marla Janco	Ms. Loretta Monson	Randall Skattum
Matt C. Jansha	Elizabeth Moore	Robert Skeen
Gene & Susan Johnson	Kip & Delynda Moravec	Dr. Nancy Slaughter
Mr. Parris Jones	Ed & Josephine Morton	Jay Murter & Tomas Soto
Mr. Coy Jordan	Nan Moser	Ms. LaNeil Spivy
Ms. Carolyn Kacena	Diana Muckleroy	Kevin Spurrier
Rich & Janeen Karm	Ms. Jo Ann Murray	Ms. Freda Stern
Michael Kay	Judy & George Nassif	J.D. & Nancy Stevens
Betty Keefe	Ms. Elya Naxon	Carolyn & Thomas Stewart
Betty & Tommy Keith	Pauline Neff	Billie Stone
Charlotte Kelly	Gregg & Debbie Nieman	Bonnie Stoner
Patrick & Judy Kelly	George Nilan, Jr.	Gary & Cathy Strum
Genell O. & Mark Kelso	Larry & Coco Nix	James F. Strunc & Mary
Mrs. Anne Kimbrough	Ms. Suzanne Oldham	Anne Gentry-Strunc
Elaine Klobe	Herbert & Faynell Parker	Ken Tapscott
Caryn Korshin	Patricia Parker	Nancy Strickland
Anna Kuznetsova	Linda Patston	Mrs. Gus Taylor
Peggy Ladenberger, Ph.D.	Mrs. Patricia Peiser	Anne Thames
Lonnie & Marilyn Lambert	Benjamin Pena	Glenn & Elise Todd
Mr. Steve Lamberti	David & Lyn Pesta	John & Marilyn Tolle
Steve Landregan	Mary Petterborg	Mr. Bruce Toplek
John H. & Pam Lange Jr.	Russell & Murphy Phillips	Ms. Eleanor Trachtenberg
James A. Latham, Jr.	Raymond & Sandra Prevott	Mr. & Mrs. Tom Tunks
Shula Lavie	Charles & Susan Ramirez	Max & Miriam Vernon
Nicole LeBlanc	Dr. & Mrs. Peter Ray	Jonathan & Nancy Walker
Jack & Jo Ann Leavitt	Charles & Clara Reed	Mr. & Mrs. Joseph Walker Jr.
Steve & Jeannine Lee	Mr. & Mrs. Richard Reed	Thomas E. & Charlotte
Mrs. Susan Lichten	Durel & Barbara Reid	Walker
Ms. Adalia Lim	Andy & Beckie Reisberg	James F. & Barbara Wallis
John F. & Ann Lubben	Mr. Joseph Revesz	Dr. & Mrs. Mark H. Walters
Carol Luby	Catherine Rich	Floyd & Nancy H. Watson
Dr. & Mrs. P.E. Luecke, Jr.	Rick & Claire Richker	Rod & Grace Weiland
Phil & Karen MacDonald	David Ricker	Mrs. Sara Whipple
Aurora Madrigal	Sam & Sharon Ricks	Jim and Tammy White
Mrs. Jane Malone	Ms. Dana Rigg	Lee C. & Valerie A. White
Ms. Nancy Marchant	David Rodgers	Audrey Wick
Elaine Marshall	Terry & Patricia Rosga	Michael Wiethorn
Kay Martin	Mr. David Ross	Bettye Wiggins
Bob & Phyllis Marwill	Elliott & Phyllis Ross	J. Kenneth & Alayne
Rev. & Mrs. William	Dewayne & Sharon Roy	Wilemon
Matthews	Nancy Rubin	Mr. Richard Wills
Raymond & Carolyn Maturi	Mr. & Mrs. Warren Rubin	Ellen Wilson M.D.
Kay Maxwell	Ken & Phyllis Rueckert	Ed & Ylva Wolfgang
Ms. Frances McGlinn	Ms. Ruth Rydell	Lee & Ramona Woodrum
Marcia McGoeys	Mr. Glenn Samford	Ken & Anita Wrobel
Victoria & Hunter McGrath	Betty Sarratt	Chris P. Xeros
Ricardo McKay	C. Schindler	Anne Zhang
Ms. Shirley McLean	Hal & Mary Jo Schneider	Linda Alesi & Alex Zuran
Gordon McMillan	Jules & Hazel Schoenberg	
K. Messerschmitt	Jim & Marilyn Schwartz	
Richard Meyrat	Norman & Susan Sereboff	
Kay Miller	Carol A. Sewell	
Leon Miller	Mr. Donald Shannon	
Mr. Richard Miller	Patricia L. Shaughnessy	

Donations given as of June 1, 2013

T3 PATRONS



Texas
Commission
on the Arts

THE SHUBERT
FOUNDATION



Office of Cultural Affairs
CITY OF DALLAS

TACA
Funding the arts
is our business

ART WORKS.
arts.gov

THE JAC ALDER FOUNDER'S CIRCLE

Theatre Three is honored to recognize the patrons and artists whose many years of support and dedication have made 50 years of continuous productions possible.

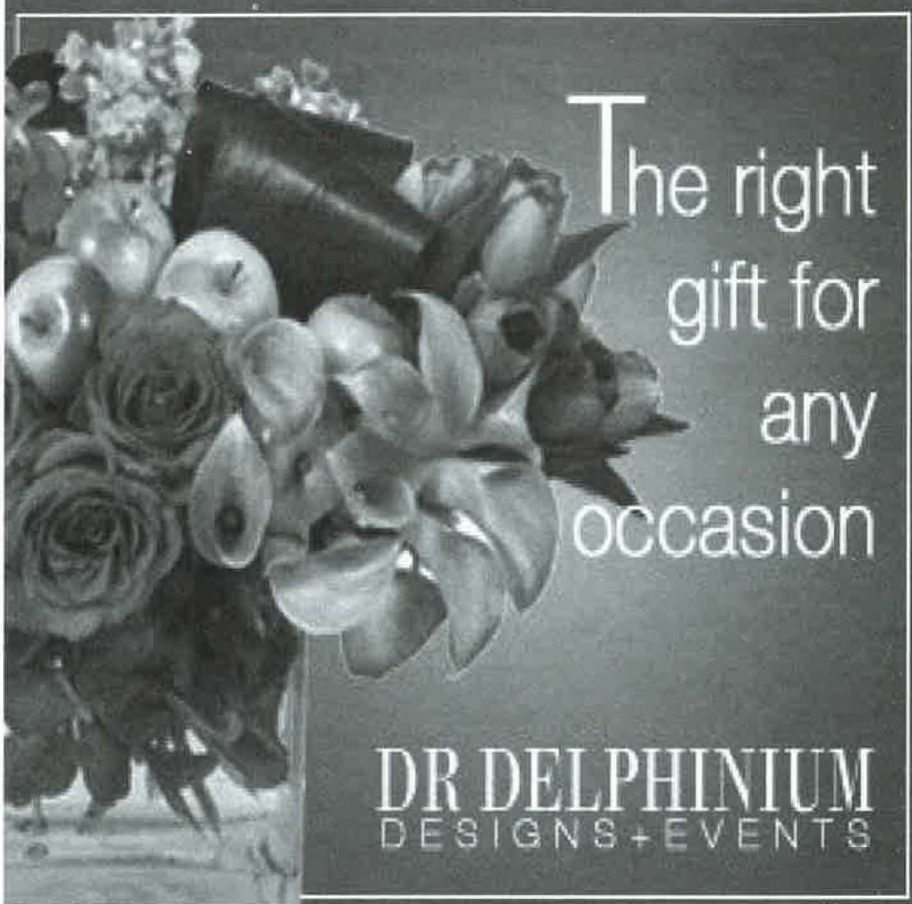
Rae Allen & Claudine Sherrill	Mr. Stephen A. B. Krant	Evelyn R. Smith
Harold R. & Marion Avery	Mr. James A. Latham Jr.	Chuck & Debby Stein
Ida Jane & Doug Bailey	Jim & Peggy Lubniewski	Gene & Marge Stockton
Lawrence & Elizabeth Barron	Mr. & Mrs. David G. Luther, Jr.	Pat Stodghill
Henry & Annie Bivins	Mona Magnis	Don & Norma Stone
Floyd J. Durr & James Lee Blackwell	Mrs. Jane Malone	John & Bonnie Strauss
Mr. & Mrs. Bruce C. Boardman	Mrs. Eugene McDermott	Frank Sulzbach
Mr. Bill E. Carter	Samuel R. & Barbara McKenney	Joan Winandy Tamez M.D.
Tom Cornell	Hilda S. McLaughlin	Peggy Townsley
Carol L. Croy	Scot & Eileen Milvenan	Barbara S. Turner
Dale & Claire Cunningham	June S. Morgan	Patricia A. Vaughan
Gabe & Carol Dallal	Nan Moser	Thomas E. & Charlotte Walker
Brig. Gen. Jerry Dalton	George & Judy Nassif	Charlie & Laura Weems
Mr. & Mrs. Peter J. Denker	Ms. Elya Naxon	Kathy Williams-Hunter
Mr. & Mrs. Amon DeNur	Patricia Rice	Harland Wright
Sam Y. Dorfman, Jr. M.D.	Mr. William Windsor	
Mark E. Dressendorfer	Richardson	
Virginia C. Dykes	Elizabeth Rivera	
Mrs. H. Mathews Garland	Drs. Eileen & Harvey Rosenblum	
Mrs. Leonard Graivier	Richard & Enika Schulze	
Stan Graner & Jim McBride	Joyia Elinson & Jerry L. Setliff	
Mr. Fred Grinnell	Jean Ann & Rudy Ray Seward	
Robert & Janet Haderler	Nancy S. Shamblin	
Mr. Alex Hamerman	Ms. Janet Spencer Shaw	
John & Meg Hauge	Gary & Eugenie Short	
John & Sandi Hebley	Robert S. Sloan	
Christiane Hepfer	Margaret D. Sloman	
Charles & Trudy Hess	Clarice Smith	
Ms. Carol Holgren	Mrs. Elaine Smith	
Emily Jefferson		

IN MEMORIAM

Supporters wishing to consider legacies to the theatre are eligible for professional financial advice through Theatre Three's development office. Contact Cory Norman at 214-871-3300, ext. 208.

Contributions have been made in memory of, or from the estates of:

Eleanor Bushman Berman, Fred and Mary Buchanan, Sam & Shirley Catter, Margaret Hatcher Coit, Bill Dallas, Gene Diskey, William T. Dobson, Scott Everheart, Dwain Fail, Javad Fiuzat, MD, Dr. Joel B. Goldsteen, Paula Goodlet, Oliver Hailey, Ann Ray Kelly, Lloyd W. Kitchens Jr., MD, Sidney Lynn, Anne Weeks Jackson, Jim Jackson, Lynn Mathis, Polly Lou McAdams Moore, Zane Prather, Masha Porte, Carolyn Ryburn, Frank Rey, Martin B. Roberts, Mary Blanche Scales, Charlotte E. Schumacher, Edward B. Summerhill, Lynn Townsley, May Tweed, Audrey B. Waite, June Webb, Marlene Webb, Evelyn Wilke, Martha Roselyn Wright, and Norma Young.



THE ANNUAL FUND

Dear Playgoer,

You are, in this letter, going to be asked to help the 2012-2013 Annual Fund Drive at Theatre Three. The campaign goes on all season, but in this playbill I really want to urge your immediate action.

You're holding this playbill in your hands to read it. So there's something I know about you. The basic thing I know is that you attend plays. (I like you already.)

Just as the playbill is in the hands of friends like you, the theatre itself is in the hands of friends. Yes, it takes actors, directors, authors (especially authors), designers and administrators to create theatre: but FRIENDS like you -- for over fifty years now -- have built Theatre Three's capacities, enlarged Theatre Three's range of services, and enhanced the theatre's contributions to building a community of imagination, empathy and insight.

Every reservation you make helps us grow. Every subscription you purchase empowers the art. The response you feel (and show) enriches every performance. Every friend you send or bring with you gains us ground. Our audience is our power source.

Let me be personal. I've been doing my job here for more than fifty years, and I am super proud of Dallas patrons and their eagerness to support the Arts. The achievements of citizen-artists have never been more impressive and certainly the creation of Arts facilities here is unmatched.

Since I'm being personal here, I'll tell you I take a certain pride in my personal participation in cultivating the improved "arts ecology" Dallas currently enjoys. But I never think I did anything on my own. It took friends' investment of time, talent and treasure.

Just as there's no limit on how large a gift we could use, there's also no limit on how small a gift we would appreciate to meet the goals of the 2012-2013 Annual Fund. So, figure out something that's in your middle range to contribute, and give us the honor of listing you in subsequent playbills as one of our valued friends.

Share in the achievement here. It's a wonderful act of friendship.

Sincerely,

JAC ALDER

Jac Alder

PRODUCER-DIRECTOR

YES! YES! YES!

Yes, I want to support Theatre Three's Annual Fund. Donation levels are as follows:

PRODUCER'S CIRCLE

Gifts of \$1,000 or more

LEADING PLAYERS

Gifts of \$500-\$999

SUPPORTING PLAYERS

Gifts of \$250-\$499

BACKSTAGE BENEFACTORS

Gifts of \$125-\$249

FRIENDS

Gifts of \$50-\$124

DONOR INFORMATION

NAME

address

city

state

zip code

e-mail

patron number (if known)

name (as you wish it to appear in the program)

☐ or check here to remain anonymous

PAYMENT INFORMATION

\$

total contribution

☐ My check is enclosed for the full amount or I wish to charge my donation to:

☐ Visa ☐ Discover ☐ MCO ☐ AMEX

credit card number

expiration date

CVV code

Bring or mail to:

Theatre Three, Inc.
2800 Routh Street, Suite 168
Dallas, Texas 75201

Donate online:

www.theatre3dallas.com



LIVE LIFE SIMPLY.™

WWW.POSTPROPERTIES.COM

**11 Communities in Uptown.
ONE Convenient Leasing Office
to Serve You: 3000 McKinney Ave.**

214.965.6565


POST®

UPTOWN DALLAS
APARTMENT HOMES



 **Facebook.com/postuptowndallas**