



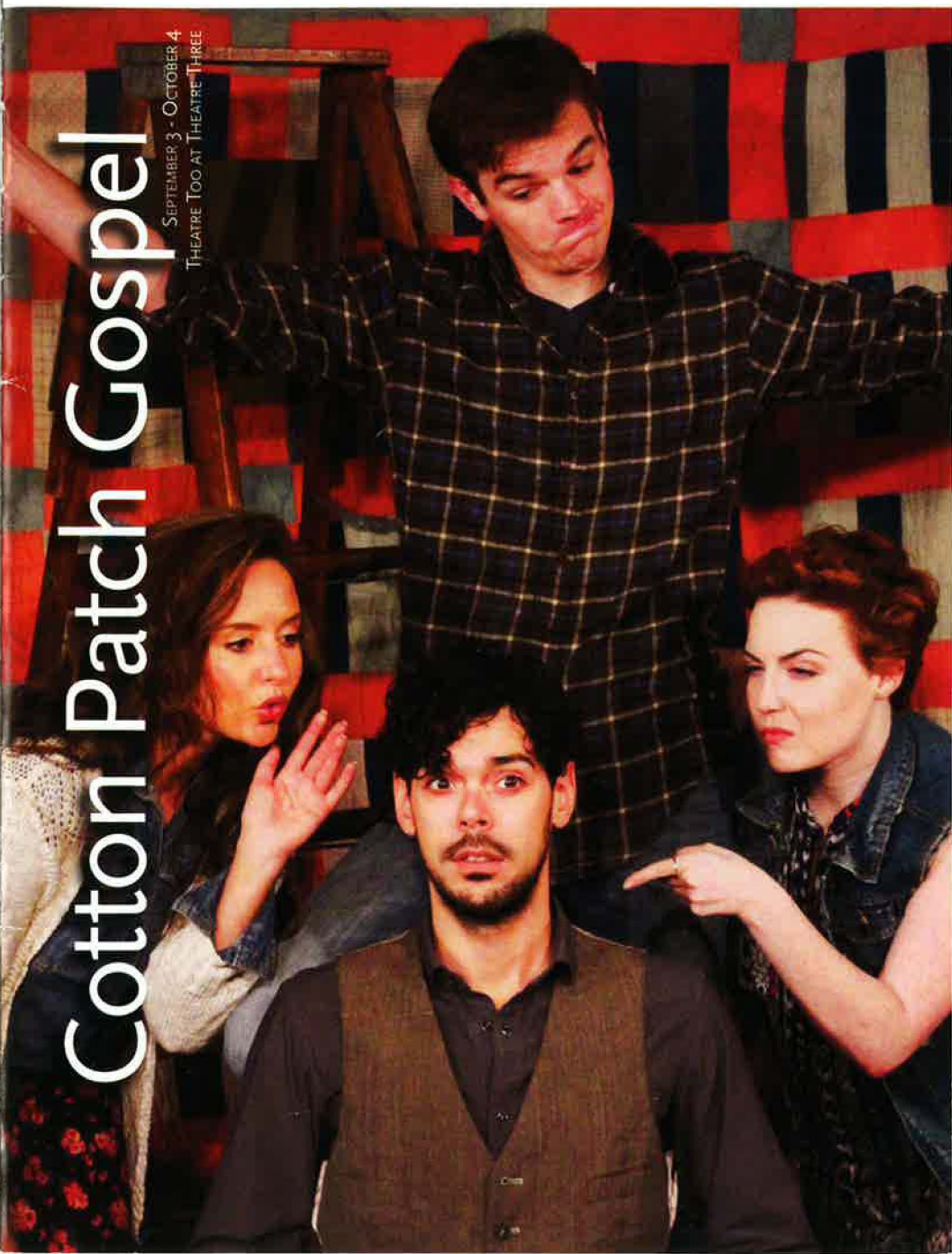
THEATRE 3

DALLAS

2015 - 2016 SEASON

Cotton Patch Gospel

SEPTEMBER 3 - OCTOBER 4
THEATRE TOO AT THEATRE THREE





THEATRE 3

2015-2016 SEASON



THE GLASS MENAGERIE

by Tennessee Williams
July 30 - August 30, 2015

FIX ME, JESUS

by Helen Sneed
September 17 - October 11, 2015

PICNIC

by William Inge
October 29 - November 22, 2015

THE FANTASTICKS

by Tom Jones and Harvey Schmidt
December 3 - 27, 2015

OIL

by Neil Tucker
January 21 - February 14, 2016

LIGHT UP THE SKY

by Moss Hart
March 10 - April 3, 2016

MEMPHIS

by David Bryan and Joe DiPietro
April 28 - May 22, 2016



T3 PEOPLE

BOARD OF DIRECTORS

CHAIR Scott T. Williams

BOARD MEMBERS

Marion L. Brockette, Jr., Suzanne Burkhead,
Raymond J. Clark, Sid Curtis, Katherine C. Eberhardt,
Laura V. Estrada, Sally Hansen, David G. Luther,
Jr., David M. May, Margie J. Reese, Dana W. Rigg,
Elizabeth Rivera, Eileen Rosenblum, Ph.D.

HONORARY BOARD MEMBERS

Virginia Dykes, Gary W. Grubbs,
John & Bonnie Strauss

ADMINISTRATION

ACTING ARTISTIC DIRECTOR Bruce R. Coleman

MANAGEMENT CONSULTANT Marty Van Kleeck

ACTING GENERAL MANAGER Linda Harris

COMPANY MANAGER Kat Edwards

IT MANAGER Nick Rushing

CPA Ron King

HOUSEKEEPING Kevin Spurrier

PRODUCTION

TECHNICAL DIRECTOR Sydnee Mowery

SCENIC PAINTER David Walsh

APPRENTICE STAFF

Michael Spencer, Jennifer Woodward,
Monika Zimmermann

CUSTOMER SERVICE

HOUSE MANAGER

Bill Sehnert

BOX OFFICE MANAGER

Pam Doherty

BOX OFFICE AGENTS

Tony Banda, Simone Clayton, Sally Cole,
Mason Kuhn, Bill Sehnert

Theatre Three has Hearing Assistance devices which may be checked out without charge from the box office. These devices enhance the performance experience for audience members with any degree of hearing limitation. The box office personnel can provide you with the devices either before the show or at intermission. Theatre Three's staff and board are most grateful to donors Carolyn Wickwire and Dennis West, who provided the grant that allows us to offer this enhancement to our patrons.



ON OTHER STAGES

CASA MANANA

SEPT 26 - OCT 4 *Fiddler on the Roof*

CIRCLE THEATRE

AUG 20 - SEPT 19 *Lovers and Executioners*

CONTEMPORARY THEATRE OF DALLAS

SEPT 4 - 27 *Catholic School Girls*

DALLAS CHILDREN'S THEATER

SEPT 18 - OCT 25 *Fancy Nancy: The Musical*
OCT 16 - 25 *The Ghosts of Sleepy Hollow*

DALLAS THEATER CENTER

SEPT 2 - OCT 11 *Moonshine: That Hee Haw Musical*
SEPT 16 - NOV 15 *The Mountaintop*

GREATER LEWISVILLE COMMUNITY THEATRE

SEPT 25 - OCT 18 *Evita*

JUBILEE THEATRE

OCT 2 - NOV 1 *Lady Day at Emerson's Bar & Grill*

KITCHEN DOG THEATER

SEPT 11 - OCT 10 *The Dumb Waiter*

LYRIC STAGE

SEPT 4 - 13 *Into the Woods*

OHLOOK PERFORMING ARTS CENTER

OCT 2 - 11 *Dula!*

ONSTAGE IN BEDFORD

OCT 2 - OCT 25 *Company*

POCKET SANDWICH THEATRE

AUG 28 - SEPT 26 *Bride of Frankenstein: The Musical*
OCT 2 - NOV 14 *Jack the Ripper: Monster of Whitechapel*

STAGE WEST

AUG 6 - SEPT 13 *Mr. Burns, A Post-Electric Play*

THEATRE ARLINGTON

SEPT 11 - OCT 4 *Hello, Dolly!*

UNDERMAIN THEATER

SEPT 23 - OCT 17 *The Droll (Or, a Stage Play About the END of Theatre)*

UPTOWN PLAYERS

AUG 28 - SEPT 13 *Hedwig and the Angry Inch*



Cotton Patch Gospel

Story by Tom Key and Russell Treyz, Music and Lyrics by Harry Chapin

Produced by special arrangement with Dramatic Publishing.

THEATRE TOO AT THEATRE THREE

ARTISTIC STAFF

DIRECTOR

BJ Cleveland

MUSIC DIRECTOR

Mark Mullino

SET DESIGN

Sydnee Mowery

LIGHTING DESIGN

Mark C. Guerra

COSTUME DESIGN

Bruce Richard Coleman

PROPERTIES MASTER

Monika Zimmermann

PRODUCTION STAFF

AEA STAGE MANAGER

***Sally Soldo**

PRODUCTION ASSISTANT

Monika Zimmermann

TECHNICAL DIRECTOR

Sydnee Mowery

SCENIC PAINTER

David Walsh

PRODUCTION CREW

Sydnee Mowery, Michael Spencer,

Jennifer Woodward,

Monika Zimmermann

CAST

JESUS

***Joey Folsom**

MATTHEW

***Willy Welch**

ENSEMBLE

****Justin Duncan**

***Sonny Franks**

***Johnny Lee**

****Julie Mayer**

****Abigail Palmgren**

SETTING

Here and now.

SPECIAL THANKS

Toys R Us at Firewheel
Tarleton State University

There will be one 15 minute intermission
between Acts I & II.

Please silence your cell phones and all
electronic devices. No photography or
videography is allowed without the consent
of the theater.

* indicates members working under
Actors' Equity Association contracts in this
production.

** indicates a performer enrolled in the
AEA membership candidate program.



PICTURED LEFT TO RIGHT:
Willy Welch, Joey Folsom,
Sonny Franks

About the Playwrights

Tom Key CO-AUTHOR

A dedicated actor and director out of Atlanta, Tom Key has appeared in over 100 productions from off Broadway to Los Angeles, including his solo dramatization *C.S. Lewis On Stage*. He has received The Governor's Award in the Humanities, the Georgia Arts and Entertainment Legacy Award, and two Dramalogue Awards for Outstanding Contribution to the Theater.

Russell Treyz CO-AUTHOR

Educated at Princeton University and the Yale School of Drama, Treyz won the Drama Desk Award in 1972 for his play *Whitsuntide*. He has acted as Artistic Director and Head of Drama for several professional and university theaters across the county.

Harry Chapin MUSIC AND LYRICS

An American singer-songwriter and humanitarian, best known for his folk songs, including the 1974 hit "Cat's in the Cradle." He collaborated with Key and Treyz to write music and lyrics for *Cotton Patch Gospel* shortly before his death in 1981. The original cast soundtrack was produced by his brother Tom, and released in 1982.

Artistic Staff & Cast Biographies

B.J. Cleveland DIRECTOR

returns as director after staging this spring's hit comedy *The Liar*.

B.J. spent 8 months in Theatre Too last year as the hilarious Tony Whitcomb in *Shear Madness*, and has also been seen in T3's productions of *25th Annual Putnam County Spelling Bee*, *MidLife: The Crisis Musical*, and *Bedroom Farce*. He just directed the musical *Curtains* at the Irving Arts Center, and next moves on to direct another musical re-telling of the Gospel of Matthew—*Godspell*—for Contemporary Theatre of Dallas, before returning to Theatre Too to star in the one-man comedy *A Christmas Carol: The Radio Play* during our holiday season. B.J. is an award-winning actor and director, recognized by D Magazine, Dallas Observer, the Live Theatre League of Tarrant County, and the Dallas Theater Critics Forum for several awards, including a Lifetime Achievement Award (from the latter). He is an associate artist with Dallas Children's Theater, One Thirty Productions, Kids Who Care, Theatre Arlington, and Uptown Players—where he recently starred in the regional premiere of *The Nance*.

Mark Mullino MUSIC DIRECTOR has worked extensively throughout the Metroplex and the United States as a musical director and actor. Locally, Mark has directed/musical directed/conducted at Water Tower Theater, Dallas Theater Center, Uptown Players, Plano Repertory Theater, Lyric Stage, Labyrinth Theater, Collin Theater Center, Flower Mound Performing Arts Theater, PFamily Arts, Our Productions,

and Theater Arlington. Mark Has received numerous Column Awards and Leon Rabin Awards and nominations. In addition to musical directing and acting, Mark plays piano for the weekly Cabaret show "Mama's Party", teaches musical theater at KD College and Collin College, maintains a private studio, and is an artist. Mark is the President and co-founder of Dallas Young Artists. Mark received his Bachelors in Music from Hardin-Simmons University.

Sydnee Mowery SET DESIGN

is delighted to be making her debut as a designer with Theatre Three. She has been on staff as the technical director since March 2015, after moving from Austin with her husband, Gray Mowery. In Austin, she was the technical director at the Boyd Vance Theater at the George Washington Carver Museum where she also designed *Beauty and the Beast* and *Anything Goes*. She graduated from Tarleton State University with a BFA in technical theatre. In her free time she plays roller derby for the Dallas Derby Devils. She would like to thank the staff at Theatre Three for taking a chance on this young professional.

Mark C. Guerra LIGHTING DESIGN

is excited to be back home at Theatre Three. He was a former Intern and Intern Supervisor for Theatre Three from 2006 to 2009. Mark is the co-founder of Theatre Three's Musical Theatre Academy with Lynn Ambrose.

THIS SHOW IS MADE POSSIBLE BY...

Theatre Three is supported by its Board of Directors, by subscribers, by funds from the City of Dallas Office of Cultural Affairs, The Texas Commission on the Arts, and The Shubert Foundation and TACA. Special in-kind support for Theatre Three's website is provided by QuickSilver Interactive. Dr. Delphinium is Theatre Three's florist. A major contribution from the estate of Marlene Webb, a longtime subscriber, has established the Theatre Three Endowment Fund in support of the building and its equipment.

Mark has directed/acted/designed for various D/FW theaters including Imagination Players, Rover Dramawerks, C.A.T.S. in Arlington, Mesquite Community Theater, Richardson Theatre Centre, Shakespeare Dallas, Contemporary Theatre of Dallas, RISK Theatre Initiative, Nouveau 47 and the F.I.T. & Out of the Loop Festivals. When he's not doing professional theatre, Mark is busy molding the theatre minds of the youth of Lakehill Preparatory School in Lakewood.

Bruce Richard Coleman

COSTUME DESIGN

has designed many shows in Theatre Too. Among his favorites are *Seasons Greetings*, *Superior Donuts*, *Duets*, *Woody Guthrie's American Song*, and *Look What's Happened To Pixie De Costa*. Bruce has also designed the costumes for The Junior Players Summer Shakespeare Production for the last nine years. Bruce has also designed for ICT MainStage, The Pocket Sandwich Theatre, and Uptown Players. Bruce is Acting Artistic Director for Theatre Three

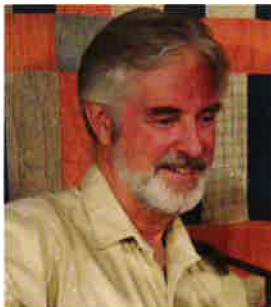


Joey Folsom

JESUS

Joey makes his Theatre Three debut with *Cotton Patch Gospel*! Trained by Terry Martin at WaterTower Theatre, Mr. Folsom has been seen on WaterTower's stage, as well as at Upstart Theatre, Kitchen Dog Theater, Churchmouse Productions, and Artes de la Rosa. Select credits include *Year of the Rooster* (Odysseus Rex), *Hank Williams: Lost Highway* (Hank Williams), *Our Town* (George), and *Jesus Hates Me* (George), as well as feature films

Cronus, *Arc*, and *Once is Enough*. He was named D Magazine's "Best Actor" in 2014.



Willy Welch

MATTHEW

Mr. Welch returns to the Theatre Three stage after his last appearances in *A Civil War Christmas* (ensemble) and *Woody Guthrie's American Song* (Woody). A graduate of Boston University College of Arts, Mr. Welch has been seen on several other metroplex stages, including the Dallas Theater Center, WaterTower Theatre, Casa Mañana, Circle Theatre, and Contemporary Theatre of Dallas. Other select credits include the national tour of *Flipside: The Patti Page Story* (Daddy), New Harmony Theatre's production of *Cotton Patch Gospel*, the national tour of *Jim Thorpe Story* (Frank Welch), and Boston Arts Group's *The Marlowe Show* (Christopher). Mr. Welch is also a singer/songwriter and children's performer under the name "Mr. Willy". He makes his home in Dallas with fellow T3 vets Wendy and Molly, his wife and daughter



Justin Duncan

ENSEMBLE

Justin is thrilled to be making his Theatre Three debut! He has just returned back to Dallas after

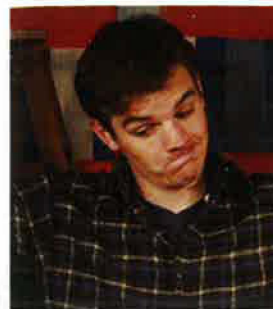
touring with Dallas Children's Theater in *Stuart Little* (2013-14) and *The Musical Adventures of Flat Stanley* (2014-15). He has worked at several other theaters in the Metroplex including Upstart Productions, Shakespeare Dallas, Uptown Players, Garland Summer Musicals, and Casa Mañana. He also serves as the intern associate for Core Talent. Thanks to B.J. and Mark for the opportunity to share this story with this incredible cast and crew. Much love to Joey (*The Aliens*) and Johnny (...*Flat Stanley*) as he shares this second show with his brothers. "The Lord is my shepherd; I shall not want." Psalms 23:1. I love you, Jad!



Sonny Franks

ENSEMBLE

returns to Theatre Three after the world premiere of *The Kountry Girls*, for which he both wrote and acted. Although Mr. Franks is no stranger to Dallas/Ft. Worth theatre audiences—having appeared in shows at Lyric Stage, Casa Mañana, WaterTower Theatre, and Dallas Theatre Center—his association with Jac Alder, Terry Dobson, and the rest of the Theatre Three family is a special one. It began many years ago with *A Little Night Music*, in which he shared the stage with the late Norma Young, and continues to be a part of many wonderful productions at Theatre Three, including *The Frogs*; *Myths and Hymns*; *I Love You, You're Perfect, Now Change*; *A Catered Affair*; *Wild Party*; *Pump Boys and Dinettes*; *Ballgames*; *Sideshow*; and *Amy's View*.



Johnny Lee

ENSEMBLE

Fresh off the National Tour of *The Musical Adventures of Flat Stanley* (Stanley), Johnny is thrilled to join the cast of *Cotton Patch Gospel* and make his Theater Three debut. Recent regional credits include: Lyric Stage's *The Human Comedy* (Homer Macauley), *Titanic* (Fredrick Fleet), *The Sound of Music* (Rolf) and The Dallas Children's Theater's *Charlotte's Web* (Wilbur). To keep up with and see more of Johnny's work, visit his website at www.johnnylee.me.



Julie Mayer

ENSEMBLE

Ms. Mayer joins us once more after her Theatre Three debut in 2012's *Crazy For You*! Trained at KD Conservatory and Collin College, Julie boasts credits at Garland Summer Musicals, Uptown Players, PFamily Arts, and Casa Mañana. Favorite credits include *Rapunzel* (Rapunzel), *Junie B. Jones* (Junie), and *Junie B. Jones: Jingle Bells*, *Batman Smells* (Lucille). She gives thanks for her supporting parents, and her best friend and roommate, Rebecca.



Abigail Palmgren

ENSEMBLE

Ms. Palmgren is thrilled to be making her Theatre Three debut and is honored to be working in the ensemble with such a wonderful cast and crew. A graduate of KD Conservatory College of Film and Dramatic Arts with a degree in Musical Theater Performance, Abigail has appeared in productions for MainStreet Musicals, BlackBox Productions, PFamily Arts, and The Stolen Shakespeare Guild. Most recently, she made her second appearance at MainStage Irving-Las Colinas. Film work includes *Beyond the Farthest Star*. Abigail is Texas native, with roots in Lubbock and Dallas. She is thankful for the support from her friends and family, including two dachshunds and her precious Chihuahua rescue, Bellie.

OUR LEGACY

Norma Young CO-FOUNDER & ARTISTIC DIRECTOR



For the theatre's 50th Anniversary in 2011, Theatre Three's main stage was named the NORMA YOUNG ARENA STAGE in honor of the theatre's founding artistic director. Ms. Young, a Dallas native, served the theatre as director,

leading actress, and administrator from the theatre's founding in 1961 until her death in 1998. Theatre Three thrives on her legacy of artistic and intellectual vigor, her wisdom and her continuous quest for the perfect synthesis of authors, actors and audiences.

This playbill is a publication of Theatre Three, Inc. in support of *Cotton Patch Gospel* (the second show of the 2015-2016 season) in Theatre Too at Theatre Three.

Playbill Design: David W. Radabaugh Photography: Lois Leftwich
Illustrations: Madeleine Morris Layout and Editor: Madeleine Morris
Front Cover, clockwise from left: Julie Mayer, Johnny Lee, Abigail Palmgren, Joey Folsom. Photo by Lois Leftwich.

Jac Alder CO-FOUNDER & EXECUTIVE PRODUCER



For 54 years, Jac Alder was a recognized, admired and beloved leader in the Dallas arts community. He (along with his wife, Norma Young) not only co-founded Theatre Three, the only theatre in the round in North Texas,

but he also took an active and passionate role in creating and maintaining what he called a "healthy arts ecology". Jac served as the longest reigning Artistic Director of any theatre in America, as well as on many boards and councils over the years. He participated in the creation of many Arts Organizations and nurtured artists at every level of their experience. The three tenants of Theatre Three — artist, author, and audience — were near and dear to Jac's heart. Please join us while we continue supporting his vision as we move forward into the future.

THE ANNUAL FUND

Dear Playgoer,

As you are very probably aware, Theatre Three has been undergoing a lot of change lately. Some would say a massive shift. I myself might say a life altering jolt.

Our beloved and respected co-founder, artistic director and executive producer Jac Alder passed away in May. This devastating event was preceded by the passing of the incomparable Terry Dobson, Theatre Three's company manager and musical director extraordinaire. Surely here are two mighty blows that would bring a lesser organization to its knees. But Jac Alder was a brilliant man and created a succession plan that would see to it that the theatre would live on. He left a handful of people in place who know T3, who understand T3 and, most importantly, who LOVE T3.

Those of us on staff are dedicating ourselves to moving Theatre Three into the future. We believed in Jac's vision then. We believe in it now. And as he said to us so many times, we are "looking to the horizon."

The Annual Fund originally went by a different name—The Phoenix Fund. Theatre Three, at the time of its creation, was badly in need of a little resurrection. Through incredibly generous gifts from subscribers and many lifelong friends of the theatre, the Phoenix rose from the ashes to soar another day. Now, many years later, and with so many challenges facing us daily, we need your help more than ever.

Please consider giving to our Annual Fund. Your generous donation may go to help pay a local artist, or buy a costume, or paint a set. Most assuredly, your gift will see to it that Jac's vision continues, onward and upward, into the future.

Sincerely,
Bruce Coleman
ACTING ARTISTIC DIRECTOR

A Message from Theatre Three's Board of Directors

For 54 years, Jac Alder was a leading advocate for the arts in North Texas, cultivating artists, audiences and authors while nurturing the theatre that he co-founded in 1961 - Theatre Three. As any patron of Theatre Three can tell you, Jac was passionate about the theatre. And out of that passion came Jac's great hope that Theatre Three was bigger than just one man, and that the theatre would continue on long after he exited the stage. In honor of Jac and his vision, The Board of Directors of Theatre Three has established the Jac Alder Memorial Fund, which will be used to secure the future of Theatre Three and Jac's legacy. Please consider using the attached donor form and indicate where you would like your donation to go. Many thanks!

YES! YES! YES!

Yes, I want to support Theatre Three's Annual Fund! Check your donation level below:

☐ SEASON SUSTAINERS
Gifts of \$10,000 - \$25,000

☐ PRODUCER'S CIRCLE
Gifts of \$1,000 - \$9,999

☐ LEADING PLAYERS
Gifts of \$500 - \$999

☐ SUPPORTING PLAYERS
Gifts of \$250 - \$499

☐ BACKSTAGE BENEFACTORS
Gifts of \$125 - \$249

☐ FRIENDS
Gifts of \$50 - \$124

☐ JAC ALDER MEMORIAL FUND
Gifts of the Heart

DONOR INFORMATION

name _____
address _____
city _____
state _____ zip code _____
e-mail _____
patron number (if known) _____

name (as you wish it to appear in the program)
☐ or check here to remain anonymous

PAYMENT INFORMATION

\$ _____
total contribution _____
☐ My check is enclosed for the full amount or
I wish to charge my donation to:
☐ Visa ☐ Discover ☐ MC ☐ AMEX

credit card number _____
expiration date _____
CVV code _____

Bring or mail to:
Theatre Three, Inc.
2800 Routh Street, Suite 168
Dallas, Texas 75201

Donate online:
www.theatre3dallas.com

THE DRAMA CLUB PRESENTS ITS WORLD PREMIERE ADAPTATION OF

FAUST

OCT 8 TO 24, THURS-SUN, 8PM
BRYANT HALL, 3636 TURTLE CREEK BLVD.
VISIT THEDRAMACLUB.ORG FOR TICKET INFO.

THE ANNUAL FUND

Thank you to all of our patrons who generously made contributions to Theatre Three. This list of donors also includes patrons who gave when they subscribed to Theatre Three's 2015-2016 season. If you would like to make a donation to the Annual Fund, please fill out and return the form included in this playbill.

THEATRE ANGELS **\$10,000 and above**

Mr. Jac Alder
Mrs. Janet Spencer Shaw

PRODUCER'S **CIRCLE** **\$1000 - \$9,999**

Dr. & Mrs. Kenneth Altshuler
Lawrence & Elizabeth Barron
Mr. James Lee Blackwell
Mr. Bill Bond
KEMB
Dianne & Marion Broquette
Mason Brown Family
Foundation
Kathleen Cunningham & Randy Willis
Hannah & Stuart Cutshall
Dallas All Sports Association
(Gen. Coun.)
Dallas Summer Musicals
Brig. Gen. H. J. Dalton, Jr.
Dean Corbitt & Fred Penn
Dede Duson
Laura V. Estrada
Larry & Diane M. Finstrom
Ms. Pauline Graiver
Stan Graner & Jim McBride
James & Gayle Halperin
Ms. Sally Hansen
Harry S. Moss Foundation
Melinda Hartnett & Chris Ellis
John & Meg Haug
Ms. Emily Jefferson
Mr. & Mrs. David G. Luther Jr.
Dr. Jere H. Mitchell
George & Nesha Morey
Navias Family Foundation
Ms. Elya Naxon
Susan E. Barkley
Jan Nimmo in memory of Dan Nimmo
Robert Olson
Margot B. Perot
Jason Powell
Wm W. Richardson
Paul & Joan Ridley
Ms. Dana W. Rigg
Joe and Mary Ring
Ms. Elizabeth Rivera
Deedie & Rusty Rose
Eileen and Harvey Rosenblum
The Rosewood Corporation
Enika Schulze
Lorraine Sear and John McCafferty
Jerry Settiff & Joya Elinson
Shakespeare Festival of Dallas
Don & Norma Stone
Deborah & Craig Sutton
Victoria & Jack Tutterow
Dan Van Pelt
Weathers Family Charitable
Fund of CFT
Charlie & Laura Weems
Martha & Max Wells

SUPPORTING **PLAYERS** **\$250 - \$499**

Mr. & Mrs. David Allred, III
Ralph & Jo Blackburn
Cathy Ann Fears & Mark Blaquiere
Ms. & Mrs. Gregory K. Boydston
Mr. & Mrs. Robert Boyer
Robert & Patricia C Brooks
Kay & Elliot Cattarulla
Kay Champagne
Betty and Tom Cox
Cynthia Cummings
Michael L. Dailey
The Dallas Foundation
Mr. John S. Davies
Carol Jablonski & Michael Dill
District 13 Council Woman
Mr. & Mrs. Robert J. Downs
James & Kathryn Erickson
Mary & Bob Fleming
Colleen Flickinger
In memory of Alpha A. Fowler
Lisa Fox
Lynn Frank
Shannon H. Frink
Gary & Edith Fritzsche
Mrs. H. Matthews Garland
Pat Gentry
W. John Glancy
Philip & Gloria Gray
In honor of Jac Alder and in
memory of Norma Young Larry
& Christie Harrison
Mr. & Mrs. Jack W. Hawkins
Chris & Paul Hendricks
Christiane Hepfer
Mr. & Mrs. Shelton G. Hopkins
Mary Anne Ingram & Jim Schachterle

LEADING PLAYERS **\$500 - \$999**

Ida Jane & Doug Bailey
Dr. Bob & Donna Beavers
John P. Bell, Jr.
Dr. Jo Ellen Bogert
Suzanne Burkhead
Rita Cavanaugh
Mr. Raymond J. Clark
Communities Foundation

Sue & Phil John
Betty & Tommy Keith
Caryl Keys
Milton & Ann Killen
Carol & George Kondos
Steve Krant
Peggy Ladenberger, Ph.D.
Ms. Judy Lawhorn
Belinda & Felix Lozano III
Maguire Oil Company
Ed Maier
David & Wilma Milne
Scot & Eileen Milvenan
Mal & Linda Noone
Mr. Thomas J. Okeefe
Ms. Linda Palston
Mr. Joseph M. Revesz
Dr. & Mrs. Murray Rice
Catherine Ritchie
Jules & Hazel Schoenberg
Jim & Marilyn Schwartz
Brooks & Vicki Shafer
Gary & Genie Short
Mr. & Mrs. Robert S. Sloan
Mr. & Mrs. Brandon Spear
Renee Stanley
Susan Swan Smith
Robert and Lynne Thompson
Ms. Linda Harris & Marty van Kleeck
Carolyn Wickwire & Dennis West

BACKSTAGE **BENEFACTORS** **\$125 - \$249**

David G. Adler
Barbara Alexander
Anonymous Donations
Charles & Janie Barnhardt
Richard Baxter
Rosanne Bell
Ms. Emily Beyette
James & Diana Bigner
Frances Blatt & Gene Raboy
Pat & Nora Burns
Martha Ann Cates
Mr. & Mrs. Cleveland Clinton
D. Scott Cooper
Carol L. Croy
Claudia Davis
Jerry & Ruth Davis
In memory of Gene E. Diskey
Mrs. Janet A. Domaracki
Ruth Duff
John Edstrom
John & Haryette Ehrhardt
Tim & Patricia Elliott
Richard L. & Kay Fleming
Founder of TITUS
James & Sherry Friedberg
Ms. Jane Gaines
Ms. Lucare Hamby
Mark & Lynda Hamilton
Dr. & Mrs. Rickey & Julie Hargrave
John & Sandi Hebley
Robert & Barbara Herbison
Dr. Mona H. Hersh-Cochran
Dr. & Mrs. Charles Lloyd Hughes
John Humphrey MD
Ms. Carolyn Kacena
Betty Keefe
Ms. Bonnie Krauss
Anna Kuznetsova
Carol Ann & Dan Luby
In Memory of Sydney Lynn
Bob & Patsy Magruder
Bill & Peg Marrin

Kay King Martin
Michael & Janine Mason
Ms. Frances McGlinn
Victoria & Hunter McGrath
Paul & Claire McLin
Nancy & Joe Moore
Sheila Moore
Kip & Delynda Kipton Moravec
Ed & Josephine Morton
Georgeann & King Moss II
Diana Muckleroy
Judy & George Nassif
Gregg & Debbie Nieman
Bill Pervin & Susan Chizeck
Larry & Carol Peters
Mary Peterberg
QuickSilver Interactive Group
Dr. W. Paul Radman
Mr. & Mrs. Richard A. Reed
Lynne Richardson
Dr. Albert Roberts
Elliott & Phyllis Ross
Mr. & Mrs. Warren L. Rubin
Ms. Elfriede Russell
Mr. Glenn Samford
Hal & Mary Jo Schneider
Patricia L. Shaugnessy
Ms. Katie Frank Slack
Elaine Smith
Evelyn R. Smith
Pat Stodghill
Bonnie Stoner
Dr. Joan M. Tamez
John & Marilyn Tolle
Ms. Eleanor Trachtenberg
Leland Turner
Tyler & Mary Veasey
Mrs. Helen C Walker
Thomas E. & Charlotte Walker
Hal & Carolyn Warnick
Ms. Teresa Coleman Wash
In memory of June Webb
Ralph O. Weber
Z. & Shirley Zschar

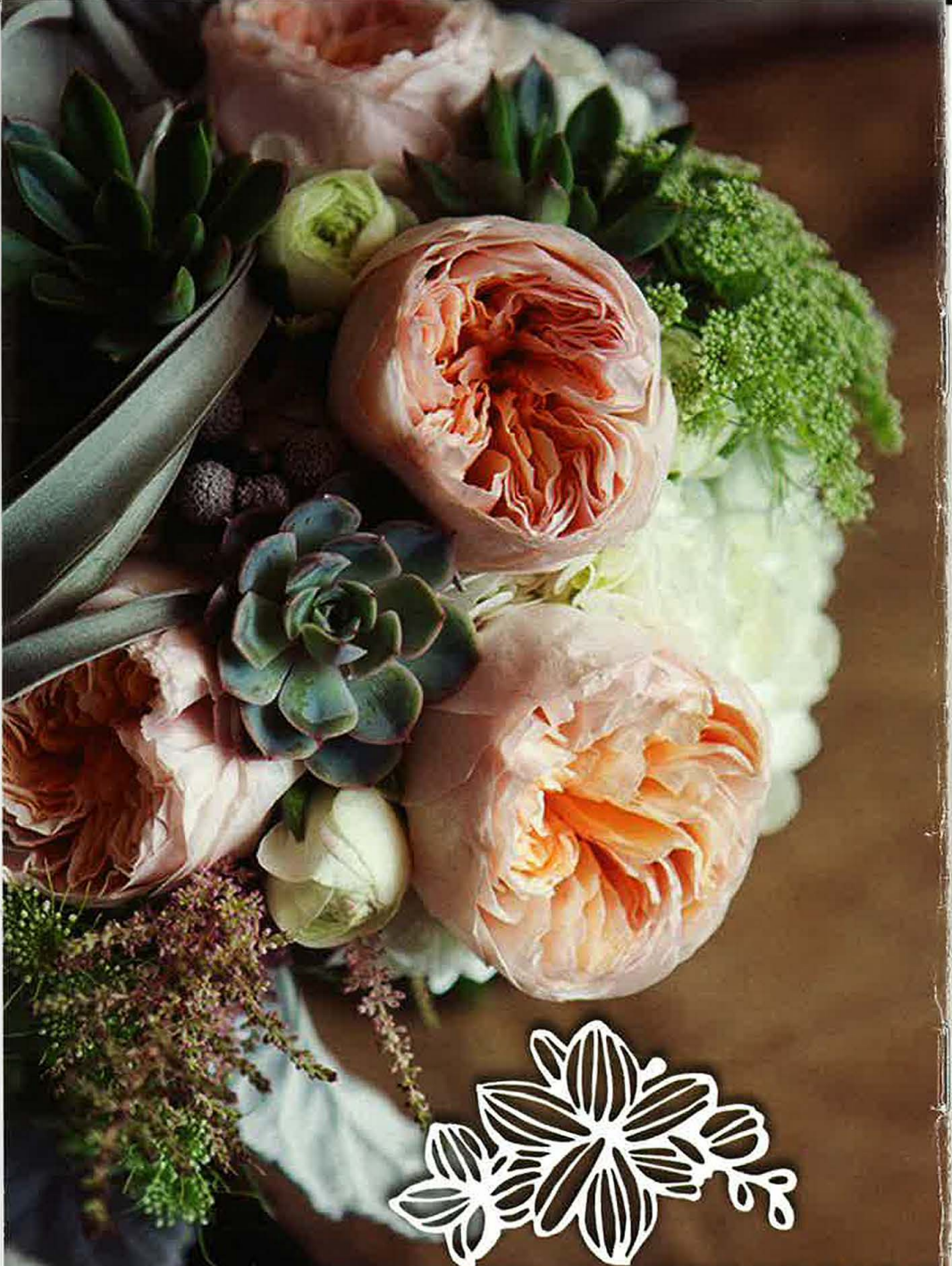
FRIENDS **\$50 - \$124**

Rae Allen & Claudine Sherrill
Steve Alsedek
Al & Jill Anderson Jr.
Anonymous
Charles & Susan Arnett
Mr. Greg G. Atkins
Ms. Janet Aune
Ms. Sally Austin
Ms. Maribeth Ayers
Mr. Curtis Bagley
Steve & Mary Baker
Ms. Bettye C. Barnes
Karen Beebe
Ms. Sheri Beemer
Dr. & Mrs. Steven A. Bell
Ms. Taunee S. Besson
Henry & Annie Bivins
Julie Blackwell
Ms. Linda Blase
Mr. Eric Bonney
Annette Boswell
Alison Botts
Dan Bourland
Charles & Diana Briner
Kevin Buehler & Jaime Chambron
Ted & Carol Bywaters
Randall Callison
Judith Calvert
Robert & Ruth Ann Cameron
H.E. & Carol Canada
Tim & Susan Carnell
Mary Cave
Mark Chambless

Mr. & Mrs. Davis Chauviere
Doris Cheshier
Kim Cheshier
Mr. & Mrs. Robert Claycombe
Camille Cole
Mr. Bruce R. Coleman
Lee Ann Collins
Mr. David R. Copeland
Tom Cornell
Julie Crawford
Mr. & Mrs. John Cross
William & Juaniza Cross
Mr. Jerry Crow
Ms. Lee B. Cullum
Ms. April Davis
Mary E. Davis
Amon & Pauline Denur
Ron & Cynthia Davies
Ms. Amber Devlin
Richard & Chris Dodge
Mr. Chuck Donaldson
Don & Barbara Dowling
Ms. Ida Lee Downs
Gary & Jo Anne Duncan
Robert & Carol Eberhart
Lee & Paula Ellbott
Eileen and Harvey Rosenblum
Laurie Suomala & John Elfers
Mr. & Mrs. Ross Farnsworth
Boyce & Pat Farrar
Mr. & Mrs. Hugh F. Feagin
Mr. Gerald Finaldi
Rick Croley & Ann Fiorelli
Dorothy E. Fischer
Jim & Ann Fleming
Barbara & Ed Foreman
Mr. Greg Forshay
Douglas & Jill Foster
Dawn Fowler
Bettie D. Francis
Ms. Chrystine Franklin
Pat & Claude Frazier
Danna Gann
Catalina Garcia & Rollin F Gary
Ray Gestaut
Mark & Era Gilbert
Doug & Linda Gilpin
Mike & Sandra Gist
Eileen Goldstein
Harvey Gollman
Donald & Lynn Graham
Sheryl Granger
Shirley Ann Grannan
Jack & Lana Greeley
Bobby & Judith Greenwood
Mr. Fred Grinnell
Bob & Janet Hadeler
Patrick & Sandra Haigh
Linda Hale
Mr. Alex Hamerman
Gerald & Francis Hare
Edgar Harp
Rita Harvey
Charles Michael & Collyn Hawn
Gregory Hawthorne
David & Cherry Haymes
Ms. Jean B. Hecht
Ruth Hendelman
Steve & Jodi Hendon
Morley & Cheryl Herbert
Ms. Charlotte Herr
Messrs. Doug Miller & Bob Hess
Lee & Mary Higdon
Mr. & Mrs. Michael Higgins
Ennis & Donna Hill
Dr. Pamela R. Hill
Arthur & Dixie Hollers
Judy Hollis
Charles & Julie Holman
John & Beverly E. Houston
Ms. Diane Hultquist
R. Nell & Joan Hutson
Rusty & Gayle Ingle
Mr. & Mrs. John Jagers
Howard & Marla Janico
Iris Johnson
Bill & Elaine Johnson
Mr. Parris Jones
Mr. & Mrs. A. R. Kampschafer
Ms. Ellen Kaner
Akriti Karki

Ms. Cindy Karm
Michael & Suzanne Kay
Betty E. Kelly
Charlotte Kelly
Genell O. & Mark Kelso
Douglas Klahr
Gail G. Klaveness
Marianne Kolar
Joyce and Howard Korn
Caryn Korshin
Lee & Kim Laird
Juris & Carolyn Laivins
John H. & Pam Lange Jr.
Dr. & Mrs. Ricky Lark
Jean Larson
Jack & Jo Ann Leavitt
Linda M. Lee & Jay Isham
Lois Leftwich
Mr. & Mrs. Larry Lester
Patty Lewis
Mrs. Susan Lichten
Ms. Elly Lindsay
Diane Litke
Carol Braden & Vera Locurto
Mr. Leroy Logan
Jim & Peggy Lubniewski
Dr. & Mrs. P.E. Luecke, Jr.
Gregory & Maryam Lush
Dr. Richard & Kay Mabry
Mr. & Mrs. William MacKnight
Ron Maddox
Ms. Sue Magness
Mrs. Jane Malone
Ms. Rebecca A. Martin
Dona Martinez
Bob & Phyllis Marwill
Barbara F. Materka
Betsy Matheson
Rev. & Mrs. William Matthews
C.R. McDaniel
Robert & Andrea McDaniel
Ms. Joan McDole
Ricardo McKay
Hilda S. McLaughlin
Ms. Shirley McLean
Mr. Gordon McMillan
Ms. Michelle Mendez
K. Messerschmitt
Leon Miller
Mrs. Sue Young Miller
Ms. Teresa K. Miller
Sean Mitchell
Mrs. Lajohn Molhusen
Ms. Loretta A. Monson
Nan Moser
Carolyn & Stewart Musket
Jane R. Myers
Erika & Joel Nannis
Liz Naughton
Pauline Neff
Jennifer Norris
Ms. Jennifer Noth
Fred & Estelle Odell
Mike & Faith O'Neill
Angie Parra
Ms. Carlene Peal-Sconce
Benjamin Pena
Dr. Frank Perez
Alice Anne Perry
Russell & Murphy Phillips
Jenny Pichanick
Ms. Danielle Pickard
Charles & Susan Ramirez
Pat Randolph
Ed Rast
Dr. & Mrs. Peter C. Ray
Bonnie Rea
Ms. Susan Elizabeth Read
Patricia Reed
Catherine Rich
David W. Ricker
Sam & Sharon Ricks
Mrs. Karen Robinson
Art & Cynthia A. Rogers
Marsha Y. Rosenberg
Mrs. Patricia Rowen
Nancy Rubin
John & Joysanna Rutledge
Scott & Andrea Rutledge
Jay & Jessie Sackler
Ellen Samuels

Ms. Betty Sarratt
James & Tracy Sellers
Jean Ann and Rudy Ray Seward
Carol A. Sewell
Ms. Nancy S. Shamblin
John W. Shannon
Mr. & Mrs. Gregory Shinn
Todd & Debbie Siddens
Betty & John Silander
Silicon Valley Community
Foundation
Mrs. Sylvia Silver
Bill & Brenda Sims
Les & Jan Sims
Robert Skeen
Chuck & Linda Smith
Neal & Jean E. Smith
Sharon Fay Snow
Jay Murter & Tomas Soto
Mr. & Mrs. Lee & Laura Spencer
Stephen & Susan Spencer
Jay Stankiewicz & Don Groves
Carolyn & Gene Stern
Ms. Freda Gail Stern
Vivian Annette Stewart
Gene & Marge Stockton
Mrs. Billie M. Stone
Eleanor & Marion Stone
James F. Strunc & Mary Anne Gentry-Strunc
Peggy Sullivan
Sean & Pamela Sullivan
Lawrence Sweeney
Anne Tabb
TACA
Edward Tann
Nita Mae Tannebaum
Ken Tapscott
Terri Taylor
Hon. Carter Thompson & Shirley Thompson
Toya Thompson
Mr. Bruce Toplek
Jo Tuck
Ms. Nancy Tuffin
Mr. & Mrs. Tom Tunks
Barbara S. Turner
UBS
Nancy & John van Ness
Verizon
Mr. John Viola
Mr. Christopher J. Wagley
Cynthia & Jim Waits
James F. & Barbara Wallis
Floyd & Nancy H. Watson
Dale Weathers
Rod & Grace Weiland
Paula A. Welch
Ms. Amanda West
Mr. Dale A. Wheeler
Mrs. Sara Whipple
Michael Wiethorn
J. Kenneth & Alayne Wilemon
Mr. Eric Willborn
Kathy Williams-Hunter
Clark & Jane Willingham
Mr. Richard Wills
Ellen Wilson M.D.
Ed & Ylva Wolfgang
Paul & Alison Wright
Ken & Anita Wrobel
Chris P. Xeros
Anne Zhang




DR DELPHINIUM
DESIGNS+EVENTS

5906 W. Lovers Lane Dallas, TX 75225 • 214.522.9911