



THEATRE 3
DALLAS

2015-16 SEASON

APR 28 - MAY 22, 2016



THEATRE 3

theatre3dallas.com



#t3memphis

WINNER! 2010 TONY AWARD - BEST MUSICAL

AM 55 60 70 80 100 120 140 160 kHz

MEMPHIS

THE MUSICAL

Book & Lyrics by **JOE DIPIETRO** | Music & Lyrics by **DAVID BRYAN**

Directed By **Bruce R. Coleman**

THEATRE 3

2015-2016 SEASON



THE GLASS MENAGERIE

by Tennessee Williams
July 30 - August 23, 2015



FIX ME, JESUS

by Helen Sneed
September 17 - October 11, 2015



PICNIC

by William Inge
October 29 - November 22



THE FANTASTICKS

by Tom Jones and Harvey Schmidt
December 3 - 27, 2015



OIL

by Neil Tucker
January 21 - February 14, 2016



LIGHT UP THE SKY

by Moss Hart
March 10 - April 3, 2016



MEMPHIS

by David Bryan and Joe DiPietro
April 28 - May 22, 2016

NOW SHOWING DOWNSTAIRS IN THEATRE TOO:

THE EMPRESS, THE LADY AND THE PEARL, PART ONE: THE EMPRESS AND THE PEARL

APRIL 7 - MAY 1 by diannetucker

STARRING DENISE LEE and MARISA DIOTALEVI.

MEMPHIS IS MADE POSSIBLE BY...

Theatre Three is supported by its Board of Directors, by subscribers, by funds from the City of Dallas Office of Cultural Affairs, The Texas Commission on the Arts, and The Shubert Foundation and TACA. Dr. Delphinium is Theatre Three's florist. A major contribution from the estate of Marlene Webb, a longtime subscriber, has established the Theatre Three Endowment Fund in support of the building and its equipment.



Office of Cultural Affairs
CITY OF DALLAS



TACA
Performing for the arts.



Texas
Commission
on the Arts



THE SHUBERT
FOUNDATION INC.

T3 PEOPLE

BOARD OF DIRECTORS

CHAIR Scott T. Williams

BOARD MEMBERS

Marion L. Brockette, Jr., Suzanne Burkhead,
Raymond J. Clark, Sid Curtis, Katherine C. Eberhardt,
Laura V. Estrada, Sally Hansen, David G. Luther, Jr.,
David M. May, Chris Rajczi, Margie J. Reese, Dana
W. Rigg, Elizabeth Rivera, Eileen Rosenblum, Ph.D.

HONORARY BOARD MEMBERS

Virginia Dykes, Gary W. Grubbs,
John & Bonnie Strauss

ADMINISTRATION

ACTING ARTISTIC DIRECTOR Bruce R. Coleman

MANAGING DIRECTOR Merri Brewer

BOOKKEEPER Linda Harris

COMPANYMANAGER Kat Edwards

PUBLICITY, MARKETING & DESIGN

SoloShoe Communications, LLC

CPA Ron King

HOUSEKEEPING Kevin Spurrier

PRODUCTION

TECHNICAL DIRECTOR John Ruegsegger

SCENIC PAINTER David Walsh

APPRENTICE STAFF

Michael Spencer, Monika Zimmermann

CUSTOMER SERVICE

BOX OFFICE MANAGER

Bill Sehnert

HOUSE MANAGER

Angelica Rollins

BOX OFFICE AGENTS

Tony Banda

Sally Cole

Simone Clayton

Emily Davenport

Fernando Hernandez

ON OTHER STAGES

ARTISAN CENTER THEATRE

APR 22 - JUN 4 *Bye Bye Birdie*

CIRCLE THEATRE

APR 22 - JUN 4 *Under the Skin*

DALLAS CHILDREN'S THEATRE

APR 28 - MAY 21 *The BFG (Big Friendly Giant)*

DALLAS THEATRE CENTER

APR 20 - MAY 14 *Deferred Action*

GARLAND CIVIC THEATRE

APR 14 - MAY 7 *Hank Williams: Lost Highway*

MAINSTAGE - IRVING • LAS COLINAS

MAY 13 - 28 *The Great Gatsby*

ONSTAGE IN BEDFORD

MAY 20 - JUN 5 *Kitchen Witches*

PEGASUS THEATRE

MAY 20 - 29 *A Trifle Dead!*

POCKET SANDWICH THEATRE

MAY 20 - JUN 18 *Moon Over Buffalo*

RICHARDSON THEATRE CENTER

MAY 13 - 29 *The Mousetrap*

ROVER DRAMAWERKS

MAY 5 - 14 *365 Women A Year Festival*

RUNWAY THEATRE

MAY 20 - JUN 12 *Spring Awakening*

THEATRE ARLINGTON

MAY 6 - 29 *My Way, A Tribute to Frank Sinatra*



Photo by Michael McCray

PICTURED: L-R: Babakayode Ipaye, Calvin Roberts,
Ebony Marshall-Oliver, Kyle Igneczi

Theatre Three has Hearing Assistance devices which may be checked out without charge from the box office. These devices enhance the performance experience for audience members with any degree of hearing limitation. The box office personnel can provide you with the devices either before the show or at intermission. Theatre Three's staff and board are most grateful to donors Carolyn Wickwire and Dennis West, who provided the grant that allows us to offer this enhancement to our patrons.





Memphis

by David Bryan and Joe DiPietro

THE NORMA YOUNG ARENA STAGE

ARTISTIC STAFF

DIRECTOR

Bruce R. Coleman

MUSICAL DIRECTOR

Pam Holcomb-Mclain

CHOREOGRAPHER

Kelly McCain

LIGHTING DESIGN

Amanda West

SOUND DESIGN

Kellen Voss

SCENIC DESIGN

Michelle Harvey

COSTUME DESIGN

Tory Padden

MASTER ELECTRICIAN

Max Marquez

CAST in Alphabetical Order

MR. COLLINS

Mikey Abrams

ENSEMBLE MAN

Billy Betsill

CLARA, ENSEMBLE

LisaAnne Haram

HUEY

***Kyle Igneczi**

BOBBY BIG LOVE

***Babakayode Ipaye**

FELICIA

***Ebony Marshall-Oliver**

GATOR

Darren McElroy

BUCK WILEY

****Ian Mead Moore**

DELRAY

***Calvin Roberts**

MAMA

Kristal Seid

ENSEMBLE

Monique Abry, Victoria Biro,

****Jeremy Coca, Brendon Gallagher,**

Christian Houston, **Jori Jackson,

****Quintin Jones, Nicholas Levingston,**

Kyle Montgomery, **Johanna Nchekwube,

****Abigail Palmgren, **Rashaun Sibley**

PRODUCTION STAFF

AEA STAGE MANAGER

***Kevin Scott Keating**

ASSISTANT STAGE MANAGER

***Connor John**

PRODUCTION ASSISTANT

Monika Zimmermann

TECHNICAL DIRECTOR

John Ruegsegger

SCENIC PAINTER

David Walsh

PRODUCTION CREW

Michael Spencer

BAND

PIANO / KEYBOARD

Pam Holcomb-Mclain

BASS

Peggy Honea

Lincoln Apeland

DRUMS

Randy Linberg

GUITAR

Brian Coleman

Russell Mirabelli

WINDS

Kristen Thompson

WIND SYNTHESIZER

Michael Dill

SETTING

In and around the city of Memphis during the decade of the 1950s

SPECIAL THANKS

Jason Lynch - Dallas Children's Theatre, Drew Wall - Second Thought Theatre, Chris Mount AT&T Performing Arts Center, Bart McGeehon, Baylor Theatre

There will one 15 minute intermission

Please silence your cell phones and all electronic devices. No photography or videography is allowed without the consent of the theater.

* indicates members working under Actors' Equity Association contracts in this production.

** indicates a performer enrolled in the AEA membership candidate program.

"Memphis" is presented through special arrangement with and all authorized performance materials are supplied by Theatrical Rights Worldwide (TRW)

570 Seventh Avenue, Suite 2100, New York, NY 10018
(866) 378-9758 www.theatricalrights.com

Memphis | Book and Lyrics by Joe DiPietro
Music and Lyrics by David Bryan
Based on a Concept by George W. George

NOW CASTING Talented Buyers & Sellers

PUTTING YOUR REAL ESTATE NEEDS IN
THE SPOTLIGHT FOR OVER 28 YEARS

PROUD SPONSORS OF THEATRE 3

KATHY HEWITT | STEVE HABGOOD



HEWITT HABGOOD
GROUP



DAVE PERRY-MILLER
REAL ESTATE

214-752-7070 | HEWITTHABGOOD.COM

THE QUADRANGLE
2828 ROUTH ST, SUITE 100
DALLAS, TX 75201



Memphis

by David Bryan and Joe DiPietro

About the Playwrights

Joe DiPietro won Tony Awards for Best Book and Best Score for *Memphis*, which was also awarded the 2010 Tony Award, Drama Desk Award and Outer Critics Circle Award for Best Musical. His other shows include *All Shook Up*; *I Love You, You're Perfect, Now Change* (the longest-running revue in Off-Broadway history); *The Toxic Avenger* and *The Thing About Men* (both winners of the Outer Critics Circle Award for Best Off-Broadway musical) and *Falling For Eve*. His plays include the much produced comedy *Over the River and Through the Woods*, *The Art of Murder* (Edgar Award, Best Mystery Play), *Creating Claire* and *The Last Romance*. He lives in Manhattan with his pug, Rocco.

David Bryan is a Grammy Award-winning keyboard player and founding member of Bon Jovi. Over the past 26 years the band has sold more than 130 million records and toured the world, playing to millions of people. Their recent Lost Highway Tour was the #1 grossing tour in the world. David and Joe DiPietro have also co-written the award-winning musical *The Toxic Avenger*, currently playing at New World Stages. David is a National Spokesperson for VH1's Save The Music Program. Much Loveto Lexi, Colton, Gabby, Lily and my family.

Artistic Staff & Cast Biographies

Bruce R. Coleman DIRECTOR
Bruce has been associated with Theatre Three for 30 years. He directed his first show on the

Norma Young Arena Stage at the ripe old age of 24 and he has directed and designed over one hundred plays and musicals for the theatre ever since. Some favorite past assignments include *The Liar*; *The Hot Mikado*; *By The Way, Meet Vera Stark*; *Assassins*; *City of Angels*; *Present Laughter*; *Superior Donuts*; *Bloody Bloody Andrew Jackson*; *Tales From Mount Olympus*; *Pippin*; and *Look What's Happened to Pixie De Costa*. Bruce has also directed for other local theatres including *The Nance* and *Equus* for Uptown players, *Our Town* and *The Secret Garden* for MainStage Irving-Las Colinas, and *The Apartment* Plays for Upstart Theatre. For the last nine summers, Bruce has also designed costumes for The Junior Players' summer Shakespeare production out at Samuell Grand Park. He has been recognized by the Dallas Critics Forum awards, The Leon Rabin Awards, The Dallas Observer Best Of... Issue, and The Column Awards for his contributions to local theatre. Bruce's costumes for *Trysts in Toledo* (written by Jac Alder) received a Dallas Critics Forum Award for outstanding design. Love you to the moon, Jac!

Pam Holcomb-McIn

MUSIC DIRECTOR / PIANIST

joined the Theatre Three family in 2007 as Assistant Music Director for *The Goodbye Girl*. Subsequent credits include *A Civil War Christmas*, *Bloody Bloody Andrew Jackson*, [title of show], *Wild Oats*, *Pippin*, *Midlife: the Crisis Musical*, *It's Only Life*, *The Light in the Piazza*, *Woody Guthrie's American Song*, five runs of *I Love You, You're Perfect, Now Change* and, most recently, *The Fantasticks*. Pam has also worked in several other area venues as music

director and accompanist, such as Dallas Children's Theatre, the JCC Performance Space, Theatre Britain, Mainstage Irving-Las Colinas, the Pocket Sandwich Theatre, and the Quadrangle's own Two Corks and a Bottle as a solo artist. Pam sends kudos to the cast, crew, musicians and production team and much gratitude in loving memory of Terry Dobson.

Kelly McCain

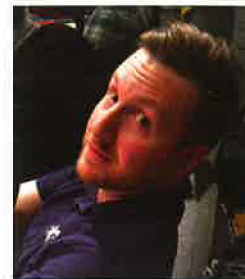
CHOREOGRAPHER
is so pumped to be a part of Memphis at Theatre Three. What incredible music! And what a cast! Other choreography credits include *Hot Mikado*, *Pippin*, and *Enron* (Theatre Three); *Creep*, *Bonnie and Clyde*, and *Putting It Together* (WaterTower Theatre); *Rudolph the Red-Nosed Reindeer* (Wishing Star Productions); *Peter Pan*, *9 to 5*, *Singin' in the Rain*, and *How to Succeed in Business* (Garland Summer Musicals); *The Nance* and *Breathe* (Uptown Players); *Curtains*, *Once Upon a Mattress*, *Sugar*, and *Shakespeare for the Modern Man* (Mainstage Irving-Las Colinas). Favorite performances have included "Tess" in *Crazy For You*, *The Drowsy Chaperone* (Theatre Three); *Carmen* (Dallas Opera); *The Boy From Oz*, *The Producers*, *Victor Victoria*, *Closer to Heaven*, *Dirty Rotten Scoundrels*, *Hair*, and *The Who's Tommy* (Uptown Players); *The King and I*, *Carousel*, *Hello Dolly*, and *Fiorello!* (Lyric Stage); *Best Little Whorehouse in Texas* (Contemporary Theatre of Dallas); *Oklahoma*, *42nd Street*, *Will Rogers Follies*, *Crazy For You*, *Mame*, *Hello Dolly*, *Guys and Dolls* (Garland Summer Musicals).

Amanda West LIGHTING DESIGN
is a freelance designer and Assoc.

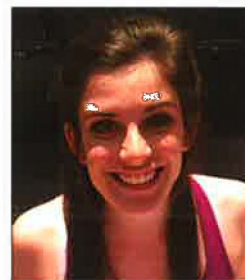
Director of Production at the AT&T Performing Arts Center in Dallas. Recent designs at Theatre Three include for *Oil*, *The Liar*, *Hands on a Hardbody*, and *On The Eve* at Theatre Three. Other recent work includes lighting & scenic designs for *Faust* with The Drama Club at Bryant Hall. Lighting designs for *Hedwig and the Angry Inch*, *The Boy From Oz*, and *Songs for a New World* at Uptown Players. Upcoming work includes *The Toxic Avenger Musical* at Uptown Players and *The Incident* with the Drama Club.

Michelle Harvery SCENIC DESIGN
(USA 829, MFA) is the resident scenic design faculty member for The University of Texas at Arlington's Department of Theatre Arts and Maverick Theatre Company. Her designs have been seen locally with Uptown Players (*Aida*, *Soho Cinders*), Theatre Three (*Picnic*), Mainstage Irving-Las Colinas (*Curtains*, *Musical Comedy Murders...*), and the Dallas Children's Theatre (*The BFG*) among others, and she regularly designs for the Turtle Creek Chorale and the Maverick Theatre Company. Michelle is the Commissioner for the Scene Design and Technology Commission of the United States Institute for Theatre Technology (USITT) and has served in this capacity for the past 5 years.

Tory Padden COSTUME DESIGN
has a Bachelor of Fine Arts from the University of Texas at Austin. Recent productions that she designed were *Gunfighter* for Northlake College, Theatre Britain's *Panto King Arthur* and *Curtains* for MainStage Irving-Las Colinas. She feels very fortunate to have the opportunity to work with this very talented Theatre Three team.



Mikey Abrams MR. COLLINS
Theatre Three debut! Mikey has performed in the DFW area for over 20 years. Some credits include shows at Uptown Players: *Kiss of the Spiderwoman* as Molina (Column Top Ten, DFW Critics Choice) and the World Premiere of *Re-Designing Women* as Bernice (East Coast Premiere and Off-Broadway Premiere). Other selected credits include Emcee in *Cabaret* (Column/Dooley Award-Best Actor in a Musical), and productions at Runway Theatre, Lyric Stage, Stage West, Turtle Creek Chorale, & Garland Summer Musicals. Mikey also moonlights as a Realtor with Texas Pride Realty. www.MikeyAbramsRealtor.com. Love to Scott, Chewy, Cookie, & Baby Doll.



Monique Abry ENSEMBLE
Monique is so happy to be returning to Theatre Three! She has performed across the country and locally with Casa Manana Theatre, WaterTower Theatre, Contemporary Theatre of Dallas, Dallas Children's Theater, Lyric Theatre of Oklahoma, and Wishing Star Productions. Some favorite credits include *Little Women: the Broadway Musical*

(Jo), *West Side Story* (Anita), *Sweet Charity* (Ursula), *Into The Woods* (Cinderella), and *The Wedding Singer* (Linda). She is a native of New Orleans, and received her BM in Music Theater from Oklahoma City University.



Billy Betsill ENSEMBLE MAN
Mr. Betsill is ecstatic to return to Theatre 3 with this stellar group of talented individuals. He was last seen on stage in *Light Up the Sky* here at Theatre 3, but has also performed locally with MainStage Irving-Las Colinas, Runway, ACT, FCT, Theatre Britain, Rover, Pocket Sandwich, Level Ground, Onstage and Pegasus Theatre. You may also catch him around DFW as the detective for *Keith & Margo's Murder Mystery* or making people laugh with his improv troupe, Comedy Sportz Dallas (comedysportzdallas.com). He would like to send a big SHOUT OUT to his family, friends, and spandex for all of their support!



Victoria Biro ENSEMBLE
is a junior at Booker T. Washington High School for the Performing and Visual Arts, where she trains with the Repertory Dance Company I. She has trained at

the Alonzo King Lines Ballet, Joffrey Ballet School, and Lyric Stage, performing in *Seussical the Musical*. She recently took part in Junior Players *FAME the Musical*. Victoria hopes to someday be on Broadway playing roles such as Glinda in *Wicked*, Elle in *Legally Blonde*, and Ado Annie in *Oklahoma!* This is her first production with Theatre Three and she is honored to be a part of the T3 family!



Brendon Gallagher ENSEMBLE
Brendon is very excited to be in his first production at Theater Three. Credits include *Too Many Girls*, *Desert Song*, *The Human Comedy*, *Titanic*, *The Golden Apple*, *The Grand Hotel*, *The New Moon* (Lyric Stage), *Le Nozze di Figaro* (Amalfi Coast Music Festival), *Little Women* (Brookhaven), *Falsettos* (Runway). Brendon studied percussion and voice at the University of North Texas.



LisaAnne Haram
CLARA, ENSEMBLE
LisaAnne was last seen on stage at Theatre 3 in *Picnic*. She also played Jenny in *Company*. Most recently she was seen at MainStage Irving-Las Colinas as Mrs. Edwards in *Kind Lady*, and Firehouse Theatre as Ouiser in *Steel Magnolias*. She toured with *Menopause the Musical* as Iowa Housewife in 2005. Other roles: Queen Aggravain/*Once Upon A Mattress*, Miss Strict/*Zombie Prom*, Jack's Mother/*Into the Woods*, and Pat Pilford/



Jeremy Coca ENSEMBLE
Jeremy is thrilled to be back at Theatre Three after being previously seen as a member of the ensemble in last year's production of *Hot Mikado*. Jeremy is a recent graduate from Booker T. Washington High School for the Performing and Visual Arts. His previous productions include a member of the ensemble in *Aida* at Uptown Players, *Grand Hotel* at Lyric Stage and *Fiddler on the Roof* at Casa Mañana. He'd like to thank his friends and family for all of their constant love and support and most of all to Will for simply being the best.

Red Scare on Sunset. Column Award winner, she retired from corporate life in 2003 and now is Education Coordinator for S.T.A.G.E. and part-time admin for a CPA. Thanks to those who support live theatre!



Christian Houston ENSEMBLE
Christian is honored to be making her debut at Theatre Three in Memphis! She is a former Dallas Mavericks Dancer and dance teacher who has choreographed various musicals in and around the Dallas area. Including, *Chicago*, *Hairspray* and *The Wiz*. Some of her favorite roles she has played include *Dorothy* (The Wiz), *Lorraine* (All Shook Up!) and *Carla* (In The Heights). She would like to thank her family and bestie Brandi for all of their continuous love and support!



Kyle Igneczi HUEY
spent last summer as Hedwig in *Hedwig and the Angry Inch* (Uptown Players – DFW Theatre Critics Forum Award, Best Actor). Other credits include *RENT* (Casa Mañana); *Aida*,

Catch Me If You Can (Uptown Players); *Dogfight*, *The Spark*, *Bonnie & Clyde* (WaterTower Theatre); *The Explorers Club* (Stage West / WaterTower Theatre); *West Side Story* (Garland Summer Musicals). Kyle is also a puppeteer, having designed and taught puppetry for productions including *Hershel and the Hanukkah Goblins* (Amphibian Stage Productions - Best Puppets 2015, TheaterJones). He will next be seen in Casa Mañana's *Spamalot*!



Babakayode Ipaye
BOBBY BIG LOVE
is thrilled to be making his T3 debut! Babs is a Theatre TCU Alum, who has worked all over the Metroplex, and the Country including the National tour of *Calculus: The Musical*, as well as being a former Resident Company Member at the Know Theatre of Cincinnati. You may recognize him from: Dallas Theatre Center, Casa Mañana, Lyric Stage, Jubilee Theatre, and Stage West among others. Some of his favorite roles include: Jackie Robinson, in *Jackie and Me*; Jake in *Sideshow*; and Munkestrap, in *Cats*! Babs would like to thank God, his family, and his close friends for their all of their care and support. All Love!



Jori Jackson ENSEMBLE
Making her T3 debut, Jori is proud to be apart of this awesome cast & crew. She is a Shreveport native, and a Northwestern State University of LA graduate with a BS in Musical Theater and Performance & Directing. While in her first year here in DFW area she has had the pleasure of appearing in *Jackie & Me*, *Fancy Nancy*, *Miracle on 34th Street*, *Aida* and *Where Earth Meets The Sky*, with The Dallas Children's Theater, Uptown Players and Cara Mia Theater Co. Jori is also a teaching artist with the Dallas Children's Theater and Junior Players and enjoys working with children of all ages! All thanks to God, family and friends for all of your support. I love you!!



Quintin Jones ENSEMBLE
is so excited to be making his Theatre 3 debut with this awesome production and incredible cast. A graduate of the University of Tulsa with a degree in Musical Theatre, he has had the privilege of performing in many theatres in the DFW

area. Most recently, he has been seen in: *Aida* at Uptown Players (d'ance ensemble), *West Side Story* at Rockwall Summer Musicals (Bernardo), *Pirates of Penzance* at RCT (Frederic), and *HAIR* at GLCT (Claude).



Nicholas Levingston ENSEMBLE
is very excited for his debut at Theatre Three! He was a performer at Six Flags Over Texas for 6 years in several different shows. He has also been seen in *Aida*, *Bare: A Pop Opera* and *West Side Story*. Nick has choreographed several shows such as *Hairspray*, *Beauty and the Beast*, *How to Succeed in Business Without Really Trying* and *The Drowsy Chaperone*. He would also like to thank his friends and family for their incredible support!

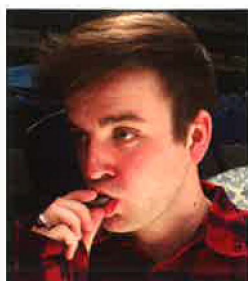


Ebony Marshall-Oliver FELICIA
Ebony is excited to be making her T3 debut! Regional credits include *The Color Purple*, *In Real Life*, *Ain't Misbehavin'*, *Neat*, *Pretty Fire*, to name a few. She's a graduate of the American Musical & Dramatic Academy

NY. She can be heard as the voice of the Sour Kangaroo on the original Off-Broadway cast recording of *Seussical*. All glory to God and a big thank you to my husband, son, and family for their support! Cast, let's shine!



Darren McElroy GATOR
This is his 4th production at Theatre Three. He was last seen as Mortimer in *The Fantasticks*. The other two shows he was part of on this stage were *Hot Mikado* and *A Civil War Christmas*. His other productions in the Dallas-Ft. Worth area include: *The Color Purple* (Jubilee Theatre), *The Wiz* (Garland Civic Theatre), *Dreamgirls* (GPAC), *Soul of Sam* (DVA Productions), *In The Heights* (ADLR), and the concert versions of *Ragtime* and *Sweeney Todd* (Uptown Players/ Turtle Creek Chorale). The Lord has blessed him with family and friends that strengthen and encourage his artistry so he can make it do what it do every time.

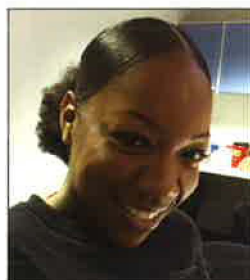


Kyle Montgomery ENSEMBLE
Theatre Three Debut! [As Actor] National Tours: *Rudolph The Red-Nosed Reindeer*; WaterTower Theatre: *Lord of the Flies*, *Creep*; Lyric Stage: *Into the Woods*, *South Pacific*, *The Human Comedy*; Uptown Players: *Catch Me If You Can*, *The Boy From Oz*, *Creep*, *Kiss of the Spider Woman*; Trinity Shakespeare Festival: *The Comedy of Errors*, *The Tempest*; Stage West: *Day Light*. [As Props Designer] WaterTower: *The Realistic Joneses*, *Venus in Fur* (Co-Production with Circle Theatre); Circle Theatre: *Lovers and Executioners*, *Other Desert Cities*, *Clever Little Lies*, *Under the Skin*. Proud TCU graduate. Love to family and friends!



Ian Mead Moore BUCK WILEY
is a local DFW actor, singer, and musician. He was seen last at T3 slapping the bass as Junior in *The Kountry Girls* and elsewhere with Uptown Players, Shakespeare Dallas,

Lyric Stage, and in the booth at FUNimation. He dabbles in composition for the theater, and arranges/accompanies on guitar for singers, along with teaching beginning/intermediate guitar. He sends his love to his family, his Lindsey, and his pibbles Alph and Ollie.



Johanna Nchekwube ENSEMBLE
A graduate of NYU's Tisch School of the Arts, Johanna is thrilled to be apart of the cast and crew of *Memphis the Musical* at Theatre Three. Her previous notable productions include *Nouveau 47* at Margo Jones Theatre, *Bride of Frankenstein* at Pocket Sandwich theatre, *Little Shop of Horrors* at Richland theatre, *In the Heights* and *Footfalls* at NYU. Her thanks goes to all who brought this courageous piece of Art together and she looks forward to working on her debut film opposite of Johnny Depp!



Abigail Palmgren ENSEMBLE
Ms. Palmgren is thrilled to be working at Theatre Three again with such a wonderful cast and crew. A graduate of KD Conservatory College of Film and Dramatic Arts with a degree in Musical Theater Performance, Abigail has appeared in productions for MainStreet Musicals, Blackbox Productions, PFamily Arts, and The Stolen Shakespeare Guild. Most recently Abigail was seen in *Cotton Patch Gospel* downstairs in Theatre Too. Film work includes *Beyond the Farthest Star*. She is thankful for the support from her friends and family, including two dachshunds and her precious Chihuahua rescue, Bellie. "Always."



Calvin Roberts DELRAY
Calvin is thrilled to return to the T3 stage! Some of Calvin's Regional credits include: *Benny, Rent*, (Casa Mañana); *Dr. Pierce, Miracle on 34th Street* (Dallas Children's Theater); *Ensemble, Creep* (WaterTower Theatre); *Mister, The Color Purple* (Jubilee Theatre); *CC White, Dreamgirls*

(Portland Center Stage); *Leroy/ Herb, By the way Meet Vera Stark* (Theatre Three); *Joe/The Folk, Spunk* (WaterTower Theatre); *Smokey Joe's Café* (WaterTower Theatre); *Thomas Hodge/ Honky* (WaterTower Theatre); *Moose/ Crazy For You* (Theatre Three); *Sabu/ The Producers* (Uptown Players); *King/ Mufaro's Beautiful Daughters* (DCT National Tour); *The Wiz* (DTC); *Willy/ Flora, the Red Menace* (Lyric Stage); *Ensemble/ Drowsy Chaperone* (Theatre Three); *Labourer/Undertakers Man/ A Christmas Carol* (Dallas Theater Center). Other theatrical credits include: *Salerio/ Merchant of Venice* and *Lucius/ Julius Caesar* (Shakespeare Dallas).



Kristal Seid MAMA
is thrilled to make her Theatre Three debut. She earned a BFA from Southwestern University and performed at regional theaters such as Casa Manana, Shakespeare Festival Dallas, Dallas Children's Theater, Paramount Theatre of Austin and Music Theatre of Wichita. She returned to theater last year in *Evita* at GLCT and *Mary Poppins* (Birdwoman/ Mrs. Brill) at The Firehouse Theatre after a 20 year hiatus, having spent the years helping her husband build successful IT and financial leadership companies. Kristal is blessed to be married to a wonderful man, who helps make all her dreams come true.
Rom 8:38-39



Rashaun Sibley ENSEMBLE
is so excited to be making his Theatre Three debut! Regional credits include: *Schoolhouse Rock Live!* (George) and *The Wizard of Oz* at Casa Mañana; *Rudolph the Red-Nosed Reindeer: The Musical* National Tour for Wishing Star Productions; *Fancy Nancy: The Musical* (Lionel) at Dallas Children's Theater; *The Rocky Horror Show* at Dallas Theater Center; *The Boy From Oz* (Trick/Ensemble) at Uptown Players; two seasons with Trinity Shakespeare Festival, and *In the Heights* (Sonny) at Artes De La Rosa. Rashaun received his BFA in Theatre with an emphasis in Musical Theatre from Texas Christian University (Go Frogs!). Shout outs to Jesus and his family and friends!

Bio photos by Monika Zimmermann

To learn more about this and upcoming productions, explore our full season on the web at www.theatre3dallas.com.

OUR LEGACY

Norma Young CO-FOUNDER & ARTISTIC DIRECTOR



For the theatre's 50th Anniversary in 2011, Theatre Three's main stage was named the NORMA YOUNG ARENA STAGE in honor of the theatre's founding artistic director. Ms. Young, a Dallas native, served the theatre as director,

leading actress, and administrator from the theatre's founding in 1961 until her death in 1998. Theatre Three thrives on her legacy of artistic and intellectual vigor, her wisdom and her continuous quest for the perfect synthesis of authors, actors and audiences.

This playbill is a publication of Theatre Three, Inc. in support of **Memphis** (the seventh show of Theatre Three's 2015-2016 season) on the Norma Young Arena Stage.

Playbill Design: SoloShoe Communications, LLC.
Illustrations: Joe Howard • Front Cover: Michael McCray

Jac Alder CO-FOUNDER & EXECUTIVE PRODUCER



For 54 years, Jac Alder was a recognized, admired and beloved leader in the Dallas arts community. He (along with his wife, Norma Young) not only co-founded Theatre Three, the only theatre in the round in North

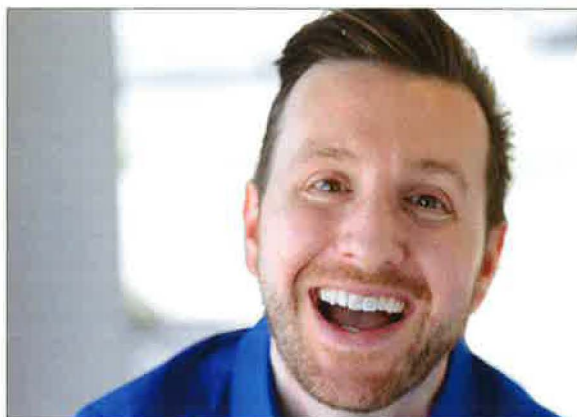
Texas, but he also took an active and passionate role in creating and maintaining what he called a "healthy artsecology". Jac served as the longest-reigning Artistic Director of any theatre in America, as well as on many boards and councils over the years. He participated in the creation of many Arts Organizations and nurtured artists at every level of their experience. The three tenants of Theatre Three — artist, author, and audience — were near and dear to Jac's heart. Please join us while we continue supporting his vision as we move forward into the future.

TACA champions artistic excellence in performing arts organizations and encourages innovation, collaboration, and engagement through financial support, stewardship, and resources.

214.520.3930 taca-arts.org



Photo courtesy of SMU Meadows School of the Arts



"I take pride in finding your new home!"

Mikey Abrams
Realtor

- 🏠 Texas Pride Realty
- 🌐 MikeyAbramsRealtor.com
- ✉ Mikeyabramsrealtor@gmail.com
- ☎ 817-714-5959



DRAMA-FREE FINANCIAL ADVICE SINCE 1868.

Frost is proud to support Theatre Three.
And we'd be proud to help you along your financial journey too.

frostbank.com
Uptown Financial Center
2950 N Harwood, Suite 100
Dallas, TX 75201
(214) 515-4900

MEMBER FDIC



F. SCOTT FITZGERALD'S
THE GREAT GATSBY

The Glitzy.
 The Ritzy.
 The Gatsby.

ADAPTED FOR THE STAGE BY SIMON LEVY
 Directed by Wheelice Wilson Jr.

MAY 13-28

Get Tickets Now! • Call 972-252-2787

All evening performances 7:30 PM. Sunday matinees 2:30 PM.

MAINSTAGE
 IRVING • LAS COLINAS



real estate doesn't have to be dramatic.

*Dana Rigg and Dave Perry-Miller Real Estate
 are proud to support Theatre 3*



DANA WHITEHEAD RIGG

Board of Directors, Theatre 3

214.796.5509

dana@daveperrymiller.com



DAVE PERRY-MILLER
 REAL ESTATE

An Ebby Halliday Company

EBBY HALLIDAY REALTOR®

Matt Doden

Born and raised in D-FW, Matt Doden brings his clients a unique energy and experience, backed by an outstanding reputation and history of success.

Whether you're buying or selling, Matt is as excited about your home as you are, and wants your experience to be as enjoyable as possible.

**Call or text to get started . . .
 Just not during the show.**

214-668-1728

MattDoden@Ebby.com
 MattDoden.Ebby.com

HALLIDAY REALTORS®
 EBBY.COM

©2015, Equal Housing Opportunity



Preston Center



Highland Park



InTown



Park Cities



Lakewood

An Ebby Halliday Company • DavePerryMiller.com

dream AT NIGHT

LIVE MUSIC

wednesday-friday

Wine Bar · Dinner Specials · Patio Seating

Theater 3 ticket
holders receive

10% OFF



The Dream Cafe - Uptown | 2800 Routh St. #170 | Dallas, TX 75201
214.954.0486 www.thedreamcafe.com

2016-17 SEASON • Season 55

MASQUERADE

www.theatre3dallas.com

f t i #t3masquerade



**PSYCHO
BEACH PARTY**

A hilarious camp comedy
by Charles Busch

JUNE 23 - JULY 10, 2016



*The
Novelist*

A comedy-drama by award winning
playwright Theresa Rebeck

AUGUST 4-28, 2016



**the
Wedding
Singer**

A musical by Matt Sklar,
Tim Herlihy and Chad Beguelin

SEPTEMBER 22 - OCTOBER 16, 2016



**WORLD PREMIERE
DAY LIGHT**

A new play
by Bruce R. Coleman

NOVEMBER 17 - DECEMBER 11, 2016



SOUTHWEST PREMIERE

LAUGH

A new comedy by Pulitzer Prize winner and
Theatre Three alumna Beth Henley

JANUARY 5-29, 2017



**PASSING
STRANGE**

Book and lyrics by Stew
Music by Stew and Heidi Rodewald

MARCH 1-28, 2017



**SUSAN
AND
GOD**

A classic 1940s comedy-drama
by Rachel Crothers

APRIL 20 - MAY 14, 2017



*A Little
Night Music*

Music and lyrics by Stephen Sondheim
Book by Hugh Wheeler

JUNE 8 - JULY 2, 2017

For more information about our upcoming season,
please contact our box office at 214.871.3300!

Theatre Three would like to acknowledge our donors who, through their contributions, made it possible for us to present 300+ performances in two spaces to the Dallas community. Your financial support is critical to helping us nurture our local artists and provide you with rich theatrical experiences. Should you wish to be added to this extraordinary list of donors or suggest corrections to our list, please contact our company manager, Kat Edwards, at (214) 871-3300 x117. THANK YOU!

THEATRE ANGELS \$10,000 and above

Mr. Jac Alder
Mrs. Janet Spencer Shaw

PRODUCER'S CIRCLE \$1000 - \$9,999

Dr. & Mrs. Kenneth Altschuler
Lawrence & Elizabeth Barron
Susan E. Barkley
Mr. James Lee Blackwell
Mr. Bill Bond
KEMB
Dianne & Marion Brockett
Mason Brown Family Foundation
Laura Cash-Weems
Kathleen Cunningham &
Randy Willis
Hannah & Stuart Cutshall
Dallas All Sports Association
(Gen. Coun)
Dallas Summer Musicals
Brig. Gen H.J. Dalton, Jr.
Dean Corbitt & Fred Penn
Dede Duson
Laura V. Estrada
David M. Forsythe
Susan & Michael Fortin
Ms. Pauline Graivier
Stan Graner & Jim McBride
James & Gayle Halperin
Ms. Harriet Halsell
Ms. Sally Hansen
Harry S. Moss Foundation
Melinda Hartnett & Chris Ellis
John & Meg Hauge
Mr. & Mrs. David G. Luther Jr.
Dr. Jere H. Mitchell
Nesha & George
June S. Morgan
Navias Family Foundation
Ms. Elya Naxon
Susan E. Barkley
Robert Olson
Ellen Osborne
Margot B Perot
Jason Powell
Wm W. Richardson
Paul & Joan Ridley
Joe and Mary Ring
Ms. Elizabeth Rivera
Dredie & Rusty Rose
The Rosewood Corporation
Enika Schulze
Lorraine Seal
Jerry Setliff & Joyia Elinson
Mr. & Mrs. Kevin &
Linda Spurrier
Don & Norma Stone
Frank Sulzbach
Deborah & Craig Sutton
Victoria & Jack Tutterrow
Dan Van Pelt
Weathers Family Charitable
Fund of CFT
Ralph O. Weber
Charlie & Laura Weems
Martha & Max Wells

SUPPORTING PLAYERS \$250 - \$499

Anonymous Donations
Charles & Janie Barnhardt
John P. Bell, Jr.
Ralph & Jo Blackburn
Cathy Ann Feares &
Mark Blaquiere
Robert & Patricia C Brooks
Tim & Susan Carnell
Kay & Elliot Cattarulla
Rita Cavanaugh
Rita & Cleve Clinton
Betty Taylor Cox
Cynthia Cummings
Steven & Shirley Danner
The Dallas Foundation
John S. Davies & Lou Michaels
District 13 Council Woman
Mr. & Mrs. Robert J. Downs
Ruth Duff
Ms. Ronnie Claire Edwards
John & Harriette Ehrhardt
Lee & Paula Eilbott
Tim & Patricia Elliott
James & Kathryn Erickson
Laura V. Estrada
Mary & Bob Fleming
Colleen Flickinger
Lynn Frank
Gary & Edith Fritzsche
Ms. Jane Gaines
Mrs. H. Matthews Garland
Philip & Gloria Gray
In honor of Jac Alder and in
memory of Norma Young
Hal Systems Corporation

LEADING PLAYERS \$500 - \$999

Akin, Gump, Strauss, Hauer &
Feld, L.L.P.
David and Barbara Spark Baxter
Dr. Bob & Donna Beavers
Ms. Suzanne Burkhead
Kay Champagne
Mr. Raymond J. Clark
Communities Foundation
Morris S. Crim
Sid Curtis

Michael L. Dailey
Carol Dallal
Charron & Peter Denker
Virginia C. Dykes
Ms. Katherine Eberhardt
Joan Eschrich
Bobby & Anne Fincher
Larry & Diane M. Finstrom
W. John Glancy
Elaina & Gary Gross
Greg & Heda Hahn
Larry & Christie Harrison
Mr. & Mrs. Craig Haynes
Mr. & Mrs. Douglas L. Jackson, Jr.
Ms. Jo Kurth Jagoda
Mr. Michael A. Jenkins
Mr. Jerry Knight
Chuck & Lolisa Laenger
Margaret Sloman
Wilson & Gwyn Mason
Maverick Capital Foundation
Mr. & Mrs. Tom McCasland, Jr.
Sam & Barbara McKenney
Ms. Shirley McLean
William & Cynthia Meier
David & Wilma Milne
Joseph & Lucille Montag
Jan Nimmo In memory of
Dan Nimmo
Mr. Patrick Parise
Dana Whitehead Rigg
Rick Russell
Mary Anne Ingram &
Jim Schachterle
Dr. & Mrs. James H. Shelton
Helen M. Sindermann
Sam Y. Dorfman, Jr. M.D.
Susan Swan Smith
Robert & Lynne Thompson
Becky & Brad Todd
Donna Turman
Patricia A. Vaughan
Chris Westfall & Lisa
Mr. Scott Tyler Williams

Mr. & Mrs. Jack W. Hawkins
Christiane Hepfer
Robert & Barbara Herbison
Charles & Trudy Hess
Mr. & Mrs. Shelton G. Hopkins
Betty & Tommy Keith
Caryl Keys
Milton & Ann Killen
Carol & George Kondos
Steve Krant
Peggy Ladenberger, Ph.D.
Belinda & Felix Lozano III
Maguire Oil Company
Ed Maier
Harry Malpass
John S. Davies & Lou Michaels
Scott & Eileen Milvenan
Nancy & Joe Moore
S.D. Moore
Kip & Delynda Moravec
Mal & Linda Noone
Northern Trust
Mr. Thomas J. O'Keefe
Mr. Joseph M. Revesz
Catherine Ritchie
Jules & Hazel Schoenberg
Gary & Genie Short
Mr. & Mrs. Robert S. Sloan
Renee Stanley
Texas Instruments Foundation
Ms. Linda Harris &
Marty van Kleek
Carolyn Wickwire & Dennis West
Z & Shirley Zsohar

BACKSTAGE BENEFACTORS \$125 - \$249

David G. Adler
Barbara Alexander
Mr. & Mrs. David Allred, III
Mr. Curtis Bagley
Steve & Mary Baker
Rosanne Bell
Dr. & Mrs. Steven A. Bell
Ms. Emily Beyette
Frances Blatt & Gene Raboy
Mr. & Mrs. Gregory K. Boydston
Mr. & Mrs. Robert Boyer
Pat & Nora Burns
Randy & Neva Cecil
Julie Crawford
Claudia Davis
Carol Jablonski & Michael Dill
In memory of Gene E. Diskey
John Edstrom
Exxonmobil Foundation
Mr. & Mrs. Ross Farnsworth
Mr. & Mrs. Hugh F. Feagin
Dorothy E. Fischer
Founder of TITUS
Chris & Lisa Fox
James & Sherry Friedberg
Gary & Edith Fritzsche
Mike & Sandra Gist
Donald & Lynn Graham
Ms. Lucile Hamby
Rita Harvey
Mark & Lynda Hamilton
John & Sandi Hebley
Ms. Jean B. Hecht
Chris & Paul Hendricks
Dr. Charlotte Herr
Dr. Mona H. Hersh-Cochran
John Humphrey, M.D.
R. Neil & Joan Hutson
Ms. Carolyn Kacena
Ms. Bonnie Krauss
Anna Kuznetsova
John H. & Pam Lange Jr.
Ms. Judy Lawhorn
Mr. David R. Copeland
George & Gayle Cowart

Bob & Patsy Magruder
Bill & Peg Marrin
Barbara E. Materka
Victoria & Hunter McGrath
Mike & Gayla Miller
Leon Miller
Ed & Josephine Morton
Georgann & King Moss II
Gregg & Debbie Njeman
Bill Pervin & Susan Chizeck
Dana Pickard
Mr. Brett Powell
Dr. W. Paul Radman
Dr. & Mrs. Murray Rice
Dr. Albert Roberts
Elliott & Phyllis Ross
Ms. Elfriede Russell
Mr. Glenn Samford
Hal & Mary Jo Schneider
Jim & Marilyn Schwartz
Elaine Smith
Evelyn R. Smith
Mr. & Mrs. Brandon Spear
Pat Stodghill
Ms. Jean Stoner
Texas Star Arts Council
Ms. Eleanor Trachtenberg
Tyler & Mary Veasey
Mrs. Helen C. Walker
Thomas E. & Charlotte Walker
Hal & Carolyn Warnick
Ms. Teresa Coleman Wash
In memory of June Webb
Paul & Alison Wright
Anne Zhang

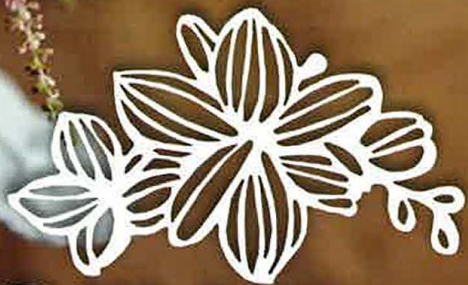
FRIENDS \$50 - \$124

Anonymous
Amy Applebaum
Charles & Susan Arnett
Mr. Greg G. Atkins
Ms. Janet Aune
Ms. Sally Austin
Ms. Maribeth Ayers
Ida Jane & Doug Bailey
Ms. Bettye C. Barnes
Richard Baxter
Karen Beebe
Ms. Sheri Beemer
Carl & Jeannette Benson
Vern Berry
Ms. Taunee S. Besson
Dr. Jo Ellen Bogert
James & Donna Bigner
John & Betty Birken
Henry & Annie Bivins
Julie Blackwell
Ms. Linda Blase
Dorothy E. Fischer
Kass Prince & Craig Boleman
Lori Herbst
Messrs. Doug Miller & Bob Hess
Lee & Mary Higdon
Mr. & Mrs. Michael Higgins
Ennis & Donna Hill
Dr. Pamela R. Hill
Arthur & Dixie Hollers
Judy Hollis
Charles & Julie Holman
John & Beverly E. Houston
Mr. & Mrs. Ed Howard
Dr. & Mrs. Charles Lloyd Hughes
Ms. Diane Hultquist
Henry & Mary Ellen Irving
Linda M. Lee & Jay Isham
Mr. Mark Jacobs
Mr. & Mrs. John Jagers
Howard & Maria Janice
Ms. Emily Jefferson
Sue & Phil John
Iris Johnson
Bill & Elaine Johnson
Mr. Parris Jones

Martin J. & Bonnie Kahn
Mr. & Mrs. A. R. Kampschafer
Ms. Ellen Kaner
Akriti Karki
Ms. Cindy Karm
Michael & Suzanne Kay
Betty Keefe
Betty E. Kelly
Charlotte Kelly
Genell O. & Mark Kelso
Douglas Klahr
Gail C. Klavness
Marianne Kolar
Joyce and Howard Korn
Caryn Korshin
Wendy Kosler
Lee & Kim Laird
Juris & Carolyn Laivins
Dr. & Mr. Ricky Lark
Jean Larson
Jack & Jo Ann Leavitt
Linda C. Lee
Lois Leftwich
Mr. & Mrs. Larry Lester
Patty Lewis
Mrs. Susan Lichten
Ms. Elly Lindsay
Diane Litke
Carol Braden & Vera Locurto
Mr. Leroy Logan
Jim & Peggy Lubniewski
Gregory & Maryam Lush
Dr. Richard & Kay Mabry
Ron Maddox
Ms. Sue Magness
Mrs. Jane Malone
Kay King Martin
Dona Martinez
Betsy Matheson
Katie & Michael McCray
C.R. McDaniel
Robert & Andrea McDaniel
Ms. Joan McDole
Ms. Frances McGlinn
Ricardo McKay
Hilda S. McLaughlin
Paul & Claire McLin
Mr. Gordon McMillan
Mr. Michael McMillan
K. Messerschmitt
Mrs. Sue Young Miller
Ms. Teresa K. Miller
Ms. Tracie Miller
Mrs. Lajohn Molhusen
Nan Moser
Diana Muckleroy
Carolyn & Stewart Musket
Jane R. Myers
Erika & Joel Nannis
Judy & George Nassif
Liz Naughton
Pauline Neff
Jennifer Norris
Ms. Jennifer Noth
Margaret Olsson
Mike & Faith O'Neill
Ellen Osburn
Gary & Susan Oviatt
Angie Parra
Ms. Linda Patston
Ms. Carlene Peal-Sconce
Dr. Frank Perez
Alice Anne Perry
Bill Pervin & Susan Chizeck
Larry & Carol Peters
Mary Petterborg
Russell & Murphy Phillips
Jenny Pichanick
Danielle Pikard
Mrs. Janine Pitts
Chrystin Pleasants
Ms. Cynthia Powell
QuickSilver Interactive Group

Charles & Susan Ramirez
Pat Randolph
Ed Rast
Dr. & Mrs. Peter C. Ray
Bonnie Rea
Ms. Susan Elizabeth Read
Patricia Reed
Mr. & Mrs. Richard A. Reed
Dr. Manfred Reinecke
Catherine Rich
Lynne Richardson
David W. Ricker
Sam & Sharon Ricks
Dr. & Mrs. A.D. Roberts
Mrs. Karen Robinson
Art & Synthia A Rogers
Marsha Y. Rosenberg
Eileen and Harvey Rosenblum
Mrs. Patricia Rowen
Nancy Rubin
Mr. & Mrs. Warren L. Rubin
Ken & Phyllis Rueckert
Doug & Kerrin L. Rummel
Scott & Andrea Rutledge
Ms. Ruth May Rydell
Jay & Jessie Sackler
Ellen Samuels
Melanie Lynn Sanders
Ms. Betty Sarraat
Ms. Jad Saxton
Judy & Jack Scheeter
James & Tracy Sellers
Jean Ann and Rudy Ray Seward
Brooks & Vicki Shafer
Patricia L. Shaughnessy
Mr. & Mrs. Gregory Shinn
Todd & Debbie Siddens
Silicon Valley
Community Foundation
Mrs. Sylvia Silver
Les & Jan Sims
Robert Skeen
Ms. Katie Frank Slack
Chuck & Linda Smith
Neal & Jean E Smith
Sharon Fay Snow
Mr. & Mrs. Lee & Laura Spencer
Jay Stankiewicz & Don Groves
Carolyn & Gene Stern
Ms. Freda Gail Stern
Vivian Annette Stewart
Gene & Marge Stockton
Mrs. Billie M. Stone
Eleanor & Marion Stone
James F. Strunc & Mary Anne
Gentry-Strunc
Peggy Sullivan
Sean & Pamela Sullivan
Lawrence Sweeney
TACA
Daniel T. Tamez
Dr. Joan M. Tamez
Edward Tann
Nita Mae Tannebaum
Terri Taylor
Judith Teter
Toya Thompson
Kim Titus
John & Marilyn Tolle
Mr. Bruce Toplek
Mr. & Mrs. David Townsend
Jo Tuck
Ms. Nancy Tuffin
Leland Turner
Ubs
Uptown Players
Verizon
Mr. John Viola
Mr. Christopher J. Wagley
Cynthia & Jim Waits
Thomas E. & Charlotte Walker
James F. & Barbara Wallis
Hal & Carolyn Warnick
Dale Weathers

Ann Weaver
Dr. Camille Kempke
& Roy Weidig
Rod & Grace Weiland
Paula A. Welch
Ms. Amanda West
Mr. Dale A. Wheeler
J. Kenneth & Alayne Wilemon
Mr. Eric Willborn
Kathy Williams-Hunter
Clark & Jane Willingham
Mr. Richard Wills
Ellen Wilson M.D.
Ed & Ylva Wolfgang
Ken & Anita Wrobel
Chris P. Xeros



DR DELPHINIUM
DESIGNS+EVENTS
5906 W. Lovers Lane Dallas, TX 75225 • 214.522.9911