

2007-2008 SEASON

THEATRE THREE

DECEMBER 13 - JANUARY 20
THEATRE THREE MAINSTAGE

The Goodbye Girl

JANUARY 17 - FEBRUARY 17
THEATRE TOO

I Love You, You're Perfect, Now Change

DEPENDABLE AS TEXAS WEATHER ISN'T.

PETE DELKUS DELIVERS.

NEWS 8 HD WEATHER.

WFAA.COM



□ T3 PEOPLE

BOARD OF DIRECTORS

CHAIR Enika Schulze

LIAISON, CITY OF DALLAS CULTURAL COMMISSION
Sam Yang

Jac Alder, D'Metria Benson, Nancy Cochran,
Roland & Virginia Dykes, Gary W. Grubbs, David
G. Luther, Sonja J. McGill, Patsy P. Yung Micalé,
Jean M. Nelson, Shanna Nugent, Vicki L. Reid,
Elizabeth Rivera, Eileen Rosenblum, PhD,
Janet Spencer Shaw, Ann Stuart, PhD, Katherine
Ward, Karen Washington

ADMINISTRATION

EXECUTIVE PRODUCER-DIRECTOR Jac Alder

COMPANY MANAGER Terry Dobson

ASSISTANT PRODUCER Cory Norman

DIRECTOR OF BUSINESS AFFAIRS Joan Sleight

IN-HOUSE ACCOUNTANT Wendy Kwan

DIRECTOR OF PUBLICATIONS & COMMUNICATIONS
Kimberly Richard

INFORMATION TECHNOLOGY SPECIALIST

Nick Rushing

INTERN SUPERVISOR Mark C. Guerra

EXECUTIVE ADMINISTRATIVE ASSISTANT Adele Acrey

PRODUCTION

TECHNICAL DIRECTOR David Walsh

MUSICAL DIRECTOR Terry Dobson

RESIDENT ARTIST Bruce R. Coleman

MASTER CARPENTER Jeffrey Schmidt

INTERN STAFF

Paul Arnold, Maryam Baig, Stacie Cleland

CUSTOMER SERVICE

CUSTOMER SERVICE DIRECTOR Amy Mills Jackson

HOUSE MANAGER Nancy Meeks

BOX OFFICE DAYTIME SERVICE MANAGER

Darius Warren

BOX OFFICE AGENTS

Tony Banda, Fred Faust, Silvia Martinez,
Chris Sanders

DIRECTOR OF TELEMARKETING Carol Crosby

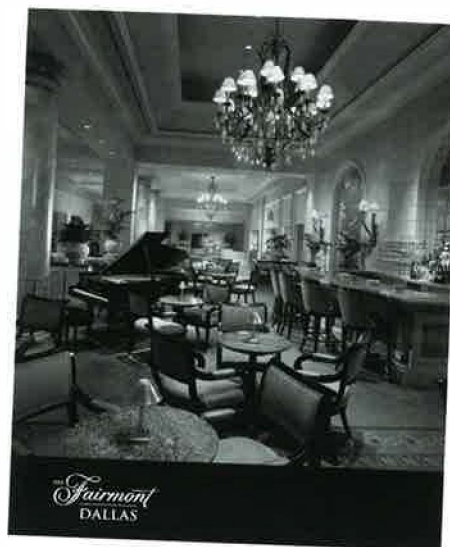
TELEMARKETING AGENTS

Don Baab, Deborah Byrd, Trinity Johannsen,
Natha Taylor, Roger Wilson

DIRECTOR OF SPECIAL MARKETING
Trinity Johannsen

This playbill is a publication of Theatre Three, Inc., 2800 Routh
Street, Suite 168, Dallas, Texas 75201, 214-871-3300,
www.theatredallas.com in support of *The Goodbye Girl*
by Neil Simon (the fourth show of the 2007-2008 Mainstage
Season) and *I Love You, You're Perfect, Now Change* by
Joe Di Pietro & Jimmy Roberts (the fifth show of the 2007-2008
Theatre Too Season).

PLAYBILL EDITORS: Jac Alder & Kimberly Richard
ILLUSTRATION: Harland Wright/Unigraphics
PHOTOGRAPHY: Ken Birdsell/The Image After
DESIGN & LAYOUT: David W. Radabaugh/D Magazine



A Class Act

FOR DINING RESERVATIONS
214.720.5249

FOR OVERNIGHT
ACCOMMODATIONS
214.720.5290

From first act to final bow,
begin or end your evening
with the exceptional service and
cuisine at the legendary Pyramid
Grill. Extend your meal into a
long weekend in any one of our
newly remodeled luxury guest
rooms and suites including our
new upscale "Fairmont Gold"
accommodations opening in
early 2008.

1717 N Akard St. Dallas, Texas 75201 www.fairmont.com/dallas

13th International Theater Festival

Presented by
Teatro Dallas & the South Dallas
Cultural Center
February 1st- 9th, 2008

Venezuela: *The Open Couple* by Nobel
Prize Winner Dario Fo. A black
comedy about a "very open couple."

Barcelona: *La Mano*: a bizarre story
of intrigue and horror.

USA: *Cabaret Unkept*: a hilarious
comedy about a large woman in a
society where size matters.

Nigeria: *Death and the King's
Horseman* by Nobel Prize Winner
Wole Soyinka.

www.TeatroDallas.org

Sponsored by: Texas Commission on the
Arts, TACA, Univison, Al Dia, National
Performance Network, Crowne Plaza Hotel, &
City of Dallas Office of Cultural Affairs

EXECUTIVE PRODUCER-DIRECTOR **JAC ALDER** PRESENTS ...



The Goodbye Girl

By Special Arrangement with Music Theatre International

AUTHOR Neil Simon

COMPOSER Marvin Hamlisch, LYRICIST David Zippel

MAIN STAGE

ARTISTIC STAFF

DIRECTOR **Bruce R. Coleman**

MUSICAL DIRECTOR **Terry Dobson**

SET DESIGN **Jac Alder**

LIGHTING DESIGN **Sam Nance**

COSTUME DESIGN

Mark C. Guerra & Bruce R. Coleman

ASSISTANT MUSICAL DIRECTOR

Pamela Holcomb-McClain

CHOREOGRAPHER **Andi Allen**

CAST

MARK **Bruce R. Coleman**

MELANIE **Claire Fowler**

PAULA MCFADDEN

***Lisa-Gabrielle Greene**

CYNTHIA ****Lindsay Kay**

MRS. CROSBY **Natalie King**

ELLIOT GARFIELD ***Gregory Lush**

BILLY & RICKY SIMPSON

Darius-Anthony Robinson

DONNA **Lucia Welch**

LUCY MCFADDEN **Ruby Westfall**

ENSEMBLE

****John Biggan**, ****Josh Blann**,

Tandi Brame, **Tracie Foster**, ****Carlos**

Gomez, ****Teresa Valenza** (dance

captain)

MUSICIANS

CONDUCTOR/KEYBOARDS

Terry Dobson or **Pamela Holcomb-McClain**

DRUMS/PERCUSSION **Mike McNicolas**

BASS **Peggy Honea** or **David Odegaard**

WOODWINDS

Ellen Kaner & Michael Dill

PRODUCTION STAFF

AEA STAGE MANAGER **Doug Miller**

AEA ASSISTANT STAGE MANAGER

Jac Alder

TECHNICAL DIRECTOR **David Walsh**

PRODUCTION ASSISTANT

Maryam Baig

MASTER CARPENTER **Jeffrey Schmidt**

PRODUCTION CREW

Paul Arnold, **Maryam Baig**,

Stacie Cleland, **Mark C. Guerra**

SCENE SYNOPSIS

& MUSICAL NUMBERS

PLACE AND TIME

New York, Present Day

ACT I

SCENE 1

Paula's Apartment

"This Is as Good as It Gets"

PAULA & LUCY

"No More"

PAULA

SCENE 2

A Dance Studio

"A Beat Behind"

PAULA, BILLY AND ENSEMBLE

SCENE 3

In Front of Paula's Building

"This Is as Good as It Gets" (reprise)

LUCY, MELANIE AND CYNTHIA

SCENE 4

Paula's Apartment

"My Rules"

ELLIOT & PAULA

"Good News, Bad News"

ELLIOT, PAULA AND LUCY

SCENE 5

Paula's Apartment

"Good News, Bad News" (reprise)

MRS. CROSBY

SCENE 6

An Off-Off-Broadway Theatre

SCENE 7

Central Park

"Footsteps"

PAULA & LUCY

SCENE 8

Paula's Apartment

"How Can I Win?"

PAULA

SCENE 9

An Off-Off-Broadway Theatre

"Richard Interred"

ELLIOT, PAULA, LUCY, MARK,

MRS. CROSBY, DONNA AND ENSEMBLE

ACT II

SCENE 1

Paula's Apartment

"How Can I Win?" (reprise)

PAULA

SCENE 2

Paula's Apartment

"Good News, Bad News" (reprise)

ELLIOT

SCENE 3

The Ricky Simpson Show

"Too Good to Be Bad"

PAULA, DONNA AND JENNA

SCENE 4

Paula's Apartment

"2 Good 2 B Bad"

MRS. CROSBY

SCENE 5

Paula's Apartment

"Who Would've Thought?"

PAULA, ELLIOT, LUCY, MELANIE

AND CYNTHIA

SCENE 6

The Rooftop of Paula's Building

"Paula (An Improvised Love Song)"

ELLIOT & PAULA

SCENE 7

Paula's Apartment

SCENE 8

A Schoolyard

"Who Would've Thought?" (reprise)

LUCY, MELANIE AND CYNTHIA

SCENE 9

The Lake in Central Park

"I Can Play This Part"

ELLIOT

SCENE 10

A TV Studio

"Jump for Joy"

PAULA & ENSEMBLE

SCENE 11

Paula's Apartment

"What a Guy"

PAULA

SCENE 12

In Front of Paula's Building

Finale

PAULA, ELLIOT AND LUCY



CLOCKWISE FROM TOP LEFT:
Gregory Lush ELLIOT GARFIELD;
Bruce R. Coleman MARK; **John Biggan**
ENSEMBLE; **Claire Fowler** MELANIE;
Tracie Foster ENSEMBLE; **Teresa**
Valenza ENSEMBLE and **Tandi Brame**
ENSEMBLE

* indicates members working under Actor's Equity Association contracts in this production.

** indicates a performer enrolled in the AEA membership candidate program.

There will be one fifteen minute intermission between Acts I and II.

Neil Simon

AUTHOR

Marvin Neil Simon was born in the Bronx on July 4, 1927, and grew up in Washington Heights at the northern tip of Manhattan. He attended New York University briefly (1944–45) and the University of Denver (1945–46) before joining the United States Army where he began his writing career working for the Army camp newspaper.

After being discharged from the army, Simon returned to New York and took a job as a mailroom clerk for Warner Brothers' east coast office. He and his brother Danny began writing comedy revues and eventually found their way into radio, then television, where they toiled alongside the likes of Woody Allen, Mel Brooks and Larry Gelbart, writing for *The Phil Silvers Show* and Sid Caesar's *Your Show of Shows*. Simon received several Emmy Award nominations for his television writing, then moved on to the stage where he quickly established himself as

America's most successful commercial playwright by creating an unparalleled string of Broadway hits beginning with *Come Blow Your Horn*. During the 1966–67 season, *Barefoot in the Park*, *The Odd Couple*, *Sweet Charity* and *The Star Spangled Girl* were all running simultaneously. During the 1970–71 season, Broadway theatregoers had their choice of *Plaza Suite*, *Last of the Red Hot Lovers*, and *Promises, Promises*. Still, critical acclaim came slowly for Simon. In spite of the fact that he had had more smash hits than any other American playwright, critics continued to take pleasure in dismissing him as a mere "writer of gags."

In 1973, following the death of his wife, Simon reached a low point in his career with two failures: *The Good Doctor* (1973) and *God's Favorite* (1976). A move to California, however, reinvigorated him and he produced a much more successful play later that year in *California Suite*. After marrying actress Marsha Mason, Simon went on to write *Chapter Two* (1977) which was considered by many critics to

be his finest play to that date. His fourth musical, *They're Playing Our Song*, proved fairly successful in 1979, but his next three plays (*I Ought to Be in Pictures*, *Fools*, and a revised version of *Little Me*) all proved unsuccessful at the box office.

Then, in 1983, Simon began to win over many of his critics with the introduction of his autobiographical trilogy—*Brighton Beach Memoirs* (1983), *Biloxi Blues* (1985) and *Broadway Bound* (1986)—which chronicled his stormy childhood, his brief Army time, and the beginning of his career in television. Suddenly the critics began taking him seriously. He followed up in 1991 with *Lost in Yonkers* for which he won the Pulitzer Prize for Drama.

During the course of his career, Simon has won three Tony Awards for Best Play (*The Odd Couple*, *Biloxi Blues* and *Lost in Yonkers*.) He has had more plays adapted to film than any other American playwright and, in addition, has written nearly a dozen original screenplays himself. He received Academy Award nominations for his screen-

plays *The Odd Couple* (1968), *The Sunshine Boys* (1975) and *California Suite* (1978). He has also been the recipient of the Antoinette Perry Award, the Writers Guild Award, the Evening Standard Award, the New York Drama Critics Circle Award, the Shubert Award, the Outer Circle Award, and a 1978 Golden Globe Award for his screenplay, *The Goodbye Girl*.

Marvin Hamlisch COMPOSER

Marvin Hamlisch's life in music is notable for its great versatility as well as substance. As composer, Hamlisch has won virtually every major award that exists: three Oscars, four Grammys, four Emmys, a Tony and three Golden Globe awards; his groundbreaking show, *A Chorus Line*, received the Pulitzer Prize. He is the composer of more than forty motion picture scores including his Oscar-winning score and song for *The Way We Were* and his adaptation of Scott Joplin's music for *The Sting*, for which he received a third Oscar. His prolific output of scores for films include original compositions and/or musical adaptations for *Sophie's Choice*, *Ordinary People*, *The Swimmer*, *Three Men and a Cradle*, *Ice Castles*, *Take the Money and Run*, *Bananas*, and *Save the Tiger*. Marvin Hamlisch holds the position of Principal Pops Conductor with the Pittsburgh Symphony Orchestra. He is also the Pops Conductor for the National Symphony (this is the first time that anyone has held such a position) and the San Diego Symphony Orchestra. Mr. Hamlisch was

LEFT TO RIGHT:
Josh Blann ENSEMBLE and
Lucia Welch DONNA



Musical Director and arranger of Barbra Streisand's 1994 concert tour of the US and England as well as of the television special, "*Barbra Streisand: The Concert*" (for which he received two of his Emmys). He served in the same capacities for her Millennium concerts. Hamlisch is a graduate of both Juilliard and Queens College (where he earned a Bachelor of Arts degree). He believes in the power of music to bring people together. "Music can make a difference. There is a global nature to music, which has the potential to bring all people together. Music is truly an international language, and I hope to contribute by widening communication as much as I can."

David Zippel LYRICIST

David Zippel's lyrics have won him the Tony Award, two Academy Award nominations, two Grammy Award nominations, and three Golden Globe Award nominations. His songs appear on over twenty-five million CDs around the world, and have been recorded by many great singers including Stevie Wonder, Christina Aguilera, Mel Tormé, Ricky Martin, Cleo Laine, Barbara Cook and Nancy LaMott.

He made his Broadway debut with *City of Angels* (music by Cy Coleman, book by Larry Gelbart), for which he received the Tony Award, the New York Drama Critics Circle Award, the Drama Desk Award and (in London) the Olivier Award and Evening Standard Award. He also wrote the lyrics to the Broadway musical *The*

Goodbye Girl (music by Marvin Hamlisch, book by Neil Simon) for which he received an Outer Critics Circle nomination. With eight-time Oscar winning composer Alan Menken, he wrote the songs for Disney's feature film *Hercules*. Michael Bolton recorded "Go the Distance" from that score, which was a #1 record and nominated for an Academy Award and Golden Globe. With Matthew Wilder, he wrote the songs for Disney's animated feature *Mulan*, which earned him his second Academy Award nomination. "Reflection," from *Mulan*, was recorded by Christina Aguilera and is featured on her multi-platinum debut album. Christina and David collaborated again with Todd Chapman to write the song "We're a Miracle," which was featured as the end title song for *Pokemon: The First Movie*, and on its #1 soundtrack album. With Mervyn Warren he wrote the end title for the Jennifer Lopez movie *The Wedding Planner*. His lyrics for *The Swan Princess*, an animated feature with music by Lex De Azevedo, were nominated for a Golden Globe Award. With composer Andrew Lloyd Webber, he wrote the songs for the London and Broadway musical *The Woman in White*.

He has contributed lyrics to the revues *A... My Name is Alice* and *Diamonds*, and with composer Doug Katsaros, wrote the musical comedy *Just So*. With Wally Harper he wrote numerous songs for Barbara Cook, including "It's Better with a Band," which became the title song of a hit revue showcasing David's lyrics. *It's*

Better with a Band has been presented Off-Broadway, at the Donmar Warehouse in London, and at the Prince Music Theater in Philadelphia.

In early 2003, Williamson Music began representing Zippel's music publishing interests and the administration of his catalogue, In Your Ear Music. In the same year, he completed *Princesses*, his own adaptation of the classic children's novel *A Little Princess* (music by Matthew Wilder, book by Cheri Steinkellner and Bill Steinkellner). He additionally has worked on *Buzz!*, a musical extravaganza about the life of Busby Berkeley (music by Alan Menken, book by Larry Gelbart); *Pamela's First Musical*, based on Wendy Wasserstein's children's book (music by Cy Coleman, book by Wasserstein); *N, the story of Emperor Napoleon and his Josephine* (music by Coleman, book by Gelbart); and *Lysistrata: Sex and the City State*. (Adaptation by Gelbart, music by Menken).

A graduate of Harvard Law School, David Zippel is delighted not to practice law.

ARTISTIC STAFF

Bruce R. Coleman

DIRECTOR/DESIGNER/MARK
Mr. Coleman has been associated with Theatre Three since 1985. For this company, he has helmed such diverse productions as *Tale of the Allergist's Wife*; ... *And the World Goes 'Round*; *A Grand Night for Singing*; *Central Park West*; *Nice People Dancing to Good Country Music*; *Once on this Island*; *The Boyfriend*; *Company*; *Drood!*; *Wholley*

Moliere; Personals; Lies and Legends: The Musical Stories of Harry Chapin; The Triumph of Love; Rise and Shine; and most recently, *Mack & Mabel*. As a costume designer, some of Bruce's favorite assignments have included *June Moon*, *The Women*, *Into the Woods*, *Threepenny Opera*, *The Miser*, *Major Barbara*, and *Pygmalion*. Most Recently, Bruce directed and designed *Dracula* for ICT Mainstage, designed the costumes for *The Ladies of the Camalias* for Echo Theatre, and directed *Tick, Tick, ... Boom!* for Uptown Players. An eleven times winner of the prestigious Leon Rabin Award, Bruce has also been recognized by the Dallas Critics Forum Awards, The Dallas Observer's "Best Of" issue, and the Column Awards for his contribution to local theatre. In his spare time, Bruce dances with Momentum Dance in Irving, under the direction of Jaquelyn Ralls Forcher. "This is for Jane, my very own goodbye girl. Love you."

Jac Alder

SET DESIGN

Mr. Alder was one of Theatre Three's original founders in 1961 along with his late wife, Norma Young. He continues to serve as the theatre's Executive Producer-Director as both the artistic and administrative CEO of the organization. He regularly directs: his most recent assignments have been *Pygmalion* and *Caroline, or Change* on the Theatre Three arena stage, and *All About Bette: An Evening with Bette Davis*, *Blind Date*, and *My Own Private Diva* on the Theatre Too studio stage. Trained as

an architect, Mr. Alder also regularly designs shows including recent productions of *Caroline, or Change*, *Mack & Mabel*, *Season's Greetings* and the shows of this playbill, *The Goodbye Girl* and *I Love You, You're Perfect, Now Change*. His adaptation of the Moliere classic, *The Miser*, was premiered at Theatre Three in 1998 and is to be produced in his native state this season by Oklahoma City Rep this February. Other adaptations include a musical version of Goldoni's *The Venetian Twins* (which also played at the Pitlochry Theatre in Scotland), an adaptation of Machiavelli's *Mandragola*, and two other Moliere classics, *The Physician in Spite of Himself* and *The Imaginary Invalid*. In his spare time he enjoys himself. He has no spare time.

Sam Nance

LIGHTING DESIGNER

Mr. Nance is pleased to be designing his first show for Theatre Three. He has designed for ICT Mainstage where his most recent work was *The Pirates of Penzance* and *Dracula*. He is the resident lighting designer for Pegasus Theatre where he has lit their innovative "living black and white" shows for a number of years, as well as their more colorful presentations. Other companies that have seen his light include the Shakespeare Festival of Dallas, Dallas Theater Center, Theatre Britain, and the Lois Pope Theater in Florida. Shows include *Woody Guthrie's American Song*, *The Lion in Winter*, *Catholic School Girls*, and *A Midsummer Night's Dream*.



Mark C. Guerra

COSTUME DESIGNER

This is Mr. Guerra's first time designing costumes for a Mainstage show at Theatre Three. His past credits include *Only Heaven*, *A Christmas to Forget/A Christmas Memory*, *Frozen*, *The Big Bang*, and *Season's Greetings*—all in Theatre Too, Theatre Three's basement studio. He is also currently designing Risk Theater Initiative's Christmas show, *Mrs. Bob Cratchit's Wild Christmas Binge* and costumed *The Blue Room*, Risk's submission to the F.I.T. Festival this past summer. Mark has been seen on stage at Theatre Three in last year's summer hit, *The Full Monty* and this year's season opener, *Mack and Mabel*. He was also seen onstage in Risk Theater Initiative's season opener, *The Last Days of Judas Iscariot* and is currently playing Mr. Fezziwig in *Scrooge - the Musical* at LifeStage Theatre, Grapevine's new professional theater. Mark is the Intern Supervisor at Theatre Three. He graduated with a BA in theatre performance/theater design from the University of Texas-Pan American in Edinburg, Texas.

Pam Holcomb-McLain

ASSISTANT MUSIC DIRECTOR

Ms. Holcomb-McLain is making her Theatre Three

Darius-Anthony Robinson

BILLY & RICKY SIMPSON

debut with *The Goodbye Girl*. Additional credits in Metroplex venues include *Songs for a New World* and *The Fantasticks* at Repertory Company Theatre, Richardson; *The Pirates of Penzance* and *Nunsense* (Kathleen Freeman Column Award) at ICT Mainstage, Irving; *The Mikado* and *Beauty and the Beast* at Garland Civic Theatre; and *Assassins*, *Gypsy*, and *Into the Woods* (Column nomination) at Theatre Coppell. When not at rehearsals, Pam teaches music to pre-schoolers and musical theatre to elementary students. She sends a big thanks to Terry and Bruce and, as always, love to Scott and the furry kids at home.

Andi Allen

CHOREOGRAPHER

Ms. Allen has been a busy director and choreographer since she last worked at Theatre Three playing the title role in *Drood!* Other Theatre Three credits include appearances in *Anything Goes*, *Candide*, and *Porter, Please!* A recipient of multiple Column Awards for direction and choreography, her credits include the regional premieres of *Cowboys* at Pegasus Theatre and *The Adventures of Tom Sawyer* for ICT MainStage, as well as the Uptown Players' production of *Ruthless!* for which she received a DFW Critics Forum Award. In January, Ms. Allen will be writing, directing and performing in the popular musical revue *Broadway Our Way* for Uptown Players.

K. Doug Miller

AEA STAGE MANAGER

Mr. Miller was last seen on

stage at Theatre Three in *The Big Bang*. Other Theatre Three credits include *The Fantasticks*, *The Frogs*, and *Saturday Night*. Favorite roles include: Seymour in *Little Shop of Horrors*, WaterTower Theatre; Frankie in *Pageant*, Uptown Players; Sparky in *Forever Plaid*, Flower Mound Performing Arts Theatre; and the Baker in *Into the Woods*, ICT Mainstage. Local directing credits: *A Man of No Importance*, *Love! Valour! Compassion!*, *Aida*, *The Last Session*, *Valley of the Dolls*, and *Twilight of the Gods*, Uptown Players; and *Jack and Jill*, Second Thought Theatre. He has also directed staged readings for Kitchen Dog Theatre and Echo Theatre.

CAS

John Biggan

ENSEMBLE

Mr. Biggan received his BFA in theatre performance at UT-Arlington. This performance will be his debut on the Theatre Three stage. Some of his roles in the Dallas metro area are Lombard in *And Then There Were None*, Onstage in Bedford; Shroeder in *You're a Good Man, Charlie Brown*, Starlight Performing Arts, Euless; Zombie #1 in *Night of the Living Dead*, Dallas Children's Theatre; and Chad in *High School Musical On Stage!*, Tetro Delle Muse, Plano. John's television/film experiences include *The Ringer* and *Inspector Mom*, and commercial work for Denny's, Pepsi, Mary Kay, and On the Border (spokesperson). He says thanks to his friends and family, especially Lew, for their support and to

the entire production staff for this opportunity.

Josh Blann

ENSEMBLE

Mr. Blann is making his first appearance at Theatre Three. Previously he spent several seasons with PlayMakers Rep in North Carolina, where he received his MFA in acting from the University of North Carolina at Chapel Hill. Some productions he has acted in include: *Richard II*, *A Prayer for Owen Meany*, *Salome*, *Richard III*, *Holy Ghosts*, *Tartuffe*, *MacBeth*, *Two Gentlemen of Verona*, and *Metamorphoses*. He has also taught theatre at the high school and college levels.

Tandi Brame

ENSEMBLE

Ms. Brame received a Bachelor of Arts and Science from Louisiana State University, where she received awards for voice and studied music and theater. She also participated in a study abroad program in London, England. While there she studied the works of William Shakespeare at Goldsmith College. Her credits include the movie *Billy Mean Pipes*, directed by Jon Keeyes, the multimedia production *Rainbow Country: The Life and Death of Bob Marley*, the opera *Antigone*, the *Nutcracker Suite* ballet, and now *The Goodbye Girl* at Theatre Three.

Tracie Foster

ENSEMBLE

This is Ms. Foster's first show at Theatre Three. She has appeared at several local theatres including Casa

LEFT TO RIGHT: Lisa-Gabrielle Greene PAULA MCFADDEN and Ruby Westfall LUCY MCFADDEN; Natalie King MRS. CROSBY

Mañana, Theatre Arlington and Granbury Opera House, and she has toured nationally in *A Christmas Carol* and *101 Dalmatians*. Tracie also acts in independent films and commercials. She currently dances all over the world as Bob the Builder and Angelina Ballerina. Tracie is married to magician Michael Stein; they have a 4lb. Pomeranian named Moselle. "Thank you Michael for all of your confidence and patience!"

Claire Fowler

MELANIE
Ms. Fowler is making her debut with Theatre Three. She is a high school freshman with the Texas Tech homeschool program and is also studying music theory through Boston's Burklee College of Music. Favorite roles include Mary Lennox in *Secret Garden*, Dixie in *Cat on a Hot Tin Roof*, Francie in *A Tree Grows in Brooklyn*, Gloria in *Wait Until Dark*, Tessie in *Annie*, and Polly in *Jane Eyre*. Metroplex venues include Bass Hall, Casa Mañana, ICT Mainstage, Lyric, Runway and Echo. "Heartfelt thanks to Bruce for giving me my wings and to my new 'jazzy' friends for their support."

Carlos Gomez

ENSEMBLE
Mr. Gomez is making his Theatre Three debut with *The Goodbye Girl*. His previous theatre experience includes *Best Little Whorehouse in Texas* at Contemporary Theatre of Dallas; *Hair* and *The Who's Tommy* at Uptown Players; *Cats* at Garland Civic Theatre; and *Thoroughly Modern Mille,*

Crazy for You, and *Joseph and the Amazing Technicolor Dreamcoat* at Garland Summer Musicals.

Lisa-Gabrielle Greene

PAULA MCFADDEN
Ms. Greene is "completing the circle of acting" here at her home theatre by sharing the stage with her daughter, Ruby. Lisa-Gabrielle met her husband, Chris Westfall, while starring opposite him on these same boards in *The Fantasticks*. Theatre Three audiences will remember her in *The Wild Party*, *Blithe Spirit*, *Triumph of Love*, *Dreams from a Summer House*, *A Grand Night for Singing* (Dallas Theatre Critics Forum Award), and many more. She has recently been "moonlighting" at another fave theatre, Uptown Players, where she played in *Hair* (Rabin Nomination) and *The Who's Tommy* (Rabin Nomination). Lisa also has a four-year-old daughter, Magnolia.

Lindsey Kay

CYNTHIA
Ms. Kay makes her debut at Theatre Three but has performed numerous roles in Metroplex theaters. Some of her favorite roles include: the girl in *The Pillowman* at Stage West, Fort Worth; Annie in *Annie* and Helen Keller in *The Miracle Worker* at Starlight Performing Arts Theatre, Euless; Baby Louise in *Gypsy* at Theatre Coppell; and Lady Alisande in *A Connecticut Yankee in King Arthur's Court* at Onstage in Bedford. Lindsey is an Actor's Equity candidate and attends Harwood Junior High in Bedford. She has

attended the Creative Arts Theatre and School (acting classes) and Septien Vocal Studios, and studied theatrical dance. Lindsey sends thanks to everyone involved in this production as well as to Anicia, Pam, Lauren, and Casey for their help over the years and to her mom for being her chauffeur.

Natalie King

MRS. CROSBY
Ms. King returns to Theatre Three in this role. Besides having had her first job in theater here at Theatre Three, some of her favorite roles were also here, including, *The World Goes Round* (Web Critics Award—Best Supporting Actress), *Rise And Shine*, *A Grand Night For Singing* (Critics Choice Award—Best Ensemble), and *Once On This Island*. She also performed in Uptown Players' *The Life* and *A New Brain*, for which she was nominated for a Rabin Award. Other regional shows include, *The Best Little Whorehouse In Texas*, *A... My Name Is Alice*, *Blues Ballads Broadway @ Blessings*, *Rockin' Christmas*, *Divas Of Dallas*, *Abbyssinia*, *Broadway Our Way*, *Godspell* and *Hair*. Natalie also performed as Quintara the Storyteller at Walt Disney World's Animal Kingdom and the Magic Kingdom.

Gregory Lush

ELLIOT
Mr. Lush holds an MFA from the University of Mississippi and is an associate teacher of Fitzmaurice Voicework. Gregory last appeared on Theatre Three's stage as Henry



Higgins in *Pygmalion*. Other Theatre Three performances include *Snake/Storyteller* in *Children of Eden*. His previous Metroplex theatre appearances include: Berowne in *Love's Labours Lost* and Caliban in *The Tempest* at the Dallas Shakespeare Festival; Mitch in *Tuesdays with Morrie* at Labyrinth Theatre; Adam in *Time of My Life* at Stage West, Fort Worth; and Dromio of Ephesus in *Comedy of Errors* at Fort Worth's Shakespeare Festival. Gregory's national experience includes Canker in *Denmark* at Victory Gardens, Chicago; Hamlet in *Hamlet* and Benedick in *Much Ado About Nothing* at Genesis Shakespeare Festival, Quincy, Illinois; Gerry in *Dancing at Lughnasa* at Callan Theatre, Catholic University of America, Washington, DC; Laertes in *Hamlet* at VpStart Crow Productions, Manassas, Virginia; and Ross in *Macbeth* at Theatre at Lime Kiln, Lexington, Virginia. He offers thanks to his amazing family.

Darius-Anthony Robinson

BILLY & RICKY SIMPSON
Mr. Robinson makes his Theatre Three debut in *The Goodbye Girl*. Darius-Anthony has currently been seen play-



ing Cogsworth in *Beauty and The Beast* (Garland Community Theater). He has also been seen in the cabaret show, *Let Us Entertain You* (Duplex Theatre), choreographing/performing in the off-off-Broadway musical, *Broadway Revisited: A Musical Revue* (Malverone Players), and *Hair* (Uptown Players). Local Credits include: GCT, ACT, TA, ICT Mainstage, FMT, and Dallas Summer Musicals. He has served as principal/ensemble dancer for the Alvin Ailey American Dance Theater and Steps on Broadway. "Thanks a bunch Bruce, Terry, Doug, and my girl Andi, and this amazing cast and crew. Thanks to my family and friends for loving me and my many characters on and off stage!"

Teresa Valenza

ENSEMBLE
Ms. Valenza received her BFA in acting at Texas State University, 2006, where she graduated Summa Cum Laude and was an American Movie Classics Regional Scholarship winner. Her recent debut with us was as Velvet in *Popcorn*. Other favorite roles have been Catherine in *Nice People*, *Dancing to Good Country Music* at Stage West Theatre, and Florinda in *The Rover* at Texas State University. Teresa's television and film experience include Sarah in *Wait by SpiderCircle Films*. In addition to her formal education, she has had twenty plus years of training in ballet, tap, jazz, and hip-hop.

Lucia A. Welch

DONNA
Ms. Welch is making her Theatre Three debut. Performances on other Metroplex stages include Water Tower Theatre, Uptown Players, Contemporary Theatre, The Eisemann Center, The Labyrinth, Echo Theatre, Plano Rep, ICT Mainstage and Ameristage Players. Lucia holds a BA in speech and theatre. She does commercial work, models for print advertising, and is a church soloist. "Many thanks to Terry and Bruce for this wonderful opportunity." Her performance is dedicated to Jerry for his constant love and support and for casting her in the best role of her life: Mom to their four great kids!

Ruby Westfall

LUCY MCFADDEN
Eleven-year-old Ruby is a 6th grader at Travis Vanguard and Academy right here in Uptown. She makes her Theatre Three debut with this production and is playing her own mother's daughter! Ruby is active with Imagination Players where she has played Jellylorum in *Cats* (doing the original Broadway choreography), Bagheera in *The Jungle Book*, Irene in *Footloose* and ensemble in *Oklahoma*. She wishes to send extra love and thanks to her teachers at Travis (especially Mr. Schulte), Bruce, Terry, Dad, Noli (her little sis, Magnolia), Linda Leonard, and Lynn Ambrose.

2007–2008

MAINSTAGE

MACK & MABEL

JULY 19–AUGUST 19

A Broadway and London hit by composer **Jerry Herman**, book by **Michael Stewart**.

In the days of silent movies, director Mack Sennett's comic two-reelers made Mabel Normand America's most adored comedienne. Composer Jerry Herman celebrates this pioneer film duo with his trademark musical panache and show business dazzle.

POPCORN

SEPTEMBER 6–OCTOBER 7

The Dallas premiere of the taboo-shattering comedy-thriller by **Ben Elton**.

Elton's award-winning comedy has vulgar vigor and smart-mouthed one-liners, but surprisingly has the moral purpose of a Jacobean revenge drama. (Rated VERY Adult)

PYGMALION

OCTOBER 25–NOVEMBER 25

George Bernard Shaw's most illustrious and illuminating comedy.

Few plays in the English language contain such intellectual and comic inventions—all so Shaw could argue for nothing less than the perfection of civilization.

THE GOODBYE GIRL

DECEMBER 13–JANUARY 20

Book by **Neil Simon**, music by **Marvin Hamlisch**, lyrics by **David Zippel**.

The single mom—a thirty-something dancer—struggles through New York disappointments, user boyfriends, and then clashes with an upstart intruder who may be just another bad actor... or is he?

CRIMES OF THE HEART

FEBRUARY 14–MARCH 16

The Pulitzer Prize-winning comedy by former Theatre Three actress, **Beth Henley**.

In Hazlehurst, Mississippi, the three Magrath sisters face troubles both grave and hilarious but in the end manage to escape the past to seize the future.

WHODUNNIT

APRIL 3–MAY 4

A comedy-thriller by the author of *Sleuth*, **Anthony Shaffer**.

Brilliantly inventive Anthony Shaffer gleefully took all he learned from both Alfred Hitchcock and Dame Agatha Christie and fashioned his own closed-circle-English-country-house-murder-mystery.

A DOG'S LIFE

MAY 22–JUNE 22

A howlingly funny new musical by **Sean Grennan & Leah Okimoto**.

This refreshing new musical manages to be goofily hilarious and sweetly moving—telling the story of a rescued pooch, the young man who adopts him, and a complicated pack of four footed pals, all puzzled by the strange ways of the humans around them.



Gregory Lush *THE GOODBYE GIRL*

THEATRE TOO

ALL ABOUT BETTE: AN EVENING WITH BETTE DAVIS

JULY 6–JULY 29

A critically hailed play by **Camilla Carr**.

Theatre Three has brought back this new piece from its extended hit run last season. Morgana Shaw will recreate the performance that won her "Best Actress in an Equity Play" Column Award.

BLIND DATE

AUGUST 17–SEPTEMBER 2

An exciting new intimate drama by South American playwright **Mario Diamant**.

An anxious adulterer alights in a confessional mood on the blind man's favorite Buenos Aires park bench. From that chance meeting the blind man, a distinguished poet, sees deeply not only into the life of others, but deeply into his own life and its still-astonishing possibilities.

MY OWN PRIVATE DIVA

OCTOBER 5–21

A "confessional cabaret" by **Terry Dobson**.

"Best New Play" award-winning cabaret (from both Column Awards and Dallas/Fort Worth Critics' Forum Awards) performed by the author and his personal diva, Sally Soldo.

SEASON'S GREETINGS

NOVEMBER 23–DECEMBER 16

The hilarious family comedy by **Alan Ayckbourn**.

A Christmas gathering replete with family recriminations, a chaotically incompetent puppet show, overconsumed Christmas spirits, and a hilariously bungled midnight tryst, make this superbly crafted comedy a must-see holiday show.

THE LA VIDAS' LANDLORD

MARCH 14–30

A clash of cultures in a new comedy-drama by **Lawrence Weinstein**.

An idealistic high school teacher rents out an apartment to a political refugee from Central America, but there are more than minor philosophical differences between the two which cannot be solved by the teacher's anxious attempts to be understanding.

MID-LIFE, THE CRISIS MUSICAL

MAY 2–18

A revue of middle-aged gains and losses by **Bob & Jim Walton**.

This polished, fall-out-of-your-seat-funny show is woven out of a series of vignettes dealing with classic mid-life phenomena—all unpleasant, and virtually all hilarious. Brash, honest, refreshing, and inventively silly.

SPECIAL ENGAGEMENT

I LOVE YOU, YOU'RE PERFECT, NOW CHANGE

JANUARY 17–FEBRUARY 17

The most favorite show ever at Theatre Three by **Joe Di Pietro & Jimmy Roberts**.

It had a huge run in 2000 on the Mainstage, it moved into Theatre Too that fall and played there for an amazing three years! Since then this record-breaking musical revue has returned annually for an encore run and manages to find new enthusiasts who pack the place to laugh and cheer.

Theatre Three, Inc.
2800 Routh Street
Suite 168
Dallas, Texas 75201

TICKETS & INFORMATION
214-871-3300
theatre3dallas.com

EXECUTIVE PRODUCER-DIRECTOR **JAC ALDER** PRESENTS ...



I Love You, You're

By Special Arrangement with R&H Theatricals

AUTHOR & LYRICIST Joe DiPietro, COMPOSER Jimmy Roberts

THEATRE TOO

ARTISTIC STAFF

DIRECTOR/MUSICAL DIRECTOR

Terry Dobson

ASSISTANT MUSICAL DIRECTOR

Vonda Bowling

SET DESIGN **Jac Alder**

LIGHTING DESIGN **David Opper**

COSTUME DESIGN **Bruce R. Coleman**

CAST

MAN 1 ***Sonny Franks**

WOMAN 1 ***Lindsey Holloway**

MAN 2 ***Doug Jackson**

WOMAN 2 ***Amy Mills**

MUSICIANS

PIANO **Vonda Bowling**

VIOLIN **Christina Harpine**

PRODUCTION STAFF

AEA STAGE MANAGER **Kerry Cole**

TECHNICAL DIRECTOR **David Walsh**

PRODUCTION ASSISTANT

Stacie Cleland

MASTER CARPENTER **Jeffrey Schmidt**

MASTER ELECTRICIAN **Paul Arnold**

PRODUCTION CREW

**Paul Arnold, Maryam Baig, Stacie
Cleland, Mark C. Guerra**

SCENE SYNOPSIS & MUSICAL NUMBERS

ACT I

Prologue

COMPANY

Cantata for a First Date

COMPANY

"Not Tonight, I'm Busy, Busy, Busy!"

MAN 2 & WOMAN 2

"A Stud and A Babe"

MAN 1 & WOMAN 1

"Single Man Drought"

WOMEN

"Why? Cause I'm A Guy"

MEN

"Tear Jerk"

MAN 2 & WOMAN 2

"The Lasagna Incident"

MAN 1 & WOMAN 1

"I Will Be Loved Tonight"

WOMAN 1

"Hey, There Single Guy/Gal"

COMPANY

"Satisfaction Guaranteed"

COMPANY

"He Called Me"

COMPANY

"Scared Straight"

COMPANY

Cantata (reprise #1)

COMPANY

Wedding Vows

COMPANY

Perfect, Now Change

The *I Love You ...* cast rehearsing for this season's performance.



ACT II

Cantata (reprise #2)

MAN 1 & WOMAN 1

"Always A Bridesmaid"

WOMAN 2

"Whatever Happened"

MEN & WOMAN 1

"The Baby Song"

MAN 2

"The Marriage Tango"

MAN 1 & WOMAN 2

"Highway of Love"

COMPANY

"Waiting"

COMPANY

Cantata (reprise #3)

MAN 2 & WOMAN 1

"Shouldn't I Be Less In Love"

MAN 1 & WOMAN 2

"The Very First Dating Video of
Rose Ritz"

WOMAN 1

"Funerals Are For Dating"

MAN 2 & WOMAN 2

"I Can Live With That"

MAN 2 & WOMAN 2

Epilogue

COMPANY

Finale

COMPANY

Bows/Exit

COMPANY

* indicates members working under Actor's
Equity Association contracts in this production.
** indicates a performer enrolled in the AEA
membership candidate program.

There will be one fifteen minute intermission
between Acts I and II.



Joe DiPietro

AUTHOR & LYRICIST

Mr. DiPietro wrote the book and lyrics to the musical comedy hit *I Love You, You're Perfect, Now Change* (composer: Jimmy Roberts), the longest running musical revue in off-Broadway history, with productions staged in over 150 cities around the world. Joe is also the author of the plays *Over the River and Through the Woods*, *The Kiss at City Hall*, *The Virgin Weeps*, and the comic thriller *The Art of Murder* (winner of the 2000 Edgar Award). He wrote the book to the "new" Gershwin musical *Heaven on Earth* (world premiere: Goodspeed Opera House, 2001), a new adaptation of Rodgers & Hart's *Babes in Arms* (world premiere: Goodspeed Opera House, 2002) and a new adaptation of Rodgers & Hammerstein's *Allegro* (world premiere: Signature Theatre, 2004). In addition to his book and lyrics for the recent Off-Broadway musical *The Thing About Men* (composer: Jimmy Roberts),

DiPietro's other projects include book and lyrics for the rock & roll musical *Memphis* (composer: David Bryan, premiered regionally in late 2003), and the book for *All Shook Up*, an original musical comedy featuring the songs of Elvis Presley, which opened on Broadway in 2005. Joe is the recipient of the William Inge Theater Festival New Voices in American Theater Award, and has won the O'Neill National Playwright's Conference MacArthur Award for comic writing.

Jimmy Roberts

COMPOSER

Mr. Roberts composed the

music for the Off-Broadway hit, *I Love You, You're Perfect, Now Change*, the longest-running musical revue in history, with numerous productions staged in more than 150 cities around the world. His newest work is *The Thing About Men*, written with I Love You ... collaborator Joe DiPietro. His children's musical, *The Velveteen Rabbit*, produced by Theatreworks/USA, toured the US for the better part of a decade. His songs were featured in two other Off-Broadway revues: *A ... My Name is Still Alice* and *Pets*. A graduate of the Manhattan School of Music and the recipient of numerous awards from ASCAP, Mr. Roberts also

composed the theme music for the weekly PBS television show Theater Talk.

ARTISTIC STAFF

Terry Dobson

DIRECTOR

Mr. Dobson has been a member of Theatre Three's artistic staff since May 1980. He currently serves as the theatre's musical director and company manager. Terry directed (and accompanied) the longest running stage production in Dallas theater history—Theatre Three's production of *I Love You, You're Perfect, Now Change*. He also directed and accompanied many of the critically acclaimed Theatre Too productions. *Myths & Hymns*, *First Lady Suite*, *Grateful: The Songs of John Bucchino*, *Elegies: A Song Cycle* and last season's *The Big Bang* are among his favorites. Terry has performed with The Dallas Theater Center, Casa Mañana, Lyric Stage, Flower Mound Performing Arts



LEFT TO RIGHT:

Sonny Franks MAN #1,
Lindsey Holloway WOMAN #1,
Doug Jackson MAN #2,
and **Amy Mills** WOMAN #2

Theatre, and Theatre Arlington. Awards include a Leon Rabin Award for Outstanding Musical Direction for *Jon & Jen* and many Column Awards. Theatre Three appearances include *Sylvia*, *Nice People*, *Dancing to Good Country Music*, *Beyond Therapy*, *Death Defying Acts*, *God's Man in Texas*, *Dirty Blonde*, and most recently, *Glorious!*. *My Own Private Diva* won a DFW Theatre Critics Forum Award for Best New Play of 2006 and a Column Award for Outstanding New Work by a Local Playwright. Terry recently became a homeowner and spends most of his free time working on his condo and taking care of his new dog, Cooper.

Vonda Bowling

ASSISTANT MUSICAL DIRECTOR

Ms. Bowling is musical directing her first show in Theatre Too at Theatre Three. She recently musical directed *Little Shop of Horrors* at Flower Mound Performing Arts Theatre, assistant musical directed

Grease, *City of Angels*, and *Forever Plaid*, also at FMPAT. Vonda is on the voice faculty at John Horn High School in Mesquite where she has over 30 students in her studio. She is the co-founder, along with Mark Mullino, of Dallas Young Artists: a theatre company that targets high school and college age students. Vonda lives in Rowlett with her husband Jeffrey and their 2 sons, Harrison (7) and Mason (4). "Thanks to Terry for this exciting experience."

David Oppen

LIGHTING DESIGN

Mr. Oppen began his professional theatre career at Theatre Three thirty plus years ago as the resident scenic, lighting, and sound designer, hall swabber, and bathroom scourer. In the intervening years, David has designed for the touring music industry, corporate, and trade show presentations. He is currently the owner of the design company Aurora Event Group and technical director

at Tarrant County College Northwest Campus. He served as the lighting designer for *All About Bette*, the first show of Theatre Three's Theatre Too season.

Kerry Cole

AEA STAGE MANAGER

Ms. Cole's prior stage managing experiences include Theatre Three's productions of *Democracy* and *The Odd Couple*, Shakespeare Festival of Dallas, Plano Repertory Theatre and Wayside Theater in Virginia, where she served as Resident Equity Stage Manager. In addition to stage management, Ms. Cole's production history includes acting, directing, producing and writing credits. She most recently directed Theatre Three's production of *Talking Pictures* and Theatre Too's production of *Season's Greetings*. She currently teaches theatre at both the University of North Texas and Richland College and is represented by the Core Talent Agency.



CLOCKWISE FROM FAR LEFT:

The original cast of the record-breaking show: **Greg Dulcie** MAN #1, **Ashley Wood** MAN #2, **Carrie Slaughter** WOMAN #2, and **Linda Leonard** WOMAN #1

CAST

Sonny Franks MAN #1

Mr. Franks was born and raised in Mesquite, Texas, a stone's throw from its world famous rodeo. He only recently, however, truly learned to ride a horse when he signed on with Medieval Times Dinner and Tournament here in Dallas, where he can be seen as "the king"—no, it isn't an Elvis impersonation. Sonny has been in many theater productions around Dallas and Fort Worth throughout the years, while also finding time to tour the world with the famous folk group The New Christy Minstrels, spend two years as the host/MC of *Country Tonite* in Branson, Missouri, and appear in upwards of fifty television commercials, films and TV series, the most recent of which is Fox Television's *Prison Break*. Also a songwriter and musician, he is proud to have written and produced a number of successful record-

ings, including "All Grown Up ... So Far"" and "More than Halfway" with renowned local diva Julie Johnson. Although being a father to Hailey, his fifteen-year-old daughter, is his most important role, he is back in the "basement," Theatre Too!, playing what many in the industry still refer to as "Ashley's role" in this incarnation of *I Love You, You're Perfect, Now Change*.

Lindsey Holloway WOMAN #1

Ms. Holloway returns to Theatre Three with this production. Audiences at Theatre Too may remember Lindsey in the roles of Evelyn, Dory, and K.T. in *Merrily We Roll Along*, as well as Faith Crombie in *I'll Leave It to You* on the Mainstage of Theatre Three. Other credits include Helena in *A Midsummer Night's Dream: The Musical* at Shakespeare Festival of Dallas, Alaura in *Carla/City of Angels* at Flower Mound Performing Arts Theatre, Fermina in *Man*

of La Mancha at Water Tower Theatre, Jeanne in *State Fair* at It's About Time Productions, Nellie Connally in the world premiere of *The Winner* at Lyric Stage, and Fraulein Kostin in *Cabaret* at Water Tower Theatre (Leon Rabin Award). "To my beautiful friends and family, who make my life so wonderful—"I love you, you're perfect, never change!"

Doug Jackson MAN #2

Since his debut at Dallas Repertory Theatre in 1972, Mr. Jackson has been acting on Metroplex stages, in national tours, and in movies and television. The Dallas Theater Center, Dallas Children's Theater, Stage West, Lyric Stage, New Arts, Shakespeare Festival of Dallas, Moving Target, Casa Mañana, the Majestic Theatre, the Bass Hall and others have presented his work, but it's Theatre Three he calls home. Doug has 400 performances of *I Love You, You're Perfect, Now Change* to

BEHIND THE SCENES:

When the box office is extraordinarily busy with a flood of phone calls and emails requesting tickets, employees often remark, "It's an *I Love You* day." *I Love You, You're Perfect, Now Change* is the most popular show in Theatre Three's forty-seven year history and during its continuous three year run in Theatre Too, it became the longest-running show in Dallas theatre history. This musical revue began its record-breaking run in June of 2000. After its initial six week run as the first show of the 2000–2001 season, the show transferred to a newly renovated Theatre Too to satisfy popular demand. Before it closed in July of 2003, over 50,000 people saw the show, 15 understudies were added to give the original cast an occasional break, 5 pianists accompanied the show and one of the show's creators, Joe DiPietro, visited Dallas to see Theatre Three's production. The show has earned over \$1 million for the theatre and many patrons proudly proclaim how many times they have seen the show: 5 times, 8 times, even 11 times. Every time Theatre Three brings back *I Love You, You're Perfect, Now Change* for special engagements, staff, cast members, and the show's director, Terry Dobson, are happy to see familiar faces and to welcome new friends, who seven years after the opening of the show, are just now discovering this wonderful phenomenon.

his credit, including part of the original run on the main stage and the entire first year in Theatre Too. Upstairs this season he was Alfred Doolittle in *Pygmalion* and last season Oscar Madison in *The Odd Couple*. Other favorite roles here include Seymour in *Little Shop of Horrors*, Coach Don in *Rounding Third*, Peachum in *The Threepenny Opera* and Ed Kleban in *A Class Act*. What is home without family? Doug is thrilled to once again be

performing with his "leading lady" of 24 years, Amy Mills. Daughter Emily was seen in *Talking Pictures* and daughter Abigail joined mom and dad in *The Imaginary Invalid*; both attend the Arts Magnet High School and appeared in Doug's T3 directorial debut, *Children of Eden*. Doug is a proud member of Actor's Equity Association and Aftra/SAG, represented by The Campbell Agency. He is eternally grateful to Jac and Terry for all the wonderful

opportunities over the years and is honored to be a part of this production.

Amy Mills WOMAN #2

Ms. Mills is happy to be returning to *I Love You ...* after a year of no blind or funeral dating! She most recently appeared as Mrs. Fezziwig in Casa Mañana's production of *A Christmas Carol* at the Bass Hall. Favorite roles include Mary in *Merrily We Roll Along*, Alice in *Titanic*, Zora in *Inspecting Carol*, Toinette in *The Imaginary Invalid*, Prudie Cupp in *Pump Boys and Dinettes*, Sarah in *Spinning Into Butter*, and The Baker's Wife in *Into the Woods*. During the day, she finds herself on staff at Theatre Three or teaching musical theatre classes at The Dallas Children's Theater. At night, she finds herself in Oak Cliff with three dogs, two cats, a husband: actor Doug Jackson, and their two beautiful daughters: Emily and Abigail.

SUPPORTERS

Theatre Three is supported by its Board of Directors, by subscribers, by funds from the **City of Dallas Office of Cultural Affairs**, and **The Texas Commission on the Arts**. Supporters also include **TACA**. Major corporate sponsors include **The Dallas Morning News** and **WFAA Channel 8**. Season corporate sponsors include **The Fairmont Dallas** and **Akin Gump Hauer & Feld LLP**.

THE PHOENIX CAMPAIGN

Theatre Three's 2007–2008 **Phoenix Campaign** is underway. This year's goal is \$125,000. You can donate by filling out the donation form in this playbill or online at www.theatre3dallas.com.

PRODUCER'S COUNCIL \$1000 or more

Dr. & Mrs. Kenneth Altschuler, Mr. Bill Bond, Toni & Norman Brinker, George & Jo Ann Caruth, J. Roland & Virginia Dykes, Stan Graner & Jim McBride, Gary & Caroline Grubbs, Harriet Halsell, Emily Jefferson, Mr. David G. Luther Jr., Mr. & Mrs. Tom McCasland, Jr., In Memory of P.L. Moore, Shanna L. Nugent, Mr. & Mrs. Ross Perot, Deedie Rose, Enika Schulze, Peggy, Don, and Lynn Townsley, Kathy & John Ward, Dr. & Mrs. Seaborn B. Weathers, Laura & Charlie Weems, Chris & Lisa-Gabrielle Westfall, The Jeff & Bonnie Whitman Charitable Foundation

DIRECTOR'S COUNCIL \$500–\$999

Ida Jane & Doug Bailey, Mrs. Tom Barr (Pat), Lawrence N. & Elizabeth C.S. Barron, James Lee Blackwell, Mason Brown Family Foundation, Inc., Dr. Kendall & Mona Cochran, Brig. Gen. & Mrs. H.J. Dalton, Jr., Charron & Peter Denker, Dr. & Mrs. J.B. Doak, Bobby & Anne Fincher, Ms. Sarah M. Hansen, Mrs. Jo Kurth Jagoda, Sonja J. McGill, Patsy Yung Micale, Paul Coggins & Regina Montoya, June S. Morgan, George & Judy Nassif, Arlene & Louis Navias, Dean Corbitt & Fred Penn, John McCafferty & Lorraine Sear, Jerry Setliff & Joyia Elinson, Miss Jeanne F. Shelby, Michael Skipper, Marvin & Margaret Sloman, David & Elaine Smith, Brenda & Nelson Spencer, Ann Stuart, Frank Sulzbach, Dr. M. Sunderland, Bill & Diana Winkelmann, Charles W. Yates

IN MEMORIAM

Contributions have been made in memory of, or from the estates of:

Sam & Shirley Catter, Margaret Hatcher Coit, Bill Dallas, William T. Dobson, Scott Everheart, Dwain Fail, Javad Fiuzat, MD, Paula Goodlet, Oliver Hailey, Lloyd W. Kitchens Jr., MD, Anne Weeks Jackson, Jim Jackson, Lynn Mathis, Polly Lou McAdams Moore, Masha Porte, Carolyn Ryburn, Frank Rey, Mary Blanche Scales, Charlotte E. Schumacher, Lynn Townsley, May Tweed, Audrey B. Waite, Evelyn Wilke, Martha Roselyn Wright, Norma Young

ACTOR'S BENEFACTORS \$250–\$499

Dr. & Mrs. W. Robert Beavers, KEMB, Florence & Lee Buehrer, Carol L. Croy, Kathleen Cunningham & Randy Willis, Dede Duson, Robert & Carol Eberhart, Joan Eschrich, David M. Forsythe, Dr. Ray Fowler, Lynn Frank, Richard & Arlette Galland, Dr. & Mrs. Leonard & Pauline Graivier, Ed & LeAnn Greer, Bob & Marilyn Halpin, Mr. Alex Hamerman, Mr. & Mrs. Jack W. Hawkins, Charles & Patricia Hayward, Christiane Hepfer, Ms. Wanda J. Hill, Bill & Elaine Johnson, Louise W. Kahn Endowment Fund, Mr. & Mrs. Patrick Kelly, Steve Krant, Chuck & Lolisa Laenger, James A. Lathim, Jr., Jerome & Brenda Levy, Wilson & Gwyn Mason, Hilda S. McLaughlin, Casey & Megan McManemin, Patricia B. Meadows, Scot & Eileen Milvenan, Marion & Stewart Mitchell, Yvonne Perkins, Wayne & Linda Rich, Rick Russell, Gary & Genie Short, Betty & John Silander, Helen M. Sindermann, Martha & Robert Sloan, Evelyn Smith, Don & Norma Stone, Ms. Jean Stoner, Leland Turner, Dan Van Pelt, Carolyn Wickwire, Bill & Julie Wilkinson, Mr. & Mrs. John Wood

AUTHOR'S BENEFACTORS \$125–\$249

Barbara Alexander, Ruth Andres, Helen & Paul Barton, Rosanne Bell, Ms. Emily Beyette, James & Arlene Booth, Osborn Levert Caldwell, T.A. & Susan Carnell, Bill & Fran Carter, Patti & Mack Castleberry, Vladi & Judy Catto, Kay Champagne, Cory Coons, Betty & Tom Cox, Michael L. Dailey, Amon & Pauline Denur, Gene & Polly Diskey, James

& Kathryn Erickson, Laura V. Estrada, Jeanne & Sanford Fagadau, Richard L. & Kay Fleming, Dawn Fowler, Gary & Edith Fritzsche, John & Frances Garrett, Eileen & Joel B. Goldsteen, Bob & Barbara Goodman, Philip & Gloria Gray, Elaina & Gary Gross, Martha Heimberg & Ron Sekerak, Robert & Barbara Herbison, Matt C. Jansha, Dr. Sondra Kaufman, Barbara Kemp, Milton & Ann Killen, Peggy Ladenberger, Ph.D., Bob & Patsy Magruder, France McCoy, Myrna & John McCully, Gordon McMillan, Leland & Mary Mebine, Charlie & Anne Moon, Al Moore, Louis & Betty Moore, Ms. Nan Moser, Bernice Catherine Moss, Erika & Joel Nannis, Mal & Linda Noone, Larry & Carol Peters, Catherine Ritchie, Bob & Kathleen Rortvedt, Shirley G Rowley, Dick & Rita Sanderson, Laura B. Saunders, Rex A. Sebastian, Jean & Rudy Seward, Tom & Phoebe Shaw, Mr. Carroll Staton, Vivian Annette Stewart, Gene & Marge Stockton, John W. Sutherland, Dr. & Mrs. W.A.P. Thompson Jr., Mr. & Mrs. B T Vincent, Jr., Louise C. Wells, Glenda Kemple, Jenna Worthen

BACKSTAGE BENEFACTORS \$50–\$124

Ms. Janet Bade, Ziona & Edwin Balaban, Jane Barkley, Catherine B. Bass, John P. Bell, Jr., Carl & Jeanette Benson, Mr. & Mrs. Duncan Boeckman, Mr. & Mrs. Walter & Sophia Boettcher, Mr. & Mrs. Robert Boyer, Doris Cheshier, Kim Cheshier, Billie Maxine Cook, John & Zonneke Cross, Ms. Lee B. Cullum, Mr. & Mrs. Robert Culmer, R M Deininger, Gwen Dixie, John & Harryette Ehrhardt, Colleen

Flickinger, Les Geiter, Doug & Linda Gilpin, Mr. Fred Grinnell, Bob & Janet Hadeler, Mark & Lanell Hadley, Janet & Earl Hale, Dr. & Mrs. Arvel Haley, Gaylord & Jacqueline Hall, Mark & Lynda Hamilton, Mrs. Anne Yeager Hansen, Mr. Alan Harders, Elsie M. Harris, Ennis & Donna Hill, John & Rusty Jagggers, Mr. & Mrs. Eugene Jericho, Dr. Warren C. & Phyllis Johnson, Robert A. & Mary B. Jones, Dan & Susan Kasten, Charlotte Kelly, Lucy & Roger King, Gail G. Klaveness, Elaine Klobe, Joyce & Howard Korn, Mary Kretzinger, Mrs. Peggy Learner, Jack & Jo Ann Leavitt, Mr. Lloyd B. Lewins, Glenn & Virginia Linden, Dr. & Mrs. S.O. Livingston, Mr. & Mrs. Scott Ludrick, Cheryl & Glen Lumpkin, Dr. & Mrs. Richard L. Mabry, Barbara Materka, Maurice & Wanda McGill, Ms. Marcia J. McGoey, Ms. Peggy J. Meade-Cohen, Ms. Joan Mirabal, Jim & Pat Mitchell, Ms. Melissa A Mitchell, Ms. Jo Ann Murray, Carolyn & Stewart Musket, Mr. & Mrs. Rudy Norris, Sue Prather, In Memory of Ramon Ford, Dr. Paul Radman, Jeanne Rasco, Dr. & Mrs. Peter C. Ray, Mr. & Mrs. Richard A. Reed, Ann T. Reeves, Durel & Barbara Reid, Marsh & Patricia Rice, Dr. & Mrs. Murray Rice, Martin B. & Joan Roberts, Elliott & Phyllis Ross, Mr. & Mrs. Robert Rothstein, Mr. Glenn Samford, Ms. Ann L. Schoeps, Drs. Richard & Roxanne Scott, Donald W. Seldin, Freda Gail Stern, Nancy Strickland, Barbara Sudweeks, Mr. & Mrs. John B. Tolle, Mr. Bruce Toplek, Barbara S. Turner, Frank Turner, Ms. Pamela Venne, Joe & Helen Walker, Thomas E. & Charlotte Walker, Betty J. Ward, PhD, Don & Sally Weatherford, Kay & Harry Weaver, Virginia Whitehill, Mr. Richard Wills, Ken & Anita Wrobel





YES! YES! YES!

List my name in support of **The Phoenix Campaign**, Theatre Three's annual drive for operating support. Membership levels are as follows:

PRODUCER'S COUNCIL

Gifts of \$1,000 or more to support production costs for sets, lights, and designers

DIRECTOR'S COUNCIL

Gifts of \$500–\$999 to support outreach, audience development, and artistic administration

ACTOR'S BENEFACTORS

Gifts of \$250–\$499 to support salaries and benefits for the residential acting company

AUTHOR'S BENEFACTORS

Gifts of \$125–\$249 to support royalties to composers, lyricists, and playwrights

BACKSTAGE BENEFACTORS

Gifts of \$50–\$124 to support stipends for Theatre Three's intern staff

DONOR INFORMATION

name

address

city

state zip code

e-mail

patron number (if known)

name (as you wish it to appear in the program)
☐ or check here to remain anonymous

PAYMENT INFORMATION

\$

total contribution

☐ My check is enclosed for the full amount or I wish to charge my donation to:
☐ Visa ☐ Discover ☐ MC ☐ AMEX

credit card number

expiration date

Bring or mail to:

Theatre Three, Inc.
 2800 Routh Street, Suite 168
 Dallas, Texas 75201

DEAR PLAYGOER,

The Phoenix Fund is perfectly named. A mythic bird rising from the ashes is the perfect symbol for this fund which put us on our feet again after a 1991 financial stumble—well, no, not a stumble ... more like a plummet from the Empire State Building—which caused the shut down of the theatre.

We didn't stay closed for long once we'd devised a *Plan B*, the major part of which was appealing to our playgoers for financial support, an appeal we named "**The Phoenix Fund**." (See elsewhere in this playbill for those who've already donated this season.)

A couple of seasons ago a transformer blew out the power to the Quadrangle and adjacent lights in the surrounding block. It happened when we were about four-fifths of the way through a performance, and I had to send the audience home without seeing the end of the play.

Since that scary afternoon, I've had a recurring nightmare that **The Phoenix Fund** fails to meet its goal. In this bad dream, the power is turned off for lack of payment, and I have to send the audience away forever. *I'd like to ditch that recurring nightmare in favor of my dream: I want there to forever be an audience and players gathered here for mutual enlightenment and pleasure. Your gift to Theatre Three keeps my nightmare just an aberration—replacing it with my dream.*

Please give generously and allow us the honor of listing your name in our support.

Sincerely,

Jac Alder
 EXECUTIVE PRODUCER-DIRECTOR



The Power of Harmony



Children will Listen

First Annual Byrna Funk Holiday Concert Series

Directed by Dr. Jonathan Palant with Special Guests

Richardson All-District Elementary Choir

The Majestic Theatre

December 7th & 8th – 7:30 p.m.

December 9th – 2:00 p.m. & 7:30 p.m.

Special Matinee Performance

December 8th – 2:00 p.m.

A One – Hour Performance Benefiting the
 Crystal Charity Ball ARCH Center at



www.turtlecreek.org

(877) SING – TCC

or call Ticket Master (214) 373 – 8000

Children's Benefit Matinee underwriting by the Aetna Foundation



Bruce Ogletree Photography www.bruceogletree.com

TEXAS WOMAN'S UNIVERSITY

DENTON ■ DALLAS ■ HOUSTON

Dallas Community Leaders Join TWU Board of Regents



George R. Schrader, left, of Schrader & Cline, L.L.C. and owner of Schrader Investment Company and P. Mike McCullough, senior partner with Thompson & Knight L.L.P.

Texas Woman's University is pleased to welcome Mr. George R. Schrader and Mr. P. Mike McCullough to its board of regents. Also serving on the board are these distinguished Dallas professional and civic leaders:

- ▶ **Mr. Harry L. Crumpacker**, former chairman and CEO, Morrison Milling Company; chair of the board
- ▶ **Mrs. Virginia Chandler Dykes**, former director of the Occupational and Recreational Therapy department at Baylor University Medical Center; co-founded the Virginia Chandler Dykes Leadership Award with the TWU School of Occupational Therapy
- ▶ **Ms. Tegwin Ann Pulley**, vice president of workforce development, diversity and work life strategies, Texas Instruments; vice chair of the board
- ▶ **Ms. Sharon Venable**, chief creative officer/VP special initiatives, Greater Dallas Chamber

Their leadership will be invaluable in advancing TWU's mission as a dynamic university whose graduates and programs impact the lives of the citizens of Dallas, the state and the nation.

**www.twu.edu
940-898-2000**

**Connecting EXCELLENCE
To The REAL WORLD**