

# Adding Machine

## A MUSICAL

Composed by  
Joshua Schmidt

Libretto by  
Jason Loewith and  
Joshua Schmidt

Based on the play  
*The Adding Machine*  
by Elmer Rice



SEP **28** THRU  
OCT **22** 2017

    
#killyourboss

# Classical Music and the Arts for North Texas

Classical  
**101**  
WRR 101.1 fm  
wrr101.com



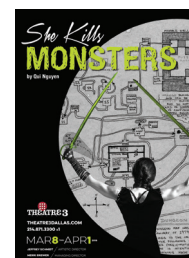
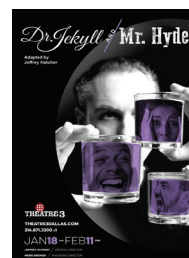
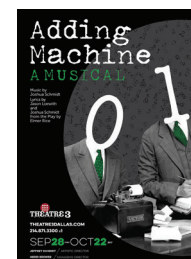
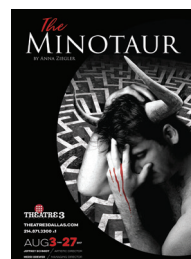
For almost a century, WRR has been the voice of  
great music, theater, dance and the visual arts  
for all of North Texas.

Tune in today: 101.1 FM, HD-1  
and streaming online at wrr101.com

**THEATRE 3**  
DALLAS

JEFFREY SCHMIDT / ARTISTIC DIRECTOR  
MERRI BREWER / MANAGING DIRECTOR

## 2017-18 SEASON



### SEASON TICKETS ON SALE NOW!

**GET TICKETS**  
214.871.3300 x1  
**THEATRE3DALLAS.COM**

### ADDING MACHINE: A MUSICAL IS MADE POSSIBLE BY...

Theatre Three is supported by its Board of Directors, by subscribers, by funds from the City of Dallas Office of Cultural Affairs, The Texas Commission on the Arts, TACA, Dallas Tourism Public Improvement District, and The Shubert Foundation. This project is supported in part by an award from the National Endowment for the Arts. Flowers provided by Whole Foods Market. A major contribution from the estate of Marlene Webb, a longtime subscriber, has established the Theatre Three Endowment Fund in support of the building and its equipment.

**TACA**  
CELEBRATING 50 YEARS  
of TRANSFORMING  
LIVES THROUGH THE ARTS

**Office of Cultural Affairs**  
CITY OF DALLAS

**THE SHUBERT**  
FOUNDATION INC.

**Texas**  
Commission  
on the Arts

**DALLAS**  
Tourism Public Improvement District

**ART WORKS.**

**National**  
Endowment  
for the Arts  
arts.gov

## T3 PEOPLE

### BOARD OF DIRECTORS

CHAIR Scott T. Williams

### BOARD MEMBERS

Chad Barton, Marion L. Brockette, Jr.,  
Suzanne Burkhead, Raymond J. Clark,  
Mike Cluff, Sid Curtis, Karen Davis,  
Laura V. Estrada, Sally Hansen, David G. Luther, Jr.,  
Stacy E. Marshall, Chris Rajczi, Margie Reese,  
Dana W. Rigg, Elizabeth Rivera, Rod Wilson  
OCA LIAISON Linda Blase  
ADVISORY BOARD John Strauss  
HONORARY BOARD MEMBERS  
Virginia Dykes, Gary W. Grubbs,  
John & Bonnie Strauss

### ADMINISTRATION

ARTISTIC DIRECTOR Jeffrey Schmidt  
MANAGING DIRECTOR Merri Brewer  
DIRECTOR OF STRATEGIC MARKETING  
AND DATA ANALYSIS Kat Edwards  
PUBLICITY, MARKETING, CREATIVE  
& PLAYBILL DESIGN  
SoloShoe Communications, LLC  
CPA Ron King  
BOOKKEEPER Linda Harris  
HOUSEKEEPING Kevin Spurrier

### PRODUCTION

COMPANY MANAGER Sarah Barnes  
TECHNICAL DIRECTOR John Ruegsegger  
ASSISTANT TECHNICAL DIRECTOR Seth Monhollon  
SCENIC ARTIST David Walsh  
APPRENTICE STAFF  
Lyn Alessandra, Emma VanVooren

### CUSTOMER SERVICE

HOUSE MANAGER Angelica Rollins  
BOX OFFICE AGENTS  
Tony Banda, Bennett Chapple, Jazzay Jabbar,  
Hannah Law, Samantha Grace, Isa Flores

## ON OTHER STAGES

### SHAKESPEARE DALLAS

SEP 20 - OCT 15 *Titus Andronicus*

### DALLAS CHILDREN'S THEATER

SEP 22 - OCT 29 *Goosebumps the Musical*

### DALLAS THEATER CENTER

SEP 23 - OCT 22 *Hair*

### POCKET SANDWICH THEATRE

SEP 29 - NOV 11 *The Strange Case of  
Dr. Jekyll & Mr. Hyde*

### WINGSPAN THEATRE COMPANY

OCT 5 - 21 *Occupant*

### STAGE WEST

OCT 12 - NOV 12 *Life Sucks*

### WATERTOWER THEATRE

OCT 13 - NOV 5 *Pride and Prejudice*

### CIRCLE THEATRE

OCT 19 - NOV 18 *Application Pending*

### NEXT UP DOWNSTAIRS IN THEATRE TOO



OCT 26 - NOV 19 *Lear*  
Adapted by Katy Tye  
Directed by Jeffrey Colangelo  
Prism Movement Theater

### ARTIST ADVISORY BOARD

Maryam Obaidullah Baig, Dante Flores,  
Gretchen Elizabeth Smith, Montgomery Sutton,  
vickie washington

This playbill is a publication of Theatre Three, Inc. in  
support of **Adding Machine: A Musical** (the second show  
of the 2017-18 season) on the Norma Young Arena Stage.

THEATRE THREE IS A PROUD  
ASSOCIATE MEMBER OF



National  
New Play  
Network

OPENING NIGHT  
SPONSOR



Theatre Three has Hearing Assistance devices which may be checked out without charge from the box office. These devices enhance the performance experience for audience members with any degree of hearing limitation. The box office personnel can provide you with the devices either before the show or at intermission. Theatre Three's staff and board are most grateful to donors Carolyn Wickwire and Dennis West, who provided the grant that allows us to offer this enhancement to our patrons.



In partnership with the Deaf Action Center we are proud to bring you  
Deaf Accessible performances!

For information and show times of our BEI/RID certified interpreted performances please visit  
[www.theatre3dallas.com](http://www.theatre3dallas.com) Patrons wishing to access the signed performances are requested  
to call the box office manager, Sarah Barnes at 214-871-3300 x 116 or contact her via e-mail  
at [sarah.barnes@theatre3dallas.com](mailto:sarah.barnes@theatre3dallas.com).

## THEATRE THREE'S 2017 - 2018 SEASON



# Adding Machine: A Musical

Composed by Joshua Schmidt  
Libretto by Jason Loewith and Joshua Schmidt  
Based on the play *The Adding Machine* by Elmer Rice

THE  
NORMA  
YOUNG  
ARENA  
STAGE

### ARTISTIC STAFF

DIRECTOR  
**Blake Hackler**  
ASSISTANT DIRECTOR  
**Debbie Crawford**  
MUSICAL DIRECTOR  
**Mark Mullino**  
CHOREOGRAPHER  
**Danielle Georgiou**  
COSTUME DESIGN  
**Amanda Capshaw**  
**O'Donoghue**  
LIGHTING DESIGN  
**Aaron Johansen**  
SCENIC DESIGN  
**Jocelyn Girigorie**  
SOUND DESIGNER  
**John Flores**

### CAST

MR. ZERO  
**Thomas Ward\***  
MRS. ZERO  
**Jeni Roller\*\***  
DAISY DeVORE  
**Allison Pistorius\***  
SHRDLU  
**Brandon McInnis\*\***  
THE BOSS  
**John Daniel Pszyk**  
ENSEMBLE  
**James Chandler\***  
**Angela Davis\*\***  
**Kathryn Taylor Rose\*\***  
**Ashley Wood\***

### BAND

PIANO  
**Mark Mullino**  
KEYBOARD  
**Isaac Leaverton**  
PERCUSSION  
**Jay Majernik**

\* indicates members working under Actors' Equity  
Association contracts in this production.

\*\* indicates a performer enrolled in the AEA  
membership candidate program.

Please silence your cell phones and all electronic devices.

THE VIDEOTAPING OR MAKING OF ELECTRONIC OR OTHER AUDIO AND/OR VISUAL  
RECORDINGS OF THIS PRODUCTION OR DISTRIBUTING RECORDINGS ON ANY MEDIUM,  
INCLUDING THE INTERNET, IS STRICTLY PROHIBITED, A VIOLATION OF THE AUTHOR'S RIGHTS  
AND ACTIONABLE UNDER UNITED STATES COPYRIGHT LAW. FOR MORE INFORMATION, PLEASE  
VISIT: [WWW.SAMUELFRENCH.COM/WHITEPAPER](http://WWW.SAMUELFRENCH.COM/WHITEPAPER)



*never trust a round pizza!*



## ■ DIRECTOR'S NOTES

*The Adding Machine* is a justly famous play. And the musical you're about to see translates the nightmarish atmosphere of Elmer Rice's original script into an abrasive, funny, and sometimes beautiful sonic dream. I was thrilled when Theatre Three asked me to work on it last spring. I read the script in the middle of other projects, listened to the score, cast some wonderfully talented actors, met with my designers, and then promptly left town for a few months. Sometime in early August I picked up the script again and really began to dig in. And...

I got uncomfortable really, really fast. Why were we doing this? Why did I say yes? Why this play now? At this moment in time? A play about white rage. A white man's rage. A white man's disenfranchisement. A white man who is racist and misogynistic and... and... and... Do we really need, any of us, to give any more time to this kind of story when the world aches for so many other narratives? Do I want to be complicit in telling this story?

No. Except...

I tell my students an acting education is a human education. An education in seeing through someone's eyes with curiosity instead of judgment, and in that space of seeing, a

kind of understanding can happen. And if I understand someone, then I can talk to them. And if I can talk to them... then anything might be possible. An acting education is an education in empathy. So... practice what I preach.

So then...

What happens to people without agency? Without culture? Without a voice? What happens when the capitalist machine we all take part in suddenly says, "You're no longer needed. Thanks for your service. Get out."

Lives grow small. Borders shrink. Fear proliferates. Hatred grows.

What happens is... this moment. Right now. That's what happens.

Zero is abhorrent. He says and does terrible things. We don't have to like him. Elmer Rice didn't intend for you to. But maybe if we can understand the Zeros of this world, we can reach out to him, and talk. And then, maybe... who knows.

We shouldn't be the ones who have to reach out. But I don't think we have a choice.

*Blake Hackler, Director*

## WE'RE HERE FOR EVERY STAGE.

Frost is proud to support Theatre Three.  
And we'd be proud to help you at all stages of your financial life too.

**frostbank.com**

Uptown Financial Center  
2950 N Harwood, Suite 100  
Dallas, TX 75201  
(214) 515-4900

MEMBER FDIC



## ■ ABOUT THE PLAYWRIGHT / BIOGRAPHIES



# Adding Machine: A Musical

Composed by Joshua Schmidt, Libretto by Jason Loewith and Joshua Schmidt  
Based on the play *The Adding Machine* by Elmer Rice

### About the Playwrights

#### Jason Loewith

produced and co-wrote the world premiere of *Adding Machine: A Musical*, winning Lucille Lortel and Outer Critics Circle Awards for Best New Musical of the Season, as well as four OBIE Awards for direction, design, and performance; and is published by Samuel French. He is currently the Artistic Director of the Olney Theatre Center, where he recently directed *Sweeney Todd*, *Carousel*, *Avenue Q*, *How to Succeed in Business...*, and the world premiere of Steven Dietz's *Rancho Mirage*. Other recent work includes the world premiere of Janece Shaffer's *Broke* (Alliance Theatre, Atlanta), and a dozen plays for Chicago's Next Theatre Company, where he served as artistic director from 2002-08. Before joining Olney Theatre Center, Jason proudly served four years as Executive Director of the National New Play Network. His book *The Director's Voice, Volume 2* was published by TCG in 2012, and his most recent play, *Big Nate: The Musical* written with Chris Youstra, was published by Samuel French in 2016.

#### Elmer Rice

(born Sept. 28, 1892, New York City—died May 8, 1967, Southampton, Hampshire, Eng.) was an American playwright, director, and novelist noted for his innovative and polemical plays. Rice graduated from

the New York Law School in 1912 but soon turned to writing plays. His first work, the melodramatic *On Trial* (1914), was the first play to employ on stage the motion-picture technique of flashbacks, in this case to present the recollections of witnesses at a trial. In *The Adding Machine* (1923) Rice adapted techniques from German Expressionist theatre to depict the dehumanization of man in the 20th century. His most important play, *Street Scene* (1929), was a starkly realistic tragedy set outside a New York City slum tenement building. The play won a Pulitzer Prize and was adapted into a highly popular musical (1947) with lyrics by Langston Hughes and music by Kurt Weill. *Counsellor-at-Law* (1931) was a rather critical look at the legal profession. In *We, the People* (1933), *Judgment Day* (1934), and several other polemical plays of the 1930s, Rice treated the evils of Nazism, the poverty of the Great Depression, and racism. He continued to write for the stage after 1945, but without much acclaim. Rice was active in the WPA Federal Theatre Project for a short time in the mid-1930s. He also championed the American Civil Liberties Union and the cause of free speech, and in the 1950s he was an opponent of U.S. Sen. Joseph R. McCarthy. Rice also wrote several novels and an autobiography, *Minority Report* (1963).

#### Joshua Schmidt

is the award-winning composer of *Adding Machine* (Lucille Lortel Award - Best Musical; Outer Critics Circle Award - Best Score & Best Off-Broadway Musical; Joseph Jefferson Award - Best Musical; as well as 4 Obie Awards, 9 Drama Desk nominations, and Drama League nomination for Best Musical). *Adding Machine* was also heralded as one of the ten best events of 2008 in *The New York Times*, *Wall Street Journal*, *Time Out NY* and *Chicago Tribune*. Recent credits include the critically acclaimed *A Minister's Wife* (Lincoln Center Theatre; Writer's Theatre – Best Musical Jeff Award), *Whida Peru* (Primary Stages/59E59) and *Gift of the Magi* (American Players). Incidental scores include *When the Rain Stops Falling* (Lincoln Center), *Fifty Words* (MCC), *Works and Process* (Guggenheim Museum), and *Music from Almost Yesterday* (Barrow Street). Mr. Schmidt is currently working on musical commissions for Steppenwolf Theatre Company and Playwrights Horizons. Mr. Schmidt is also an accomplished sound composer/designer whose Broadway & Off-Broadway credits include *House of Blue Leaves*, *Brighton Beach Memoirs* (with Fitz Patton), *Crime and Punishment* (59E59), and many others. Regionally, he has composed/ designed for Steppenwolf Theatre Company, South



## ■ CAST AND CREW BIOGRAPHIES

Coast Repertory, Stratford Festival, The Kennedy Center, Seattle Repertory Theatre, Cleveland Playhouse, Ford's Theatre, Alley Theatre, and Milwaukee Rep. Mr. Schmidt is a 2012 Sundance Theatre Lab UCross artist, and a recipient of the American Musical Voices Project honoree grant and Graduate of the Decade Award (UW-Milwaukee). *Adding Machine* and *A Minister's Wife* both have original cast recordings on PS Classics. He is a graduate of the University of Wisconsin-Milwaukee and is a guest lecturer at Harvard, Suffolk, University of Mississippi-Oxford, Illinois-Urbana/Champaign and Wisconsin-Madison.

### Artistic Staff Biographies

#### Blake Hackler

**DIRECTOR**  
has directed locally at Undermain Theatre, Second Thought, Theatre Three and SMU. As an actor, Blake has appeared in productions on Broadway, Off-Broadway and in regional theatres throughout the country as well as in TV and film. He currently holds faculty positions at Yale University and Southern Methodist University. His plays and musicals have been seen in Dallas, Chicago, and New York. Most recently, his play *The Necessities* received its world premiere with Second Thought Theatre in Dallas, Texas. He is a member of the esteemed BMI/Lehman Engel

Musical Theatre Writing Program, is the recipient of the Harrington Award for Excellence in Musical Theatre Writing as well as a Dramatist Guild Intensive grant. He holds an MFA from the Yale School of Drama and is a Fulbright Senior Scholar.

#### Debbie Crawford

**ASSISTANT DIRECTOR**  
is a local director, playwright and actor who received her Bachelor of Fine Arts from Hardin-Simmons University. Debbie has most recently worked with local companies including Theatre Three, Danielle Georgiou Dance Group, Shakespeare in the Bar & Prism Co. Movement Theatre. Debbie also performed internationally at the Edinburgh Fringe Festival in 2012. In addition to her positions as a creative, she spends her days in the realm of arts administration as the Marketing Coordinator at Dallas Theater Center (2017 Regional Theatre Tony Award Winner). Prior to this, Debbie served in other admin roles at theatres including Undermain Theatre and Dallas Children's Theater. As a Dallas newcomer, she is so grateful for how welcoming and supportive the DFW theatre community has been to her. Debbie sends many thanks to her dear friend and mentor, Dean Nolen.

#### Mark Mullino

**MUSICAL DIRECTOR**  
has worked extensively throughout the Metroplex and the United States as a musical director and actor. Locally, Mark has directed/musical directed/conducted at WaterTower Theater, Dallas Theater Center, Uptown Players, Plano Repertory Theater, Lyric Stage, Labyrinth Theater, Collin Theater Center, Flower Mound Performing Arts Theater, PFamily Arts, Our Productions, and Theater Arlington. Mark has received numerous Column Awards and Leon Rabin Awards and nominations. In addition to musical directing and acting, Mark plays piano for the weekly Cabaret show "Mama's Party", teaches musical theater at KD College and Collin College, maintains a private studio, and is an artist. Mark is the President and co-founder of Dallas Young Artists. Mark received his Bachelors in Music from Hardin-Simmons University.

#### Danielle Georgiou

**CHOREOGRAPHER**  
is a choreographer and performance artist from Dallas, TX. In 2011, she began a performance project called the Danielle Georgiou Dance Group and has presented her original works of dance theatre throughout Texas, Oklahoma, California, and Oregon. Her video work has shown nationally in Texas, New York, and Florida, and internationally in Scotland and Germany. Georgiou has worked with local theatre companies,

Undermain Theatre, Kitchen Dog Theater, Ochre House Theater, Echo Theatre, and Dead White Zombies, and local dance companies, Contemporary Ballet Dallas, Dallas Neo-Classical Ballet, Big Rig Dance Collective, and Muscle Memory Dance Theatre. She is very excited to work on her first show at Theatre Three!

#### Amanda Capshaw O'Donoghue

**COSTUME DESIGN**  
is pleased to join Theatre Three for the first time with *Adding Machine: A Musical*. Recent credits include *so go the ghosts of mexico, part one and two, Galileo, 10 out of 12, Jonah, The Droll, The Fairytale Lives of Russian Girls* (Undermain Theatre), *Martyr* (Second Thought Theatre), *Ring of Fire* (WaterTower Theatre), *A Year With Frog and Toad* (Dallas Children's Theatre), *Hearts Like Fists* (Outcry Theatre). Her work can also be seen in the Undermain's upcoming production of *John*. She holds a BFA in Theatre Performance from Baylor University and an MFA in Stage Design from SMU.

#### Aaron Johansen

**LIGHTING DESIGN**  
is thrilled to be returning to Theatre Three with *Adding Machine: A Musical!* Aaron spent 8 years at the Dallas Theater Center where he started as the lighting intern in 2007. In 2015 he peacefully departed from the company as the Lighting Supervisor to pursue a career as a fulltime lighting designer.

You might have seen his work at Dallas Theater Center, Dallas Children's Theater, Kitchen Dog Theater (Artistic Company Member), Second Thought Theatre (Resident lighting designer, 2014-present), Cry Havoc Theater, Dallas Baptist University, Trinity Shakespeare Festival, Cara Mia Theater. I hope you enjoy the show!

#### Jocelyn Girigorie

**SCENIC DESIGN**  
is pleased to join the creative team at Theatre 3 Dallas for the first time. She is an MFA Stage Design Candidate at Southern Methodist University (SMU). Recent design credits include *Hit the Wall* at WaterTower Theatre, and *Hot L Baltimore* and *L'elisir d'Amore* at SMU. She also served as the Associate Scenic Designer for *Electra* with the Dallas Theatre Center. Upcoming projects include *Iphigenia*, where she will be serving as Scenic and Lighting Designer in The Greer Garson Theatre at SMU and *A Funny Thing Happened...* as Scenic Designer at Stage West.

#### John Flores

**SOUND DESIGN**  
Theatre Three: *Seminar, Bengal Tiger at the Baghdad Zoo*. Artistic Company Member of Kitchen Dog Theater: *Bre'er Cotton, Paper Flowers, Feathers and Teeth, The Thrush and the Woodpecker, Blackberry Winter, The Totalitarians, The Dumb Waiter, The Firestorm, Thinner Than Water, Gideon's Knot, The Motherfucker with*

*the Hat* and more. Dallas Theater Center: *Gloria, A Raisin in the Sun, Clybourne Park* and upcoming *Fade*. Second Thought Theatre: *Straight White Men, The Great God Pan, Martyr, Othello, Belleville, Bull, Cock, In a Forest Dark and Deep, Gruesome Playground Injuries* and more. Echo Theater: *Ruined, 'night Mother*. Stage West: *Sex with Strangers, The Aliens*. Numerous other DFW Credits. The Drama Club: *Wild, Wicked & Wyrd* live score with Jim Kuenzer as Jim/John Make Noise.

#### Juliana Dellasanta

**AEA STAGE MANAGER**  
is excited to be working with Theatre Three for the first time! She has worked in Dallas stage managing for The Tribe (Stacy Has a Thing For Black Guys, Hypochondria), as well as several SMU productions (Top Girls, The Sparrow, Bachelorette, A Flea in Her Ear, St. Joan of the Stockyards, Mary Stuart) and for Second Thought Theatre (*Straight White Men, The Necessities*). She most recently stage managed Big Thought's 1st annual Artivism: Art as Activism production of *The Magical Disappearance of Johnny's Forgotten Self*. In her spare time she enjoys being with her cat and trying not to kill all her plants.



## ■ BIOGRAPHIES CONTINUED

### Cast Biographies



#### **James Chandler** ENSEMBLE BASS

is very excited to be returning to the Theatre Three stage after having last appeared in the long running musical *Avenue Q*. Regional/Stock Credits: Casa Manana, Theatre Three, Stage West, Uptown Players, Collin Theatre Center, Theatre Britain, Inevitable Theater Company. New York Credits: The York Theater (Off-Broadway). National Tours: Dallas Children's Theater. Voice Over: *Attack On Titan*, *One Piece*, *Fairy Tail*, *Space Dandies*, *Attack On Titan Junior High*, and various others. He received his degree from Marymount Manhattan College in New York City. Follow him @jchanthaman



#### **Angela Davis** ENSEMBLE ALTO

Theatre Three debut. Dallas credits include Undermain: *10 out of 12* (Costume), *Ghost*

*Sonata* (Concierge); Lyric Stage: *Quannah!* (Ensemble), *Into the Woods* (Jack's Mother); Echo Theatre: *Her Song* (Babe Rollins); Contemporary Theatre of Dallas: *Little Women* (Marmee); Pocket Sandwich Theatre: *Death the Musical II* (Sissy); Proper Hijinx: *Two Rooms* (Ellen). Regional credits include *Macbeth* (Lady Macbeth); *King Lear* (Cordelia/The Fool); *Stop the World I Want to Get Off!* (Evie/ Anya/Ilse/Ginny); *Dancing at Lughnasa* (Agnes); *The Philadelphia Story* (Liz Imbrie); *Le Liaisons Dangereuses* (Mme. de Volange); world premiere musicals *Hiding the Sun* (Angela) and *The Haunted* (Jayne Mansfield); and *Story Songs* (featured soloist), directed by Tony Award Winner Betty Buckley. BFA, Webster University Conservatory of Theatre & Dance in St. Louis, Missouri.



#### **Brandon McInnis** SHRDLU

is a Dallas native most recently seen in Lyric Stage's *Camelot* as Mordred. Trained in vocal performance at Interlochen and Austin College, he has toured in Europe and Japan, performed alongside Grammy winner Reba Rambo in Canada, interpreted for Japanese CEOs in Sweden, and

regularly provides VO for Japanese animation dubbed into English. Other notable stage roles include Perchick in *Fiddler on the Roof* (Garland Summer Musicals) and Aldolpho in *The Drowsy Chaperone* (Collin Theatre Center). His animation and video game voiceover credits include Frodo Baggins (*Lord of the Rings Online*) and Keita Amano (*Gamers!*). He is commercially represented by Linda McAlister Talent. Twitter: @BranMci



#### **Allison Pistorius** DAISY DeVORE

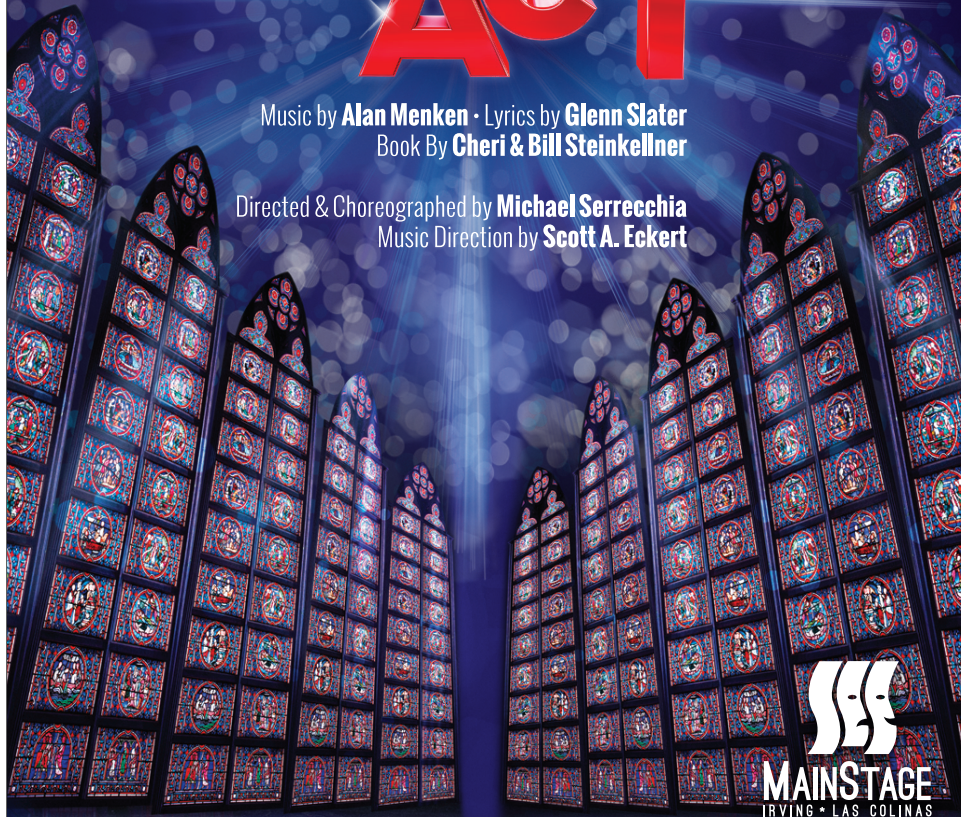
Also at Theatre Three: *The Glass Menagerie*, *Talking Pictures*. Regional/LORT: *Constellations*, *Sense and Sensibility*, *Clybourne Park* (Dallas Theater Center); *A Midsummer Night's Dream*, *Othello*, *The House of the Spirits*, *When We Are Married*, *A Christmas Carol* (Denver Center Theatre Company). Local (selections): *The Winter's Tale*, *A Midsummer Night's Dream* (Trinity Shakespeare Festival); *The Necessities*, *Martyr* (Second Thought Theatre); *The Taming of the Shrew*, *The (curious case of the) Watson Intelligence*, *The Nether* (Stage West); *Venus in Fur* (Circle Theater, WaterTower Theater); *Twelfth Night* (Shakespeare Dallas); *MacBeth*, *Much Ado About*

A DIVINE MUSICAL COMEDY!

# SISTER ACT

Music by **Alan Menken** • Lyrics by **Glenn Slater**  
Book By **Cheri & Bill Steinkellner**

Directed & Choreographed by **Michael Serrecchia**  
Music Direction by **Scott A. Eckert**



**MAINSTAGE**  
IRVING • LAS COLINAS

**NOV 3-18, 2017**  
**TICKETS START AT \$21!**  
**Call 972-252-2787**

Evening performances 7:30 PM  
Sunday matinees 2:30 PM



Funded in part by the **City of Irving**  
through the **Irving Arts Board**

*It's worth the trip!*

**IRVING ARTS CENTER**

[www.IrvingArtsCenter.com](http://www.IrvingArtsCenter.com)



## CAST AND CREW BIOGRAPHIES

*Nothing, As You Like It, The Merchant of Venice, All's Well That Ends Well* (Shakespeare Dallas Complete Works Series). Education: MFA in Acting, The National Theatre Conservatory; BA in Theatre and Dance, The University of Texas at Austin. Allison teaches Acting at Southern Methodist University and Booker T. Washington High School for the Performing and Visual Arts, records the occasional audiobook, and is in the process of completing an international, comprehensive Pilates instructor certification.



**John Daniel Pszyk**  
THE BOSS

Theatre Three debut. John holds an MFA from the University of Iowa and his BA in Theatre from Barry University in Miami Shores, FL. He has studied at Southern Methodist University and Regents University in London, England. John has over 50 production credits in the local and regional theatre stage. He is currently an Adjunct Professor at Collin

College, TCCD and The Arts Institute of Dallas. Extreme appreciation to Sugarbear, Pooky, Monkeying, Chopsocky and Snickers for their support, love and patience.



**Jeni Roller**

MRS. ZERO is making her Theatre 3 and Dallas debut. Previously, she has appeared in several Casa Manana productions including *Fiddler on the Roof*

(Grandma Tzeitel). Other recent performances include *Next to Normal* (Diana), *Les Miserables* (Fantine), *Chicago* (Roxie Hart), *South Pacific* (Nellie Forbush), and *The Light in the Piazza* (Margaret Johnson) at Amarillo Little Theatre and *Candide* (Paquette) at Amarillo Opera. Jeni resides in Fort Worth with her husband, Andy, and homeschools their five theatrically-inclined children.



**Kathryn Taylor Rose**  
ENSEMBLE SOPRANO

Sam Houston State musical theatre graduate, Kathryn was most recently seen in *I Love You Because* as New York Woman (Our Productions Theater Co.) and her own one-woman cabaret show, *Love Me, Tinder* at the West End Lounge in New York City. Other credits include: *Creep* (Lady 2) at WaterTower Theatre, *Stuart Little*, National Tour (Mrs. Little) at Dallas Children's Theater, *The Music Man* (Ethel Toffelmier) at Lyric Stage, *Fiddler on the Roof* (Libba) at Lyric Stage, *Crazy For You* (Patricia) at Theatre Three, *Ferdinand the Bull* (Ferdinand) at Stages Repertory. Kathryn is a newly wed and wants to thank her amazing husband for all his support.  
[www.kathryntaylorrose.com](http://www.kathryntaylorrose.com)



**Thomas Ward**  
MR. ZERO

This is Thomas's first production at Theatre Three. Previous DFW credits: *Straight White Men*, *Martyr* (Second Thought Theater); *10 Out of 12* (Undermain Theatre); *Wait Until Dark*, *The Explorers Club*, *Talking Pictures*, *International Falls* (Stage West); *All My Sons*, *Humble Boy*, *As You Like It* (WaterTower Theatre). Other regional credits include Actors Theatre of Louisville, Alabama Shakespeare Festival, and Georgia Shakespeare. Also a writer, Thomas co-wrote the films *Sironia* (starring Carrie Preston, Amy Acker, and Jeremy Sisto) and *Victor* which is now streaming. He holds a MFA in acting from the University of Alabama/Alabama Shakespeare Festival Professional Actor Training Program and a BA from Abilene Christian University. He currently teaches with the International Leadership of Texas.



**Ashley Wood**  
ENSEMBLE TENOR

last appeared at Theatre Three as Barrie in *Susan and God*. Other T3 productions include *The Novelist* (Frank), *Hands on a Hardbody* (Benny), *See What I Wanna See* (Priest), *Don't Dress for Dinner* (Robert), *The Devil's Disciple* (Dick), *Old Wicked Songs* (Stephen), *The Coconuts* (Harpo), and the mainstage production and subsequent 3-year continuous downstairs run of *I Love You, You're Perfect, Now Change!* (Man #1). Ashley has also worked at Dallas Theater Center, WaterTower Theatre, Stage West, Circle Theatre, Contemporary Theatre of Dallas, Kitchen Dog Theatre, Second Thought Theatre, Echo Theatre, and Remy Bumppo Theatre in Chicago. Favorite roles include James Leeds in *Children of a Lesser God*, Shannon in *The Night of the Iguana*, and Bernard in *Boeing-Boeing*.

WATERTOWERTHEATRE.ORG ▼ ADAPTED FROM THE NOVEL BY JANE AUSTEN

# PRIDE AND Prejudice

BRAND  
SPANKING  
NEW

WRITTEN BY KATE HAMILL  
DIRECTED BY JOANIE SCHULTZ

**OCTOBER 13-  
NOVEMBER 5**

2017/2018 SEASON



**WaterTower  
Theatre**  
at the Addison Theatre Centre

15650 ADDISON RD  
ADDISON, TX 75001  
(972) 450-6232







CELEBRATING 50 YEARS  
of TRANSFORMING  
LIVES THROUGH THE ARTS

TACA CELEBRATES THE TRANSFORMATIVE

# IMPACT OF THE ARTS

FOR ALL CITIZENS OF DALLAS

## 2017 TACA GRANT AWARD RECIPIENTS

African American Repertory Theater • Arts District Chorale  
AT&T Performing Arts Center • Avant Chamber Ballet • Big  
Thought • Blue Candlelight Music Series • Bruce Wood Dance  
Project • Cara Mia Theatre Company • Chamber Music  
International • Chamberlain Ballet • Children's Chorus of  
Greater Dallas • Cry Havoc Theater Company • Dallas Bach  
Society • Dallas Black Dance Theatre • Dallas Chamber Music  
Society • Dallas Chamber Symphony • Dallas Children's  
Theater • Dallas Symphony Orchestra • Dallas Theater Center  
Dallas Winds • Dark Circles Contemporary Dance • Echo  
Theatre • Fine Arts Chamber Players • Greater Dallas Youth  
Orchestra • Junior Players • Kitchen Dog Theater • Lone Star  
Wind Orchestra • Lyric Stage • Nasher Sculpture Center  
Orchestra of New Spain • Orpheus Chamber Singers • Plano  
Civic Chorus • Plano Symphony Orchestra • Sammons  
Center for the Arts • Second Thought Theatre • Shakespeare  
Dallas • Soul Rep Theatre Company • Teatro Dallas • Texas  
Ballet Theater • Texas Winds Musical Outreach • The Black  
Academy of Arts and Letters • The Dallas Opera • Theatre  
Three • TITAS • Turtle Creek Chorale • Undermain Theatre  
Uptown Players • Voices of Change • WaterTower Theatre

TACA believes in the transformative power of the arts and  
their ability to ignite conversations that demonstrate respect,  
offer exploration, examine personal challenges, celebrate  
diversity, and tender hope, joy, understanding and laughter.

214.520.3930 [taca-arts.org](http://taca-arts.org)

Photo courtesy of TITAS

REAL ESTATE  
DOESN'T HAVE  
TO BE DRAMATIC.



DANA RIGG | 214.796.5509 | [dana.rigg@cbdfw.com](mailto:dana.rigg@cbdfw.com)  
Coldwell Banker Residential Brokerage  
Preston Center – Global Luxury Office



GLOBAL  
LUXURY

Real estate agents affiliated with Coldwell Banker Residential Brokerage are independent contractor agents and are not employees of the Company. ©2017 Coldwell Banker Residential Brokerage. All Rights Reserved. Coldwell Banker Residential Brokerage fully supports the principles of the Fair Housing Act and the Equal Opportunity Act. Operated by a subsidiary of NRT LLC. Coldwell Banker, the Coldwell Banker logo, Coldwell Banker Global Luxury and the Coldwell Banker Global Luxury logo are service marks registered or pending registration owned by Coldwell Banker Real Estate LLC. 113507DFW\_5/17



# THE JAC ALDER LEGACY FUND *Legacy Donors*

## \$75,000

The John & Bonnie  
Strauss Foundation

## \$50,000

Janet Spencer Shaw

## \$25,000

Dianne & Marion Brockett  
David G. Luther, Jr.

## \$10,000

The Eugene McDermott Foundation  
Stan Graner & Jim McBride  
Sally Hansen  
Ms. Elizabeth Rivera

## \$1000 – \$9,999

Ida Jane & Doug Bailey  
Mr. Bill Bond  
James Lee Blackwell  
Mason Brown Family Foundation  
Ms. Suzanne Burkhead  
Meriam Calabria  
George & Jo Ann Caruth  
Kay Champagne  
Dede Duson  
Richard Ferguson  
Elaina & Gary Gross  
Craig A. Haynes  
Mrs. Jo Kurth Jagoda  
Ms. Emily Jefferson  
Wilson & Gwyn Mason  
Tom & Phyllis McCasland  
Ms. Elya Naxon  
Dana Whitehead Rigg  
Eileen & Harvey Rosenblum  
Ken & Susan Swan Smith  
Patricia A. Vaughan  
Charlie & Laura Weems  
Scott & Susan Williams

## \$500 – \$999

Anonymous  
Robert & Diane Alder  
Andrea "Sid" Curtis  
Gabe & Carol Dalla  
Laura V. Estrada  
Bobby & Anne Fincher  
Richard & Rozelle Gilman  
Fred J. Gross Memorial Charitable  
Fund of the Dallas Jewish  
Community Foundation  
Gregory Hahn  
Mary Anne Hardison  
Barbara K. Materka  
Sam & Barbara McKenney  
James Lee Blackwell  
Frank Sulzbach  
Weathers Family Charitable  
Fund of Communities  
Foundation of Texas  
Nina Works

## \$250 – \$499

Michael & Christine Cluff  
Carol L. Croy  
Michael L. Dailey  
Chris Westfall &  
Lisa-Gabrielle Greene  
Linda M. Lee & Jay Isham  
Mary Collins Agency  
Judy & Jack Schecter  
Gary & Genie Short  
Walt & Gigi Steele  
Van Pelt & Associates

## \$10 – \$249

Diana Behannese  
Bill & Fran Carter  
Katherine Church  
Diana Clark  
Mr. Raymond J. Clark  
Chuck Donaldson  
Mrs. Francis Estes  
Robyn Flatt  
Richard L. & Kay Fleming  
Gregory Gerardi  
Lane Gorman  
Marilyn Halpin  
Diane Haselroth  
Cherry Haymes  
Ms. Jean B. Hecht  
Barry Herbert  
Judy Hollis  
Ms. Jane Hook  
Jeff & Cora Hurst  
KEMB  
Steve Krant  
Eric Laub  
Jack & Jo Ann Leavitt  
Barbara Materka  
Grace McDonald  
Ms. Michelle Mew  
Ms. Lisa C. Miller  
Erika & Joel Nannis  
Judy & George Nassif  
Ellen Osburn  
John & Julie Parolisi  
Ms. Susan Read  
Durel & Barbara Reid  
Lynne Richardson  
Ms. Ruth May Rydell  
Mr. & Mrs. Gregory  
Shinn  
Mr. Michael Skotnik  
Jean & Neal Smith  
Ete Szuts  
Barbara Turner  
Mrs. Helen C. Walker  
Alan & Gloria Weinblatt  
R.G. Zachariadis

*To give to the Jac Alder Legacy Fund, please  
contact Theatre Three at 214-871-3300*

# THEATRE

UNT  
EST. 1890  
COLLEGE OF  
LIBERAL ARTS &  
SOCIAL SCIENCES

## BA Programs In:

- Theatre
- Performance Concentration
- Design/Tech Concentration
- All-Level Teacher Certification



VISIT [DANCEANDTHEATRE.UNT.EDU](http://DANCEANDTHEATRE.UNT.EDU) OR CALL 940-565-2211

# T3 PATRONS • THE ANNUAL FUND

Theatre Three would like to acknowledge our donors who, through their contributions, made it possible for us to present 300+ performances in two spaces to the Dallas community. Your financial support is critical to helping us nurture our local artists and provide you with rich theatrical experiences. Should you wish to be added to this extraordinary list of donors or suggest corrections to our list, please contact our company manager, Kat Edwards, at (214) 871-3300 x117. THANK YOU!

## THEATRE ANGELS

\$10,000 and above

Mr. Jac Alder  
Mrs. Janet Spencer Shaw

## PRODUCER'S CIRCLE

\$1000 – \$9,999

Ida Jane & Doug Bailey  
Susan E. Barkley  
Lawrence & Elizabeth Barron  
Mr. James Lee Blackwell  
Mr. Bill Bond  
Dianne & Marion Brackette  
Mason Brown Family Foundation  
Laura Cash-Weems  
Tim Chase & Eric Powell  
Communities Foundation  
Kathleen Cunningham &  
Randy Willis  
Dede Duson  
Ms. Pauline Graivier in Memory  
of Leonard Graivier M.D.  
Stan Graner & Jim McBride  
Elaina & Gary Gross  
Fred S. & Jerri Grunewald  
James & Gayle Halperin  
Ms. Harriet Halsell  
Ms. Sally Hansen  
Ms. Emily Jefferson  
Dr. Jere H. Mitchell  
Nesha & George Morey  
June S. Morgan  
Harry S. Moss Foundation  
Navias Family Foundation  
Ellen Osborne  
Margot and Ross Perot  
Wm W. Richardson  
Enika Schulze  
Joyia Elinson & Jerry Setliff  
O. Darwin & Myra N. Smith  
Fund of the Dallas Foundation  
in Memory of Adina L. Smith  
Norma and Don Stone  
Victoria & Jack Tutterrow

## LEADING PLAYERS

\$500 – \$999

David and Barbara Spark Baxter  
Brig. Gen. & Mrs. H.. Dalton, Jr.  
Steven & Shirley Danner  
Claudia Davis  
Virginia C. Dykes  
Ms. Katherine Eberhardt  
Bobby & Anne Fincher  
Larry & Diane M Finstrom  
David M. Forsythe  
W. John Glancy  
Mr. & Mrs. Craig Haynes  
Charles and Trudy Hess  
Henry & Mary Ellen Irving  
Mr. Michael A. Jenkins  
Lolisa Laenger  
William & Cynthia Meier  
Mr. Stacy Marshall  
Wilson & Gwyn Mason  
Maverick Capital Foundation  
Joseph & Lucille Montag  
David G. Luther, Jr.  
Ms. Elya Naxon  
Jan Nimmo In memory of  
Dan Nimmo  
Paul & Joan Ridley  
Rick Russell

Richard Schulze  
Steven Shaw  
Mr. & Mrs. Kevin & Linda Spurrier  
Sam Y. Dorfman, Jr. M.D.  
Don & Norma Stone  
Ken & Susan Swan Smith  
Genna Tucker  
Dan Van Pelt  
Weathers Family Charitable  
Fund of CFT  
Charlie & Laura Weems  
Chris Westfall  
& Lisa Gabrielle Greene

## SUPPORTING PLAYERS

\$250 – \$499

M. Ann Abbe  
Barbara Baxter  
Richard Baxter  
John P. Bell, Jr.  
Ralph & Jo Blackburn  
Craig Boleman & Kass Prince  
James D. Brown &  
Jerry A. Knight  
Ms. Suzanne Burkhead  
Kay Champagne  
Sid Curtis  
Michael L. Dailey  
Gabe & Carol Dallal  
Ms. Ronnie Claire Edwards  
James & Kathryn Erickson  
Laura V. Estrada  
Mary & Bob Fleming  
Susan & Michael Fortin  
Ms. Jane Gaines  
W. John Glancy  
Hal Systems Corporation  
Sarah Hansen  
Larry & Christie Harrison  
Mr. & Mrs. Jack W. Hawkins  
Chris & Paul Hendricks  
Christiane Hepfer  
Charles & Trudy Hess  
Louise W. Kahn  
Endowment Fund  
Betty & Tommy Keith  
Rita M. Kliebert  
Steve Krant  
Ms. Judy Lawhorn  
Maguire Oil Company  
Ed Maier  
Harry O. Malpass  
Michael & Janine Mason  
Barbara and Sam McKenney  
David & Wilma Milne  
Judy & George Nassif  
Mr. Patrick Parise  
Michelle & Jonathan Prejean  
Joe & Mary Ring  
Mary A. Ingram  
Lorraine Sear  
Jules & Hazel Schoenberg  
Jeffrey Schmidt  
Jim & Marilyn Schwartz  
Gary & Genie Short  
Todd & Debora Siddens  
SoloShoe Communications, LLC  
Texas Instruments Foundation  
Hon. Carter Thompson &  
Shirley Thompson

## BACKSTAGE BENEFACTORS

\$125 – \$249

Mr. & Mrs. David Allred, III  
Anonymous Donations  
Charles & Janie Barnhardt  
Rosanne Bell  
James & Danna Bigner  
Craig & Kass Boleman  
Mr. & Mrs. Gregory K. Boydston  
Mr. & Mrs. Robert Boyer  
Tim & Susan Carnell  
Bill & Fran Carter  
Randy & Neva Cecil  
Rita & Steve Clinton  
Morris S. Crim  
Carol Croy  
Sid Curtis  
Carol Jablonski & Michael Dill  
Ms. Ruth McAlester Duff  
Dana Edwards  
Harryette Ehrhardt  
Lee & Paula Eilbott  
Tim & Patricia Elliot  
Phil & Shannon Frink  
Gary & Edith Fritzsche  
Jane Gaines  
Mike & Sandra Gist  
Donald & Lynn Graham  
Shirley Ann Grannan  
Greg Hahn  
Rita Harvey  
Robert & Barbara Herbison  
Mr. Jim Hines  
Carol & George Kondos  
Barbara F. Materka  
Hilda S. McLaughlin  
K. Messerschmitt  
Mike & Gayla Miller  
David Milne  
Nancy & Joe Moore  
S.D. Moore  
Georgeann & King Moss II  
Gary & Susan Oviatt  
Patrick Parise  
Bill Pervin & Susan Chizeck  
Mary Petterborg  
Larry & Carol Peters  
Mr. Brett Powell  
Dr. W. Paul Radman  
Durel & Barbara Reid  
Sherry Lynn and Warren L. Rubin  
Jules & Hazel Schoenberg  
Patricia L. Shaughnessy  
Mr. & Mrs. Chris & Jayne Sparrer  
Pat Stodghill  
Dr. Joan M. Tamez  
Texas Star Arts Council  
Bob and Lynne Thompson  
Barbara S. Turner  
James F. & Barbara Wallis  
Ralph O. Weber  
Mr. Richard Wills  
Paul & Allison Wright

## FRIENDS

\$50 – \$124

Mr. and Mrs. Timothy & Laurie Ackermann  
Marilyn and David Adler  
Philanthropic Fund of the  
Dallas Jewish Community  
Foundation  
Mr. & Mrs. David Alfred, III  
Kim Altmeyer  
Roberto Andersom  
Anonymous  
Amy Applebaum  
Charles & Susan Arnett  
Mr. Greg G. Atkins  
Ms. Janet Aune  
Mr. Curtis Bagley  
IdaJane and Doug Bailey  
Steve & Mary Baker  
Alice Baltierra  
Ms. Bettye C. Barnes  
Sarah Barnes  
Preston Baron  
Mike & Susan Bartlett  
Chad Barton  
Dr. & Mrs. Steven A. Bell  
Carl & Jeanette Benson  
Vern Berry  
Ms. Taunee S. Besson  
John & Betty Birkner  
Julie Blackwell  
Ms. Linda Blase  
Frances Blatt  
Bnsf Railway Foundation  
Dr. Jo Ellen Bogert  
Mr. Bill Bond  
George Boyd  
Janine W. Brand  
Ms. Merri Brewer  
Diana Briner  
Lisha Brock  
Wayne & Tonna Brock  
Robert & Patricia C Brooks  
Suzanne Burkhead  
Nora & Pat Burns  
Ted & Carol Bywaters  
Jeanna Camp  
Mr. Bradley M. Campbell  
H.E. & Carol Canada  
Stan Carpenter  
Yvette Carter  
Nick Castanon  
Martha Ann Cates  
Mary Cave  
Mark Chambless  
Doris Cheshire  
Kim Cheshire  
John Cissne  
Mr. Raymond J. Clark  
Mr. B.J. Cleveland  
Mr. & Mrs. Cleveland Clinton  
Rita & Cleve Clinton  
Michael & Christine Cluff  
Sam & Judy Coats  
Sherri Colby  
Mr. Bruce R. Coleman  
Lee Ann Collins  
Sumico Colombo  
Martin & Michelle Conroy  
Danielle Pickard & Andrews Cope  
George & Gayle Cowart  
Betty & Tom Cox  
James Crawford  
Julie Crawford  
Jan Gartenberg & Don Alan Croll  
Jennifer Cross  
Mr. & Mrs. John Cross  
William & Juaniza Cross  
Carol L. Croy  
Andrea Curtis  
James Curtis  
Brig. Gen & Mrs. H.J. Dalton, Jr.  
Lou Michaels & John S. Davies

Annette Davis  
Karen Davis  
Travis & Veronica Day  
Ron and Cynthia DeVies  
Carol Dirks  
Bruno Cat and Bruno Dog  
Ms. Janet A. Domaracki  
John R. Donaldson  
Allan & Rhonda Duby  
Ms. Audrey Duffell  
Jo Anne Reagan Duncan  
Joshua Dwelle  
Ms. Shirley Dyess  
Ms. Kat Edwards  
Maureen Ehrlicher  
Mr. R. Bruce Elliot  
Lee & Paula Elliot  
Tim and Tricia Elliott  
Ms. April Ellis  
Laura V. Estrada  
Exxonmobil Foundation  
Mr. & Mrs. Ross Farnsworth  
Mr. and Mrs. Boyce Farrar III  
Hugh Feagin  
Michael Federico  
Dorothy E. Fischer  
Mr. Andrew Fleming  
Mary Fleming  
Richard L. & Kay Fleming  
Greg Forshay  
Bob Forner  
In Memory of Alpha A. Fowler  
Chris & Lisa Fox  
Ms. Suzanne Fox  
Ms. Chrystine Franklin  
Kurt & Donna Freed  
Mr. and Mrs. Mark Fritz  
Amy Galley  
Ms. Marianne Galloway  
Catalina Garcia & Rollin F. Gary  
Ms. Carol Ann Geckler  
Linda Gee  
Pat Gentry  
Doug & Linda Gilpin  
JAMES Glenn  
Nancy Goble  
Carol Pierce Goglia & Mark Goglia  
Eileen Goldsteen  
Stan Carpenter  
Ms. Gloria Gonzalez  
Ms. Sharon C. Graef-Browning  
Philip & Gloria Gray  
Jack & Lana Greeley  
In Honor of Jac Alder and  
in Memory of Norma Young  
Mr. Fred Grinnell  
Mr. Mark C. Guerra  
Mrs. Tambyr Haagen  
Bob & Janet Hadelier  
Eric Stuart Hagen  
Greg & Heda Hahn  
Mark & Lynda Hamilton  
Gerald & Francis Hare  
Mike Harris  
Tom Harris  
Lois Sonnier Hart and Bill Hart  
Gregory Hawthorne  
Dr. David Haymes  
Cherry Overton Haymes  
Kay Haynes  
Sandi Hebley  
Ms. Jean B. Hecht  
Reva Knight Henderson  
Morley Herbert  
Susan Herbert  
Lori Herbst  
Ms. Charlotte Herr  
Doug Miller & Bob Hess  
Dr. Pamela R. Hill  
James P. Holcomb  
Gloria Holland

Julie Holman  
Jacie Hood  
Kaki Hopkins  
John & Beverly E. Houston  
Mr. & Mrs. Ed Howard  
R. Neil & Joan Hutson  
Mr. Kyle Igneczi  
Terri Elbert Igneczi  
Mr. Kris H. Ikejiri  
Rusty & Gayle Ingle  
Linda M. Lee & Jay Isham  
Amy and Douglas L. Jackson, Jr.  
Mr. & Mrs. Douglas L. Jackson, Jr.  
Mark E. Jacobs  
Mr. & Mrs. John Jagers  
The James'  
Howard & Marla Janco  
Sue & Phil John  
Iris Johnson  
Melinda and Jim Johnson  
Mr. Parris Jones  
Ms. Carolyn Kacena  
Martin J. & Bonnie Kahn  
Nancy Kaiserman  
Mr. & Mrs. A. R. Kampschafer  
Ms. Ellen Kaner  
Bruno Cat & Bruno Dog  
Michael & Suzanne Kay  
Betty E. Kelly  
Charlotte Kelly  
Gail G. Klaveness  
Rita M. Kliebert  
Elaine Klobe  
Mr. Jerry Knight  
Marianne Kolar  
Carol & George Kondos  
Caryn Korshin  
Wendy Koster  
Steve Krant  
Anna Kuznetsova  
Lee & Kim Laird  
Carolyn Laivins  
Kelly Lane  
John H. & Pam Lange Jr.  
Dr. & Mr. Ricky Lark  
Jack & Jo Ann Leavitt  
Nicole LeBlanc  
Robin Lederer  
Jeannine Lee  
Linda C. Lee  
Mrs. M. Denise Lee  
Lois Leftwich  
Justin and Katy Lemieux  
Alan H. Levi, CPA  
Patty Lewis  
Linda M. Lee & Jay Isham  
Diane Litke  
Ms. Ruth Lockhart  
Carol Braden & Vera Locurto  
Kathy Love  
Mr. Matt Love  
Jim & Peggy Lubniewski  
Carol Ann & Dan Luby  
Gregory Lush & Maryam Baig  
David G. Luther, Jr.  
Ada Lynn in Memory of  
Sidney Lynn  
Ms. Sue Magnus  
Mr. Marvin Malm  
Mrs. Jane Malone  
Kay King Martin  
Tony Martin  
Betsy Mathson  
Rev. & Mrs. William Matthews  
Michael & Katie McCray  
Mike McFarland  
Ms. Frances McGlinn  
Cecilia Mackay  
Ricardo McKay  
Barbara and Sam McKenney  
Mr. Larry McKinney  
Ms. Shirley McLean

Paul McLin  
Mr. Michael McMillan  
Steven and Mary Jo Meisinger  
Lynn Meyerson  
Dusty Miles  
Leon & Laura Miller  
Mike & Gayla Miller  
Ms. Tracie Miller  
Trisha Miller  
Nancy & Joe Moore  
S. D. Moore  
Kip & Delynda Kipton Moravec  
Sharron Morgan  
& Stephen Flach  
Madeleine Morris  
Nan Moser  
Diana Muckleroy  
Olivia Murphy  
Ms. Jane R. Myers  
Erika Nannis  
Nancy Natinsky  
Liz Naughton  
Greg & Debbie Nieman  
Mr. Thomas J. O'Keefe  
Robert Olson  
Ms. Cathy O'Neal  
Margaret Olsson  
Mark & Lynn Oristano  
Ellen Osburn  
Lori Palmgren  
Paige Parker  
Tammy Partanen  
Ms. Linda Patston  
Ms. Carlene Peal-Sconce  
B.J. Pendegrass  
Jamison Pendergrass  
Dr. Frank Perez  
Mrs. William Pervin  
Mary Petterborg  
Russell & Murphy Phillips  
Dana Pickard  
Mrs. Janine Pitts  
Chrystin and Lonnie Pleasants  
Teri Potter  
Ms. Cynthia Powell  
Preferred Technology Solutions  
Nancy Prowse  
Wendy Koster & David Pryor  
QuickSilver Interactive Group  
Chris Rajczi  
Charles & Susan Ramirez  
Mr. Jeff Rane  
Kathleen Rastegar  
Dr. & Mrs. Peter C. Ray  
Bonnie Rea  
Susan Read  
Mr. & Mrs. Richard A. Reed  
Margie Reese  
Dr. Manfred Reinecke  
Catherine Rich  
Lynne Richardson  
David Ricker  
Sam & Sharon Ricks  
Dana Rigg  
Elizabeth Rivera  
Dr. & Mrs. A.D. Roberts  
Lo & Karen Robinson  
Meg Robinson  
Eileen & Harvey Rosenblum  
Mrs. Patricia Rowen  
Nancy & Ron Rubin  
Mr. & Mrs. Warren L. Rubin  
Ken & Phyllis Rueckert  
Stephanie Rula  
Doug & Kerrin L Rummel  
Lisa Ryan  
Ms. Ruth May Rydell  
Jay & Jessie Sackler  
Mr. Glenn Samford  
Ellen Samuels  
Melanie & Larry Sanders  
Betty Sarraatt

Ms. Jad Saxton  
Judy & Jack Schecter  
Marry Anne Ingram & Jim Schachterle  
Hal & Mary Jo Schneider  
Deborah Deering Schwartz  
Mr. Bill Sehnert  
Brooks & Vicki Shafer  
Mr. & Mrs. Gregory Shinn  
Deborah Siddens  
Bill & Brenda Sims  
Jan Sims  
Robert Sloan Advised Fund  
of the Dallas Foundation  
Margaret Sloman  
Beth Sparks  
Nancy S. Spence  
Mr. & Mrs. Lee & Laura Spencer  
Claire Stanard  
Jay Stankiewicz & Don Groves  
Mr. Matthew Stepan  
John & Michele Stephens  
Carolyn & Gene Stern  
Marge Stockton  
Ms. Jean Stoner  
James F. Strunc & Mary Anne Gentry-Strunc  
Peggy Sullivan  
Adrienne Svidlow  
Lori Swarner  
Shelly Swendig  
Anne Tabb  
Daniel T. Tamez  
Mr. & Mrs. Bruce Taylor  
T.A. & Giva Taylor  
Kim Titus  
Robert Todd  
David & Sondra Townsend  
Ms. Nancy Tuffin  
Mr. & Mrs. Tom Tunks  
Leland Turner  
Bo & Ellen Tye  
Mr. Jeffrey Underwood  
Ms. Linda Harris &  
Marty Van Kleeck  
John & Mary Ann Viola  
Isaac Leaverton & Matthew Waite  
Thomas E. & Charlotte Walker  
David Walsh  
Fred & Susan Warner  
Hal & Carolyn Warnick  
Floyd & Nancy H Watson  
Ann Weaver  
Dr. Cynthia Webb &  
Mr. Keith Webb  
Dr. Camille Kempke  
& Roy Weidig  
Ms. Lucia Welch  
Paula A. Welch  
Amanda & Michael West  
Mr. Dale A. Wheeler  
Jo Wheeler  
Dana Whitehead Rigg  
J. Kenneth & Alayne Wilemon  
Kathy Williams-Hunter  
Scott & Susan Williams  
Katharine Williams-Hunter  
Clark Willingham  
Jane Willingham  
Ellen Wilson M.D.  
Ed & Ylva Wolfgang  
Gwen Wood  
Rob Wooters  
Alison Wright  
Ken & Anita Wrobel  
Mr. R.G. Zachariadis  
Anne Zhang  
Z. & Shirley Zsohar

## IN KIND DONORS

Chris Comersall  
SoloShoe Communications, LLC

Up to date as of 9/20/17





# OPEN MINDS, MEET OPEN STORE

---

OPENING SEPT 28 IN LAS COLINAS  
N. MACARTHUR BLVD & GEORGE BUSH TURNPIKE

