

Dr. Jekyll AND **Mr. Hyde**

Adapted by Jeffrey Hatcher

From the novella by
Robert Louis Stevenson

Directed by Christie Vela



JAN **18** THRU
FEB **11** 2018

  
#T3Hyde

Classical Music and the Arts for North Texas

Classical
101
WRR 101.1 fm
wrr101.com



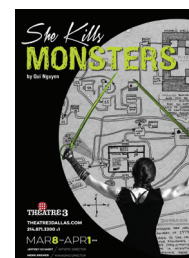
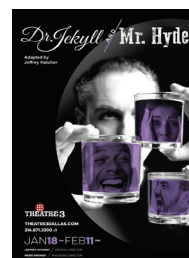
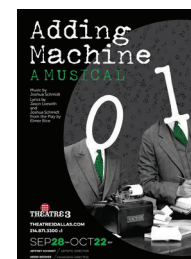
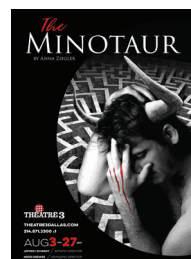
For almost a century, WRR has been the voice of
great music, theater, dance and the visual arts
for all of North Texas.

Tune in today: 101.1 FM, HD-1
and streaming online at wrr101.com

THEATRE 3
DALLAS

JEFFREY SCHMIDT / ARTISTIC DIRECTOR
MERRI BREWER / MANAGING DIRECTOR

2017-18 SEASON



SEASON TICKETS ON SALE NOW!

GET TICKETS
214.871.3300 x1
THEATRE3DALLAS.COM

DR. JEKYLL AND MR. HYDE IS MADE POSSIBLE BY...

Theatre Three is supported by its Board of Directors, by subscribers, by funds from the City of Dallas Office of Cultural Affairs, The Texas Commission on the Arts, TACA, Dallas Tourism Public Improvement District, and The Shubert Foundation. This project is supported in part by an award from the National Endowment for the Arts. A major contribution from the estate of Marlene Webb, a longtime subscriber, has established the Theatre Three Endowment Fund in support of the building and its equipment.

TACA
CELEBRATING 50 YEARS
of TRANSFORMING
LIVES THROUGH THE ARTS

Office of Cultural Affairs
CITY OF DALLAS

THE SHUBERT
FOUNDATION INC.

Texas
Commission
on the Arts

DALLAS
Tourism Public Improvement District

ART WORKS.

National
Endowment
for the Arts
arts.gov

T3 PEOPLE

BOARD OF DIRECTORS

CHAIR Scott T. Williams

BOARD MEMBERS

Chad Barton, Marion L. Brockette, Jr.,
Suzanne Burkhead, Raymond J. Clark,
Mike Cluff, Sid Curtis, Karen Davis,
Laura V. Estrada, Sally Hansen, Michael Jenkins,
David G. Luther, Jr., Stacy E. Marshall, Chris Rajczi,
Dana W. Rigg, Elizabeth Rivera, Rod Wilson
OCA LIAISON Linda Blase
ADVISORY BOARD John Strauss
HONORARY BOARD MEMBERS
Virginia Dykes, Gary W. Grubbs,
John & Bonnie Strauss

ADMINISTRATION

ARTISTIC DIRECTOR Jeffrey Schmidt
MANAGING DIRECTOR Merri Brewer
DIRECTOR OF STRATEGIC MARKETING
AND DATA ANALYSIS Kat Edwards
DEVELOPMENT ASSOCIATE Charlie Beavers
PUBLICITY, MARKETING, CREATIVE
& PLAYBILL DESIGN
SoloShoe Communications, LLC
CPA Ron King
BOOKKEEPER JaVonnia Nixon
HOUSEKEEPING Top Brass Building Services

PRODUCTION

COMPANY MANAGER Sarah Barnes
TECHNICAL DIRECTOR John Ruegsegger
ASSISTANT TECHNICAL DIRECTOR Seth Monhollon
SCENIC PAINTER David Walsh
APPRENTICE STAFF
Lyn Alessandra, Emma VanVooren

CUSTOMER SERVICE

HOUSE MANAGER Angelica Rollins
BOX OFFICE AGENTS
Tony Banda, Bennett Chapple, Isa Flores,
Jazzay Jabbar, Samantha Grace, Hannah Law



Theatre Three has Hearing Assistance devices which may be checked out without charge from the box office. These devices enhance the performance experience for audience members with any degree of hearing limitation. The box office personnel can provide you with the devices either before the show or at intermission. Theatre Three's staff and board are most grateful to donors Carolyn Wickwire and Dennis West, who provided the grant that allows us to offer this enhancement to our patrons.



In partnership with the Deaf Action Center we are proud to bring you Deaf Accessible performances!

For information and show times of our BEI/RID certified interpreted performances please visit www.theatre3dallas.com Patrons wishing to access the signed performances are requested to call Sarah Barnes at 214-871-3300 x 116 or contact her via e-mail at sarah.barnes@theatre3dallas.com.

ON OTHER STAGES

STAGE WEST

JAN 18 - FEB 11 *Like a Billion Likes*

DALLAS CHILDREN'S THEATER

JAN 19 - FEB 25 *The Very Hungry Caterpillar Show*

CIRCLE THEATRE

JAN 25 - FEB 24 *This Random World*

WATERTOWER THEATRE

JAN 26 - FEB 18 *Elliot: A Soldier's Fugue*

KITCHEN DOG THEATRE

FEB 1 - 4 *Six Characters in Search of a Play*

DALLAS THEATER CENTER

FEB 2 - MAR 4 *Frankenstein*

UNDERMAIN THEATRE

FEB 7 - MAR 11 *Three Sisters*

AMPHIBIAN STAGE PRODUCTIONS

FEB 9 - MAR 4 *Cyrano*

ARTIST ADVISORY BOARD

Maryam Obaidullah Baig, Dante Flores,
Gretchen Elizabeth Smith, Montgomery Sutton,
vickie washington

This playbill is a publication of Theatre Three, Inc. in support of *Dr. Jekyll and Mr. Hyde* (the fourth show of the 2017-18 season) on the Norma Young Arena Stage.

THEATRE THREE IS A PROUD
ASSOCIATE MEMBER OF



OPENING NIGHT
SPONSOR



THEATRE THREE'S 2017 - 2018 SEASON



Dr. Jekyll and Mr. Hyde

Adapted by Jeffrey Hatcher
From the novella *The Strange Case of Dr. Jekyll and Mr. Hyde*
by Robert Louis Stevenson

THE
NORMA
YOUNG
ARENA
STAGE

ARTISTIC STAFF

DIRECTOR

Christie Vela

COSTUME DESIGN

Melissa Panzarello

SCENIC DESIGN

Amanda West

LIGHTING DESIGN

Aaron Johansen

SOUND DESIGN

John M. Flores

ORIGINAL MUSIC

Jim/John Make Noise

FIGHT CHOREOGRAPHER

Cameron Cobb

DIALECT COACH

Lydia Mackay

DRAMATURG

Dante Flores

ADDITIONAL NIGHTMARE
SOUND/INVENTOR OF THE
UGLY BOX

Nick Earl

CAST (IN ALPHABETICAL ORDER)

Kia Nicole Boyer

EDWARD HYDE #4, POOLE,
SURGICAL STUDENT, POLICE DOCTOR

Cameron Cobb*

EDWARD HYDE #3, DR. LANYON,
POLICE DOCTOR, SURGICAL STUDENT

Michael Federico*

DR. JEKYLL

Robert Gemaehlich

EDWARD HYDE #2, SIR DANVERS CAREW,
RICHARD ENFIELD, O.F. SANDERSON,
INSPECTOR

Jeremy Schwartz*

EDWARD HYDE #1, GABRIEL UTTERSON

Natalie Young

ELIZABETH JELKES

SPECIAL THANKS

RON & JAN DAVIS

BART MCGEEHON

ROBERT NATAL

The World Premiere of DR. JEKYLL AND MR. HYDE was commissioned and produced by Arizona Theatre Company, David Ira Goldstein, Artistic Director; Jessica L. Andrews, Executive Director.

PRODUCTION STAFF

STAGE MANAGER

Juliana Dellasanta*

PRODUCTION ASSISTANT

Emma VanVooren

TECHNICAL DIRECTOR

John Ruegsegger

ASSISTANT TECHNICAL DIRECTOR

Seth Monhollon

SCENIC PAINTER

David Walsh

MASTER ELECTRICIAN

Lauren Volz

RUN CREW

Collin Curry

* indicates members working under
Actors' Equity Association contracts
in this production.



never trust a round pizza!

Event Excellence is our DNA

Corporate Audio
Creative Direction
Content Development
Brand Integration
Scenic Design
Lighting
Concert Audio
Theme Creation
Video Production
Permanent Installs
Stage and Décor
Live Event Management

JS^{AV}

J&S Audio Visual

info@jsav.com



www.jsav.com

800-852-8771

WE'RE HERE FOR EVERY STAGE.

Frost is proud to support Theatre Three.
And we'd be proud to help you at all stages of your financial life too.

frostbank.com

Uptown Financial Center
2950 N Harwood, Suite 100
Dallas, TX 75201
(214) 515-4900

MEMBER FDIC



■ BIOGRAPHIES

About the Playwrights Jeffrey Hatcher

Jeffrey Hatcher's Broadway credits include: *Never Gonna Dance* (book). Off-Broadway credits include: *Three Viewings* and *A Picasso* at Manhattan Theatre Club; *Scotland Road* and *The Turn of the Screw* at Primary Stages; *Tuesdays with Morrie* (with Mitch Albom) at The Minetta Lane; *Murder By Poe*, *The Turn of the Screw*, and *The Spy* at The Acting Company; *Neddy* at American Place; and *Fellow Travelers* at Manhattan Punchline. Other credits/theaters include: *Compleat Female Stage Beauty*, *Mrs. Mannerly*, *Murderers*, *Mercy of a Storm*, *Smash*, *Armada*, *Korczak's Children*, *To Fool the Eye*, *The Falls*, *A Piece of the Rope*, *All the Way with LBJ*, *The Government Inspector*, *Dr. Jekyll and Mr. Hyde* and others at The Guthrie, Old Globe, Yale Rep, The Geffen, Seattle Rep, Cincinnati Playhouse, Cleveland Playhouse, South Coast Rep, Arizona Theater Company, San Jose Rep, The Empty Space, Indiana Rep, Children's Theater Company, History Theater, Madison Rep, Intiman, Illusion, Denver Center, Oregon Shakespeare Festival, Alabama Shakespeare Festival, Milwaukee Rep, Repertory Theater of St. Louis, Actors Theater of Louisville, Philadelphia Theater Company, Asolo, City Theater, Studio Arena and dozens more in the U.S. and abroad. Film and Television credits include: "Stage Beauty," "Casanova," "The Duchess," and episodes of "Columbo." Grants/Awards: NEA, TCG, Lila Wallace Fund, Rosenthal New Play Prize, Frankel Award, Charles MacArthur Fellowship Award, McKnight

Foundation, Jerome Foundation, and Barrymore Award Best New Play, IVEY Award Best New Play. He is a member and/or alumnus of The Playwrights Center, the Dramatists Guild, the Writers Guild, and New Dramatists.

Robert Louis Stevenson

Scottish novelist, poet, and essayist Robert Louis Stevenson was born in Edinburgh on November 13, 1850. His father, a distinguished lighthouse engineer, urged him to study engineering at the University of Edinburgh, but Stevenson soon began preparing for a law degree. He graduated in 1875, but never practiced. Instead, he spent his time writing and traveling. He wrote short stories and essays that were later published in the collections *The New Arabian Nights* (1878), *Virginibus Puerisque* (1881), and *Familiar Studies of Men and Books* (1882) as well as travel accounts, including *An Inland Voyage* (1878), a description of a canoe trip in France and Belgium, *Travels with a Donkey in the Cévennes* (1879), and *The Amateur Emigrant* (1883), an account of his journey to California. In 1880, he married Fanny Vandegrift Osbourne, an American divorcée, in San Francisco. They returned to Europe and traveled to England, Scotland, France, and the Mediterranean in search of a climate beneficial to Stevenson's poor health. Stevenson, meanwhile, published some of his most popular short stories and novels, including *Treasure Island* (1883), *Prince Otto* (1885), *Kidnapped* (1886), *The Strange Case of Dr. Jekyll and Mr. Hyde* (1886), and

The Merry Men (1887). In 1887, after the death of his father, Stevenson and his family left Scotland and spent a year at Saranac Lake in the Adirondacks, where he began writing *The Master of Ballantrae: A Winter's Tale* (1889). He then traveled to the South Seas and settled on the island of Upolu in Samoa. There, he collaborated with his stepson, Lloyd Osbourne, on the novels *The Wrecker* (1889), *The Wrecker* (1892), and *Ebb-Tide* (1894), and published the collections *Island Nights' Entertainments* (1893), *In the South Seas* (1896), and *Underwoods* (1890), a collection of poetry that included the poem *Requiem*. He also completed the novels *Across the Plains* (1892), *Catriona* (1893), and *The Beach of Falesa* (1893) and began writing *Weir of Hermiston* and *St. Ives*, neither of which he completed. He died in Samoa on December 3, 1894.

Artistic Staff Biographies

Christie Vela DIRECTOR

has been deeply embedded in the theatrical fiber of Dallas since she arrived in 1993. She has appeared on stage at The Undermain Theater, Shakespeare Dallas, Dallas Children's Theater, Teatro Dallas, Cara Mia Theater, Amphibian Productions, Second Thought Theatre, Kitchen Dog Theater where she is an artistic company member at Dallas Theater Center where she was an original member of the Hal and Diane Brierley Resident Acting Company for 10 years. She has spent much of her career as a teaching

■ CAST AND CREW BIOGRAPHIES

artist in the community ranging from private schools to incarceration and/or Rehabilitation facilities for minors. Presently she serves as adjunct faculty at Booker T Washington High School for the Visual and Performance Arts. As a director you've seen her work at Echo Theater; UNT; The Drama Club; Second Thought Theater. Kitchen Dog Theater, Dallas Theater Center; She most recently made her directorial debut at Shakespeare Dallas and is absolutely thrilled to be doing the same at Theatre 3 with this production.

John M. Flores

SOUND DESIGN

Theatre Three: *Adding Machine: A Musical, Seminar, Bengal Tiger at the Baghdad Zoo*; Dallas Theater Center: *Fade, Gloria, A Raisin in the Sun, Clybourne Park*; Kitchen Dog Theater: *Ironbound, Bre'er Cotton, Paper Flowers, Feathers and Teeth, The Thrush and the Woodpecker, Blackberry Winter*, and more; Second Thought Theatre: *Straight White Men, The Great God Pan, Martyr, Othello*, and more; Stage West: *Sex with Strangers, The Aliens*; Echo Theater: *Ruined, 'Night Mother*. The Drama Club: *Wild, Wicked, & Wyrld*, and other DFW Theaters. John creates electronica with Jim Kuenzer as Jim/John Make Noise.

Jim/John Make Noise

ORIGINAL MUSIC

are Jim Kuenzer and John M. Flores. Since 2015 they have been composing exciting off-beat electronica and experimental music. Their works have recently been featured scoring the film *Telefoto* - directed by Richard Bailey for Tropic Films which

premiered at the 2017 Dallas Video Fest. Previously Jim/John Make Noise live scored *Wild, Wicked, & Wyrld* for The Drama Club, and brought the Latin Fury to *Fade* at Dallas Theater Center. Check out their work at www.soundcloud.com/jimjohnmakenoise

Aaron Johansen

LIGHTING DESIGN

is thrilled to be returning to Theatre Three with *Dr. Jekyll and Mr. Hyde*. Aaron spent eight years with the Dallas Theater Center starting as the lighting intern in 2007. In 2015 he amicably departed the company as their Lighting Supervisor to pursue a career as a full time lighting designer. You might have seen his work at Dallas Theater Center, Dallas Children's Theater, Kitchen Dog Theater (Artistic Company Member), Second Thought Theatre (Resident Lighting Designer, 2014-present, Artistic Associate), Cry Havoc Theater, Dallas Baptist University, Trinity Shakespeare Festival, and Cara Mía Theatre. I hope you enjoy the show!

Melissa Panzarello

COSTUME DESIGN

has designed costumes around Dallas, regionally, and in NYC. Selected career highlights include: *Fade, Constellations* (DTC); *Hillary and Clinton, The Necessities* (Second Thought Theatre); *Trevor, Feathers and Teeth, Wilde/Earnest* (Kitchen Dog Theater); *Ears on a Beatle* -world premiere directed by Mark St. Germain (Barrington Stage Company); *Signals of Distress* (SoHo Rep.); *I*

Do! I Do! (New Harmony Theatre); *Forever Plaid, The Wizard of Oz, Hello, Dolly!, Annie, Get Your Gun!*, 25th Annual Putnam County Spelling Bee, *The Marvelous Wondrettes, Pumpboys and Dinettes, Hank Williams: Lost Highway* (Post Playhouse); *The Visit* (Randolph College); *The Rocky Horror Show, Godspell, The Threepenny Opera, The Underpants, Our Town, Eurydice, Little Shop of Horrors, Othello, The Grapes of Wrath, Dracula, The Adding Machine, Closer* (various venues in Virginia)

Amanda West

SCENIC DESIGN

is a freelance designer and Director of Production for AT&T Performing Arts Center in Dallas. Selected lighting designs at Theatre Three includes *Solstice*, *Memphis, Hands on a Hardbody*, and *On The Eve*. Other recent lighting designs include *Fade* at the Dallas Theater Center, *La Cage Aux Folies*, *The Toxic Avenger Musical*, *Hedwig and the Angry Inch*, *The Boy From Oz*, at Uptown Players, *Bloom and Klezmer Rodeo* with Bruce Wood Dance Project, *Faust*, *The Incident and Wild, Wicked, Word for The Drama Club*. Upcoming projects are *She Kills Monsters* at T3 and *Priscilla Queen of the Desert* at Uptown. Amanda is a graduate of Texas Wesleyan University. See more at amandawestdesigns.com

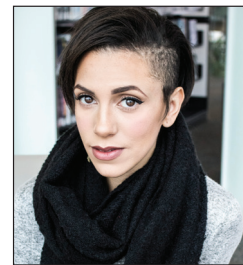
Julianna Dellasanta

STAGE MANAGER

has worked in Dallas stage-managing for The Tribe (*Stacy Has a Thing For Black Guys, Hypochondria*), for several SMU productions

(*Top Girls, The Sparrow, Bachelorette, A Flea in Her Ear, St. Joan of the Stockyards, Mary Stuart*), for Second Thought Theatre (*Straight White Men, The Necessities*). She's excited to be back for her second show with Theatre Three. She most recently worked on *Stand-Up Tragedy* at the Latino Cultural Center. In her spare time she enjoys being with her cat and trying not to kill all her plants.

Cast Biographies



Kia Nicole Boyer

EDWARD HYDE #4, POOLE, SURGICAL STUDENT, POLICE DOCTOR is absolutely thrilled to be back at Theatre Three working with this amazing group of artists. Notable credits include Jeanie in *HAIR* (Dallas Theatre Center), Nurse in *A Kid Like Jake* (Second Thought Theatre), Nicole/Woman 3 in *The Big Meal* (WaterTower), Mumbai in *Faust* (The Drama Club), and Nikki in *Sweet Charity* (WaterTower). Kia is a figurative art model, a trained ballet dancer, and is represented by The Mary Collins Agency.



Cameron Cobb

EDWARD HYDE #3, DR. LANYON, POLICE DOCTOR, SURGICAL STUDENT is honored to be reunited with so many wonderful friends in his return to Theatre 3, where he was last seen as Robbie Hart in the critically-acclaimed production of *The Wedding Singer*. In a theater career of almost twenty years, Cameron has worked at every major theater in the DFW area, including Kitchen Dog, where he is a proud company member and will direct *Pompeii!!*, an original musical he wrote with Michael Federico and Max Hartman, in the spring. He is eternally grateful to his support team, both personal and professional, and also to you - for supporting Theatre 3 and local live theater.



Michael Federico

DR. JEKYLL has contributed work as a writer to Theater Three (*On the Eve; Solstice*), but this marks his T3 acting

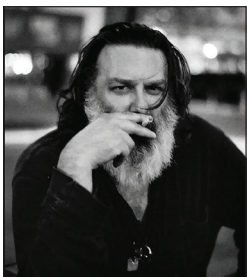
debut. Other DFW roles include Lorin in *Gloria* (Dallas Theater Center), UT Tom in *The Royal Society of Antarctica* (Stage West), Leo in *Profanity* (Undermain Theatre), and a range of roles at Kitchen Dog Theater where he is a Company Member. On television, Michael has been killed by an assassin on *The Good Guys* and has sold various products in commercials. He is represented by the Kim Dawson Agency. Michael has a BFA in Theater from SMU and an MA in Humanities from UTD. Thanks to Aspen and the entire Federico family.



Robert Gemaehlich

EDWARD HYDE #2, SIR DANVERS CAREW, RICHARD ENFIELD, O.F. SANDERSON, INSPECTOR is overjoyed to be making his debut at Theatre Three. Previous theatrical appearances include *Titus Andronicus, The Merry Wives of Windsor, The Tempest, She Stoops to Conquer, King Lear, Romeo and Juliet*, (Shakespeare Dallas) *The Merry Wives of Windsor* (Shakespeare in the Bar), *Waiting For Lefty* (Upstart Productions), *Taming of the Shrew, The Tamer Tamed* (Stolen Shakespeare Guild), as well as multiple voice credits at Funimation Studios.

CAST AND CREW BIOGRAPHIES



Jeremy Schwartz

EDWARD HYDE #1, GABRIEL UTTERSON
Selected Stage: *The Quixotic Days and Errant Nights of the Knight Errant Don Quixote* (Amphibian Stage Productions); *Se Llama Cristina*, Detroit, *Thinner Than Water* (Kitchen Dog Theatre) *Sarajevo*, *All He Fears*, *The Seagull*, *Galileo*, *Shiner* (Undermain); *Loot*, *How I Learned to Drive*, *A Christmas Carol* (DTC); *Bull*, *In a Forest Dark and Deep* (Second Thought); *The Gospel According to Thomas Jefferson*, *Charles Dickens*, and *Count Leo Tolstoy*; *Discord*, *Outside Mulligar* (WTT); *Karla* (Culture Project NYC); *At War*, *Speakeasy* (Fire Dept. NYC); *Max and the Truffle Pig* (NYMTF); *The Vix*, *Single Bullet Theory* (Lightning Strikes NYC). *Beach*, *Downwinders* (Clubbed

Thumb NYC); *Stomp and Shout an' Work it All Out* (Babel Theatre NYC). Selected Film: *Staten Island*; *The Education of Charlie Banks*; *Montclair*; *Parting Words*; *Radiant*. Selected TV/Web: *Board with Life*; *Good Medicine*; *The Sopranos*; *Law and Order: SVU*; *Rescue Me*; *Strangers With Candy*; *Filmfakers*; *The Agency*. VO Narration: *Moonshiners*; *American Weed*; *Hard Riders*; *Iron Men*; *American Eats*. Promo VO: Comedy Central; ESPN; MSNBC; HBO; A&E; Adult Swim; FOX Sports 1; Destination America. Animation: *Dragon Ball Z: Resurrection F*; *One Piece: Film Z*; *Ghost in the Shell*; *Space Dandy*; *Sealab: 2021*; T.V. *Funhouse*; *Dimension W*; *Escaplowne*; *Fairy Tale*; *Heroic Legend of Arslan*; *One Piece*. Games: *Battleborne*; *Grand Theft Auto 5*; *Star Wars: The Old Republic*; *World of Warcraft: Mists of Pandaria*; *Aerofighters Assault*; *Lost Planet 3*; *Warhammer Online*; *Nocturne*; *Dominion*; *Daikatana*; *Anachronox*.



Natalie Young

ELIZABETH JELKES
is thrilled to be returning to Theatre Three for the first time since 2009's *Trysts in Toledo*, directed by Jeffrey Schmidt. Some favorite credits include *Great God Pan*, *Bull*, *Red Light Winter*, *Some Girl(s)* and *Edmond* with Second Thought Theatre, *Titus Andronicus* and *The Merchant of Venice* at Shakespeare Dallas, as well as *Party Mouth* and *Bill* at The Ochre House and *Melancholy Play* with Upstart Productions. She holds a Bachelor of Fine Arts in Theatre from Midwestern State. Natalie is a member of Choral-Symphonic-Rock band, The Polyphonic Spree, with which she performs and tours frequently. Natalie is also the Co-Director of Dallas' premiere tap ensemble Choreo Records Tap Company.



THE JAC ALDER LEGACY FUND *Legacy Donors*

\$75,000

The John & Bonnie Strauss Foundation

\$50,000

Janet Spencer Shaw

\$25,000

Dianne & Marion Brockett
David G. Luther, Jr.

\$10,000

Stan Graner & Jim McBride
Sally Hansen
Ms. Elizabeth Rivera
The Eugene McDermott Foundation

\$1,000 – \$9,999

Ida Jane & Doug Bailey
James Lee Blackwell
Mr. Bill Bond
Mason Brown Family Foundation
Ms. Suzanne Burkhead
Meriam Calabria
George & Jo Ann Caruth
Kay Champagne
Dede Duson
Richard Ferguson
Elaina & Gary Gross
Craig A. Haynes
Mrs. Jo Kurth Jagoda
Ms. Emily Jefferson
Wilson & Gwyn Mason
Tom & Phyllis McCasland
Ms. Elya Naxon
Dana Whitehead Rigg
Eileen & Harvey Rosenblum
Ken & Susan Swan Smith
Patricia A. Vaughan
Charlie & Laura Weems
Scott & Susan Williams

\$500 – \$999

Anonymous
Robert & Diane Alder
Carol L. Croy
Andrea "Sid" Curtis
Gabe & Carol Dallal
Laura V. Estrada
Bobby & Anne Fincher
Richard & Rozelle Gilman
Fred J. Gross Memorial Charitable Fund of the Dallas Jewish Community Foundation
Gregory Hahn
Mary Anne Hardison
Barbara K. Materka
Sam & Barbara McKenney
Frank Sulzbach
Weathers Family Charitable Fund of Communities Foundation of Texas
Nina Works

\$250 – \$499

Ralph & Jo Blackburn
Michael & Christine Cluff
Mary Collins Agency
Michael L. Dailey
Linda M. Lee & Jay Isham
Judy & Jack Schecter
Gary & Genie Short
Walt & Gigi Steele
Van Pelt & Associates
Chris Westfall & Lisa-Gabrielle Greene

\$10 – \$249

Diana Behannese
Bill & Fran Carter
Katherine Church
Diana Clark
Mr. Raymond J. Clark
Chuck Donaldson
Mrs. Francis Estes
Robyn Flatt
Richard L. & Kay Fleming
Gregory Gerardi
Lane Gorman
Marilyn Halpin
Diane Haselroth
Cherry Haymes
Ms. Jean B. Hecht
Tena Hehn
Barry Herbert
Judy Hollis
Ms. Jane Hook
KEMB
Jeff & Cora Hurst
Steve Krant
Eric Laub
Jack & Jo Ann Leavitt
Grace McDonald
Ms. Michelle Mew
Ms. Lisa C. Miller
Erika & Joel Nannis
Judy & George Nassif
Ellen Osburn
John & Julie Parolisi
Ms. Susan Read
Durel & Barbara Reid
Lynne Richardson
Ms. Ruth May Rydell
Mr. & Mrs. Gregory Shinn
Mr. Michael Skotnik
Jean & Neal Smith
Ete Szuts
Barbara Turner
Mrs. Helen C. Walker
Alan & Gloria Weinblatt
R.G. Zachariadis

To give to the Jac Alder Legacy Fund, please contact Theatre Three at 214-871-3300

■ A Conversation with director Christie Vela and actor Michael Federico



Christie Vela

Christie Vela: So, thanks for joining me at Torchy's to talk about the show.

Michael Federico: My pleasure.

CV: I have two questions for you, why do you think some people, even smart people, are not aware of even the existence of this novella?

MF: That's a good question, I think what's strange to me is that they probably are familiar with the themes of the novella even if they aren't familiar with the novella itself. Not knowing the actual work, I don't know, if people just aren't reading that era of literature anymore...

CV: Right, right

MF: You know when we were younger there were movies about it. I don't if that's going on. But I was even thinking today, if you look at a show like *Westworld*, it's the sort of idea, if I were able to enact all of my deepest darkest desires without consequence, would I do that? To me that's sort of the theme of *Westworld*, and it's straight out of *Jekyll and Hyde*... so ummm... you know, whether people know the actual story or not, I think they have seen things that deal with that. I think it's something that is even more present today-

CV: -because of the internet-

MF: -yeah, because of the internet-and that we are all able to create these online

versions of ourselves and this is how we put ourselves out there to the public.

CV: But that's- none of that is real. We have these avatars, I guess, that everybody else sees, and what we present to society, and our culture constantly asks for that.

MF: And the other end of that, with the VR Worlds that are being created, and the fact that video games are so realistic now. We have these opportunities to act out these parts that we can't in public and it's just gonna get... more and more and more...

CV: Better and/or worse

MF: Yeah, so that you have this-

CV: -fantasy life. Or not necessarily this fantasy life, but like, your actual desires, like your actual, real self, that you can't put forth because polite society doesn't let you do that.

MF: Right, there's a line, one of my favorite lines that jumped out, even when I was auditioning, is the.. uh.. "morality harnessed our bestial instincts but it didn't kill them."

CV: That's so good. yeah

MF: And I think-

Server: #6 chips and queso?

MF: Thank you.

Server: There you go.

MF: -it's so true, you know? As polite as we are and how we act with each other, at the end of the day to deny that we have these animal instincts and desires, I mean, you can't deny it.

CV: Okay, so...good. So my second question is, and maybe you've already answered it, or it might be trite, but, other than because this is your job and you're an equity actor and this is how

you make a living and get insurance-

MF: Sure.

CV: -what attracted you to playing Jekyll?

MF: The main thing, there are a couple of things, one it's different. You know having worked a lot, I sort of have been, I don't want to say "typecast," but it's a different type of role for me. I often play the "put-upon" husband, and you know, the "sad-sack" if you will.

CV: (Laughter) I'd say angry-sack but okay.

MF: And this to me seemed like a fun and interesting role because Jekyll goes through so many things and while on the surface appears to be this very well put together smart guy, is kind of insane, and so that was really, I thought that would be really fun, umm, and then, also I love the play and the idea of we're going to tell this really great cool old story that is still timely, it may not change the world, but it's fun and it's sexy and scary, it's all of those cool things.

CV: right right, people keep asking me, that question, why did I want to do *Jekyll and Hyde*, you know, coming off having directed for that past few years, like some heavy stuff, *Gloria*, *Straight White Men*, *Fade*, that really touch upon like, super topical events, and this national conversation about race, and how people of color are portrayed in the media, so why go from that stuff, to something that quite frankly some people consider fluff. And It's because it IS fun, and yes, on a deeper level, there's a reason why a year after this novella was published there was a play and there has been a play of it every

year since then, and, yeah, uhh, But truly, I just love monster stories and we're all monsters. And science fiction is actually a very apt and exciting way to talk freely about the human condition, expectations, norms and big societal problems in a way that no other genre allows you to do.

MF: Yeah, and further with Hatcher's adaptation, there's something so inherently theatrical about it, the way he sort of bends time, and plays with space and time, is something to me, that you can still only do on stage

CV: Yeah, plus, all of that is achievable with simple theater magic, which is my favorite kind, you know, a slight of hand-

MF: -playing with shadows-

CV: -uh-huh, two people standing in different spaces and drawing the attention away from one so that what you do looks like magic. I love that kind of stuff...and also, not all theater is going to change the world, like you said, I have no expectation .. that someone is going to leave *Jekyll and Hyde* and say, "Yaass, I'm going to run for president and change..." You know what I mean? But it is super fun and it's going to be beautiful to look at.

MF: Yeah, again, and maybe not everybody thinks about these things regularly, but it does bring up very timely things about how we present ourselves versus who we actually are.

CV: Yeah, you know until we talked about it yesterday, I hadn't even thought about

Facebook, or Instagram, or whatever.. but it's so true, like on these dating websites, when people say all sorts of things that aren't entirely accurate, and the "rule" is you're supposed to lie, which I have heard people say and it astounds me.

MF: Yeah, right. Weird.

CV: I never got that. Well thank you for talking to me about *Jekyll and Hyde*.

Scan this QR code to read a dramaturgical study guide by Dante Flores.



ELLIOT, A SOLDIER'S FUGUE

**JANUARY 26 -
FEBRUARY 18**

2017 / 2018 SEASON

**WRITTEN BY QUIARA ALEGRÍA HUDES
DIRECTED BY DAVID LOZANO**

WATERTOWERTHEATRE.ORG

SPONSORED BY:

15650 ADDISON RD
ADDISON, TX 75001
(972) 450-6232

BA Programs In:

- Theatre
- Performance Concentration
- Design/Tech Concentration
- All-Level Teacher Certification

BEAUTIFY
AMERICA

VISIT DANCEANDTHEATRE.UNT.EDU OR CALL 940-565-2211

“THE FUNNIEST NIGHT
you will ever have **AT THE BALLET.”**



LES BALLETS TROCKADERO DE MONTE CARLO

Jan 30th, 2018
7:30 PM • Carpenter Hall

The internationally famous company will visit Irving for the first time, January 30, 2018. The Trocks as they are known, have delighted audiences for over 40 years with their unique renditions of the classics, “en pointe.” Much more than parody, this is great dancing and great fun!



TICKETS ON SALE NOW!

IrvingArtsCenter.com
or call 972.252.ARTS

IRVING
ARTS
CENTER

3333 N. MacArthur Blvd.
Irving, TX, 75062
Open 7 days a week
Free parking





CELEBRATING 50 YEARS
of TRANSFORMING
LIVES THROUGH THE ARTS

TACA CELEBRATES THE TRANSFORMATIVE

IMPACT OF THE ARTS

FOR ALL CITIZENS OF DALLAS

2017 TACA GRANT AWARD RECIPIENTS

African American Repertory Theater • Arts District Chorale
AT&T Performing Arts Center • Avant Chamber Ballet • Big
Thought • Blue Candlelight Music Series • Bruce Wood Dance
Project • Cara Mia Theatre Company • Chamber Music
International • Chamberlain Ballet • Children's Chorus of
Greater Dallas • Cry Havoc Theater Company • Dallas Bach
Society • Dallas Black Dance Theatre • Dallas Chamber Music
Society • Dallas Chamber Symphony • Dallas Children's
Theater • Dallas Symphony Orchestra • Dallas Theater Center
Dallas Winds • Dark Circles Contemporary Dance • Echo
Theatre • Fine Arts Chamber Players • Greater Dallas Youth
Orchestra • Junior Players • Kitchen Dog Theater • Lone Star
Wind Orchestra • Lyric Stage • Nasher Sculpture Center
Orchestra of New Spain • Orpheus Chamber Singers • Plano
Civic Chorus • Plano Symphony Orchestra • Sammons
Center for the Arts • Second Thought Theatre • Shakespeare
Dallas • Soul Rep Theatre Company • Teatro Dallas • Texas
Ballet Theater • Texas Winds Musical Outreach • The Black
Academy of Arts and Letters • The Dallas Opera • Theatre
Three • TITAS • Turtle Creek Chorale • Undermain Theatre
Uptown Players • Voices of Change • WaterTower Theatre

TACA believes in the transformative power of the arts and
their ability to ignite conversations that demonstrate respect,
offer exploration, examine personal challenges, celebrate
diversity, and tender hope, joy, understanding and laughter.

214.520.3930 taca-arts.org

Photo courtesy of TITAS

REAL ESTATE
DOESN'T HAVE
TO BE DRAMATIC.



DANA RIGG | 214.796.5509 | dana.rigg@cbdfrw.com
Coldwell Banker Residential Brokerage
Preston Center – Global Luxury Office



GLOBAL
LUXURY

Real estate agents affiliated with Coldwell Banker Residential Brokerage are independent contractor agents and are not employees of the Company. ©2017 Coldwell Banker Residential Brokerage. All Rights Reserved. Coldwell Banker Residential Brokerage fully supports the principles of the Fair Housing Act and the Equal Opportunity Act. Operated by a subsidiary of NRT LLC. Coldwell Banker, the Coldwell Banker logo, Coldwell Banker Global Luxury and the Coldwell Banker Global Luxury logo are service marks registered or pending registration owned by Coldwell Banker Real Estate LLC. 113507DFW_5/17

Theatre Three is committed to recognizing the donors who ensure our ability to make world class theatre here in Dallas. Join this list of wonderful patrons and make a donation to Theatre Three's Annual Fund today! While we work diligently to ensure that everyone is acknowledged properly for their contributions, sometimes mistakes are made; but luckily, right now we can blame it on the new guy! So, if you believe you have been left off, or if you would like to list your donation in honor of a loved one, or if we put your name in the wrong place, or if we got your name wrong – PLEASE, call the new guy, Charlie Beavers, Development Associate at (214) 871-3300 x101

This list represents donations received after December 1st, 2016

THEATRE ANGELS
\$10,000 and above

Harry S. Moss
Foundation
The Shubert
Foundation
The Estate of Ms.
Brenda Stubel

PRODUCER'S CIRCLE
\$1000 – \$9,999

Ida Jane & Doug Bailey
Susan E. Barkley
Mr. James Lee
Blackwell
Mr. Bill Bond
Dianne & Marion
Brockette
Ms. Suzanne Burkhead
Ms. Lauren Embrey
Fred S. & Jerri
Grunewald
Sarah M. Hansen
Charles & Trudy Hess
Mr. David G. Luther Jr.
Dr. Jere H. Mitchell
Nesha & George
Morey
Navias Family
Foundation
Margot B. Perot
Mr. & Mrs. Warren L.
Rubin
Karn & Jennifer
Schmidt
Enika Schulze
Lorraine Sear & John
McCafferty
Jerry Setliff & Joyia
Elinson
Don & Norma Stone
Texas Instruments
Foundation
Victoria & Jack
Tutterrow
Mr. & Mrs. Charles
Weems
Whole Foods Market

LEADING PLAYERS
\$500 – \$999

Kay Champagne
Shirley Danner
Mrs. Karen Sasser
Davis
Virginia C. Dykes
Bobby & Anne Fincher
Larry Finstrom
David M. Forsythe
W. John Glancy
Elaina and Gary Gross
Mr. & Mrs. Craig
Haynes
Mr. Michael A. Jenkins
Chuck & Lolisa
Laenger
Wilson & Gwyn Mason
Sam & Barbara
McKenney
William & Cynthia
Meier
Joseph & Lucille
Montag
Ms. Elya Naxon
Jan Nimmo In memory
of Dan Nimmo
Rick Russell
Ken & Susan Swan
Smith
Genna Tucker
Weathers Family
Charitable Fund of CFT
Mr. & Mrs. Scott T.
Williams

SUPPORTING
PLAYERS
\$250 – \$499

Ann Abbe
Dr. Barbara S Baxter
Rosanne Bell
John P. Bell, Jr.
Ralph & Jo Blackburn
Frances Blatt
Morris S. Crim
Andrea Curtis
Michael L. Dailey

Gabe & Carol Dallal
Mr. & Mrs. Jack W.
Hawkins
Paul & Chris Hendricks
Christiane Hepfer
Mary A. Ingram
The Dallas Foundation
Tommy & Betty Keith
Rita M. Kliebert
Carol & George
Kondos
Steve Krant
Ms. Kelly K. Lane
Ms. Judy Lawhorn
Harry Malpass
Michael & Janine
Mason
Barbara F. Materka
Michelle Prejean
Jeffrey Schmidt
Jennifer I Schmidt
Todd and Debora
Siddens
Soloshoe
Communications
Drayton Insurance
Brokers, Inc.
Dr. Joan M. Tamez
James F. & Barbara
Wallis
Paul & Alison Wright

BACKSTAGE
BENEFACTORS
\$125 – \$249

Anonymous Donations
Mr. & Mrs. David
Allred, III
Richard Baxter
Craig & Kass Boleman
Mr. & Mrs. Gregory K.
Boydston
Bravo Entertainment
Naomi Butler
(donation made
in honor of Randy
Beckham)
Susan Carnell

D. Scott Cooper and
Conrad Hamric
Carol L. Croy
Carol Jablonski &
Michael Dill
Ms. Ruth McAlester
Duff
Dana Edwards
Harryette Ehrhardt
Lee & Paula Eilbott
Mary & Bob Fleming
Sharon and Mark Fritz
Ms. Jane Gaines
Greg and Heda Hahn
Bob & Barb Herbison
Paul McLin
David & Wilma Milne
Nancy & Joe Moore
Mr. Patrick Parise
Ms. Carlene
Peal-Sconce
Bill Pervin & Susan
Chizeck
Mary Petterborg
Durel & Barbara Reid
in memory of Randy
Beckham
Lynne Richardson
Rodolfo E. Salas
Jules & Hazel
Schoenberg
Mr. & Mrs. Chris &
Jayne Sparrer
Robert & Lynne
Thompson
Mr. Richard Wills

FRIENDS
\$50 – \$124

Marilyn and David
Adler Philanthropic
Fund of the Dallas
Jewish Community
Foundation
Charles & Susan Arnett
Mr. Curtis Bagley
Mrs. Ida Jane Bailey
Ms. Bettye C. Barnes

Mike & Susan Bartlett
Carl & Jeanette
Benson
Beyond
John & Betty Birkner
Henry & Annie Bivins
Highport Marina - in
memory and honor
of Randy Beckham
(Pyrotex)
Bnsf Railway
Foundation
Dr. Jo Ellen Bogert
Jeanna Camp
H.E. & Carol Canada
Bill & Fran Carter
Mrs. Rita Clinton
Michael & Christine
Cluff
Sumico Colombo
In Memory of
Randy Beckham
Communities
Foundation of
Texas
Kathleen Cunningham
& Randy Willis
Brig. Gen & Mrs. H.J.
Dalton, Jr.
John S. Davies and
Lou Michaels
Claudia Davis
Travis & Veronica Day
MPI DFW in memory
of Randy Beckham
Amon & Pauline
Denur
Ms. Janet A.
Domaracki
Mr. Joshua Dwelle
Tim and Tricia Elliott
Mr. R. Bruce Elliott
Laura V. Estrada
ExxonMobil
Foundation
Dorothy E. Fischer
Richard L. & Kay
Fleming
Robert Forner
In Memory of Alpha
A. Fowler
Ms. Chrystine Franklin
Gary & Edith Fritzsche
Mrs. Amy Galley
Margaret Gillett
Doug & Linda Gilpin

Mr. James Glenn
Donald & Lynn
Graham
Mr. & Mrs. Jack &
Lana Greeley
Bob and Janet Hadeler
Mark & Lynda
Hamilton
Gerald & Francis Hare
Tom & Cohnie Harris
David & Cherry
Haymes
John & Sandi Hebley
Ms. Jean B. Hecht
Morley & Cheryl
Herbert
Bob Hess & Doug
Miller
Dr. Pamela R. Hill
Mr. Mark Jacobs
The James'
Howard & Marla Janco
Sue & Phil John
Melinda Johnson
Mr. Parris Jones
Ms. Carolyn Kacena
Nancy Kaiserman
Charlotte Kelly
Mr. Douglas Kennedy
Mr. Jerry Knight
Juris & Carolyn Laivins
Pam Lange
Jack & Jo Ann Leavitt
Linda M. Lee & Jay
Isham
Katy Lemieux
Mr. Alan H Levi
Mrs. Susan Lichten
Harriet Little
Mr. Matt Love
Carol Ann & Dan Luby
Gregory & Maryam
Lush
Rev. & Mrs. William
Matthews
Ms. Frances McGlinn
Stacy Meadows
Preferred Technology
Solutions
K. Messerschmitt
Leon Miller
Mike & Gayla Miller
Ms. Trisha Miller
S.D. Moore
June S. Morgan

Dean and Danette
Morgan
Stephen Flach &
Sharron Morgan
Madeline Morris
Diana Muckleroy
Erika & Joel Nannis
Robert A. Olson
Ms. Cathy O'Neal
Mark Oristano
Patricia Pace
Nancy Prowse
David Pryor
Charles & Susan
Ramirez
Dr. & Mrs. Peter C.
Ray
Bonnie Rea
Mr. & Mrs. Richard A.
Reed
Diane Reed
Ms. Margie Reese
Catherine Rich
David W. Ricker
Dana Whitehead Rigg
Ms. Elizabeth Rivera
Gaye Ross
Paul & Stephanie Rula
Lisa Ryan
Ms. Ruth May Rydell
Mr. Glenn Samford
Melanie Lynn Sanders
Mrs. Janet Spencer
Shaw
Mr. & Mrs. Gregory
Shinn
Deborah Siddens
Margaret Sloman
Nancy Spence
John & Michele
Stephens
Ms. Jean Stoner
James F. Strunc
& Mary Anne
Gentry-Strunc
Deborah & Craig
Sutton
Anne Tabb
Pat Tarpley
Robert Todd
John & Marilyn Tolle
Mr. & Mrs. David
Townsend
Plano Balloon Festival
in Memory of
Randy Beckham

Mr. John Viola
Isaac Leaverton &
Matthew Waite
Hal & Carolyn Warnick
Floyd & Nancy H
Watson
Mrs. Amanda West
Mr. Dale A. Wheeler
J. Kenneth & Alayne
Wilemon
Clark & Jane
Willingham
Ellen Wilson M.D.
Ed & Ylva Wolfgang
Ken & Anita Wrobel
Anne Zhang
Mr. Zoltan Zsohar

IN KIND DONORS
SoloShoe
Communications, LLC

Organic Produce That Tastes Like You Grew it Yourself



We Believe in Real Food™

[WFM.COM/STORES](https://www.wfm.com/stores) | [@WHOLEFOODS](https://www.instagram.com/wholefoods)