



MEDICINE MAN

by Jeffrey Sabin March 17 — April 23, 2005



MERRILY WE ROLL ALONG

by Stephen Sondheim & George Furth April 3 — 13, 2005

THEATRE THREE

THE theatre-in-the-round at the Quadrangle
2004-2005 SEASON

JAC ALDER, Executive Producer-Director, presents

2800 Routh Street, #168
Dallas, Texas 75201
Box Office: 214-871-3300, option 1
Administration: 214-871-3300, option 2
Administration Fax: 214-871-3139
Direct Sales: 214-871-3300, option 3
Email: admin@theatre3dallas.com
Web page: www.theatre3dallas.com

Regarding Theatre Three...

Theatre Three is a 501(c)3, not-for-profit cultural institution founded in 1961 by Norma Young. It serves to celebrate and honor the three essentials of theatre for which she named it: gifted playwrights, talented theatre artists, and adventurous audiences.

Regarding this performance...

- Concessions are available in the lobby.
- Cameras or recording devices of any kind are prohibited.
- Please turn off (or silence) all cell phones and pagers.
- Please remember that talking during performances disturbs fellow theatre-goers.
- No late-comers will be seated once the performance commences.
- Please finish refreshments in the lobby.

For theatre goers with disabilities...

- Please feel free to call upon our staff for assistance.
- Wheelchair locations are available.
- Half of the seats may be reached by aisles with handrails.
- A wheelchair-accessible restroom is next to the box office.
- Handicapped parking is next to the Dream Café and the new East Wind Restaurant.

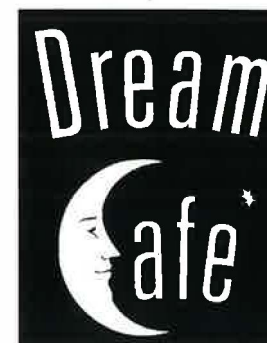
Regarding parking...

All parking is free. Surface parking surrounds The Quadrangle.

Garage (tower) parking is accessible just off Routh on Laclede Street.

THEATRE THREE'S BOARD OF DIRECTORS:

Janet Spencer Shaw, Chair;
Jac Alder, D'Metria Benson, Martin
L. Camp, Angela V. Choquette,
Michael Davis, Jim Dow, Roland &
Virginia Dykes, David Forsythe,
Gary W. Grubbs, Matt Jansha,
Jeannine Lee, John Lilley, David G.
Luther, Sonja J. McGill, Elizabeth
Rivera, Jeff Sanders, Enika
Pearson Schulze, Karen
Washington, Patsy P. Yung



The Dream Café

2800 Routh Street, Dallas, Texas 75201
Next door to Theatre Three
214-954-0486

We gladly take reservations for
theatergoers in a hurry!

The playbill is a publication of Theatre Three, Inc. 2800 Routh Street., #168 Dallas, Texas 75201.
This Theatre Three playbill is published for

- **Medicine, Man** by Jeffrey Stanley, the sixth show of the Mainstage Series of the 2004-2005 season
- **Merrily We Roll Along** by Stephen Sondheim and George Furth, the third show of the Appetizer Attraction Series of the 2004-2005 season.

Cover art by Harland Wright and MPH Printing & Promotional Products
Playbill Editors: Jac Alder, Kimberly Richard

Time to say farewell to your car, truck, boat,
motorcycle or trailer?
Then please donate it to Theatre Three!

CARS INTO
COSTUMES!



AUTOS INTO
ART!



Even if it doesn't run any longer, donate your vehicle, and we'll tow it at no cost too! The money will provide much needed funds for costumes...or medical coverage for an actor. And you get to deduct the *maximum* blue book value regardless of condition!

Call 214.871.2933



MEDICINE, MAN
by Jeffrey Stanley March 17 — April 23, 2005



MERRILY WE ROLL ALONG
by Stephen Sondheim & George Furth April 3 — 13, 2005

THEATRE THREE presents the third show of the Appetizer Attraction Series of the 2004-2005 season...

Produced by special arrangement with Music Theatre International



Artistic Staff

Director Jac Alder
Musical Direction Terry Dobson
Lighting Design Russell Dyer

Production Staff

AEA Stage Manager *Sally Soldo
Production Manager & Prop Master Linda Harrison
Production Assistant **Michael Speck

Cast

Franklin Shepard	David Brown
Charley Kringas	Gary Floyd
Mary Flynn	*Amy Mills
Joe Josephson	*Gary Taggart
Beth	Kelly Rypkema
Gussie Carnegie	Peg Waldschmidt
Meg, Dory, K.T.	Lindsey Holloway
T.V. Newswoman, Mrs. Spencer	Jenay Puckett
Tyler, Judge	Brian Harkins
Scotty, T.V. Newsman, Mr. Spencer	Stan Graner
Terry, Bunker	Rick Starkweather

Synopsis of Scenes

Act I	Act II
Scene 1 Bel Air, California: 1976	Scene 1 Alvin Theatre, New York: 1964
Scene 2 NBC Studio, New York: 1973	Scene 2 Gussie & Joe's Brownstone, New York: 1962
Scene 3 Frank's Apartment, New York: 1968	Scene 3 The Downtown Club, New York: 1960
Scene 4 Manhattan Courthouse, New York:	Scene 4 New York City: 1957 — 1959
	Scene 5 A Rooftop on 110th Street, New York: 1957

There will be one 15 minute intermission.

Musical Numbers

Act I	Act II
<i>Merrily We Roll Along</i>	<i>Company</i>
<i>That Frank</i>	<i>Company</i>
<i>Old Friends — Like It Was</i>	<i>Mary, Charley</i>
<i>Franklin Shepard, Inc.</i>	<i>Charley</i>
<i>Old Friends</i>	<i>Mary, Frank & Charley</i>
<i>Growing Up</i>	<i>Franklin & Gussie</i>
<i>Not A Day Goes By</i>	<i>Beth</i>
<i>Now We Know</i>	<i>Mary & Company</i>
	Opening
	<i>It's A Hit</i>
	<i>The Blob</i>
	<i>Growing Up</i>
	<i>Good Thing Going</i>
	<i>Bobby & Jack & Jackie</i>
	<i>Not A Day Goes By</i>
	<i>Opening Doors</i>
	<i>Our Time</i>
	<i>Gussie</i>
	<i>Joe, Frank, Mary,</i>
	<i>Beth, Charley</i>
	<i>Company</i>
	<i>Gussie</i>
	<i>Charley, Frank</i>
	<i>Charley, Frank, Beth</i>
	<i>Beth, Mary, Frank</i>
	<i>Company</i>
	<i>Company</i>

Jac Alder (Director)

Jac Alder produced and directed the first Sondheim seen in Dallas when Theatre Three presented *A Funny Thing Happened on the Way to the Forum* in 1968. (The theatre has subsequently staged it twice, each time with Larry O'Dwyer in the role of Pseudolus.) Other shows by Sondheim that Alder has produced-directed (and often designed) include Theatre Three presentations (and Dallas premieres of) *Company*, *Side by Side by Sondheim*, *Sweeney Todd*, *You're Gonna Love Tomorrow*, *Saturday Night*, and *The Frogs*. Sondheim's *A Little Night Music* was the first production staged after the theatre's renovation in 1986. The composer kindly contributed a number to an original Theatre Three revue (*Ball Games*) conceived by Alder and Terry Dobson. In addition to *Merrily We Roll Along* downstairs, Alder is directing Sondheim's *Putting It Together* as the final attraction of the 2004-2005 season.



Terry Dobson (Musical Director)

May 2005 is Terry's 25th anniversary at Theatre Three. He currently serves as Theatre Three's Company Manager and Musical Director. He has directed numerous hits including *I Love You, You're Perfect, Now Change*, *Myths and Hymns*, *First Lady Suite*, and recently *You're A Good Man, Charlie Brown*. As an actor, Terry has appeared in Theatre Three productions of *Sylvia*, *Nice People Dancing to Good Country Music*, *Beyond Therapy*, *Death Defying Acts*, *God's Man in Texas* and last season's *Dirty Blonde*.

George Furth (book)

George Furth was born in Chicago and graduated from Northwestern University; he did postgraduate work at Columbia University. He has worked extensively as an actor, appearing in many feature films, including *The Best Man*, *Oh God!*, *Doctor Detroit*, *Young Doctors In Love*, *The Man With Two Brains*, *Cannonball Run*, *Hooper*, *Butch Cassidy and the Sundance Kid*, *Blazing Saddles*, *Shampoo*, *Sleeper*, *The New Interns* and *Myra Breckinridge*; he also acted in many major television shows. In addition to *Company*, he has written the Broadway shows *The Act*, *Twigs*, *The Supporting Cast*, *Precious Sons* and *Getting Away With Murder*.

Stephen Sondheim (music and lyrics)

Stephen Sondheim, one of the most influential and accomplished composer/lyricists in Broadway history, was born in New York City. As a teenager he met Oscar Hammerstein II, who became his mentor. His first professional musical theatre job was as the songwriter for the unproduced musical *Saturday Night*. He wrote the lyrics for *West Side Story*, *Gypsy* and *Do I Hear A Waltz?*, as well as additional lyrics for *Candide*. Musicals for which he has written both music and lyrics include *A Funny Thing Happened On The Way To The Forum*, *Anyone Can Whistle*, *Company*, *Follies*, *A Little Night Music*, *The Frogs*, *Pacific Overtures*, *Sweeney Todd*, *Sunday In The Park With George*, *Into The Woods*, *Assassins* and *Passion*. *Side By Side By Sondheim*, *Marry Me A Little*, *You're Gonna Love Tomorrow* and *Putting It Together* are anthologies of his work. He is on the Council of the Dramatist Guild, and was elected to the American Academy of Arts and Letters. He was also recipient of a Kennedy Center Honor in 1993.

David Brown (Franklin Shepard)

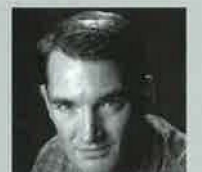
This Orlando, Florida native is making his Theatre Three debut with this role. He holds an MFA in poetry from Penn State University and has performed at numerous theatres in California, New Hampshire, Pennsylvania, and Texas, playing leading roles in *1776*, *Godspell*, *Camelot*, *The Sound of Music*, *My Fair Lady*, *Baby*, *South Pacific*, *Brigadoon*, and *The Pirates of Penzance*. He is currently the English Department Chair at St. Mark's School.

Gary Floyd (Charley Kringas)

Gary Floyd is happy to be making his Theatre Three debut with *Merrily We Roll Along*. Most recently, he has been seen as David in *King David* (Lyric Stage), Ensemble in *The Rocky Horror Show* (CTD), and L.M. in *Pumpboys & Dinettes* (CTD), for which he received the 2004 Leon Rabin Award for Supporting Actor in a Musical. Gary is also a prolific songwriter/recording artist, and his latest CD, *Unbound*, can be found at his website, www.gary-floyd.com. Gary is represented by The Home Agency.

Stan Graner (Scotty, TV Newsmen, Mr. Spencer)

Stan Graner is happy to be returning to his "old friends" at T3 after a long absence, being best known to T3 audiences for his portrayal of Bobby in *Company*. He also appeared in *Rise and Shine*, *Tomfoolery*, and *The Frogs*. Other credits – Plano Rep: *Floyd Collins* (Floyd), *Violet* (Father), Lyric Stage: *The Pajama Game* (Prez), *Roadside* (Buzzey), *The Most Happy Fella* (Herman), Circle Theatre: *The Exact Center Of the Universe* (Apple), *The Countess* (John Ruskin), Classical Acting Company: *Romeo and Juliet* (Montague), Kitchen Dog Theatre: *The Juniper Tree* (Husband), Theatre Arlington: *The Secret Garden* (Archibald), *It's a Wonderful Life* (George Bailey). He's also appeared at Casa Mañana, Stage West, Garland Summer Musicals, and Granbury Opera House.

Brian Harkins (Tyler, Judge)

Born and raised in Buffalo, NY, Brian has performed in many regional theaters around the country including Miami, Austin, and Las Vegas. Favorite roles include Sparky in *Forever Plaid*, Sylvia in *Ruthless!*, & the Balladeer in *Assassins*. After 7 years away from the theater he's very happy to be making his return (it's not a come-back... he hates that word!) at Theatre Three.

Lindsey Holloway (Meg, Dory, K.T.)

Lindsey is thrilled and honored to be working at Theatre Three (Theatre Tool!) for the first time, as well as to be having her first major go-round with Sondheim. Recent roles include: Barbara Pepper - *An American Love Story*, NYC-bound workshop; Jeanne - *State Fair* (It's About Time Productions); Grandma Tzeitel - *Fiddler on the Roof* (FMPAT). Thanks to Jac and Terry for this fabulous opportunity. To friends and family, wonderful, glorious friends and family, "Thank you for everything, and I love you."

Amy Mills (Mary Flynn)

Amy Mills has appeared onstage at Theatre Three for over 20 years in such shows as *Spinning Into Butter*, *Into the Woods*, *Pumpboys and Dinettes*, *Second Thresh-old*, *Heartbeats*, *The Threepenny Opera*, *A... My Name Is Alice*, *Myths and Hymns*, *First Lady Suite*, and the longest running hit, *I Love You, You're Perfect, Now Change!* She received a 2003 Rabin Award for her performance as Alice Bean for her performance in Lyric Stage's of *Titanic*. She has been seen at Casa Manana, Bass Hall, Dallas Theater Center, The MUNY, Northshore Music Theatre, Arkansas Rep, the Cape Playhouse, Dallas Children's Theater, Stage West, and the Dallas Summer Musicals. In her spare time she works on staff at Theatre Three, and hides out in Oak Cliff with her husband, actor Doug Jackson, and their two daughters, Emily and Abigail.

Jenay Puckett (TV Newswoman, Mrs. Spencer)

This is Jenay's first performance at Theatre Three. Jenay has performed in Plano's production of *Violet* and was Stella Deems in *Follies* at Lyric Stage. Jenay is very proud to have been a part of the Rabin award winning *Sunday in the Park with George* as Old Lady/Blair at PRT, and *Titanic* as Eleanor Widner at Lyric Stage. Other roles include Molina's mother in *Kiss of the Spider Woman* at Uptown Players; Meg in *Damn Yankees* with ICT; *The Miracle Worker* as Aunt Ev; *Musical Comedy Murder Mysteries of 1940* as Helsa at GCT; *The Sound of Music* (1996) as Sister Berthe also at GCT and the Rabin nominated *My Favorite Year* at PRT. Thanks to friends and family for their prayers and support.

**Kelly Rypkema (Beth)**

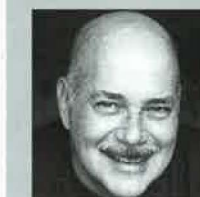
Kelly is excited to make her debut with Theatre Three. She has performed for a variety of Dallas theater companies including Dallas Summer Musicals, It's About Time Productions, Plano Rep., ICT Mainstage, Contemporary Theatre of Dallas, and Echo Theatre. Audiences have most recently seen her as Marge in *State Fair*, Lily in *The Secret Garden* (Leon Rabin nomination), and Tzeitel in *Fiddler on the Roof*. Kelly began college as a music major but took a slight detour and finished with a Master's in Biology. She returns to her roots in theater every chance she gets, and thanks her family, friends and mentors for their support.

**Rick Starkweather (Terry, Bunker)**

This marks Rick's 3rd appearance at Theatre Three. Rick returns back home after completing the World Tour (U.S./Canada/Mexico/United Kingdom) of the children's imaginary purple dinosaur, *Barney's Colorful World*. Most recently, he returned to the revival of *Adventures In Love* (FMPAT) and choreographed *Annie Get Your Gun* (Metropolitan Christian School). Local: *Myths & Hymns*, *Bat Boy: The Musical* (Theatre Three); *Adventures In Love* - 2002 Premiere, *Cabaret*, *Annie* (FMPAT); *Godspell*, *Grease* (Theatre Arlington); *Hello Dolly*, *Fiddler on the Roof*, *The Will Rogers Follies* (GSM); *Carnival*, *Gypsy* (Lyric Stage); *Come Into the Light* (DCT). Summer Stock: *Godspell*, *Snoopy: The Musical*, *You're A Good Man, Charlie Brown* (Magic Waters Theatre Company) Film/Video: *Barney's Colorful World* (Hil Entertainment 2004), Carlson Restaurants Worldwide.

**Gary Taggart (Joe Josephson)**

Gary was given his start in Dallas theatre by Jac Alder and Norma Young in 1982, a season that saw him in four shows at Theatre Three, including the little role in *Sweeney Todd*, still his most treasured theatrical memory. Except for a tour of *Grand Hotel* with members of the Broadway and London casts that took him to both coasts in 1999, and a few forays to Northshore Music Theatre in Massachusetts, Theatre Under the Stars in Houston, and Arkansas Rep, he's remained a Metroplex actor, appearing occasionally at the Dallas Theater Center, Lyric Theater, Circle Theater, Casa Manana, Dallas Summer Shakespeare and a host of theaters now defunct; and frequently at Stage West and Granbury Opera House. Favorite roles include Carriere in *Phantom of the Opera*, Leonato in *Much Ado About Nothing*, V. in *Travels With my Aunt*, Harry Mitchell in *The Sum of Us*, and Abel Frake in *State Fair*. It's lovely finally to be back at the Quadrangle. Thank you Jac and Terry.

**Peg Waldschmidt (Gussie Carnegie)**

Peg Waldschmidt has been a performer, choreographer, and a teacher for over 25 years. She has performed professionally as an actress and has worked on the stage throughout the midwest. In her 25 years of teaching she has had the privilege to teach choir and drama to students from elementary school up to college level, and was the Artistic Director of the Parker Square Playhouse in Flower Mound. Peg holds a MME from Wichita State University and lives in Coppell with her loving husband and three fantastic children. She is excited to get to perform at Theatre Three and especially to be performing Sondheim's work.



The 2004-2005 Appetizer Attraction Series Sponsors



Vietnamese Restaurant &
Sushi Bar

2800 Routh Street, Suite 155
Dallas, Texas 75201

Phone 214.745.5554
Fax 214.745.1555

EAST≡WIND
www.eastwinddallas.com



Bring in your Theatre Three
ticket stub and get 20% off
food and beverage.
(Not valid with any special offer,
bottled wine, or to go orders.)

2704 Worthington
(right across the street from the Quadrangle)
214-871-3330

What's Going on At Theatre Three!



Join Us for Theatre Three's 2005-2006
Mainstage Season
From h.c. to a.d. — Plays of the Legendary Storytellers

Crowns
by Regina Taylor July 7 — August 13, 2005

The Imaginary Invalid
by Molière August 25 — October 1, 2005

I'll Leave It To You
by Noel Coward October 13 — November 19, 2005

Children of Eden
by Stephen Schwartz December 1, 2005 — January 14, 2006

The Devil's Disciple
by G. Bernard Shaw January 26 — March 4, 2006

The Mousetrap
by Agatha Christie March 16 — April 22, 2006

Metamorphoses
by Mary Zimmerman May 11 — June 17, 2006

Subscribe NOW!

Fill out the insert in
this playbill and
turn it into the box
office or call
Theatre Three's
box office at
214-871-3300.

*All shows and titles are
subject to change
based on availability of
performance rights.*

The 2004-2005 Season Sponsors



Theatre Three is supported by its Board of Directors, by subscribers, by funds from the City of Dallas Office of Cultural Affairs, and The Texas Commission on the Arts. Supporters also include TACA. Major corporate season sponsors include, *The Dallas Morning News*, and WFAA Channel 8. Jones Day is a Supporting Player sponsor of the 2004 — 2005 season. For more information about Theatre Three's corporate sponsorship program, please contact Greg MacPherson or Jac Alder at 214-871-3300, #2.

IN MEMORIAM

Contributions have been made in memory of, or from the estates of...

Sam & Shirley Jones Catter, Bill Dallas, William T. Dobson, Scott Everheart, Javad Fiuzat M.D., Paula Goodlet, Oliver Hailey, Lloyd W. Kitchens Jr., M.D., Anne Weeks Jackson, Jim Jackson, Lynn Mathis, Masha Porte, Carolyn Ryburn, Frank Rey, Mary Blanche Scales, Charlotte E. Schumacher, Lynn Townsley, May Tweed, Audrey B. Waite, Evelyn Wilke, Martha Roselyn Wright, and Norma Young.

Beginning with the 1996-1997 season, all memorial gifts, unless otherwise designated, are placed in the theatre's new permanent building endowment fund.

Theatre Three's Wish List

Dear Playgoer,
I'm always asking for money. After all, it is money that pays the bills, pays the staff and generally keeps things going at a non-profit organization like Theatre Three. But sometimes, we need — well, for lack of a better description — stuff. In the past, patrons have donated clothes for our costume shop and even furniture that has been used onstage. I've always been grateful for people's generosity, but then I realized that people may have other "stuff" or even skills and talents that they might like to give. They just don't know that the theatre needs it! So I've asked around the theatre and I've come up with a little "wish list" of the theatre's needs. Check your closets and your garages and you might find some "stuff" that could make Theatre Three's wish come true.

Thanks,

JAC ALDER

Jac Alder
Executive Producer-Director

A Few of Theatre Three's wishes

- Office supplies (paper, pens, pencils, staples, paper clips, file folders, etc.)
- Industrial shelving for Theatre Three's warehouse, props, and furniture
- Computers with P3 or later processors operating at 500 mhz or faster that can run Windows XP Professional.
- A Sawdust collection system for the shop
- A Volunteer for Part-time Administrative Assistance.

For more information about these wishes or to donate, please contact Greg MacPherson or Kimberly Richard in Theatre Three's administrative office at 214-871-3300, option #2.

THEATRE THREE presents the sixth show of the Mainstage Series of the 2004-2005 season...

By special arrangement with the author, Jeffrey Stanley

Artistic Staff

Director	Terry Dobson
Set Design	Shelly Wahm-Pomme
Lighting Design	Carl Munoz
Costume Design	Ric Leal

Cast

Calvin Barker	*Scott Latham
Dr. Sue Morrison	*Kerry Cole
Swimmer	*R Bruce Elliott
Alabama	**Leslie Patrick
Preacher Bobby	**Dan Nolen, Jr.
Tracy Barker	**Diane Worman

Production Staff

AEA Stage Manager	*Sally Cole
Production Manager	Linda Harrison
Master Carpenter	Jeffrey Schmidt
Carpenters and Painters	Robert Silva, Jackie Elliott, Eric Hopper, Carl Munoz, Harland Wright
Prop Master	Linda Harrison
Electrician	Travis Jones
Production Assistant	**Eric Hopper



By
Jeffrey Stanley

Originally presented as part of the Mill Mountain Theatre/Norfolk Southern Festival of New Works, was commissioned by a grant from Oncology & Hematology Associates of Southwest Virginia, and received its world premiere at the Mill Mountain Theatre on January 21, 2003 with the following cast and crew:

CAST (in order of appearance):

Calvin Barker: Sean Hayden
Dr. Sue Morrison: Janelle Schremmer
Swimmer: Bev Appleton
Alabama: Sarah Dandridge
Preacher Bobby: George C. Hosmer
Tracy Barker: Sarah Yorra

Directed by Jere Lee Hodgin; Set Design by Jimmy Ray Ward
Lighting Design: John Wolf; Costume Design by Angela D. Valerio
Production Stage Manager: Doug Flinchman

*But when Jesus heard, he said to them,
"They that be whole need not a physician, but they that are sick. Go you
and learn what that means." — Matthew 9: 12 — 13*

For Orelia

Scene Synopsis

Time	The present.
Setting	A hospital in southwestern Virginia

There will be one fifteen minute intermission.

The Staff of Theatre Three

Administration

Executive Producer-Director	Jac Alder
Company Manager	Terry Dobson
Director of Business Affairs	Joan Sleight
Computer Services Manager	Nick Rushing
Director of Publications & Communications	Kimberly Richard
Development Associate/ Webmaster	Greg MacPherson
In-House Accountant	Wendy Kwan

Production

Director of Design	Harland Wright
Musical Director	Terry Dobson
Production Manager	Linda Harrison
Master Carpenter	Jeffrey Schmidt
Production Assistants	Melanie Lang, Robert Silva
Intern Staff	Jackie Elliott, Eric Hopper, Michael Speck

Customer Service

Customer Service Director	Amy Mills Jackson
Hospitality and Concessions	Nancy Meeks, House Manager
Box Office Daytime Service Manager	Darius Warren
Box Office Performance Service Manager	Wendy Kwan
Box Office Agents	Sally Cole Ainsworth, Amy Mills Jackson, Tony Banda
Director of Telemarketing	Carol Crosby
Telemarketing Agents	Trinity Johannsen, Roger Wilson, Gabriel Solis

Terry Dobson (Director)

Terry Dobson has been a member of Theatre Three's Artistic Staff since May 1980. He currently serves as Theatre Three's Musical Director and Company Manager. Terry directed (and accompanied) Theatre Three's record breaking smash hit musical revue, *I Love You, You're Perfect, Now Change!* and all of last season's Appetizer Attractions Series productions, *Myths & Hymns*, *Don Juan in Hell*, and *First Lady Suite*. He recently finished directing the first show of The Spotlight Series in Theatre Too!, *Grateful: The Songs of John Bucchino* and the fourth show of the Mainstage Season, *You're A Good Man, Charlie Brown*. Terry has performed with The Dallas Theater Center, Casa Manana, Lyric Stage, and Theatre Arlington. Terry orchestrated and arranged the music for Don Snell's tribute to Noel Coward, *A Private Spirit*, which has been produced in Hollywood, Las Vegas, Dallas, and Phoenix. He traveled to London in 2000 to accompany *The Stuff of Drama* by Niki Flacks. Terry won a Leon Rabin Award — Outstanding Musical Direction — for his work on the musical, *Jon & Jen* and is the recipient of numerous "Column Awards". As an actor, Terry has appeared in Theatre Three productions of *Sylvia*, *Nice People Dancing to Good Country Music*, *Beyond Therapy*, *Death Defying Acts*, *God's Man in Texas* and last season's *Dirty Blonde*.

Shelly Wahm-Pomme (Set Design)

Set designer Shelly Wahm-Pomme volunteered to design the setting for this new show following a meeting with producer Jac Alder who, still practicing a career filled with arm twisting, applied years of experience to the right-handed designer's left arm. Known chiefly for theatre designs in theatre-in-the-round spaces, Ms. Wahm-Pomme (and her husband, Frites Pomme) have retired from their joint architectural practice and, in addition to travel-writing (when they travel) live chiefly for the pleasures of the Arts, especially enjoying their collection of primitive wood sculptures, most of which are from Indonesia.

Ric Leal (Costume Design)

He has performed in several Theatre Three productions, including *Going to St. Ives*, *You're A Good Man, Charlie Brown*, *The Wild Party*, *Side Show*, and *Saturday Night*. Ric Leal made his Theatre Three debut as costume designer for *Seven Keys to Baldpate* and also recently designed costumes for *You're A Good Man, Charlie Brown*. Design credits include local and regional theaters such as Plano Repertory Theatre, The Grand Crystal Palace, and The Gas Light Playhouse. Ric also served as the resident costume designer for Casa Manana Theater in Fort Worth. National credits include over fifty industrial shows and eight seasons of costume design work for the world's largest theme park organization.

Carl Munoz (Lighting Design)

Carl is excited to be designing such a fun show for Theatre Three. He is in the process of moving to Las Vegas to pursue design on a large scale. But he is looking forward to finishing off the season at Theatre Three.

Jeffrey Stanley (Playwright)

Jeffrey Stanley's play *Tesla's Letters* (www.teslasletters.com) world premiered to rave reviews in New York at The Ensemble Studio Theatre, directed by Curt Dempster. It has since been performed in the UK at the Edinburgh Fringe Festival, and in numerous theatres throughout the US. The script has been published by Samuel French which named the play one of the ten best dramas of 1999. His play *Medicine, Man* was commissioned by Virginia's Mill Mountain Theatre and premiered in 2003, directed by Jere Hodgkin. Stanley was a visiting playwright (Copeland Fellow) at Amherst College where he completed his full length play *UFOs Over Brooklyn*. His work has also been performed in New York at LaMama, the Chashama Arts Space, and is frequently read at the Naked Angels tuesdays@nine reading series. He wrote, directed and performed in his autobiographical comedy show *The Golden Horseshoe: A Lecture on Tragedy* which premiered at the Gershwin Hotel's acclaimed 'Live From the Living Room' series in December, 2003.

Stanley's screenplay *Brain On Fire* (www.brain-on-fire.com), which he will direct, has been optioned by producer Matt Myers with casting by Dani Super and John Mabry, and representation by the Gersh Agency. He has also written screenplays for Oscar winning director Barbara Kopple and for Andrew Lauren Productions. Screenwriting awards include the Alfred P. Sloan Foundation Screenplay Award, the New York Picture Company Award for Best Dramatic Screenplay, the Laurel Entertainment Award for Screenwriting Excellence, and a residency at Yaddo.

Stanley has also appeared as a guest writer in the New York Times and in Time Out New York. He is a member of the editorial panel for Boston University's Center for Millennial Studies' first ever scholarly journal on millennialism in pop culture to debut in 2004.

Stanley holds an MFA from the Dramatic Writing Program at New York University's Tisch School of the Arts where he studied under playwright David Ives. He received his BFA in Film & Television Production from Tisch with a minor in cultural anthropology.

Kerry Cole (Dr. Sue Morrison)

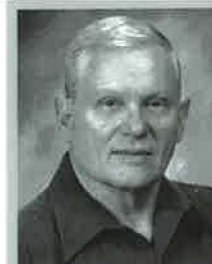
Kerry has appeared in several Theatre Three productions including *How the Other Half Loves*, *Season's Greetings*, and *Infidelities*. At Watertower Theater, she played Mrs. Birling in *An Inspector Calls*, Karen in *Dinner with Friends*, and Mrs. Ravenscroft in *Ravenscroft*. At Plano Repertory Theatre, she played Doris in *Same Time Next Year* and at the Houston Shaw Festival, she played Vivie in *Mrs. Warren's Profession*. She appeared as a guest artist at Richland College, playing M'Lynn in *Steel Magnolias*. She has directed at Circle Theatre, Irving Civic, Richardson Community Theater, Wayside Theatre, and Richland College. Kerry has also taught at Richland College, UTD, TWU, Eastern New Mexico University, and University of Central Arkansas. Look for Kerry in the upcoming film, *Veritas, Prince of Truth*. "For 'Spoons'".

R. Bruce Elliott (Swimmer)

After graduating from Austin College, Bruce's first show was at Theatre Three (*Jack and the Beanstalk*). He did not appear at Theatre Three for another eighteen years. He has since appeared in several Theatre Three productions including *Mrs. Warren's Profession*, *Assasins*, *Born Yesterday*, *Rise and Shine*, and *Triumph of Love*. Other theatre credits include Uncle Johnny in *A Country Life* and Big Daddy in *Cat On A Hot Tin Roof* at WaterTower Theatre, *Jacques Brel Is Alive and Well* and King Henry in *The Lion in Winter* at Stage West, Thurston (and a variety of other roles) in *Greater Tuna* at the Anatole Hotel in Dallas. He has also played Ben James in *I Am A Teacher* across the country. On film, he has appeared in *JFK*, *Fletch Lives*, *The Chase*, *Carried Away*, *Dr. T and the Women*, and *Finding North*. On television, he played Mr. Tenagain on *Barney and Friends*, and appeared in *Walker Texas Ranger*, and the CBS movie, *Murder in the Heartland*. He has won three Dallas Theatre League Leon Rabin Awards: Best Actor in a Musical, Best Actor in a Play, and Best Supporting Actor in a Musical, all for work at WaterTower Theatre.

Scott Latham (Calvin Barker)

Scott last appeared on Theatre Three's stage as Pale in *Burn This*. He has appeared at many Dallas area theatres including at Wingspan Theatre playing Dr. Simian in *Wildwood Park*, Our Endeavors Theater Company playing Alice B. Toklas in *What Happened*, Actors' Stock Company playing Alchonon in *Teibele and Her Demon*, and Teatro Dallas playing Saul in *Profane Games*. Scott has awarded the Dallas Critics Forum Awards for Outstanding Performance for Theatre Three's *Burn This* and Actors' Stock Company's *Teibele and Her Demon*. He is represented by the Horne Agency.

Dan Nolen, Jr. (Preacher Bobby)

Audiences may remember Dan playing Thomas Hayden in the first Theatre Three production of the 2004-2005 season, *Seven Keys to Baldpate*. His stage experience includes playing Norman Thayer, Jr. in *On Golden Pond* at OnStage in Bedford, Governor in *The Best Little Whorehouse in Texas* in Mansfield, Grandpa Vanderhof in *You Can't Take It With You* at Artisan Center Theater, Olive Warbucks in *Annie* and Henry Perkins in *Funny Money* at Grapevine's Runaway Theater. Besides appearing in several commercials and industrials, he appeared in the films *Eye 4 An Eye* and *Serving Sara*. Dan retired IBM after 30 years. He would like to thank his wife Connie for her love and support.

Leslie Patrick (Alabama Saunders)

Leslie is making her Theatre Three debut in *Medicine, Man*. Some of her other favorite theatre roles include Woman in 52 *Pick-Up* in Act I Productions, Donalbain in *Macbeth* at Bucket Productions, Harriett in *Boy Gets Girl* at Echo Theatre, Sharla in *Mismatched* at Pegasus Theatre, Olga in *Stage Door* at Plano Repertory Theater, and Gail Reed in *It's Beginning to Look A Lot Like Murder* at Step Lively Productions at the Darrell Roth II Theatre in New York. She has done seven black and white shows with Pegasus Theatre and was one of the makeup artists for the recent Irving Community Theatre production.

Diane Worman (Tracy Barker)

This Baylor University and Actors Theatre of Louisville graduate is making her Theatre Three debut. Previous theatre experience includes Mrs. Capulet in *Romeo and Juliet* at Classical Acting Company, Carol in *Laughter on the 23rd Floor* at Stage West, Sue Stephens in *Down South* at Uptown Players, Sandy in *A Thousand Clowns* at Theatre Arlington, Mary in *Urgent Fury* at Kitchen Dog Theatre's New Works Festival, and Fraulein Mittle in *Infinity's House* at Actor's Theatre of Louisville. She has been featured in several national voiceovers including Lipton Iced Tea and Mott's Apple Juice. Diane is represented by Kim Dawson Talent Agency. She would like to dedicate this show to her family who lost her mother, Dottie, to cancer last year. "I love you all so much."



Medicine, Man is a dark comedy inspired by the death of my maternal grandmother, Ethel Orelia Ferguson, and that impact on my immediate family.

My brother, sister and I were born in the Blue Ridge Mountains of southwest Virginia and raised in a single parent home by mother. We were all very close to my grandmother who helped raise us and who shared a house with us for a few years when I was young, so I got to know her very well. My grandmother was out picking tobacco at the age of four and had an eighth grade education. She shamelessly chain smoked, told dirty jokes, regularly read the Bible and insisted we were part Cherokee. There is also a lot of my grandmother in protagonist Calvin Barker.

I also had to do a good deal of research for the play. Although it's a dark comedy I wanted the elements to hold water, and that meant making sure Ola Mae's medical condition and accompanying symptoms were accurate. It meant making sure the ethical issues surrounding dialysis were grounded in reality. I consulted an MD in my present home of New York City and a nephrologist in my hometown of Roanoke, Virginia where the play is set. I also spent time in the nephrology intensive care unit of my hometown hospital observing doctors and nurses and chatting with patients. Additionally, I read six books on medical ethics which were recommended to me by physicians. All of this research fed into my creation of the character Dr. Sue Morrison.

Swimmer, or Ayunini, is based on a real Cherokee medicine man. I became aware of his existence several years ago while researching an historical screenplay I was writing. This fascinating shaman was probably the last of the Cherokee medicine men. He achieved immortality in the 19th century after he finally agreed to reveal the secret prayers, chants and rituals of Cherokee healers to white anthropologist James Mooney before this knowledge was lost forever. Swimmer's healing knowledge was originally printed as *The Swimmer Manuscripts* and can be found in Mooney's book *History, Myths and Sacred Formulas of the Cherokees* published by the Smithsonian Institution. Swimmer's physical appearance as I have described him in the play is based on his photograph in this book, and one of his actual prayers appears in the second act of my play. I read three other books on ancient Cherokee medicine and spiritual beliefs, and was surprised to learn that at one time the Cherokees believed in a form of reincarnation. This immediately called to mind the philosophies found in Hinduism, so I reread the Hindu holy book the *Bhagavad Gita*, I book I had first read as a teenager. Soon, my version of Swimmer, infused with a blend of Cherokee and Indian mysticism, was hanging out in Ola Mae's room in the pages of my script, waiting eagerly to confront the characters about their previous lives and the ones to come.

When my grandmother died suddenly over the course of a single day I was living in New York City and faced with the sad reality that it would be impossible for me make it home to Virginia in time to see her before she passed away. At her moment of death, most of my family was gathered round her bed except for me. I think my guilt about not being there to say goodbye led me to write this play. It's my imagining of what might have been going on at the hospital with my family over that 24 hour period.

That said, the play is not directly autobiographical, the characters and situations are fictional, and hopefully universal to anyone who has lost a loved one and hit the boundaries of faith, medicine and faith in medicine. Still, no eulogy to my grandmother would be appropriate without laughter.

-Jeffrey Stanley, 2005

YES!

List my name in support of Theatre Three's **THE PHOENIX CAMPAIGN**, Theatre Three's annual drive for operating support. I'd like to help as follows:

☐ (for gifts of \$1,000 or more)

PRODUCER'S COUNCIL MEMBERSHIP

(to support production costs for sets, lights, costumes, and designers)

☐ (for gifts of \$500 — \$999)

DIRECTOR'S COUNCIL MEMBERSHIP

(to support outreach, audience development and artistic administration)

☐ (for gifts of \$250 — \$499)

ACTOR'S BENEFACTORS

(to support salaries and benefits for the resident acting company)

☐ (for gifts of \$125 — \$249)

AUTHOR'S BENEFACTORS

(to support royalties to composers, lyricists, and playwrights)

☐ (for gifts of \$50 — \$124)

BACKSTAGE BENEFACTORS

(to support stipends for Theatre Three's intern staff)

Write your total contribution in the blank...

\$ _____

Donor Information

Name: _____

Patron Number: _____

Address: _____

City: _____ State: _____

Zip Code: _____

How would you like your name to appear in the program?: _____

☐ Check here if you wish your gift to be anonymous.

Payment Information

☐ My check is enclosed for the full donation OR

☐ Charge my donation to ☐ Visa ☐ Discover ☐ MC ☐ AMEX

Credit Card # _____

Expires _____

☐ Check here if you would like your gift to be charged in three equal payments. We'll charge one third of the gift upon receipt, and one third in each of the two following months.

Bring or mail to
Theatre Three 2800 Routh Street, Suite #168
Dallas, Texas 75201

Dear Playgoer,
"Save your forks, there's pie!"

That was what my grandmother used to say at big family meals when she had the time and the ingredients to make dessert. You probably have a similar family recollection. Remember how having heard the "pie alert", kids around the table watched closely to see that the pie was evenly sliced with everyone getting his fair share? My grandmother was scrupulous about fairness and doled out equal portions down to the smallest crumb!

You've been reading, I suppose, that Dallas has a very tasty cultural pie to slice these days. It's true the economy continues to depress corporate and government contributions. You can bet that's still excruciatingly painful here at Theatre Three. Still, you and I read almost daily of remarkable gifts from individuals contributing to new buildings proposed for the Arts District. Hooray! I'm a believer in building for the future. The planning seems smart and important.

It takes nothing away from my genuine enthusiasm for the Arts District, though, to point out the virtue (and practicality) of my grandmother's approach to pie slicing. With our annual fund drive, The Phoenix Campaign, Theatre Three is sitting at the philanthropy table ... and hoping for more than crumbs. *We'll have over three hundred performances on stage this season here: all will use professional Equity actors who make their homes in North Texas.* The schedule includes new plays, classics, revivals, musicals, staged readings and world premieres. Our season is year-round so there's always something on stage for you and for visitors to Dallas. ***Theatre Three's building is the busiest performance venue in Dallas — possibly in the state!***

The slices of the Phoenix pie don't go to buildings, but to programming: to interns, actors, designers, directors, and playwrights. To the art, fun, and vigor of the performances. Perhaps I'm being overly lighthearted to stretch the dessert metaphor and say "our pie needs dough!" But, you know, that's really the case!

I've saved my fork. Help get the pie sliced fairly. Please give generously to this year's Phoenix Campaign.

Yours truly,

JAC ALDER

Jac Alder
Executive Producer-Director

Producer's Council Membership

Ruth & Ken Altschuler, Mr. Bill Bond, Mr. & Mrs. J. Roland Dykes, Fannie & Stephen Kahn Charitable Foundation, Stan Graner & Jim McBride, Mr. & Mrs. John Hauge, Mina W. Jacobs, Emily Jefferson, Mr. & Mrs. Edwin B. Jordan, Mr. David G. Lulher Jr., Mr. & Mrs. Tom H. McCasland Jr., David & Catherine McCue, Mr. John McLean, Mr. & Mrs. Ross Perot, Mr. William Windsor Richardson, Peggy L. Townsley, Laura Jeter Weems

Director's Council

Ida Jane & Doug Bailey, Lawrence & Elizabeth Barron, Martin Camp, Paul Coggins & Regina Montoya, Mr. & Mrs. George Dawson, Ms. Barbara S. Foreman, Gary W. Grubbs, Mr. & Mrs. Stephen B. Hauge, Christiane Hepler, Trudy & Charles Hess, Mrs. Jo Kurth Jagoda, Margaret & Dick Krutzenga, Mrs. June Morgan, Miss Jeanne F. Shelby, Chris & Lisa-Gabrielle Westfall, Charles W. Yates

Actor's Benefactors

Mr. & Mrs. Philip Askew, Susan E. Barkley, Mrs. Pat Barr, Stan & Sue Baxley, Ralph & Jo Blackburn, James Lee Blackwell, Drs. Steven & Jane Blair, Mr. & Mrs. Dennis Bosch, Mr. & Mrs. Gregory K. Boydston, Lee Buehrer, Mr. Thomas B. Cornell, Carol Croy, Mr. & Mrs. William A. Custard, The Cutshalls, Brig. Gen. & Mrs. Harry J. Dalton, Jr., Mr. & Mrs. Peter J. Denker, Dr. & Mrs. J.B. Doak, Bobby & Anne Fincher, Ms. Lynn Frank, Mr. & Mrs. Richard Gailand, Ms. Jennifer Garza, Harriet Halsell, Ann B. Hauge, Ms. Jean B. Hecht, Gloria H. Jacobus, Dr. & Mrs. Norman Kaplan, Mr. & Mrs. Richard Karm, Mr. & Mrs. Patrick Kelly, Mr. Stephen A. B. Krani, Louise W. Kahn Endowment Fund, Casey & Megan McManemin, Ms. Judy Meagher, Mr. & Mrs. Kyle Messerschmitt, Mr. & Mrs. Scot Milvenan, Marion and Stewart Mitchell, Arlene & Louis Navias, Mr. & Mrs. Marcus O. Nordberg, Robert Olson, Ellen Osburn, Shirley Pollock, Mr. Paul Ridley, Dr. & Mrs. Colin Romie, Laura B. Saunders, Mr. & Mrs. Karn S. Schmidt, Mike & Anne Skipper, Mr. & Mrs. Robert S. Sloan, Mr. & Mrs. Marvin S. Sloman, Mr. & Mrs. David L. Smith, Mr. William G. Smith, Brenda and Nelson Spencer, Mrs. Conni & Bill St. Angelo, Frank Sulzbach, Mr. Edward B. Summerhill, Margaret Sunderland, Leland Turner, Daniel Van Pelt, Patricia A. Vaughan, William & Julie Wilkinson

Author's Benefactors

Ruth Andres, Ms. Bettye C. Barnes, Dr. & Mrs. Vincent P. Ban, Catherine B. Bass, Dr. & Mrs. Steven A. Bell, Ray & Joan Brammer, Mr. Bill E. Carter, Kay & Elliot Cattarulla, Kay Champagne, Mr. & Mrs. Lester Chu, Ms. Lee B. Culum, Ms. Cynthia Cummings, Pauline & Amon DeNur, Mr. & Mrs. Michael W. Dill, Ms. Delia Dusan, Robert & Carol Eberhart, Dr. & Mrs. James Erickson, Jeff & P.J. Ericson, Mr. & Mrs. Sanford Fagadau, Dr. & Mrs. Phillip Fischer, Chris & Lisa Fox, Edith and Gary Fritzsche, Mr. & Mrs. John E. Garrett, W. John & Jane Glancy, Robert & Barbara Goodman, Ed & LeAnn Greer, Elaine & Gary Gross, Mr. & Mrs. Dick Grote, Mr. Alex Hamerman, John Harbin, Mr. & Mrs. Jack W. Hawkins, Hermann Family, Sheryl & Stan Hopkins, Mr. & Mrs. Ed Howard, Barbara Hustis, Dr. & Mrs. Arthur Ingalls, Mary Anne Ingram, Matt C. Jansha, Susan & Gene Johnson, William P. & Elaine Johnson, D.S. & June Jones, Dr. Sondra Kaufman, Ms. Charlotte Kelly, Mr. & Mrs. Joseph J. Kuhlmann, Dr. & Mrs. S.O. Livingston, Ada Lynn, Nicholas Magnis, Mr. & Mrs. Robert O. Magruder, Gwyn & Wilson Mason, Ms. Katherine L. Maxwell, Lucy H. McMasters, The Harvey & Joyce Mitchell Family Foundation, Erika & Joel Nannis, R.H. Perry, James & Constance Peterman, Sheila M. Peters, Dr. &

Mrs. Peter C. Ray, Mr. W. Richard L. Russell, Mr. Glenn Samford, Mr. & Mrs. J. Richard Sanderson, Rex A. Sebastian, Fred & Betty Secker, Grace & Roger Secrest, Ms. Janet Spencer Shaw, Ms. Helen M. Sindermann, Evelyn Smith, William P. & Billie L. Sparks, Mr. & Mrs. Eugene & Marge Stockton, Pat Stodghill, Billie Stone, Pat Tarpley, Mr. & Mrs. Robert Tobey, Barry & Karen Uhr, Mr. & Mrs. Gerald Vokolek, Mr. & Mrs. Leonard Volk, Mr. Kimberly Mark Webb, Edith Wells, Mr. & Mrs. John T. Willett

Backstage Benefactors

Sarah Andriani, Mr. & Mrs. Harold R. Avery, Pat Baker, Jr., Linda Baker, William H. Barris, John P. Bell, Jr., Mr. & Mrs. Lawrence G. Besson, Barbara & Paul Bierbrier, Rita Blasser, Eleanor Blazon, Mr. & Mrs. Duncan Boeckman, Charles & Diana Briner, Thomas & Jean Brown, Mr. & Mrs. Parks & Christi Campbell, Martha W. Cargill, Susan & T.A. Carnell, Doris Cheshier, Kim Cheshier, Pam Colley, Billie Cook, Cory Coons, David Copeland, Mr. & Mrs. Robert Culmer, Dr. Larry Ehemann, Mrs. Dorothy G. Elliott, Boyce & Pat Farrar, Wanda Farris, Martha Fergeson, Mr. & Mrs. Richard L. Fleming, Joan Friedman, Evelyn Gage, Mr. Les Geiler, Doug & Linda Gilpin, Dr. & Mrs. M.S. & Patty Ginsburg, Gail & Ian Glen, Eileen & Joel B. Goldstein, Gloria & Philip Gray, Mr. Fred Grinnell, Robert & Janet Haddler, Mr. & Mrs. Mark Hadley, Mr. & Mrs. Arvel Haley, Mr. & Mrs. Bob Halpin, Jim & Ann Hambleton, Elsie M. Hams, Ms. Barbara Hauge, Mr. & Mrs. John M. Hebley, Mr. Pat Henley, Cheryl & Morley Herbert, Bob & Barb Herbison, Mr. & Mrs. Ennis B. Hill, Dr. & Mrs. Charles Lloyd Hughes, John & Rusty Jagers, Dr. & Mrs. Warren C. Johnson, Ms. Carolyn Kacena, Dan & Susan Kaster, Joyce & Howard Kom, Caryn Korshin, Mary Kretzinger, Peggy Ladenberger, Ph.D., James A. Latham, Jr., Mr. & Mrs. Peggy Learner, Jerome and Brenda Leys, Tommy Looney, Dr. & Mrs. Richard Mabry, Greg MacPherson, Fred & Ann Margolin, Delores Martin, Ms. Barbara F. Materka, Bob & Carol Maxwell, Myrna & John McCully, Ms. Paige McDaniel, Buzz & Kathy McDermott, Ms. Marcia J. McGoe, Mr. & Mrs. Charles R. McKnight, Ms. Hilda S. McLaughlin, Leland & Mary Mebine, Jerry & Maryanne Meltzer, Dr. & Mrs. R. F. Mensel, Jim & Pat Mitchell, Ms. Melissa A. Mitchell, Mr. & Mrs. Stewart Muskett, George & Judy Nassif, Bill and Elya Naxon, Joe & Pauline Neff, Carol & James Norris, Mr. & Mrs. Rudy Norris, Petey Parker-File, Yvonne & Dale Perkins, Larry and Carol Peters, Ms. Adrienne Pokorny, Pat Polk, Mrs. Frances W. Prasil, Ms. Sue Prather, Ms. Jeanne M. Rasco, Andy & Jean Raub, Mr. & Mrs. Richard A. Reed, Ms. Ann Reeves, Irvin M. & Patricia C. Rice, Catherine Ritchie, Conrad & Dana Roark, Howard Ross, Phyllis & Elliott Ross, Mr. & Mrs. John Rowley, Mr. & Mrs. Warren Rubin, Dr. & Mrs. Jay P. Sackler, Mr. & Mrs. Luther Sappenfield, Ms. June Saucer, Jules & Hazel Schoenberg, Mr. & Mrs. Richard Scott, Donald W. Seidman, Rudy & Jean Seward, Joann P. Shull, John & Betty Silander, Mr. Charles W. Smith, Val & Sylvia Smith, Ms. Patricia L. Stahl, Mr. & Mrs. Theodore Paul Steinke Jr., Mr. & Mrs. Douglas G. Stephan, Freda Gail Stern, Mr. & Mrs. Donald J. Stone, Dr. & Mrs. Marvin J. Stone, Ms. Jean Sturman, Tom Sullivan, J.W. Sutherland, Ms. Elizabeth H. Sword, Mr. & Mrs. Gus Taylor, Mr. & Mrs. John B. Tolle, Carole Trocchio, Ms. Barbara S. Turner, Pam Venne, Rebecca & Donny Walker, Mr. & Mrs. Thomas E. Walker, Dr. & Mrs. Otis W. & Betty J. Ward Jr., Mr. & Mrs. Jim Wear, Ms. Marlene Webb, Louise Wells, Virginia Whitehill, Ms. Katharine G. Williams, Robert S. Williams, Jenna Vee Worthen, Ms. Ellen Ogden Young. *These donations are as of March 5, 2005.*

The Dallas Morning News and

WFAA-TV, Channel 8 are proud

to serve our community by

informing, educating and

entertaining our readers and viewers.

We Applaud You

and we are inspired by

organizations like yours, who

continually entertain us.

Congratulations for a job well done.

WFAA



THE SPIRIT OF TEXAS

The Dallas Morning News

DallasNews.com

The 2004-2005 Mainstage Series

Seven Keys to Baldpate, a mysterious melodramatic farce by George M. Cohan July 8 - August 14, 2004

America's master showman's masterpiece of fun fills the stage with mysterious and wildly eccentric suspects isolated in an oddly managed inn on a dark and stormy night.

The Tale of the Allergist's Wife, a new Broadway comedy by Charles Busch August 26 - October 2, 2004

Unda Levin was hilarious in the hit Broadway run of this contemporary comedy playing a doctor's wife who has everything but not all of it good.

Rounding Third, a new comedy from Chicago by Richard Dresser October 14 - November 20, 2004

Two little league coaches, one crusty and demanding, the other playful and idealistic form a wary but meaningful relationship as they compete to shape their team according to their individual beliefs.

You're a Good Man, Charlie Brown, a musical by Clark Gesner December 2, 2004 - January 15, 2005

The 1999 Broadway version of the beloved show (based on the '60s off Broadway hit) that won two Tony awards with its two new songs and 23 new vignettes by the comic strip genius, Charles Schultz.

Going to St. Ives, a thrilling drama by master playwright, Lee Blessing January 27 - March 5, 2005

A British woman (an eminent surgeon) is asked to treat an African woman, the mother of a vicious dictator. Secrets both hold lead to a passionate clash and force negotiations of life and death, motherhood and politics, gender and nationality.

Medicine, Man, a fresh new comedy by Jeffrey Stanley March 17 - April 23, 2005

Responsibility doesn't sit easily on our hero, a NASCAR fan fond of his beer, country music, and a somewhat tawdry girlfriend. But he's in charge when mom is stricken unconscious and must wrestle the opinions of his social climbing twin sister, the uncertainty of the doctor, a preacher man of dubious ethics, and a mysterious stranger in ancient Indian regalia.

Putting It Together, by Stephen Sondheim May 5 - June 11, 2005

Both Carol Burnett and Julie Andrews headed casts of this ingenious revue, a magical compilation of maestro Sondheim's incomparable theatre songs put in fresh context for a performance of thrilling musicianship and fresh power.

The 2004-2005 Appetizer Attraction Series

A Woman of Independent Means, by Elizabeth Forsythe Hailey September 12 - September 21, 2004

From the pen of a Dallas native, a fascinating narrative based on a member of her own family.

A Christmas Memory, by Truman Capote December 19 - December 29, 2004

From the pen of America's great novelists, a recollection of a Southern childhood.

Merrily We Roll Along, by Stephen Sondheim April 3 - April 13, 2005

An investigation of long-term friendship of talented, energetic people filled with Sondheim's most emotional score.

The 2004-2005 Spotlight Series

Grateful: the songs of John Bucchino, a musical revue devised by Terry Dobson October 21 - October 31, 2004

This will be a world premiere cabaret production.

Dear Liar, by Jerome Kilty February 3 - 13, 2005

A dramatization of extraordinary letters between George Bernard Shaw and actress Mrs. Patrick Campbell. To star Terry Vandivort.

Old Wicked Songs, by Jon Marans May 12 - 22, 2005

A revival of the 1999 hit comedy-drama that starred Joe Alder and Ashley Wood in audience-and-actor-favorite roles.