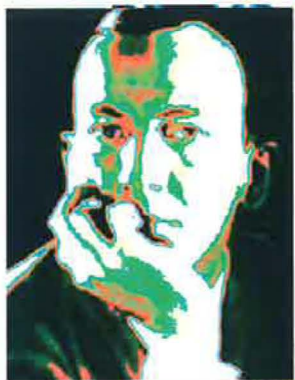
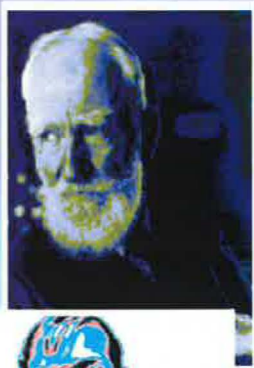


THEATRE THREE

THE theatre-in-the-round at the Quadrangle



Jac Alder, Executive Producer-Director, presents
2005-2006 SEASON B.C. TO A.D. -TALES OF THE GREAT STORYTELLERS



THE IMAGINARY INVALID

By Molière, new English language version by Jac Alder August 25 — October 1, 2005



ELEGIES: A SONG CYCLE

By William Finn September 4 — 14, 2005

2800 Routh Street, #168
Dallas, Texas 75201
Box Office: 214-871-3300, option 1
Administration: 214-871-3300, option 2
Administration Fax: 214-871-3139
Direct Sales: 214-871-3300, option 3
Email: admin@theatre3dallas.com
Web page: www.theatre3dallas.com

Regarding Theatre Three...

Theatre Three is a 501(c)3, not-for-profit cultural institution founded in 1961 by Norma Young. It serves to celebrate and honor the three essentials of theatre for which she named it: gifted playwrights, talented theatre artists, and adventurous audiences.

Regarding this performance...

- Concessions are available in the lobby.
- Cameras or recording devices of any kind are prohibited.
- Please turn off (or silence) all cell phones and pagers.
- Please remember that talking during performances disturbs fellow theatre-goers.
- No late-comers will be seated once the performance commences.
- Please finish refreshments in the lobby.

For theatre goers with disabilities...

- Please feel free to call upon our staff for assistance.
- Wheelchair locations are available.
- Half of the seats may be reached by aisles with handrails.
- A wheelchair-accessible restroom is next to the box office.
- Handicapped parking is next to the Dream Café and the new East Wind Restaurant.

Regarding parking...

All parking is free. Surface parking surrounds The Quadrangle.
Garage (tower) parking is accessible just off Routh on Laclede Street.

THEATRE THREE'S BOARD OF DIRECTORS:

Jeff Sanders, Chair; Jac Alder, Martin L. Camp, Angela V. Choquette, Michael Davis, Jim Dow, Roland & Virginia Dykes, David Forsythe, Gary W. Grubbs, Matt Jansha, Jeannine Lee, John Lilley, David G. Luther, Sonja J. McGill, Elizabeth Rivera, Enika Pearson Schulze, Janet Spencer Shaw, Karen Washington, Patsy P. Yung



The Dream Café

2800 Routh Street, Dallas, Texas 75201
Next door to Theatre Three
214-954-0486

We gladly take reservations for theatergoers in a hurry!

The playbill is a publication of Theatre Three, Inc. 2800 Routh Street., #168 Dallas, Texas 75201.
This Theatre Three playbill is published for

- **The Imaginary Invald** by Molière, new English language version by Jac Alder, the second show of the Mainstage Series of the 2005-2006 season.
- **Elegies: A Song Cycle** by William Finn, the first show of the Appetizer Attraction Series of the 2005-2006 season.

Cover art by Harland Wright and MPH Printing & Promotional Products
Playbill Editors: Jac Alder, Kimberly Richard

Pictured on the cover are a few of our great storytellers: top row: Agatha Christie & George Bernard Shaw, 2nd row: Noel Coward & Truman Capote, 3rd row: Molière, Ovid, & Joe DiPietro, 4th row: William Finn & Stephen Schwartz

**Time to say farewell to your car, truck, boat,
motorcycle or trailer?
Then please donate it to Theatre Three!**

CARS INTO
COSTUMES!



AUTOS INTO
ART!



Even if it doesn't run any longer, donate your vehicle, and we'll tow it at no cost too! The money will provide much needed funds for costumes...or medical coverage for an actor. And you get to deduct the *maximum* blue book value regardless of condition!

Call 214.871.2933



THE IMAGINARY INVALD

By Molière, new English language version by Jac Alder August 25 — October 1, 2005



ELEGIES: A SONG CYCLE

By William Finn September 4 — 14, 2005

THEATRE THREE presents the first show of the Appetizer Attraction Series of the 2005-2006 season...

Produced by special arrangement with Samuel French, Inc.

Elegies A SONG CYCLE

By
William Finn

Originally produced by
Lincoln Center Theatre,
New York City

Artistic Staff:

Director/Musical Director | Terry Dobson

Cast:

Amy Anders Corcoran, Gary Floyd, Donald Fowler, *Sally Soldo, *Wendy Welch

Production Staff

AEA Stage Manager
Production Manager & Prop Master
Production Assistant
Rehearsal Pianist

*Terry Vandivort
Linda Harrison
Lane Mooney
Jeff Crouse

Musical Numbers

Looking Up	Company
Mister Choi & Madame G	Gary (with Donald & Amy)
Looking In	Wendy & Sally
Mark's All-Male Thanksgiving	Donald
Only One	Wendy
Peggy Hewitt & Mysty Del Giorno	Donald, Gary, Wendy, & Sally
Passover	Amy
Infinite Joy	Sally
Joe Papp	Gary & Company
Monica & Mark	Gary, Donald, & Wendy
Anytime	Wendy
My Dogs	Sally
Venice	Donald
Fred	Amy & Gary
14 Dwight Ave, Natick Mass	Sally & Donald
When the Earth Stopped Turning	Donald
Saying My Goodbyes (Part I)	Gary
Boom Boom (Part I)	Sally
Saying My Goodbyes (Part II)	Gary
Boom Boom (Part II)	Company
Looking Up	Sally
Finale	Company

There will be no intermission for this production.

Terry Dobson (Director / Musical Director)

Terry Dobson has been a member of Theatre Three's Artistic Staff since May 1980. He currently serves as Theatre Three's Musical Director and Company Manager. He has been a musical director for over 100 musicals, including last season's *Putting It Together*.

Terry directed (and accompanied) Theatre Three's record-breaking smash hit musical revue, *I Love You, You're Perfect, Now Change!* and all of last season's Appetizer Attractions Series productions, *Myths & Hymns*, *Don Juan in Hell*, and *First Lady Suite*. He directed the first show of The Spotlight Series in Theatre Too!, *Grateful: The Songs of John Bucchino*, the fourth show of the Mainstage Season, *You're A Good Man, Charlie Brown*, and the sixth show of the Mainstage Series, *Medicine, Man*. Terry has performed with The Dallas Theater Center, Casa Manana, Lyric Stage, and Theatre Arlington. Terry orchestrated and arranged the music for Don Snell's tribute to Noel Coward, *A Private Spirit*, which has been produced in Hollywood, Las Vegas, Dallas, and Phoenix. He traveled to London in 2000 to accompany *The Stuff of Drama* by Niki Flacks. Terry won a Leon Rabin Award — Outstanding Musical Direction — for his work on the musical, *Jon & Jen* and is the recipient of numerous "Column Awards". As an actor, Terry has appeared in Theatre Three productions of *Sylvia*, *Nice People Dancing to Good Country Music*, *Beyond Therapy*, *Death Defying Acts*, *God's Man in Texas* and last season's *Dirty Blonde*.



William Finn (Composer)

William Finn, a graduate of Williams College, is an Adjunct Faculty Composer/Lyricist at New York University and also works as an independent composer and writer. His work includes *In Trousers*, *March of the Falsettos*, *America Kicks Up It's Heels*, *Dangerous Games*, *Romance in Hard Times*, *Falsettoland*, *Falsettos*, and *A New Brain*. His most recent work, *The 25th Annual Putnam County Spelling Bee*, which diverges from the highly autobiographical themes of his previous work, won Finn a Tony Award for Best Musical and Best Original Score.

Amy Anders Corcoran



Amy is thrilled to be back at Theatre Three as a true Texan, after playing Elaine in *Arsenic and Old Lace* in 2003. Favorite regional roles include Annie in *Annie Get Your Gun*, Polly in *Crazy for You*, and Rizzo in *Grease*. She thanks Terry for this fantastic opportunity with these amazingly talented people. Love to Scott, family, friends, and prayers to all the victims and families of 9/11.

Gary Floyd



Gary is happy to be returning to Theatre Too! having most recently appeared as Charley in *Merrily We Roll Along*. Gary has also been seen as David in the regional premiere of *King David* with Lyric Stage, *The Rocky Horror Show* at Contemporary Theatre of Dallas, and L.M. in *Pumpboys & Dinettes*, for which he received the 2004 Leon Rabin Award for Supporting Actor in a Musical. He is currently represented by The Horne Agency.

Donald Fowler



Donald Fowler is so pleased to finally be back at Theatre Three. Previously at Theatre Three, Donald could be seen in *I Love You, You're Perfect, Now Change!*, *Saturday Night*, and *The Boyfriend*. Most recently, Donald played Harry in Pinter's *The Collection* as part of the Bathhouse Cultural Center's F.I.T. Festival. Other roles include Molina in *Kiss of the Spiderwoman*, Betty/Edward in *Cloud 9*, Bobby in *Company*, Gordon in *A New Brain*, Marvin in *Falsettos*, Homer in *Floyd Collins*, the Emcee in *Cabaret*, Fleet in *Titanic*, Anatoly in *Chess*, and Pirelli in *Sweeney Todd*. Most recently Donald performed his one-man show *Jacket Required* as part of Addison WaterTower's Out of the Loop Festival and is currently working towards remounting the show in 2006. Special thanks to Jac and Terry for the encouragement and support.

Sally Soldo



Sally Soldo is thrilled to return to Theatre Three, where she has appeared in more than 20 musical productions including *Putting It Together*, *A...My Name is Alice*, *Triumph of Love*, *Assassins*, *Lucky Stiff*, *Company*, *Into the Woods*, *A Little Night Music*, *I Love You, You're Perfect...Now Change!*, and most recently, *Grateful, The Songs of John Bucchino* and *First Lady Suite*. She appeared as the Guest Artist for the Turtle Creek Chorale's 21st Anniversary Concert at the Morton H. Meyerson Symphony Center, *The Music of Sondheim*. Sally has appeared Off-Broadway, worked extensively in industrial productions, and has toured nationally in *George M!* and *Play It Again, Sam* opposite Robert Morse. Regionally, she has starred in *Man of La Mancha*, Burt Reynolds Jupiter Theatre; *West Side Story*, Golden Apple, FL; *The Merry Widow*, Carousel, OH; *I Do, I Do*, Hacienda, TX; *Pajama Game*, Music Theatre of Wichita, as well as appeared in The Dallas Summer Musicals (25 productions), Lyric Stage, Casa Manana, Dallas Repertory Theater, Garland Summer Musicals, Theatre Under the Stars, Chanhassen Theaters, and the Starlight Musicals. Sally has been awarded the Leon Rabin Award, *The Dallas Times Herald* Theater Critics Best Actress Award, the Column Award, and has been a nine-year "Dallas Diva" for Lyric Stage. Ms Soldo makes her home in Dallas with her husband, Jon Veon, and son, Jonathan.

Wendy Welch



Wendy Welch, Dallas native and SMU theatre grad, has performed leading roles in theatres all over the metroplex for more years than she'd like to admit. Last season she was honored with the Leon Rabin Award for her multiple roles in *The Dining Room*. She and her actor/singer/songwriter husband, Willy, have sung as a duo in folk clubs in NYC, and pretty much everywhere from the middle of the country to the east coast. They have 3 recordings. Wendy teaches Musical Theatre at Richland College, and private voice. She carries this tradition on from her Mother, the late Anne Jackson, for whom there is a memorial plaque in the lobby of this theatre. She dedicates this performance to her beloved Mother. She is elated to be singing, with these talented friends, the music of her husband's old school buddy, Billy Finn. Support live theatre!

THE QUICK & CAJUN ALLIGATOR CAFÉ



Get your tail down here!

**4416 Live Oak
Dallas, TX 75204
214.821.6900**

eatgator.com

EVERYONE KNEW MOLIÈRE WAS DYING WHEN HE WROTE ***THE IMAGINARY INVALID.***

His wife, Armande Béjart, begged her ill husband not to perform the lead role in this new comedy. Even though he had been suffering from some sort of lung disease, Molière would not listen. He traditionally played the role in his own shows and relished the idea of a very ill man playing Argan, a perfectly healthy man who thought of himself as terribly sick. The show was a biting satire about the medical profession, but the show would become famous as Molière's last show. On February 17, 1673, Molière was preparing for the fourth performance of *The Imaginary Invalid* when he suffered a hemorrhage. He managed to perform, but only hours after the performance, he died at home. Because some of his earlier work had been so critical of the clergy, no priest would officiate and many balked at the idea of him even being buried in sacred ground. The King intervened and a compromise was reached: Molière was buried in the middle of the night at St. Joseph's Cemetery on February 21, 1673. Seven years after Molière's death, the King joined Molière's company with a competing company to create Comédie-Française. Today it is the French national theatre and often referred to as the House of Molière.

Elegy: (noun) 1. A song or poem expressing sorrow or lamentation especially for one who is dead. 2. A short pensive musical composition.

Poets and songwriters use elegies to find a way to say just the right thing in one of life's most emotional moments. Whether it is a national tragedy or a deeply personal, intimate loss, elegies reflect the humanity of death and loss. When Walt Whitman wrote "When Lilacs Last in the Dooryard Bloom'd", he was reflecting on one of America's greatest tragedies, the assassination of Abraham Lincoln. The poem is a recollection of the famous funeral procession of a man Whitman considered a hero. While the tragedy had an impact on the entire nation, the elegy is more personal and makes the loss of Lincoln more intimate to individuals. When Alfred Lord Tennyson wrote an elegy for his closest friend and his sister's fiancé, he was writing about a deeply personal loss. He simply titled it "In Memoriam" and while the readers may not specifically know the man who died, the sentiments and sorrow expressed are universal. In *Elegies: A Song Cycle*, William Finn includes elegies about the loss of some of his personal friends as well as a tribute to our most recent national tragedy. Like Whitman and Tennyson, Finn manages to make overwhelming public tragedies personal and private bereavement universal.

THEATRE THREE presents the second show of the Mainstage Series of the 2005-2006 season...

Artistic Staff

Director	Jac Alder
Set Design	Jac Alder
Lighting Design	Tristan Decker
Costume Design	Michael Robinson

Cast

Beralde	*Michael A. Corolla
Beline	**Caitlin Tiffany Glass
Purgon	Stan Graner
Louisan	Abigail Jackson
Argan	*Doug Jackson
Toinette	*Amy Mills
Angelique	**Arianna Movassagh
De Bonnefois / Fleurant	**Michael Craig Rains
Thomas	**Michael Speck
Cleante	**Lee Trull
Diaforius	**Ted Wold

Production Staff

AEA Stage Manager	Terry Dobson
Production Manager	Linda Harrison
Master Carpenter	Jeffrey Schmidt
Carpenters and Painters	Liz Banks, Eric Hopper, Lane Mooney, Michael Speck
Electricians	Michael Speck
Prop Master	Linda Harrison
Production Assistant	Liz Banks

The Imaginary Invalid a comedy by Moliere

New English Language Version
By Jac Alder

Scene Synopsis

ACT I	Mid-morning, Argan's bedroom somewhere outside Paris, spring of 1673
ACT II	The same, slightly later

There will be one 15 minute intermission between acts.

The Staff of Theatre Three

Administration

Executive Producer-Director	Jac Alder
Company Manager	Terry Dobson
Director of Business Affairs	Joan Sleight
Computer Services Manager	Nick Rushing
Director of Publications & Communications	Kimberly Richard
Webmaster	Greg MacPherson
In-House Accountant	Wendy Kwan

Production

Director of Design	Harland Wright
Musical Director	Terry Dobson
Production Manager	Linda Harrison
Master Carpenter	Jeffrey Schmidt
Production Assistants	Melanie Lang, Robert Silva
Intern Staff	Liz Banks, Lane Mooney

Customer Service

Customer Service Director	Amy Mills Jackson
Hospitality and Concessions	Nancy Meeks, House Manager
Box Office Daytime Service Manager	Darius Warren
Box Office Performance Service Manager	Wendy Kwan
Box Office Agents	Sally Cole Ainsworth, Fred Faust, Amy Mills Jackson, Tony Banda, Shanara Hollins
Director of Telemarketing	Carol Crosby
Telemarketing Agents	Trinity Johannsen, Jacob Navarrete, Roger Wilson

Jac Alder (Director / Set Designer)

Jac Alder took on several duties with this show. Besides adapting it into English and Verse, he designed the set, wrote the music in the show, and staged the piece. His interest in things French dates back to high school French studies with Mlle. Snedaker and continued through his Army service in a bilingual job (between French customs authorities and the Army and Air Force postal systems) in Metz, France in 1958 and 1959. Design work comes out of his training and practice of architecture for which he holds a degree from the University of Oklahoma. His fascination with the masterpieces of Molière has produced two other adaptations: *The Physician in Spite of Himself* and *The Miser*. He has also participated as an actor, director, or designer on Theatre Three productions of Molière as translated and versified by Richard Wilbur including *Tartuffe*, *School for Wives*, *School for Husbands*, *Amphitruon*, *The Learned Ladies*, and *Misanthrope*. He wants to dedicate his work on this show to Ben Kitchens (son of Connie Coit Kitchens and the late Dr. Lloyd Kitchen, Jr.) who begins his pre-med studies at NYU this semester.

Tristan Decker (Lighting Design)

Tristan has designed for Our Endeavors Theatre Collective, Undermain Theatre, Kitchen Dog, Ewert and Co., Martice Enterprises, Cara Mia Theatre Company, Classical Acting Company and the Shakespeare Festival of Dallas. He is starting his seventh year as the resident Set and Lighting Designer/Technical Director for the University of Dallas. He has received the DFW Theater Critics Forum Award and has been nominated for both the Leon Rabin Awards and the Column Awards. Previous Theatre Three lighting design work includes *Putting It Together*, *Songs of the Redhead: The Music of Danny Kaye*, and *Metamorphoses*.

Michael Robinson (Costume Design)

Michael's first assignment for Theatre Three was the first show of the current season, *Metamorphoses*. He has designed many shows for the WaterTower Theatre, Uptown Players, CrossRoads Theatre, Plano Repertory Theatre, Garland Civic Theatre, Garland Summer Musicals, Lyric Stage, Contemporary Theatre of Dallas, Kaufman Civic Theatre, and Coppell Community Theatre. He has also designed for many of our local colleges and universities: University of North Texas Opera Theatre, Texas Christian University Opera Studio, University of Texas at Dallas, Brookhaven College, and Richland College. His awards include "Best Costume Shop" (Dallas Observer 2000), "Best Costumes" for *Old Settler* (Dallas-Fort Worth Critics Forum Award 2003), the Leon Rabin Award for Best Costumes for *42nd Street* (2003), and the Column Awards for Best Costume in a Play or Musical (2001, 2002).

Molière (Playwright)

Born Jean-Baptiste Poquelin, this son of a royal upholsterer wrote several plays that became the basis of the French national theatre, Comédie-Française including *Tartuffe*, *The Misanthrope*, *The School for Wives*, *The School for Husbands*, *The Miser*, and *The Physician In spite of Himself*, all previously produced at Theatre Three.

Michael A. Corolla (Beralde)

Michael returns to Theatre Three, having appeared as Matt of the Mint in *The Threepenny Opera*. Born in El Paso and raised in Houston, he is a graduate of Lon Morris Jr. College in Jacksonville, Texas, Centenary College in Shreveport, LA and five years of post graduate study at H.B. Studios in NYC. He returned to Texas ten years ago, after an absence of 27 years. Locally he has been seen at The Granbury Opera House in 26 productions, including Boolie in *Driving Miss Daisy* and The King in *The King and I*, at Circle Theatre as Paul Sheldon in *Misery*, at Undermain as Shamrayev in *The Seagull*, at Stage West as Angus in *Neville's Island*, at The Shakespeare Festival of Dallas at Maridan in *Anthony and Cleopatra* and The Sexton in *Much Ado About Nothing*, and at Theatre Arlington as Brian Doyle in *Laughter on the 23rd Floor*.

Caitlin Tiffany Glass (Beline)

Caitlin is making her Theatre Three debut. Previous theatre roles include Claire in *Proof* at Act One Productions in DeSoto, Cash Makenzie in a staged reading of *Everyday Heroes* at the Dallas Children's Theatre, Doris Walker in *Miracle on 34th Street* at Theatre Arlington, Lilith in *Pinky and B.B. in Paradise* at Hip Pocket Theatre, Emily in *Our Town*, Laura in *The Glass Menagerie* and Lettie in *Something's Afoot* at U.T.A. where she earned her degree. She is a voice actress for FUNimation, and is the voice of Winry Rockbell on *Fullmetal Alchemist*, a show airing on Cartoon Network. She would like to thank Natalie Gaupp for her generous encouragement, her fiancé, Drew, for believing in her, and her Lord for His faithfulness.

Stan Graner (Purgon)

Stan was seen last spring downstairs in *Merrily We Roll Along*, and is best known to T3 audiences for his portrayal of Bobby in *Company*. Additional T3 appearances include *Rise and Shine*, *Tomfoolery*, and *The Frogs*. Other credits -- Plano Rep: *Floyd Collins* (Floyd), *Violet* (Father). Lyric Stage: *The Pajama Game* (Prez), *Roadside* (Buzzey), *The Most Happy Fella* (Herman). Circle Theatre: *The Exact Center Of the Universe* (Apple), *The Countess* (John Ruskin). Classical Acting Company: *Romeo and Juliet* (Montague). Kitchen Dog Theatre: *The Juniper Tree* (Husband). Theatre Arlington: *The Secret Garden* (Archibald), *It's a Wonderful Life* (George Bailey). He's also appeared at Casa Mañana, Stage West, Garland Summer Musicals, and Granbury Opera House.

Abigail Jackson (Louisan)

Abigail's father, Doug Jackson, missed her birth because he was onstage at Theatre Three in *The Mystery of Edwin Drood*. This 7th grader at Harry Stone Montessori Academy has appeared in three productions of *Joseph and The Amazing Technicolor Dreamcoat*: The Dallas Summer Musicals, Plano Repertory Theatre, and Garland Summer Musicals. She has also played Gretel in *The Sound of Music* and a towns person in *The Music Man*. She and her sister Emily appeared with Jac Alder in Theatre Three's 40th Anniversary Show.

Doug Jackson (Argan)

Doug first auditioned for Jac Alder and Norma Young in 1971, while a student at North Mesquite High School. He was first hired at Theatre Three and given his first Equity contract for *Charlotte Sweet* in 1983. Theatre Three shows include *Rounding Third*, *I Love You, You're Perfect, Now Change!*, *A Class Act*, and *The Threepenny Opera*. He also played Seymour in Theatre Three's production of *Little Shop of Horrors*. Other theatre experience includes *South Pacific* at Casa Manana and Northshore Music Theater, *The Front Page* at Dallas Theater Center, *Henry IV, Parts I & II* at Shakespeare Festival of Dallas, and *A Christmas Carol* at Dallas Theater Center. His film appearances include the director's cut of *JFK*, *Mississippi Burning*, *Carried Away*, *Big Bad John*, and *Paramedics*. He has been twice honored as Outstanding Actor in a Musical for his work in Theatre Three's productions of *A Class Act* and *Little Shop of Horrors*. He was also a Leon Rabin Award nominee for *Rounding Third*. He will direct Theatre Three's *Children of Eden* and would like to thank Jac for his confidence in his work and for all great theater he has given to Dallas over the decades at Theatre Three.

Amy Mills (Toinette)

Amy has appeared onstage at Theatre Three for over 20 years in such shows as *Merrily We Roll Along*, *Spinning Into Butter*, *Into the Woods*, *Pumpboys and Dinettes*, *Second Threshold*, *The Threepenny Opera*, *A...My Name is Alice*, *First Lady Suite*, and the long-running hit, *I Love You, You're Perfect, Now Change!* She received a 2003 Rabin Award for her performance as Alice Beane in Lyric Stage's production of *Titanic*. She has been seen at Casa Manana, Bass Hall, Dallas Theater Center, The MUNY, Northshore Music Theater, Arkansas Repertory, the Cape Playhouse, Dallas Children's Theater, Stage West, and the Dallas Summer Musicals. In her spare time, she works on staff at Theatre Three, and hides out in Oak Cliff with her husband, actor Doug Jackson, and their two daughters, Emily and Abigail.

Arianna Movassagh (Angelique)

Arianna has appeared in several Theatre Three productions including Sally in *You're A Good Man, Charlie Brown*, Woman #1 in *I Love You, You're Perfect, Now Change!*, Susan in *Company* and Polly Potter in *The Coconuts*. A few of her other theatre credits include Adele in *A Man of No Importance* at Uptown Players, Rosa Bud in *The Mystery of Edwin Drood*, Diana Morales in *A Chorus Line* at Plano Repertory Theatre, Prudie Cupp in *Pump Boys & Dinettes* at Contemporary Theatre of Dallas, and Myrtle in *Jack & The Beanstalk* at Dallas Theater Center TCT. On television, she has appeared on *Walker, Texas Ranger*. She played Paula in the feature film, *The Real Queen of Hearts Ain't Even Pretty*. She also played Little Miss Muffet in the video, *Barney: Sing That Song*. In 2002, she won a Leon Rabin Award for Best Actress in a Musical for performance of the Baker's Wife in ICT Mainstage's production of *Into the Woods*.

Michael Craig Rains (De Bonnefois / Fleurant)

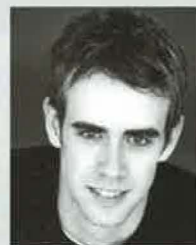
Michael has been in plays in various theatres across the Metroplex, including this theatre last season, as the policeman Jiggs Kennedy in *Seven Keys to Baldpate*. Furthermore, he played four characters in *To Kill A Mockingbird* (including Boo Radley), at Dallas Children's Theatre. Michael has bragged about space aliens landing in his backyard, dancing at La Bare, and being a puppet trapped in a man's body; but says Theatre Three is his most exciting experience.

**Michael Speck** (Thomas)

Michael just completed his BFA in Theatre at Stephen F. Austin and a year-long Class A internship at Theatre Three. Last season, he played the defense lawyer in *The Man Who Shot Santa Claus*, the curtain-raiser played before *A Christmas Memory*. At Stephen F. Austin, he played Banjo in *The Man Who Came to Dinner*, Dr. Huml in *Increased Difficulty of Concentration*, and Papillon in *Rhinoceros*.

**Lee Trull** (Cleante)

Lee is making his debut performance at Theatre Three in *The Imaginary Invalid*. Previous theatre experience roles include Adam in *The Shape of Things* at Stage West, Titus in *Freedomland* at Echo Theatre, Stevens in *A Flea in Her Ear* at Classical Acting Company, Geoffrey in *The Lion in Winter* at Stage West, Tranio in *Taming of the Shrew* at The Shakespeare Festival of Dallas, and Quinn in *Hazard County* at Kitchen Dog Theatre. Lee is also an accomplished writer, having written a 14 part documentary series, "Route 66: The Marathon Tour". His adaptations of O'Henry's *Gift of the Magi* and Mark Twain's *Huck Finn* are being produced by Classical Acting Company. Stage West is producing his play, *Puppet Boy*, this season as well. He sends all his love to Melissa.

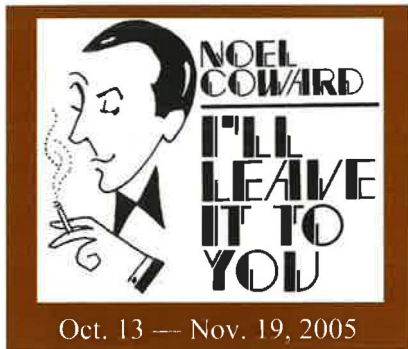
**Ted Wold** (Diaforius)

This award-winning actor earned a B.A. from the University of Texas at Austin, studied at J.D. Duke University School of Law, and studied the Meisner Technique with Terry Martin. He appeared in Theatre Three's productions of *The Tale of the Allergist's Wife* and *Sly Fox*. He has appeared in many shows at several area theaters including *Inspecting Carol* and *The Underpants* at Plano Repertory Theater; *Noises Off*, *The Spitfire Grill*, and *You Can't Take It With You* at WaterTower Theatre; *Young King Arthur* at Dallas Children's Theatre; *Last Night of Ballyhoo* and *The Life and Times of Tulsa Lovechild* at Contemporary Theatre of Dallas; *Sordid Lives* and *The Last Session* at Uptown Players; *Driving Miss Daisy*, *Art*, *Dinner With Friends*, and *As Bees in Honey Drown* at Theatre Arlington.



HAVE YOU RESERVED YOUR TICKET YET?

Don't miss the fabulous third show of Theatre Three's 2005-2006 season: From B.C. to A.D-- Tales of the Great Storytellers:



Call Theatre Three's Box Office at 214-871-3300, option #1 for tickets and information.

The 2005-2006 Appetizer Attraction Series Sponsor



2719 McKinney AV
Dallas, Texas 75204
214-220-0022
www.tuttodallas.com



Dear Playgoer,

Amarillo, where my friend Allen Shankles heads the longest-in-operation community theatre in Texas, sets a great example I'd like to see Dallas follow. When you go to see any of the hundreds of performances at the Amarillo Little Theatre, your playbill is a compendium of every business in that town! The ads in that playbill run the publication to more than 100 pages! That's great support for Allen and his good work, but even better than that, a wonderful way for businesses to put themselves in front of a vital community. You really know what's available to make your life good in Amarillo when you carry a playbill away with you.

There's a similar story in Fort Worth where businesses are becoming alert to their advantage of showing themselves in playbills of Circle Theatre, Stage West, and events at Bass Hall.

With the help of Greg Ricks, Theatre Three's trying to develop its playbill to a larger, more colorful and ad-enriched publication. We think there might be Dallas businesses who'd like to tell our 50,000 annual playgoers what goods and services they have for making life in Dallas special.

Could this be your business? Call Greg Ricks at 817-429-4949 for more information.

Sincerely,

JAC ALDER

JAC ALDER, Executive Producer-Director

The 2005-2006 Season Sponsors



Theatre Three is supported by its Board of Directors, by subscribers, by funds from the City of Dallas Office of Cultural Affairs, and The Texas Commission on the Arts. Supporters also include TACA. Major corporate season sponsors include American Airlines, *The Dallas Morning News*, and WFAA Channel 8. For more information about Theatre Three's corporate sponsorship program, please contact Jac Alder at 214-871-3300, #2.

IN MEMORIAM

Contributions have been made in memory of, or from the estates of...

Sam & Shirley Jones Catter, Bill Dallas, William T. Dobson, Scott Everheart, Javad Fiuzat M.D., Paula Goodlet, Oliver Hailey, Lloyd W. Kitchens Jr., M.D., Anne Weeks Jackson, Jim Jackson, Lynn Mathis, Masha Porte, Carolyn Ryburn, Frank Rey, Mary Blanche Scales, Charlotte E. Schumacher, Lynn Townsley, May Tweed, Audrey B. Waite, Evelyn Wilke, Martha Roselyn Wright, and Norma Young.

Beginning with the 1996-1997 season, all memorial gifts, unless otherwise designated, are placed in the theatre's new permanent building endowment fund.

Interested in Becoming a Volunteer?

Tell us about yourself!

NAME: _____

ADDRESS: _____

HOME PHONE: _____

WORK PHONE: _____

EMAIL: _____

Tells us about your interests!

USHERING (includes free a free ticket to that evening's performance)

ADMINISTRATIVE SUPPORT (archivist, receptionist, mailings, etc.)

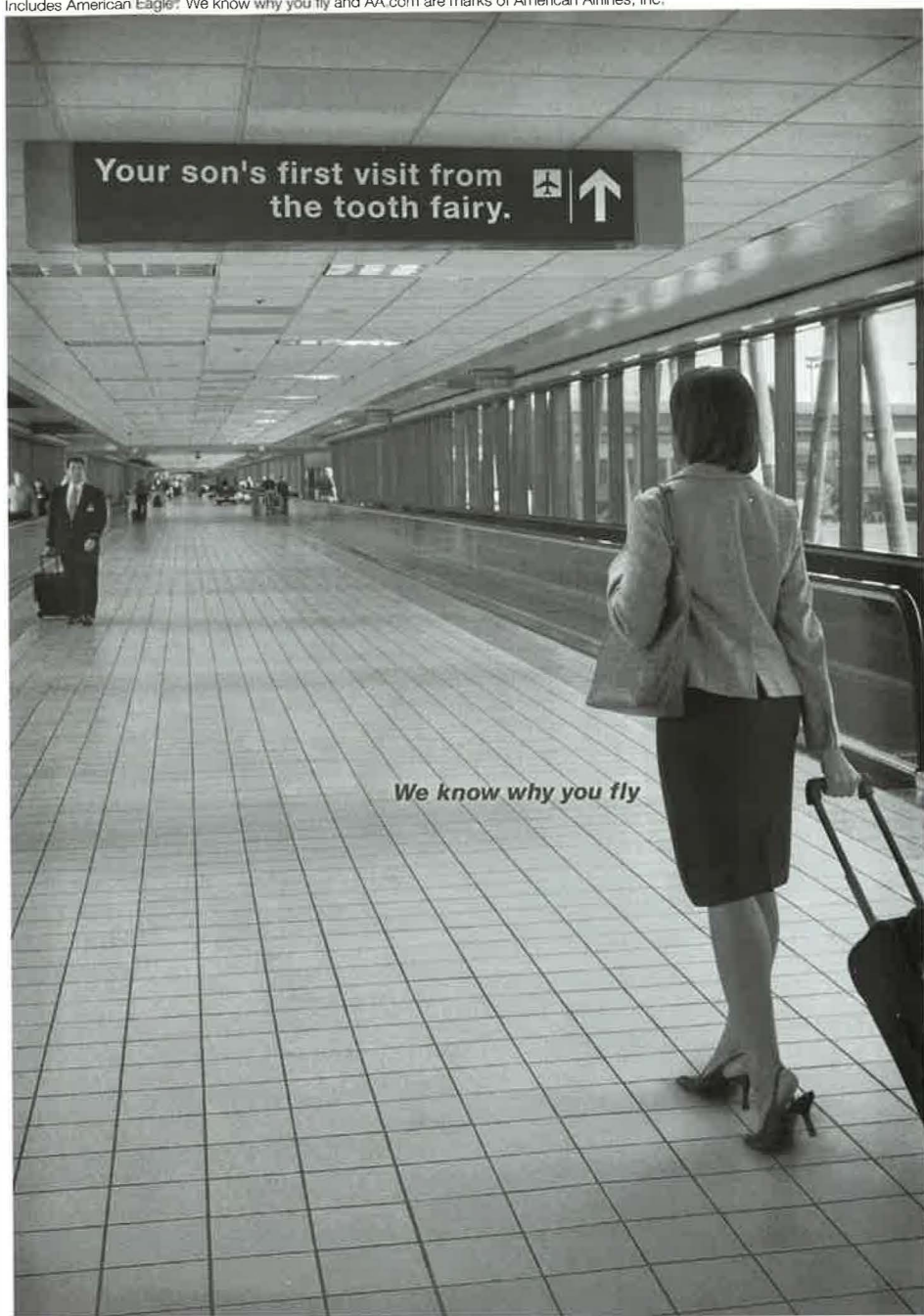
PRODUCTION SUPPORT (load in, strike, costumes, etc.)

EVENT SUPPORT (hosting, food prep, arts fair, etc.)

OTHER _____

For more information, contact Amy Mills Jackson at 214-871-3300 x 202.
Please detach and submit to the Theatre Three Box Office.

Includes American Eagle®. We know why you fly and AA.com are marks of American Airlines, Inc.



We know why you fly

200,000 people. On 3,800 flights. Every day.
Including one to the most important meeting of your day.

AmericanAirlines®
AA.com



The Dallas Morning News and

WFAA-TV, Channel 8 are proud

to serve our community by

informing, educating and

entertaining our readers and viewers.

We Applaud You

and we are inspired by

organizations like yours, who

continually entertain us.

Congratulations for a job well done.



THE SPIRIT OF TEXAS

The Dallas Morning News

DallasNews.com

THEATRE THREE

THE theatre-in-the-round at the Quadrangle

ANNOUNCING THEATRE THREE'S 2005-2006 MAINSTAGE SEASON:



By Mary Zimmerman July 7 - August 13, 2005

Mary Zimmerman, the recipient of the MacArthur "Genius Award," based *Metamorphoses* on the timeless tale of Ovid. This moving masterpiece puts together some of mythology's most famous characters including Orpheus and Eurydice, King Midas, and Phaeton and Apollo, creating a cathartic, transcendent, and intriguing theatrical event.



By Moliere August 25 - October 1, 2005

In this new English language version by Jac Alder, Argan, a resolute hypochondriac, spends most of his time consulting with doctors about his mysterious illness and devising ways not to pay his bills. When he agrees to marry his daughter to a blind medical student, his daughter and her maid concoct a clever plan that manipulates Argan's own medical obsession.



By Noël Coward October 13 - November 19, 2005

Mrs. Demott has her hands full with five very lazy children. When a wealthy uncle suddenly announces that he is dying and will leave his fortune to the most productive and successful of the children, all five of the young adults suddenly get wildly energetic.



By Stephen Schwartz & John Caird December 1, 2005 - January 14, 2006

Inspired by Genesis, *Children of Eden* explores the complicated relationship between parents and their children. After God creates Earth, plants, and animals, he decides to create something extraordinary: man. With an energetic and rich score, this ambitious musical shows a personal side of some of history's most legendary parents.



By George Bernard Shaw January 26 - March 4, 2006

In a small New Hampshire town, devout Puritans complacently await the conclusion of the Revolutionary War, unaware of the danger that surrounds them. When an unlikely hero, Richard Dudgeon returns home, British soldiers mistake him for the minister of the town and threaten to hang him. Dudgeon contrives an astonishing plot to fool the British general, Burgoyne. Romance, comedy, politics... a play with everything.



By Agatha Christie March 16 - April 22, 2006

Agatha Christie's most beloved mystery comes to Theatre Three's stage. A young couple eagerly opens their bed and breakfast, only to welcome a peculiar array of strange guests. Suddenly, a ferocious blizzard traps everyone in the house and there are reports that a murderer is hiding in their midst!

Show # 7 TBA

Single Tickets 214-871-3300 • Group Rates 214-760-9844 • www.theatre3dallas.com
Friendly Box Office Inside To Take Your Orders Now

AND IN THEATRE TOO!

The Appetizer Attraction Series:
Elegies: A Song Cycle:
Sept. 4-14, 2005
My Own Private Diva:
March 26-April 5, 2006

The Spotlight Series:
Songs of the Redhead:
The Music of Danny Kaye:
July 14-24, 2005
Noel Coward: A Talent to Amuse
Oct. 27-Nov. 6, 2005

The Bring Backs:
A Christmas Memory:
Dec. 13-23, 2005
I Love You, You're Perfect,
Now Change!
Feb. 2-March 5, 2006