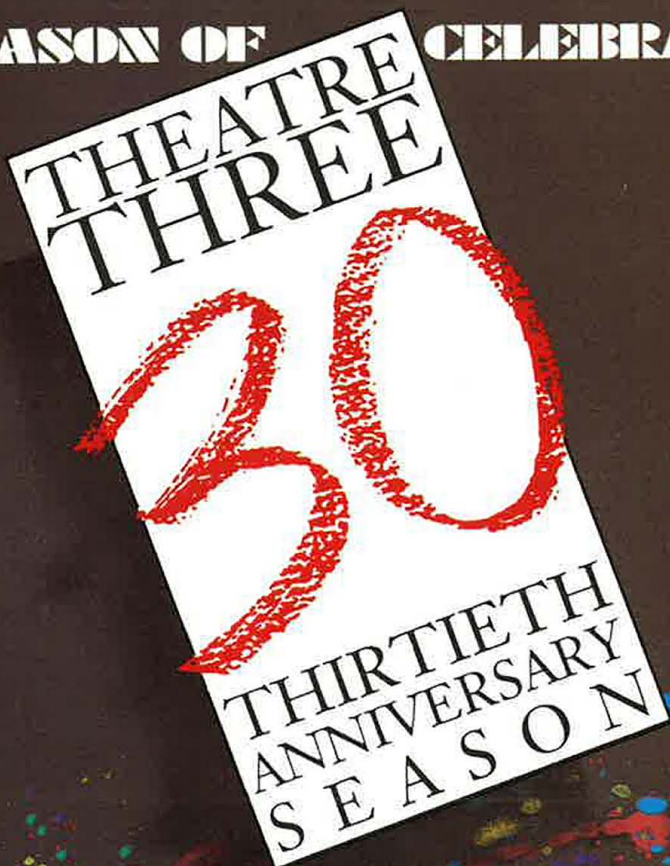


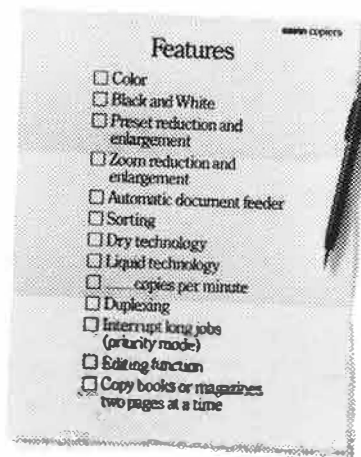
A SEASON OF CELEBRATION!



Carole Cook IN **DRESS UP**

The Dallas Morning News

1991-92 SEASON SPONSOR



## The most adjustable feature of Savin copiers.

At Savin, we believe the best time to make adjustments to your copier is before you buy one. And that means selecting a copier that has as many options as you need. Or as few.

Which is exactly what you'll get from Savin.

We offer everything from simple desktop copiers to ones that reduce and enlarge. Copy on both sides. Collate. Even copy in full color.

And only Savin offers you the option of liquid technology. Proven to make your copier last longer.

Then there are our standard features. Like one of the best guarantees in the industry. A local dealer and service network. And, of course, the value and dependability that's synonymous with the Savin name.

So stop in and show us your checklist. Chances are, it'll be a perfect match to one of our copiers.

**SAVIN**  
Follow the leaders.

DALLAS BRANCH  
SAVIN CORPORATION  
2389 MIDWAY ROAD  
CARROLLTON, TEXAS 75006  
214-931-1700

## HOW TO OPEN TO RAVE REVIEWS.

First, do something to get people's attention. Like offer high quality products. Then, do something worthy of their praise. Like offer high quality service.

With combined assets of almost 5 billion dollars, we're settling in for a long successful run as the largest Texan-run bank in Texas. And if you missed our opening day, relax, we're giving encore performances daily.

**TEAMBANK**  
MEMBER FDIC

# TONIGHT WAS MADE POSSIBLE BY YEARS OF SOLO PERFORMANCES.

Long, lonely hours.  
Broken strings. Sour notes.  
It takes a lot of hard work to play.  
Yet, when the curtain goes up,  
all we're aware of is beautiful music.  
At ARCO, we know how  
much energy it takes to excel.  
We applaud all those  
who make performing an art.  
And everyone who works to  
reach the high notes.



**ARCO Oil and Gas Company**



## 30 Years Young!

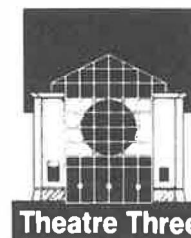
When Norma Young returned to Dallas in 1960 she remembers that she "had no assets, just ambition." She had a vision of a professional theatre employing professional actors in classical, contemporary and musical theatre. In its first season, senior critic for *The Dallas Morning News* John Rosenfield praised the troupe's accomplishments, saying its work showed "the best acting Dallas has seen in years and years and still more years." Seven shows were produced in the downtown Sheraton before the "stubborn, torch-bearing group" moved to an unused seat cover garage at 2211 Main Street. Theatre Three was to perform for a growing and loyal audience in that simple 125 seat arena theatre for the next eight years. "Not since Margo Jones," wrote Bob Porter, then with the *Denton Record-Chronicle*, "have we seen such consistently rewarding and promising fare in North Texas."

Theatre Three is so named, by Ms. Young, for the three components of theatre: the artist, the playwright, and the audience. "For better or worse," wrote *Dallas Times Herald* critic Dan Hulbert in 1986, "it is the theatre that never set itself above the concerns of its audience. With one of the country's few remaining in-the-round formats — made famous by Margo Jones in her Fair Park theatre of the late '40s — Theatre Three has never asked to be regarded as a temple of art, but rather as a community hall in the best sense, a place where ideas are shared with candor and warmth."

By 1969, Theatre Three's image had changed from the "beatniks on Main Street" as its artists used to be called, to a mainstream theatre with a well-rounded repertoire. Its fledgling Board of Directors sponsored gala events that underwrote the move to a new 241 seat home in The Quadrangle.

Among the young artists who worked on its stage in the '60s and '70s were Ronnie Claire Edwards, Morgan Fairchild, Beth Henley and James Duff. Productions such as *Purlie Victorious* and *In White America* began a tradition of serving Black audiences when they were all but ignored by other Dallas arts groups. Theatre Three has been Dallas' most committed supporter of emerging writers and was the first theatre to return Eugene O'Neill to Dallas stages after a twenty-five year lapse, and the first to do Edward Albee, Harold Pinter and August Wilson plays in Dallas. In 1973, Theatre Three became the first Dallas theatre to negotiate a contract with Actors' Equity Association for year-round performances. Today, it presents more than 375 performances annually and has a subscription audience of 6,000 loyal patrons. In 1986, Theatre Three negotiated the purchase of its Quadrangle home in celebration of its twenty-fifth anniversary. Today, it remains the only theatre in Dallas to own its own building.

Norma Young and Jac Alder have steadfastly followed the theatre's mission to produce theatrical works, be they dramatic, comedic, classic, or musical, that explore the universal aspects of the human experience, create a metaphor the audience can poetically embrace and foster the elements of social justice: understanding, compassion and communication.



**PLAYING TEXAS  
FOR 30 YEARS**

**Subscribe  
Now!  
Call 871-3300**

Lighting products for  
Theatre Three are supplied by

**GTB  
SYLVANIA**

•  
**WHERE THE BEST  
COMES TO LIGHT.®**



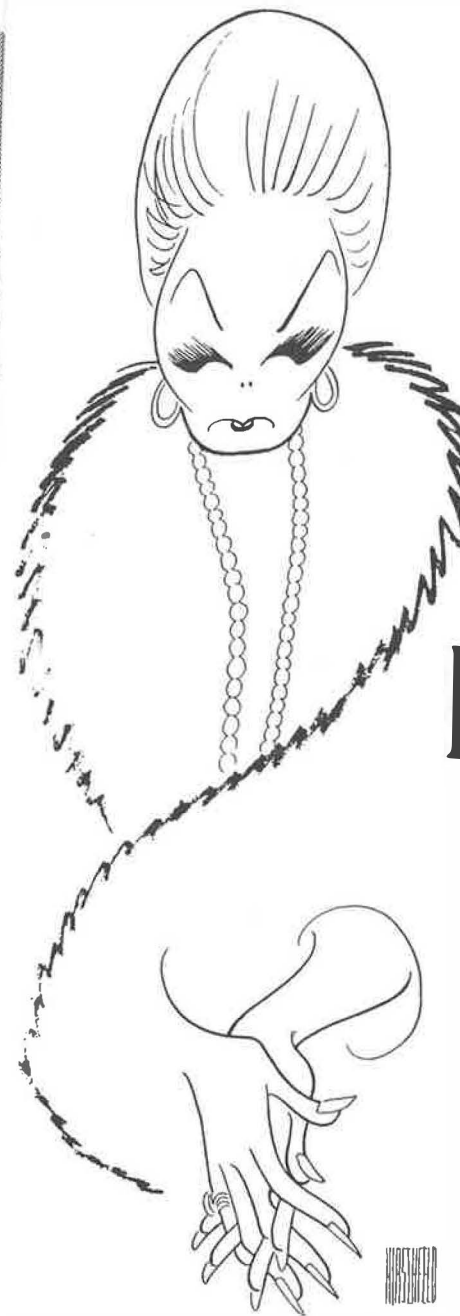
**IN THE QUADRANGLE  
2800 ROUTH STREET  
DALLAS, TEXAS**

**NORMA YOUNG  
FOUNDING/ARTISTIC DIRECTOR  
JAC ALDER  
EXECUTIVE PRODUCER-DIRECTOR**

•  
**BOX OFFICE  
214-871-3300  
ADMINISTRATION  
214-871-2933  
DIRECT SALES CENTER  
214-871-2350  
FAX  
214-871-3139**

•  
**The Dallas Morning News**

1991-92 SEASON SPONSOR



**THEATRE THREE**

**NORMA YOUNG**  
*Founding/Artistic Director*

**JAC ALDER**  
*Executive Producer-Director*

presents

# **Carole Cook IN DRESS UP**

*Directed by*  
**TOM TROUPE**  
*Musical Accompaniment*  
**TERRY DOBSON**

*Scenic Design*  
**CHERYL DENSON**  
*Lighting Design*  
**LINDA BLASE**  
*Sound Design & Technical Director*  
**TRISTAN WILSON**  
*Production Stage Manager*  
**TERRY TITTLE HOLMAN**

•  
There will be one intermission  
of fifteen minutes.  
•

THEATRE THREE operates under an agreement with Actors' Equity Association (AEA), the Union of Professional Actors and Stage Managers in the United States. \*Member, AEA. \*\*Membership Candidate, AEA.



## Carole Cook

created the role of Maggie Jones in the New York, Los Angeles and Tokyo companies of Michael Stewart and Mark Bramble's Tony Award winning musical, *42nd Street*, and originated the role of Blanche Dailey in Bernard Slade's Broadway hit, *Romantic Comedy*. She was the first actress to follow Carol Channing as Dolly Levi in *Hello, Dolly!* and for 18 months starred in the Australia-New Zealand productions of that show. She starred in the Los Angeles and National companies of Oliver Hailey's *Father's Day*, for which she won a Drama Critics Cir-

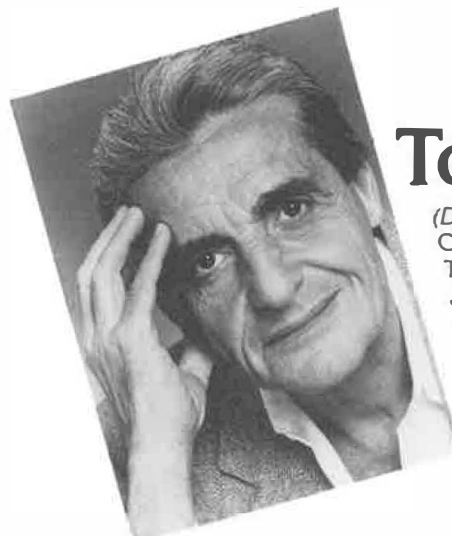
cle nomination and a Robby Award as Best Actress. She later went on to star in the Australian production of that play. She appeared in George Furth's *The Supporting Cast* which won for her a Best Actress Drama-Logue Award and won that Award once again for her performance in Jack Heifner's *Patio/Porch*.

Some of her other stage roles include Amanda in *Private Lives*, Regina in *The Little Foxes* and the title roles in *Madwoman of Chaillot* and *Auntie Mame*. She has also toured extensively in her one-woman show, *Dress Up*. Other musical comedy performances include: *Annie Get Your Gun*, *Call Me Madam*, *Pal Joey*, *Kismet*, *Stop The World, I Want To Get Off* and she was *Mame* for Burt Reynolds at his theatre in Florida. Miss Cook was brought to Hollywood by Lucille Ball and put under contract to Desilu Studio. She starred there in Miss Ball's *Desilu Revue*. Her feature films include *The Incredible Mr. Limpet*, *Palm Springs Weekend*, *The Gauntlet*, *American Gigolo*, *Grandview U.S.A.*, *Summer Lovers* and *Sixteen Candles*.

Television audiences have seen her in the recurring roles of Donna LaMar in *Cagney And Lacey* and as Cora in *Dynasty*. She was a regular on the *Merv Griffin Show* and has frequently guest starred on shows such as *Magnum P.I.*, *Hart To Hart*, *The Love Boat*, *Knight Rider* and *Murder, She Wrote*. Miss Cook has just completed the National tour of Robert Harling's *Steel Magnolias* for which she received a 1990 Helen Hayes Theatre Award nomination as Outstanding Performer.

Carole has been married for 26 years to actor-director Tom Troupe, who besides playing her on stage ex-husband in *Father's Day*, has also directed her in the American and Australian productions of that play as well as in *The Supporting Cast*, *Dress Up* and *Patio/Porch*. They co-starred in the Dallas Theater Center's production of *The Lion In Winter* and make their home in Los Angeles. Carole appeared at Theatre Three with Ronnie Claire Edwards in the 1986 production of *Patio/Porch* directed by Tom Troupe.\*

NO LATE SEATING!!!  
NO CAMERAS, RECORDERS, OR BEEPERS!  
NO SMOKING IN LOBBY OR STAGEHOUSE BY ORDINANCE OF THE CITY OF DALLAS!  
Smoking Lounge and Restrooms Downstairs  
Accessible Restroom located next to Box Office  
Special Equipment for the Hearing Impaired available from the House Manager.



## Tom Troupe

(Director for *Dress Up*) directed his wife Carole Cook and Ronnie Claire Edwards in Theatre Three's 1986 production of *Patio/Porch* by Jack Heifner. He has directed *Born Yesterday*, *Steel Magnolias* and Bernard Slade's *Same Time Next Year* for the Broadway Celebrity Play Series. He also co-starred with Barbara Rush in the U.S.-Canadian tour of *Same Time Next Year*. On Broadway, he appeared opposite Mia Farrow in Mr. Slade's *Romantic Comedy*. He directed the Canadian world premiere of Mr. Slade's thriller *Fatal Attraction* and acted in

and directed the author's latest comedy, *Return Engagements*, in its East Coast premiere. *Sofi*, the film version of Mr. Troupe's one-man stage adaptation of Gogol's *Diary Of A Madman*, won him the Best Actor Award at the Atlanta Film Festival.

He also starred in the Canadian world premiere of Richard Baer's *Embraceable You*. He directed the American and Australian productions of Oliver Hailey's *Father's Day* which starred Carole Cook. He also directed Miss Cook in George Furth's *The Supporting Cast* at the Huntington Hartford Theatre in Los Angeles. He created the role of Dan Berrigan in *The Trial Of The Catonsville Nine* at the Los Angeles Mark Taper Forum. After making his Broadway debut in *The Diary Of Anne Frank*, he went to Hollywood to appear in a succession of feature films which include *The Big Fisherman*, *The Devil's Brigade*, *Making It*, *Che*, *Kelly's Heroes* and Carl Reiner's *Summer School*.

Mr. Troupe has guest starred on many major television programs and most recently on *Cheers*. He directed and acted in several plays at Burt Reynolds' Theatre in Jupiter, Florida, and is on the guest faculty of Mr. Reynolds' Theatre Institute.\*

RETURN TO AN ERA OF ELEGANCE



EXPERIENCE THE TRADITION  
SUNDAY BRUNCH

SERVING A WIDE ARRAY OF DELECTABLE ITEMS  
11:00 AM - 2:00 PM

\*\*BUY 3 BRUNCHES AND 4TH IS FREE WITH AD\*\*

OMNI  MELROSE HOTEL

3015 OAK LAWN AVENUE • 521-5151 FOR RESERVATIONS

NOT VALID HOLIDAYS - EXPIRES FEB. 24, 1991



photo: Susan Kandell

## Norma Young

(~~Founding~~ Artistic Director) was born in Dallas, reared in Oak Cliff and educated at Sul Ross State University in Alpine (which presented her with its Distinguished Ex-Student Award in 1982). Ms. Young's career took her to Houston's Alley Theatre and New York before she returned to Dallas in 1961, walked into Dallas' two daily newspapers to announce that she was planning to use a \$2,000 inheritance to "create her own work," and founded Theatre Three.

In her capacity as Artistic Director, Ms. Young has presented the works of Shakespeare, Moliere, Goldoni, Ibsen, and Chekov, among other classical writers. She has presented Dallas premieres of the most significant European writers, including Beckett, Brecht, Molnar, DeGhelderode, Genet, Anouilh and Pinter. And she has included American playwrights O'Neill, Kopit, Foote, Williams, Albee, Inge, Thornton Wilder and Elmer Rice in the list of authors she has championed in Dallas.

In addition to her extensive directing credits, Ms. Young has played many leading roles for Theatre Three, most recently appearing as Rosanna Ainsworth Jackson in the world premiere of James Duff's *A Quarrel Of Sparrows* and before that as Mme. St. Pe in Jean Anouilh's *The Waltz Of The Toreadors*. Her guest appearances have taken her to San Antonio's Guadalupe Cultural Center in *La Casa De Bernarda Alba* and Houston's Alley Theatre in her one-woman show, *The Life She Led*, about Susanna Dickinson (the sole survivor of the Alamo) and Elizabet Ney (the nineteenth century sculptress).

Ms. Young has been called "Dallas' First Lady of the Theatre" by the Dallas Times Herald and named one of the five "grande dames" of Texas by Ultra Magazine. In December 1988, with Jac Alder, she received the Dallas Historical Society Award for Excellence in Creative Arts.

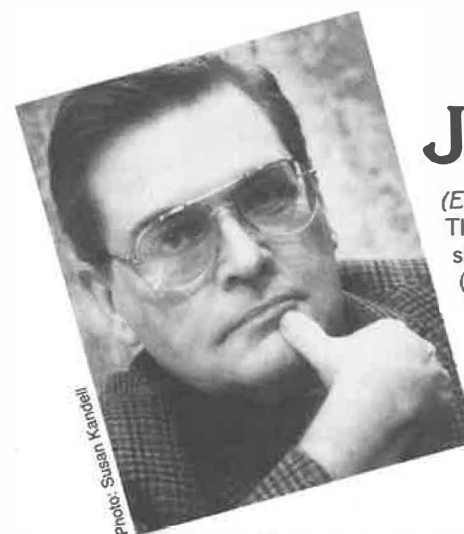


photo: Susan Kandell

## Jac Alder

(Executive Producer-Director) has served Theatre Three as an administrator, actor, designer, musician, director and writer since he (with Norma Young, Robert Dracup and Ester Ragland) co-founded the theatre thirty years ago. Born in Oklahoma City, Alder earned a degree in architecture from Oklahoma University. In 1960, he moved to Dallas where he worked with Fisher and Jarvis Architects and as a designer-program writer for George Dahl. While waiting for a friend to finish reading for a role in a community theatre audition, he was

approached by Norma Young "on all fours so as not to disturb the action" and asked, "would you like to act in one of my plays?" Thus began a working courtship, which became a working marriage and the longest, strongest professional partnership in Dallas theatre.

His directing credits include the world premieres of *Safety* and *A Quarrel Of Sparrows* and such classics as *Othello*, *School For Wives*, *Arms And The Man* and his own adaptation of *The Venetian Twins*. Alder's musical credits include *A Little Night Music*, *Anything Goes*, *Side By Side By Sondheim*, *The Fantasticks* and the recent *Weill Women*, which he devised and directed.

During the '70s, Alder was Director of Drama at the University of Texas at Arlington. He currently serves as advisor to DISD's Arts Magnet High School and as a member of DISD's PACE organization (Partnership of Arts, Culture, and Education). Alder has served as chairman of the Texas Commission on the Arts Theatre Panel. He is a founding member of the Dallas Arts Combine and the Dallas Arts Coalition. He has served as a grants evaluator for the Western Arts Foundation of Santa Fe and as a panelist for the Cultural Arts Council of Houston and the Arkansas Arts Council and is a member of the Board of Texas Non-Profit Theatres.

In 1988 he received the Dallas Theatre Critics Forum Award for outstanding service to Dallas theatre. Also in 1988, with Norma Young, he received the Dallas Historical Society Award for Excellence in Creative Arts. He has most recently been nominated for the National Endowment for the Arts' Distinguished Theatre Artist Fellowship.

## IF YOU'RE NOT WEARING IT, SELL IT

You can't enjoy your jewelry if it's in your safe deposit box. Sell it for immediate cash. We purchase fine gems, diamonds and art objects. No consignment, conditions or delays. Please come in or telephone 214-358-0838 for a confidential consultation.

**WALNUT COIN & JEWELRY**  
*Exchange*

3720 Walnut Hill at Marsh

Daily 10 am to 6 p.m.  
Sat. 'till 3 p.m.

## A salute to those who face the empty page, the empty canvas, the empty stage.

American Express Company.\* In support of the arts.

\*American Express Travel Related Services Company. Shearson Lehman Brothers.  
IDS Financial Services and American Express Bank Ltd.

© 1986 American Express Travel Related Services Company, Inc.





## TERRY DOBSON

(Musical Director) has been Theatre Three's Musical Director since 1980, providing direction and accompaniment for over 31 musicals, including last season's finale, *Weill Women*, and the previous season's finale, *A Funny Thing Happened On The Way To The Forum*. Terry recently finished an assignment with the Philadelphia Theatre Company as Musical Director for their production of *The Middle Of Nowhere*, the Randy Newman/Tracy Friedman musical revue that he previously worked on at Theatre Three. Terry journeyed to the U.S.S.R. as Musical Director for *Peace Child* and has made several appearances on stage at Theatre Three, most recently as Mortimer in *The Fantasticks*. Dallas audiences have recently enjoyed his work as Musical Director for *Delta's Diner* at the Plaza Theatre and *A Christmas Carol* at Dallas Theater Center.\*

## CHERYL DENSON

(Associate Producer & Set Design) directed last season's productions of Richard Greenberg's *Eastern Standard* and Rupert Holmes' comedy thriller *Accomplice*. She made her Theatre Three directing debut with the 1988 holiday hit production of *The Fantasticks* and directed the Jones/Schmidt classic for the second time in 1989. Dallas audiences have seen her directing work in *Broadway Bound*, a hit at Dallas Repertory Theatre, *Pulp And Circumstance* at the Crescent Theatre, Dallas Repertory Theatre's *Sherlock's Last Case*, and Horton Foote's *The Traveling Lady* at Theatre Three. Cheryl has designed sets and/or costumes for numerous Theatre Three productions, including the acclaimed setting for *The Road To Mecca* (with Harland Wright), the garden setting for *Woman In Mind* and the speakeasy-backstage for *Broadway*. Her acting appearances include such Theatre Three hits as *Safety* and *Top Girls*. A graduate of Baylor University and Trinity University and a native of Corsicana, Cheryl joined Theatre Three's staff in the autumn of 1983.



## LAURENCE O'DWYER

(Associate Director) recently charmed Theatre Three's audiences in *Joe Turner's Come And Gone*, *London Assurance*, and *A Funny Thing Happened On The Way To The Forum*. For the 1989 Season, he received the Dallas Theatre Critics Forum Award for Theatre Three's *Nothing Sacred* and Dallas Theater Center's *Temptation*. His many Theatre Three appearances include *Woman In Mind*, *A Quarrel Of Sparrows*, and *The Waltz Of The Toreadors*. Larry has directed such Theatre Three hits as *Ma Rainey's Black Bottom*, *Little Shop Of Horrors*, *Animal Farm*, *The Show-Off*, *A Low Musical*, and *Light Up The Sky*. Larry created Theatre Three's Grimm Magician Players and has written and directed most of their productions as well as *Tumbleweed Theatricals*. At South Coast Repertory Theatre he performed in Beth Henley's *The Debutante Ball*. A



graduate of Goodman Memorial Theatre in Chicago, Larry has served as Chairman of the Drama Department at Bennington College.\*

## Artistic Staff

### TERRY TITTLE HOLMAN

(Production Stage Manager) has been with Theatre Three since the 1987 Season. She has been a professional stage manager for over fifteen years and a Mommy for almost one year. Terry is very pleased to be sharing in Theatre Three's 30th Anniversary Season. Terry would like to thank her husband, Robert, and son, Tanner, for all their patience and love.\*

### LINDA BLASE

(Lighting Design) has designed Theatre Three's recent productions of *Weill Women*, *Joe Turner's Come And Gone*, *Accomplice*, *London Assurance*, *Eastern Standard*, *Joanna's Husband And David's Wife*, *A Funny Thing Happened On The Way To The Forum*, *The Traveling Lady*, *The Road To Mecca*, *The Fantasticks*, *Nothing Sacred*, and *Woman In Mind*, as well as more than 25 productions at Dallas Theater Center. Her other area credits include lighting for Dallas Repertory Theatre's *Broadway Bound* and *A Shayna Maidel*, Callier Theatre's *The Haunting Of Hill House*, and lighting and sound for *To Kill A Mockingbird* at Dallas Children's Theatre. Linda teaches an advanced lighting class at Dallas Arts Magnet High School. Truly one of Dallas' busiest designers, Linda designed 17 shows in the 12 months of 1990. She is pleased to once again be associated with Carole Cook and Tom Troupe, having worked with them on *Diary Of A Madman*.

### TRISTAN WILSON

(Technical Director & Sound Design) is beginning his sixth season at Theatre Three, where he designed and installed the theatre's sound system. In more than ten years in theatre, Tristan has worked in theatres across the Midwest, including Missouri Repertory Theatre in Kansas City and Creede Repertory Theatre in Colorado. He served as Production Manager for Moving Target's long-running hit *Six Women With Brain Death*, which featured his wife, actress Peggy Pharr Wilson.

### DIANA FIGUEROA STORY

(Costumer) joined Theatre Three's staff last season and has worked in many different capacities in several theatres in the area. For three years her creative talents went into children's theatre. She was resident costume designer for the Creative Arts Theatre and School and guest designed the children's productions at Theatre Arlington. One of her favorite projects was to design costumes for *Roosters*, the joint effort of Teatro Dallas and Addison Center Theater. Diana has a wonderful husband, Dale, and three beautiful children.

**ACKNOWLEDGEMENTS:** The Quadrangle; City Warehouse Corporation; Manhattan Cleaners; Susan Kandell; Dallas Arts Combine; Lee Data Mail; Quadrangle Grille; Perrier; Ford Motor Company; plus many other wonderful individuals, businesses, and organizations. THANKS!

# Banking From Your Point Of View.

**NCNB**  
**Texas**

Banking From Your Point Of View

© 1989 NCNB Texas Member FDIC Equal Housing Lender

## Thanks!

---

Theatre Three is supported in part by a complex network of agencies, foundations, corporations, and individual patrons. Theatre Three strives to reflect the diversity and generosity of these sources through creative selection of quality programming and effective outreach activities.

By instituting a Performing Partnership with Theatre Three your company can become involved in one of the most dynamic cultural institutions in Dallas. Performing Partnerships are a way to help out while providing real return on your investment. Levels of involvement are listed below. Contact our development office for more details (871-2933).

Senior Partnership (\$10,000 and above)  
Associate Partnership (\$5,000 - \$9,999)  
Supporting Partnership (\$2,000 - \$4,999)  
Corporate Partnership (\$1,000 - \$1,999)  
Performing Partnership (\$500 - \$999)

---

### SENIOR PARTNERSHIP

ARCO  
Northern Telecom, Inc.

### ASSOCIATE PARTNERSHIP

American Express

### SUPPORTING PARTNERSHIP

Bear Stearns, Co., Inc.  
NCNB  
Neiman Marcus  
Northern Telecom  
J. C. Penney  
TU Electric - Texas Power & Light Division

### CORPORATE PARTNERSHIP

Associates Corporation of North America  
AT&T  
Centex Corporation  
Dean Witter Reynolds, Inc.  
Kim Dawson Agency, Inc.  
Elliot's Hardware  
Frito-Lay  
Mr. Kenneth Hughes  
Hunt Oil Company  
Thompson and Knight  
Texas Instruments  
United Technologies/Otis

### PERFORMING PARTNERSHIP

Southland Corporation  
Texas Instruments  
Johnson and Higgins of Texas, Inc.  
Ben E. Keith Company  
Murray A. Goldenberg Textiles, Inc.  
Clotheshorse Anonymous  
Realty Appraisal Co., Inc.  
Rethreads  
Half Price Books/Ken Gjemre  
Basil Martinizing of Carrollton  
Wagner Accounting/Consultants, Inc.

## Thanks!

---

Corporate funding plays an important part here at Theatre Three. Generous corporate contributors provide essential funding for overall operations and special projects. Their contributions indicate a level of involvement uncommon in the business world. Corporate giving enhances the quality of life not only for members of contributing organizations, but for the entire community as well.

### IN KIND DONATIONS

Bradmark Business Systems  
Micro Consulting  
Savin Corporations  
Thompson Brothers Grass

### CORPORATE MATCHING GIFTS

ARCO  
IBM Corporation  
Johnson and Johnson  
Pepsico Foods, International  
United Technologies/Otis  
Texas Instruments  
Instrument Tech. Corporation  
Tandy Corporation

---

Charitable trusts and foundations are formed by forward-minded individuals to support a wide variety of worthy causes. Theatre Three is grateful for these organizations and the prestige which is associated with their gifts.

The ARCO Foundation  
Theodore & Beulah Beasley Foundation, Inc.  
The Clampitt Foundation  
Carr P. Collins Foundation  
The Dresser Foundation  
Ben E. Keith Company  
Henry Foundation  
Eugene McDermott Foundation  
Mobil Foundation  
The Moss Foundation  
The Meadows Foundation  
The Pollock Foundation  
The Santa Fe Southern Pacific Foundation  
Southwestern Bell Foundation  
The Stemmons Foundation

---

Theatre Three is supported, in part, by the following government agencies:

The City of Dallas, Office of Cultural Affairs  
The Texas Commission on the Arts  
The National Endowment for the Arts

---

Theatre Three also wishes to extend its appreciation to two organizations which have contributed more than \$15 million to the arts in Dallas over the last two decades. The education and involvement of their members in cultural affairs has incalculably made Dallas a more rich and interesting place to live.

The 500, Inc.  
TACA

# We've impressed people who think they've seen everything.

Take Valerie.  
Loves New York, toler-  
ates Dallas. Can't stand  
outdoor picnics. Never  
stands in line, and  
doesn't pay for drinks.  
Idea of a rough day is  
misplacing her keys. Not  
easily impressed. Though  
she did take off her sunglasses



## QUADRANGLE GRILLE

once at the  
Quadrangle Grille  
to get a better look  
at her Aztec Salad.

The Quadrangle • 2800 Routh St.  
Howell St. Entrance • Dallas • 979-9022

We're two blocks from  
the Routh St. trolley stop.

## Theatre Three's Company

**NORMA YOUNG**, *Founding/Artistic Director*

**JAC ALDER**, *Executive Producer-Director*

### ARTISTIC STAFF/PRODUCTION

Cheryl Denson, *Associate Producer*

Laurence O'Dwyer, *Associate Director*

Terry Tittle Holman, *Production Stage Manager*

Terry Dobson, *Musical Director, Assistant to Mr. Alder*

Diana Figueroa Story, *Costumer*

Rose Warren, *Assistant to the Costumer*

Tristan Wilson, *Technical Director*

Robert McVay, *Master Electrician*

### ADMINISTRATION

Chris Harsdorff, *Director*

Julie Navar, *Administrative Assistant*

Mark Hadley, *Administrative/Production Coordinator*

### BUSINESS AFFAIRS

Kay Craft Jeffreys, *Comptroller*

Gary Mead, *Systems Manager*

### DEVELOPMENT

Randall White, *Director*

Stephen Couch, *Coordinator*

### PUBLICITY/PUBLIC RELATIONS

Gary Yawn, *Publicist*

Shannette Hoelscher, *Assistant to the Publicist*

Susan Kandell, *Production Photographer*

### CUSTOMER SERVICES/SALES

David Hadlock, *Director of Marketing*

Mickey Shanahan, *Box Office Manager*

Nancy Ware, *Assistant Box Office Manager*

Pamela Moore, *House Manager*

Jody Stout, *House Manager*

Shannette Hoelscher, *Group Sales Coordinator*

Richard Rollin, *Sales Manager*

Jack Bosse, *Assistant Sales Manager*

### RESERVATIONISTS:

Amy Mills Jackson, Paul Landin, Katie Porter,

Brian Rhodes, Peggy Pharr Wilson, Alonso Duralde

### MARKETING REPRESENTATIVES:

John Adams, Judy Alban, Steve Baker, Alan Easterling, Jennifer Hudson,

Shari Lewis, Kathleen Rodger, Michelle Sanders, Bret Strange,

Andy Tieman, Monte Woods

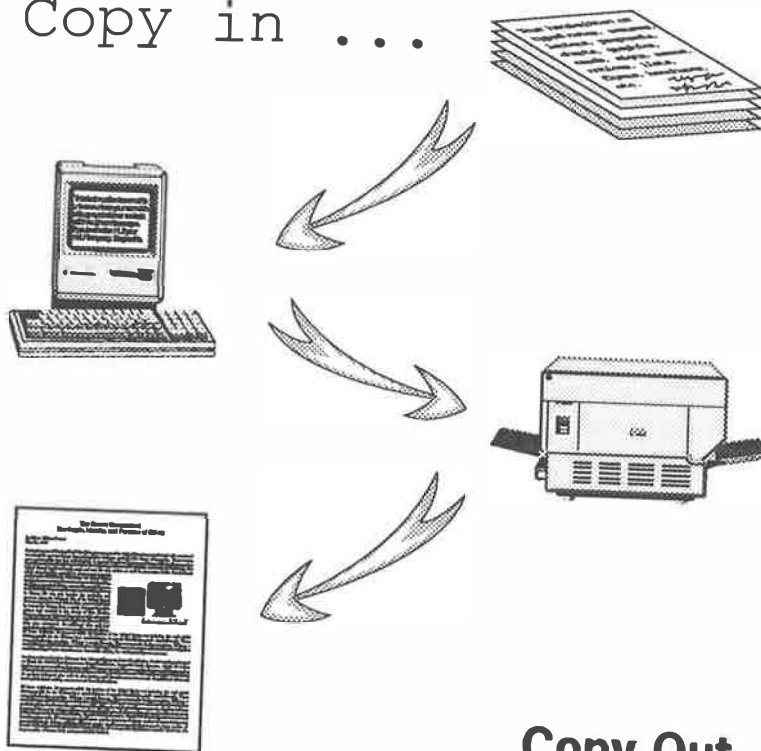
### INTERN STAFF

J. Kyle Hannah, *Journeyman*

Diana Mosier, *Intern*

Nancy Losey, *Intern*

Copy in ...



Copy Out.

The BEST way to give your . . .

- ☒ Resume      ☒ Presentation
- ☒ Newsletter    ☒ Forms

. . . that extra something.

DESIGN ■ COPY ■ PRINT

**alphagraphics®**

Printshops Of The Future

4325 Alpha Rd. Dallas, Texas 75244

(214) 239-2679 FAX: (214) 239-2680

## Theatre Three's Board Of Directors

### MEMBERS

Mr. & Mrs. Cleveland G. Clinton, *Chair*  
 Mr. & Mrs. Jac Alder  
 Mr. & Mrs. Greg Ballew (*The 500, Inc.*)  
 Dr. & Mrs. H. D. Bell  
 Mr. & Mrs. O. Paul Corley  
 Mr. & Mrs. Kenneth J. Haigler  
 Ms. Holly Hammond  
 Mr. Chris Harsdorff  
 Mr. & Mrs. Casey Hozer  
 Mr. Kenneth H. Hughes  
 Mr. & Mrs. Bruce Jones  
 Mr. & Mrs. Dave Lambert  
 Bob & Jodi Lisle  
 Mr. & Mrs. Marc Loewenthal  
 Mr. & Mrs. Pat Mayben  
 Mr. & Mrs. William Naxon  
 Mrs. Idelle Rabin (*Office of Cultural Affairs*)  
 Mrs. Elizabeth Rivera  
 Ms. Karen W. Robinson  
 Robert & Kathy Sherrod  
 Mr. Thomas C. Stark  
 Mr. & Mrs. John Strauss  
 Mr. Stephen Tacke  
 Mrs. William E. Tweed  
 Mr. & Mrs. Michael Vescuso  
 Mr. & Mrs. Bill Wachel  
 Mr. & Mrs. Herbert Webb  
 Mr. David Wells

### MEMBERS EMERITUS

Mr. & Mrs. Edgar C. Hughes  
 Mr. & Mrs. Dan M. Krausse  
 Mr. & Mrs. Patrick Mayben  
 Mr. & Mrs. John D. Wisenbaker

### FOUNDING BOARD PRESIDENTS

Mr. & Mrs. John D. Wisenbaker

### PAST BOARD PRESIDENTS

Mr. Michael Barlerin  
 Mr. & Mrs. Edgar C. Hughes  
 Mr. & Mrs. Clyde Moore  
 Mr. & Mrs. Anthony Wainwright  
 Mr. Pat Mayben



FORD IS THE OFFICIAL AUTOMOTIVE SPONSOR FOR THEATRE THREE.  
 LOCAL TRANSPORTATION FOR THEATRE THREE IS PROVIDED BY  
 THE DALLAS METROPOLITAN FORD AND LINCOLN-MERCURY DEALERS.

## OUTSTANDING THEATRE



**1960-61 SEASON**  
WAITING FOR GODOT - Beckett  
LILLOM - Molnar  
HOME OF THE BRAVE - Laurents  
THE RELUCTANT DEBUTANTE - Home  
BORN YESTERDAY - Kean  
SABRINA FAIR - Taylor  
THE LADY'S NOT FOR BURNING - Fry

**1961-62 SEASON**  
SIX CHARACTERS IN SEARCH OF AN  
AUTHOR - Pirandello  
THE MOON IS BLUE - Herbert  
THE TAVERN - Cohen  
LOOK BACK IN ANGER - Osborne  
MRS. MCHING - Chase  
THE LITTLE FOXES - Beckett  
WAITING FOR GODOT - Beckett  
THE MEMBER OF THE WEDDING -  
McCullers  
PHYSICIAN IN SPITE OF HIMSELF -  
Moliere  
DON JUAN IN HELL - Shaw

**1962-63 SEASON**  
TO GETTYSBURG - Vilet  
AND SOMEDAY I'LL DIE - Maxken  
ROCK A BYE CHARLIE - Dunn  
PUBLIC VICTORIOUS - Davis  
THE NEW BURKARD - Krasner/Alder  
ALL THE WAY HOME - Moser  
THE HOSTAGE - Gahan  
TWO FOR THE SEESAW - Gibson  
JULIUS CAESAR - Shakespeare  
LIGHT UP THE SKY - Hare

**1963-64 SEASON**  
THE 200 STORY - Albee  
THE TIME OF YOUR LIFE - Sturges  
THE NIGHT OF THE KIWANOA - Williams  
COURT OF ORACULA - Albee/T. Dwyer  
CHAMPAGNE COMPLEX - Sturges  
THE AMERICAN DREAM - Albee  
THE CARETAKER - Pinter  
THE EMPEROR JONES - O'Neill

**1964-65 SEASON**  
ALICE IN WONDERLAND - Carroll  
ON DAD, POOR DAD - Regie  
THE LITTLE KUT - Rozovsky  
THURBER CARNIVAL - Thurber  
THE TENDER TRAP - Shuman/Smith  
TEA AND SYMPHONY - Anderson  
OF MICE AND MEN - Steinbeck

**1965-66 SEASON**  
SOLID GOLD CLOTH - Tschernow  
Kaufman  
IN WHITE AMERICA - Duberman  
THE GLASS MENAGERIE - Williams  
WRITE ME A MURDER - Regie  
THIEVES CARAVAN - Anouilh  
DARK OF THE MOON - Rostand/Barnes  
WIFT TO A SMALL PLANET - Vidal  
THE DEVIL'S DUEL - Shaw  
CATS EYE - Echols  
STOP THE WORLD - Hare/Warner/Bickson

**1966-67 SEASON**  
BUS STOP - Inge  
THE SPARE RIB - Clift  
A MAN'S A MAN - Brecht  
THE MAIDS - Genet  
MISS JULIE - Strindberg  
ARSENIC AND OLD LACE - Krasner  
A FUNNY THING HAPPENED - Sondheim  
Gelbart/Shreve/Levine

**1967-68 SEASON**  
THE BOYFRIEND - Wilson  
BIR - Living  
PANTALAZZE - de Chateaune  
THE INNOCENTS - Archibald  
STOP THE WORLD - Newley/Bricusse  
THE GREAT SEBASTIANS - Lindsay &  
Crause

**1968-69 SEASON**  
GALLOW'S HUMOR - Rabinowitz  
THE CAVE DWELLERS - Sanyan  
THE REAR OF THE GREASEPAINT -  
Newley/Bricusse  
THE MIRACLE WORKER - Gibson  
THE VENETIAN TWINS - Goldoni/Alder  
THE FANTASTICKS - Jones/Schmitt

**1969-70 SEASON**  
TARTUFFE - Moliere/Wilbur  
THE ADDING MACHINE - Rice  
LOOT - Orton  
CELEBRATION - Jones/Schmitt  
HEDDA GABLER - Ibsen  
A FUNNY THING HAPPENED -  
Sondheim/Gelbart/Shreve/Levine

**1970-71 SEASON**  
THE SKIN OF OUR TEETH - Walker  
THE LAST SWEET DAYS OF ISAAC -  
O'Neill  
MISALLIANCE - Shaw  
COME BACK, LITTLE SUEBA - Pop  
ROBOY LOVES AN ALBATROSS -  
Alexander  
ANYTHING GOES - Porter/Crause/Lindley

**1971-72 SEASON**  
THE PLAY'S THE THING - Molnar  
THE ME HOBOY KNOWS - Shapiro  
Palmieri/Wilbur  
INDIANS - Kopp  
THE PHILANTHROPIST - Hampton  
COLETT - Jones  
THE VEGETARIAN TWINS - Goldoni/Alder  
THE RAINMAKER - Nida

**1972-73 SEASON**  
TWICE OVER LIGHTLY - Coward  
COMPANY - Furth/Sondheim  
THE IRREGULAR HEART - Anouilh  
AND MISS REARON DRINKS A LITTLE -  
Zinn  
THE EMPEROR JONES - O'Neill  
THE FRONT PAGE - Neugebauer  
SCHOOL FOR WIVES - Molnar/Wilbur

**1973-74 SEASON**  
CARTERBURY TALES - Coghill/Hill  
Newley/Sturges  
THE BOYS IN THE BAND - Coward  
THE IMPORTANCE OF BEING EARNEST -  
Wilde  
ELECTRA - Giraudoux  
RUDDIGORE - Gwynn/Sullivan  
GODSPELL - Tebbel/Schwartz  
SCUBA DUBA - Friedman

**1974-75 SEASON**  
GINGERBREAD LADY - Simon  
TWIGS - Furth  
ONE FLEW OVER THE CUCKOO'S NEST -  
Rasbman  
THAT CHAMPIONSHIP SEASON - Alder  
THE MISANTHROPE - Moliere  
WHISPERS ON THE WIND - Klotz &  
Crane  
PURLIE - David/Geld/Udeli

**1975-76 SEASON**  
WHEN YOU COME BACK RED RYDER -  
Meyer  
SHELTER - Cramer/Ford  
THE MEMBER OF THE WEDDING -  
McCullers  
A VIEW FROM THE BRIDGE - Miller  
SEVEN KEYS TO BALDAPATE - Cohen  
CORRAL - Albert & Orth  
S' WONDERFUL - Gershwins/Alder

**1976-77 SEASON**  
FALLEN ANGELS - Coward  
JEFFERS CREEPERS, HERE'S HARRY -  
Warner/Alder  
ROAD TO ROME - Sherman  
LITTLE MARY SUNSHINE - Bergman  
IN CELEBRATION - Stoney  
TARTUFFE - Moliere/Wilbur  
THE FANTASTICKS - Jones/Schmitt

**1977-78 SEASON**  
ROBBIE BRIDE GROOM - Harty/Litvay  
THE LEARNED LADIES - Molnar/Wilbur  
LADIES AT THE ALAMO - Zindel  
PORTER, PLEASE - Porter/Alder  
AFTER THE FALL - Miller  
CANDIDE - Bernstein/Wheeler/Wilbur  
SLEUTH - Shaffer  
OTHERWISE ENGAGED - Gray

**1978-79 SEASON**  
THE RUNNER STUMBLES - Scott  
THE SHADOW BOX - Christofel  
HAPPY END - Brecht/Wiel  
JUMPERS - Shoppard  
THE MISER - Moliere  
STARTING HERE, STARTING NOW -  
Maltby/Shaw  
SIDE BY SIDE BY SONDHEIM - Sondheim  
SMALL CRAFT WARNINGS - Williams

**1979-80 SEASON**  
NEW YORK IDEA - Mitchell  
\*DRINKS BEFORE DINNER - Doctorow  
CHICAGO - Ebo/Fosse/Kasper  
\*TAKING AWAY OF LITTLE WILLIE -  
Griffin  
THE SEAGULL - Chekov  
\*HOW I GOT THAT STORY - Gray  
FOR COLORED GIRLS  
PRESENT LAUGHTER - Coward  
YIP, YIP, HOORAY!! - Harburg/Alder

## THREE DECADES ... AND MORE TO COME

**1980-81 SEASON**  
A WOMAN OF NO IMPORTANCE - Wilde  
HOUSE OF FLOWERS - Aron/Capote  
THE MISS FIRECRACKER CONTEST -  
Haley  
STRIDER - Tolstoy/Rozovsky  
BEDROOM FARCE - Ayckbourn  
RISE AND SHINE - Berlin/Alder/Shell  
THE ELEPHANT MAN - Pomerance  
\*FATHER DREAMS - Gallagher

**1981-82 SEASON**  
\*EDEN COURT - Geyer  
BILLY BISHOP GOES TO WAR - Gray  
\*SPLENDID REBELS - Anisowitz  
WORKING - Tarras/Schwartz/Hanson  
DESIGN FOR LIVING - Coward  
PHYSICIAN IN SPITE OF HIMSELF -  
Alderson  
THE CONDOLEERS - Gilbert/Sullivan  
THE WORLD OF PAUL CRUME - Cramer  
Meyers  
CLOSE OF PLAY - Gray

**1982-83 SEASON**  
\*REJOICE, DANG IT, REJOICE! - Cramer/  
Haley  
SHE STOOPS TO CONQUER - Goldsmith  
\*THE CRASHING OF MOSES FLYING BY -  
Leifer  
\*ANTONY AND ME - Johns  
\*WHY AM I ALWAYS ALONE - ... - Johns  
TRUE WEST - Shepard  
SWEENEY TODD - Sondheim/Wheeler  
MAN AND SUPERMAN - Shaw  
DON JUAN IN HELL - Shaw  
\*FRATERNAL ORDER - Foster  
TOMFOOLERY - Leifer  
\*THE QUALITY OF MERCY - Hall  
\*FINAL PASSAGES - Schickel  
MORNING'S AT SEVEN - Osborn

**1983-84 SEASON**  
FOR COLORED GIRLS - ... - Shange  
SECOND THRESHOLD - Barry w/  
Sherwood  
CHARLOTTE SWEET - Colby & Marice  
\*THE POIR - Collins  
A DAY IN HOLLYWOOD - ... - Vosburgh/  
Lazarus  
THE ACTOR'S NIGHTMARE - During  
THE WAKE OF JAMES FOSTER - Harty  
SCHOOL FOR WIVES - Molnar/Wilbur  
ROSENCANTZ AND GUILDENSTERN  
ARE DEAD - Shoppard  
SISTER MARY IGNATIUS - ... - Durang

**1984-85 SEASON**  
\*DISTILLING SPIRITS - Golan  
YOU'RE GONNA LOVE TOMORROW -  
Sondheim  
\*THE ELEVENTH HOUR - Chambers  
QUARTERMAINS TEARS - Chambers  
\*TALK RADIO - Bergman  
\*PIANO - Hall  
\*ARMS AND THE MAN - Shaw  
\*ASSAULT AND ASSAULTMENT - Redick  
\*OBLOMOV - Morlock  
\*FOXPIRE - Cooper/Cramer  
ANGRY HOUSEWIVES - Collins/Herry  
OUTSIDE WACO - Griffin  
\*WARHORSE - Hare  
\*ONE ACTS - Ratcliffe  
\*A DAY IN THE LIFE - Hawkins  
\*OH DAMMIT! AN EVENING WITH THE  
ICONOCLAST - Flemmons

**1985-86 SEASON**  
LITTLE SHOP OF HORRORS - Aschman &  
Morgan  
PAINTING CHURCHES - Howe  
HOMECOMING - Duff  
ANYTHING GOES - Berlin/Levine/Brace  
\*ON WEDDINGS AND DIVORCES -  
Simpson  
\*SMALL NIGHTS OF TONOR - Bonham  
\*MUD IN YOUR EYE - Shubin  
A... MY NAME IS ALICE - Hertz  
SEASON'S GREETINGS - Ayckbourn  
\*HAPPY LIES - de Maribus  
\*SAFETY - Griffin

**1986-87 SEASON**  
MA RAINY'S BLACK BOTTOM - Wilson  
PATRIPORCH - Harty  
THE SHOWBOY - Kelly  
A LITTLE NIGHT MUSIC - Sondheim/  
Whitney  
ANIMAL FARM - Orwell/Plasse  
LIES AND LEGENDS - Chapel  
VOICES UNsilenced - various

**1987-88 SEASON**  
EL GUSTICADOR - Uscig  
TOPGIRLS - Churchill  
SAFETY - Griffin  
WALTZ OF THE TONEDORS - Anouilh  
BENEFACATORS - Frayn  
LIGHT UP THE SKY - Hart  
A LUTY MUSICAL - Sweet/Marten

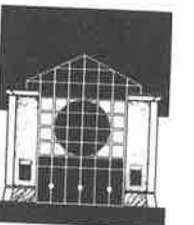
**1988-89 SEASON**  
STORYTELLERS - various  
CLAPTRAP - Friedman  
CLAP UP HANDS - Gershwins  
TAKING STEPS - Ayckbourn  
THE MIDDLE OF NOWHERE - Newman  
\*COOKIE AND LEROY - Bennett  
\*CRAZY FROM THE HEART - Vinterneil  
\*AND THE MEN SHALL ALSO GATHER -  
Reisen

**1989-90 SEASON**  
\*BANG BANG BLUES - Gomer  
A QUARELL OF SPARROWS - Duff  
THE COLORED MUSEUM - Wolfe  
HUNTING COCKROACHES - Galloway  
THE FANTASTICKS - Jones/Schmitt

**1990-91 SEASON**  
VOICES UNsilenced - various  
BROADWAY - Alcott/Dunning  
THE FANTASTICKS - Jones/Schmitt  
THE FANTASTICKS - Jones/Schmitt  
NOTHING SACRED - Walker  
WOMAN IN MIND - Ayckbourn  
THE ROAD TO MECCA - Fugard  
A FUNNY THING HAPPENED - ... -  
Sondheim/Gelbart/Shreve/Levine  
GRUUCHO, A LIFE IN REVUE - Marci  
Fisher

**1990-91 SEASON**  
JOANNA'S HUSBAND AND DAVID'S WIFE -  
Harty  
EASTERN STANDARD - Greenberg  
LONDON ASSURANCE - Roccaut  
ACCOMPLICE - Holmes  
JOE TURNER'S COME AND GONE -  
Wilson  
WEILL WOMEN - Weill/Alder  
\*WORLD OF BEAUTY - Pinsky  
\*THE LITTLE TOMMY PARKER  
CELEBRATED COLORED MINSTREL  
SHOW - Brown

Theatre Three, since its initial season, has  
produced plays for children under  
programs including Pines Playhouse,  
Cohen Playhouse and Turntable  
Theatres.  
\*Plays produced in short runs, but with  
rehearsal and/or readings.



**1991-92 SEASON**  
CAROL CLOKE IN DRESS UP  
STRINGBEAN - Robertson  
WAITING FOR GODOT - Beckett  
HEARTBEATS - McIlwain  
RUMORS - Simon  
THE FANTASTICKS - Jones/Schmitt  
SHADOWLANDS - Ayckbourn  
THE HEIDI CHRONICLES - Wasserstein

## Hewlett-Packard sets the stage for success.

With any box office hit there is a team of stars working off-stage to bring you a dazzling performance.

Hewlett-Packard helps the best achieve stardom.

There is a better way.

In much the same way, the HP 3000 family of computers can work behind the scenes to bring your business outstanding reviews.



With Compliments of

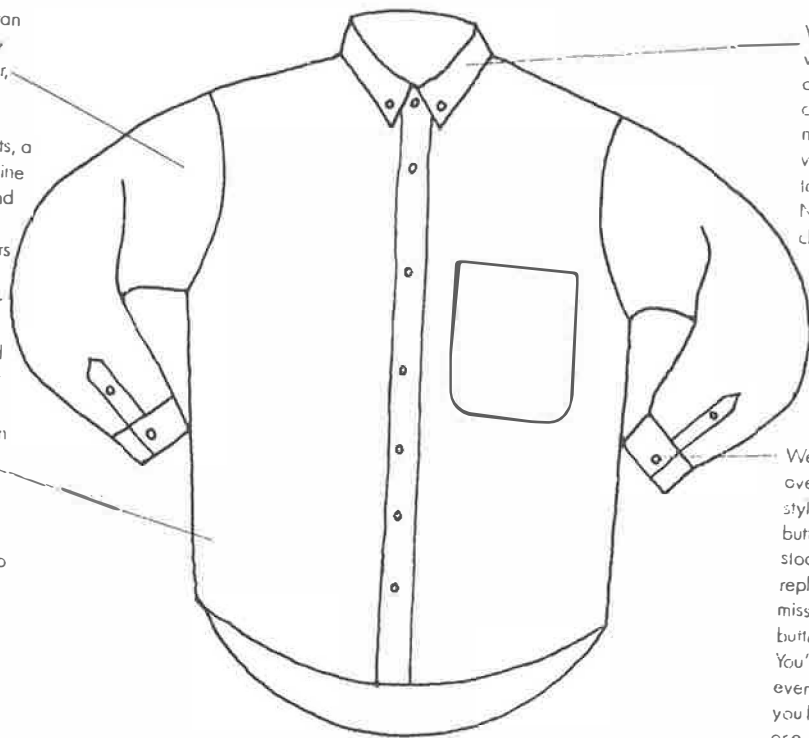
# Bear, Stearns & Co. Inc.

# BEAR STEARNS

If you don't bring your clothes to Manhattan,  
you're being taken to the cleaners.

Manhattan  
uses only  
hot water,  
gentle  
synthetic  
detergents, a  
non-chlorine  
bleach and  
optical  
brighteners  
- all to  
make your  
shirts last  
longer and  
look better

Manhattan  
uses four  
different  
grades of  
starch so a  
person who  
wants light  
starch  
doesn't get  
heavy  
starch, but  
light starch.



We inspect  
wrinkles on  
collars and  
cuffs, if  
necessary,  
we hand  
touch-up.  
No extra  
charge.

We keep  
over 50  
styles of  
buttons in  
stock to  
replace  
missing  
buttons.  
You'll never  
even know  
you lost  
one.

Why pay \$20 or more for a nice shirt, then pay a discount cleaners 99¢ to slowly destroy it. Instead, send your shirts to Manhattan Cleaners. For only a few dimes more, we restore them, make them new again, and make you look great. And we stand behind everything we do.



## Manhattan Cleaners

<b>Pickup &amp; Delivery</b> 1345 Luven 749-0621	<b>Preston Center</b> 368-0500	<b>Loma Alto &amp; Lammon</b> 521-3961	<b>Knox &amp; McKinney</b> 522-4028
<b>Preston Forest</b> 490-1547	<b>Willow Creek</b> 373-4863	<b>Hall &amp; McKinney</b> 871-2537	<b>Red's Downtown</b> Field & Patterson 254-4459



## STARRING LESLIE UGGAMS

in this exciting premiere production of a  
play-with-music based on the early career  
of legendary singer-actress **Ethel Waters**,  
first known on the Black vaudevillian  
circuit as "Mama Stringbean."

By Lanie Robertson  
Directed by Glenn Casale

Featuring

AKIN BABATUNDE  
GROVER COULSON, JR.  
GIL GLASGOW  
BILLY JONES  
CONNIE NELSON  
JASON PRATT  
MICHAEL CAL STEWART

# COMING★NEXT

May 25 Thru July 6, 1991

# We're in touch with your community.

**T**he *Dallas Morning News* is more than Dallas-Fort Worth's leading newspaper. We're also a responsible corporate citizen. Through our support and sponsorship of numerous civic and educational programs, sports events, arts and cultural activities, festivals, exhibitions and award programs, we're investing in your community. And in *you*.

Our commitment goes beyond meeting the highest journalistic standards to produce an accurate and reputable news source. As we strive to serve the needs and interests of our readers every day, our involvement extends into *your* neighborhood to help improve the quality of life in Dallas-Fort Worth... for *all* of us.

Community service. Just one more reason why *The Morning News* is a newspaper of distinction.

**The Dallas Morning News**