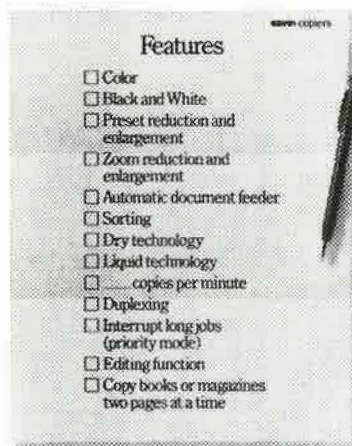


Sept 15 - Oct 20



**By Dion
Boucicault**

Theatre Three
IN THE QUADRANGLE
2800 ROUTH STREET
DALLAS, TEXAS 75201



The most adjustable feature of Savin copiers.

At Savin, we believe the best time to make adjustments to your copier is before you buy one. And that means selecting a copier that has as many options as you need. Or as few.

Which is exactly what you'll get from Savin.

We offer everything from simple desktop copiers to ones that reduce and enlarge. Copy on both sides. Collate. Even copy in full color.

And only Savin offers you the option of liquid technology. Proven to make your copier last longer.

Then there are our standard features. Like one of the best guarantees in the industry. A local dealer and service network. And, of course, the value and dependability that's synonymous with the Savin name.

So stop in and show us your checklist.

Chances are, it'll be a perfect match to one of our copiers.

SAVIN
Follow the leaders.

DALLAS BRANCH
SAVIN CORPORATION
2389 MIDWAY ROAD
CARROLLTON, TEXAS 75006
214-931-1700

Hey! It's too early to go home, yet!
Come discuss the Show over Italian
Eats, Snappy Hot Pizza or Custom
Coffee Drinks and Dessert on the
Patio. You'll probably know some People!

Just 3 blocks away...
Walk over or catch
the northbound
Trolley Car!

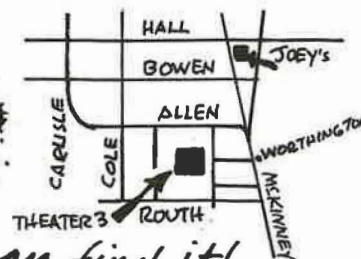
Serving Food 'til 1am,
Late Night Silliness
'til 2am Every Nite!

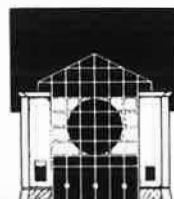


No Dress Code, Reservations
or Serious "Attitudes"

3232 McKinney Ave.
at Hall St. • 754-0380

Tons o' Free Parking if you can find it!





NORMA YOUNG
Founding/Artistic Director

JAC ALDER
Executive Producer-Director

Theatre Three

In The Quadrangle 2800 Routh Street Dallas, Texas 75201

HOW TO OPEN TO RAVE REVIEWS.

First, do something to get people's attention. Like offer high quality products. Then, do something worthy of their praise. Like offer high quality service.

With combined assets of almost 5 billion dollars, we're settling in for a long successful run as the largest Texan-run bank in Texas. And if you missed our opening day, relax, we're giving encore performances daily.

TEAMBANK
MEMBER FDIC

LONDON ASSURANCE

by **DION BOUCICAULT**

Directed by **JAC ALDER**

Featuring (in alphabetical order)

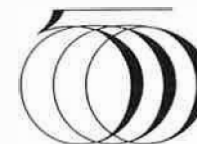
**GEORGIA CLINTON
ERIC GALATAS
LYNN MATHIS
RYLAND MERKEY
LAURENCE O'DWYER
THOMAS OWEN**

**ELAINE PFLEIDERER
BLAIR SAMS
MALCOLM SIMPSON
TERRY VANDIVORT
TREY WALPOLE
CHRIS WESTFALL**

Associate Producer **CHERYL DENSON**
Scenic Design by **HARLAND WRIGHT**
Costume Design by **DIANA FIGUEROA STORY**
Lighting Design by **LINDA BLASE**
Sound Design by **TRISTAN WILSON**
Production Stage Manager **TERRY DOBSON**
Assistant to the Director **MARK HADLEY**

First Preview: Saturday, 15 September 1990

Opening: Wednesday, 19 September 1990



LONDON ASSURANCE is underwritten, in part, by **THE FIVE HUNDRED INC**
and sponsored by **The Dallas Morning News**

LONDON ASSURANCE was first performed on Thursday, 4 March 1841,
at the Theatre Royal, Covent Garden, London.

We've impressed people who think they've seen everything.

Take Valerie.
Loves New York, toler-
ates Dallas. Can't stand
outdoor picnics. Never
stands in line, and
doesn't pay for drinks.
Idea of a rough day is
misplacing her keys. Not
easily impressed. Though
she did take off her sunglasses



once at the
Quadrangle Grille
to get a better look
at her Aztec Salad.

QUADRANGLE GRILLE

The Quadrangle • 2800 Routh St.
Howell St. Entrance • Dallas • 979-9022

*We're two blocks from
the Routh St. trolley stop.*

Cast of Characters

Cool, valet to Sir Harcourt.....Terry Vandivort
Charles Courtley, son of Sir Harcourt.....Chris Westfall
Dazzle, friend of Charles.....Eric Galatas
Sir Harcourt Courtley.....Laurence O'Dwyer
Max Harkaway, uncle of Grace.....Ryland Merkey
Pert, servant to Grace.....Blair Sams
James, servant to Max.....Malcolm Simpson
Grace Harkaway, betrothed to Sir Harcourt...Elaine Pfleiderer
Mark Meddle, a country lawyer.....Lynn Mathis
Lady Gay Spanker, a horsewoman.....Georgla Clinton
"Dolly" Spanker, husband of Lady Gay.....Trey Walpole
Solomon Isaacs, a creditor of Charles.....Malcolm Simpson
Jenks, a lawyer engaged to Pert.....Thomas Owen

Act One

Scene One: *Sir Harcourt's London home; a spring morning*

Scene Two: *Arrival Court, Oak Hall; two days later*

Scene Three: *Drawing Room, Oak Hall; evening, two days later*

-Intermission: Fifteen Minutes

Act Two

Scene One: *Parlor, Oak Hall; after dinner*

Scene Two: *Terrace, Oak Hall; 11 pm the next night*

Scene Three: *Parlor, Oak Hall; immediately following*

IF YOU'RE NOT WEARING IT, SELL IT

You can't enjoy your jewelry if it's in your safe deposit box. Sell it for immediate cash. We purchase fine gems, diamonds and art objects. No consignment, conditions or delays. Please come in or telephone 214-358-0838 for a confidential consultation.

WALNUT COIN & JEWELRY
Exchange

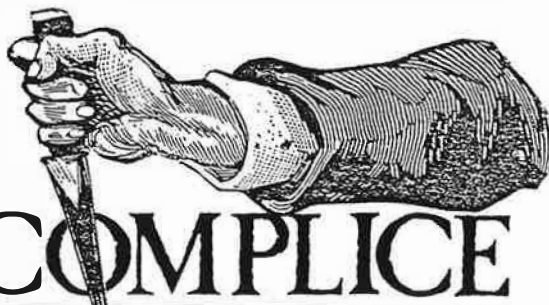
3720 Walnut Hill at Marsh

Daily 10 am to 6 p.m.

Sat. 'till 3 p.m.

Next At Theatre Three...

October 27th thru December 2nd



ACCOMPLICE

a new sexy, funny thriller by
RUPERT HOLMES

"ACCOMPLICE is part murder mystery, part sex farce,
and completely entertaining...it's suspenseful, charming, and funny."

David Patrik Stearns, USA Today

"Best thriller since SLEUTH and twice as clever...it stuns you."

Rex Reed, The New York Observer

TONIGHT WAS MADE POSSIBLE BY YEARS OF SOLO PERFORMANCES.

Long, lonely hours.
Broken strings. Sour notes.
It takes a lot of hard work to play.
Yet, when the curtain goes up,
all we're aware of is beautiful music.

At ARCO, we know how
much energy it takes to excel.

We applaud all those
who make performing an art.

And everyone who works to
reach the high notes.



ARCO Oil and Gas Company

Performers

GEORGIA CLINTON (*Lady Gay Spanker*) most recently portrayed Lily Langtry in the Dallas Children's Theatre production of *SHERLOCK HOLMES AND THE BAKER STREET IRREGULARS*. This past year she played the title role in *THE SNOW QUEEN* for D.C.T., and appeared in *DADDY'S DYIN' (WHO'S GOT THE WILL?)* at Casa Manana and *BROADWAY BOUND* at Stage West. Georgia's favorite roles at Theatre Three include: Frances Black in *LIGHT UP THE SKY*, Ghislaine in *THE WALTZ OF THE TOREADORS*, Maggie in *AFTER THE FALL*, and Jane in *FALLEN ANGELS*.*

ERIC GALATAS (*Dazzle*) is pleased as punch to be at Theatre Three. He recently appeared as the newspaper reporter in *SHALLOW GRAVE* for Stages '90. At Stage West he portrayed Edmund in *KING LEAR* and in two seasons with Fort Worth's Shakespeare in the Park was seen as Claudio in *MUCH ADO ABOUT NOTHING* and Ferdinand in *THE TEMPEST*. A graduate of Southern Methodist University's Actor Training Program, his educational credits include *THE RIMERS OF ELDRITCH*, *THE WATER ENGINE*, and *YOU CAN'T TAKE IT WITH YOU*, directed by the late John Hirsch. Other credits include a season with the Texas Shakespeare Festival in Kilgore and *THE REAL INSPECTOR HOUND* and *THE MOUSETRAP* at the Strand Street Theatre in Galveston, Texas, from whence he hails.



"It is art that makes life, and I know of no substitute." —Henry James

Mobil Foundation, Inc.



Herbert Webb

I N C O R P O R A T E D

SHIPPING ROOM SUPPLIES AND

INDUSTRIAL MARKING EQUIPMENT

"WE HELP COMPANIES MAKE THEIR MARK"

214-630-7191

KAYEMCO ENTERPRISES

COMPUTERS • CONSULTING • HARDWARE • SOFTWARE

KAYEMCO ENTERPRISES is a full service computer consulting firm. When asked, "What does KAYEMCO do?", the answer is simply: "As regards PC's, you name it, KAYEMCO does it."

214/520-9621

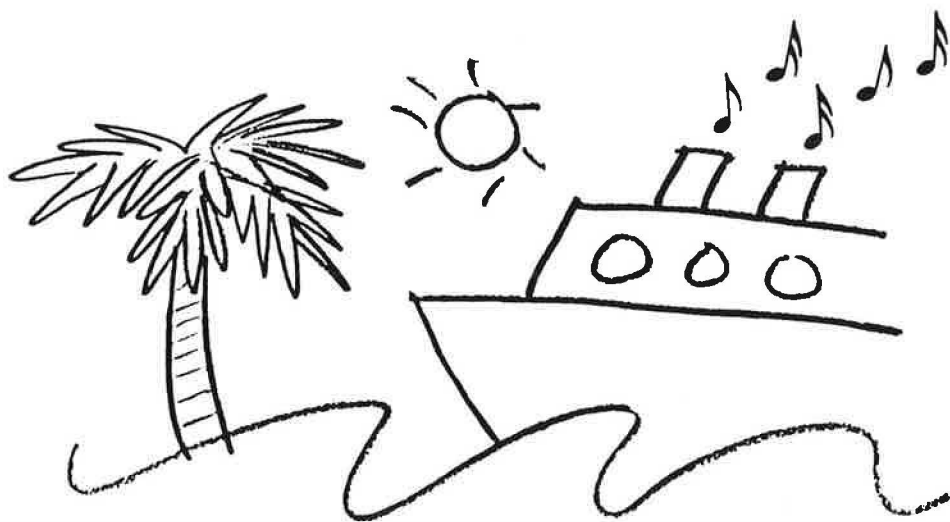
KAYEMCO ENTERPRISES

Performers

LAURENCE O'DWYER (*Sir Harcourt Courtly*) charmed Theatre Three audiences in last season's finale, *A FUNNY THING HAPPENED ON THE WAY TO THE FORUM*, as the crafty slave Pseudolus. For the 1989 season, he received the Dallas Critics Forum Awards for Nikolai Kirsanov in Theatre Three's *NOTHING SACRED* and for Fistula in Dallas Theater Center's *TEMPTATION*. His recent Theatre Three appearances include: *WOMAN IN MIND*, *A QUARREL OF SPARROWS*, and *THE WALTZ OF THE TOREADORS*. Larry has directed such Theatre Three hits as *LITTLE SHOP OF HORRORS*, *ANIMAL FARM*, *THE SHOW-OFF*, *MA RAINEY'S BLACK BOTTOM*, *A LUV MUSICAL*, and *LIGHT UP THE SKY*. He recently directed *TUMBLEWEED THEATRICALS*, presented for DISD second-graders. Larry also created Theatre Three's Grimm Magician Players and has written and directed most of their productions. At the South Coast Repertory Theatre he performed in Beth Henley's *THE DEBUTANTE BALL*. A graduate of Goodman Memorial Theatre in Chicago, he has served as Chairman of the Drama Department at Bennington College and is Theatre Three's Associate Director.*

LYNN MATHIS (*Mark Meddle*) was last seen as Lycus in the hit musical *A FUNNY THING HAPPENED ON THE WAY TO THE FORUM*. He is one of Dallas' busiest actors and is glad to be doing his seventh show since January, including: *THE BOYS NEXT DOOR* and *KING LEAR* at Stage West and *AS YOU LIKE IT* at the Ft. Worth Shakespeare Festival. A familiar face at Theatre Three and Dallas Theater Center, Lynn is remembered by Theatre Three fans as Orin in *LITTLE SHOP OF HORRORS*, Harry Berlin in *A LUV MUSICAL*, Boxer in *ANIMAL FARM*, and Leslie in *TAKING STEPS*, for which he won the Patron's Choice Favorite Supporting Actor Award. At Dallas Theater Center he's been seen as Antonio in *THE TEMPEST*, Doris in *DIARY OF A SCOUNDREL*, Marley's Ghost in *A CHRISTMAS CAROL*, Grez in *RED NOSES*, and the Prince in *ROMEO & JULIET*. On TV, he was seen as Bubba the "I can't find music I can drive to" man for KZPS and currently as the "Naysayer" for the Central Expressway renovation PSA spots. His wife Renee is Dallas' top wig specialist and has naturally red hair!*

RYLAND MERKEY (*Max Harkaway*) recently returned to Dallas from Seattle where he played Chris Christopherson in Eugene O'Neill's *ANNA CHRISTIE* at the Bathhouse Theatre. This is his second appearance at Theatre Three - the first was Uncle Harvey in *SEASON'S GREETINGS*. At Dallas Theater Center Mr. Merkey has appeared in Adrian Hall's productions of *RED NOSES* as Archbishop Monselet; *THE TEMPEST* as Gonzalo; *A CHRISTMAS CAROL '87* as The Ghost of Christmas Past. Other DTC roles include: Adrian in the premiere of Preston Jones' *REMEMBER*; Norman in *ON GOLDEN POND*; Mark Twain in *SAM*; Artie in *THE HOUSE OF BLUE LEAVES*; and Azdak in *THE CAUCASIAN CHALK CIRCLE*. Mr. Merkey has appeared with the Shakespeare Festival of Dallas for four seasons in such roles as Baptista in *THE TAMING OF THE SHREW* and the Earl of Gloucester in *KING LEAR*. His other stage credits include roles with the Houston Shakespeare Festival, Stage #1, New Arts Theatre, The Circle Repertory Company in New York and the New York Public Theater. He can currently be seen as the Series Host of the *AMERICAN ADVENTURE*, an American history telecourse on PBS.*



JAZZ CRUISE '90

TO THE CARIBBEAN

- A tribute to and starring Lionel Hampton.
- 7 days in the sun / 6 nights in heaven.
- 65 jazz musicians, 45 performances.

Call: Voyages & More, 294-2000

Jazz Ahoy!

KJZY 99.1

Performers

THOMAS OWEN (*Jenks*) has just moved to Dallas from Indiana where he attended Ball State University. After completing his B.S. degree in Theatre Performance, he was offered an Internship at Theatre Three, which he accepted. Tom has been working at the theatre for two months now. Some of his credits include: Mephistopheles in *DR. FAUSTUS*; Carl in *GETTING OUT*; David in *STICKS AND BONES*; Slim in *COWBOY MOUTH*; Lysander in *A MIDSUMMER'S NIGHT DREAM*; and Biff in *DEATH OF A SALESMAN*. Tom has also appeared in the film *EIGHT MEN OUT*, directed by John Sayles, and two ABC Afternoon Specials. Not only is he playing Jenks in *LONDON ASSURANCE*, he is also the understudy for Dazzle. Tom wishes to pursue a career in stage and film.

ELAINE PFLEIDERER (*Grace Harkway*) was last seen in Moving Target Theatre's *SIX WOMEN WITH BRAIN DEATH*, for which she won the Dallas Theatre Critics Forum Award for Outstanding Actress; she has since been recovering from the show's effects. Prior to *BRAIN DEATH* (and subsequent convalescence), Ms. Pfeleiderer was in Dallas Repertory Theatre's productions of *BIRDS OF PARADISE* and *THE IMPORTANCE OF BEING EARNEST* as Cecily Cardew, which she counts as one of her favorite roles. Again she won the Theatre Critics Award for Outstanding Actress for this role. Other favorites include: Peter Pan, Miss Hannigan in *ANNIE*, Ella Peterson in *BELLS ARE RINGING*, Ophelia in *HAMLET*, Anna Held in *TINTYPES*, and Arlie in *GETTING OUT*. She is thrilled, overjoyed and elated to be making her Theatre Three debut.*

BLAIR SAMS (*Pert*) Since moving to the Dallas area a year ago, Blair has performed with Fort Worth Shakespeare in the Park, Dallas Children's Theatre, and Theatre Three. A graduate of the University of Texas at Austin, her favorite roles include: Laura in *THE GLASS MENAGERIE*, Brooke in *NOISES OFF*, and Viola in *TWELFTH NIGHT*. Blair is represented by the Stone/Campbell Agency.

Hewlett-Packard sets the stage for success.

With any box office hit there is a team of stars working off-stage to bring you a dazzling performance.

Hewlett-Packard helps the best achieve stardom.

In much the same way, the HP 3000 family of computers can work behind the scenes to bring your business outstanding reviews.

There is a better way.



Performers

MALCOLM SIMPSON (*James/Solomon Issacs*) trained at a drama school in London for three years. He has played major roles at the Edinburgh Festival in Scotland, including Malvolio in *TWELFTH NIGHT* and *MACBETH* and Mr. Peggotty in *DAVID COPPERFIELD*. He produced and directed two of his own original musicals: *CASABLANCA AIRPORT* in London and *GOLDEN CITY* recently performed in Dallas. Malcolm is back in Dallas to promote his show and to further his career.

TERRY VANDIVORT (*Cool*) was most recently seen as Hysterium in last season's smash hit *A FUNNY THING HAPPENED ON THE WAY TO THE FORUM*. He was also in Theatre Three's comedy hit *TAKING STEPS* for which he received the Dallas Theater Critics Forum Award. His debut in Dallas theatre was two decades ago on Theatre Three's stage in *MISALLIANCE*. He has also been seen as Alec in *INFIDELITIES* directed by Laurence O'Dwyer. His other credits include *MISALLIANCE* (again) at Dallas Theater Center, *DIVISION STREET* at Stage #1, *THE TEMPEST*, *TWELFTH NIGHT*, and *LOVE'S LABOURS LOST* at Dallas Shakespeare Festival. In New York City, Terry appeared with Connie Nelson in *KENNEDY'S CHILDREN* and also in *THE SCHOOL FOR SCANDAL*. He is co-writer and director of the original musical revues *THE BINKEYS OF BROADWAY* and *CAT ON A HOT TIN STREETCAR* for Born-in-a-Trunk Productions.*

TREY WALPOLE (*"Dolly" Spanker*) was playing bass in his high school jazz band when a local community theatre called to find a string-bass player and a drummer. Trey said he would do it (although he had never actually seen a string-bass before). So, he and the drummer began their show-biz careers. The drummer went on to become rock star Kevin Paige, but Trey is imminently more successful, as he is making his Theatre Three debut, performing another in a series of characters 20 years older than himself. He has been seen in the DFW area in *FOOL FOR LOVE* at Theater Arlington, *KING LEAR* at Stage West, *TWELFTH NIGHT* in the Dallas Shakespeare Festival, and as the 8-foot tall title character in *BABAR* at the Dallas Children's Theatre.

CHRIS WESTFALL (*Charles Courtley*) returns to Theatre Three after spending the past year in Los Angeles, where he appeared (however briefly) on the NBC daytime drama, *DAYS OF OUR LIVES*. Theatre Three audiences may remember Chris as Matt in the 1988 production of *THE FANTASTICKS*. He has worked in numerous commercials and industrial films and wishes to thank the Kim Dawson Agency for their terrific support. Chris is a graduate of Chicago's Performing Arts High School and holds a degree in Theatre from SMU.**

Theatre Three operates under an agreement with Actors' Equity Association (AEA), the Union of Professional Actors and Stage Managers in the United States. *Member, AEA. **Membership Candidate, AEA.

About Dion Boucicault & "London Assurance"

DION BOUCICAULT (*Playwright*) wrote his first play at the age of eighteen. In 1838, he was the comic lead in his first professionally performed play, *A LEGEND OF THE DEVIL'S DYKE* at the Theatre Royal, Brighton. On March 4, 1841, *LONDON ASSURANCE* opened at the Theatre Royal, Covent Garden. The production received the unusually high number of sixty-nine performances that season. Boucicault was paid 300 pounds for his manuscript of *LONDON ASSURANCE*. Because French plays were very profitable in England, Boucicault went to France in 1844 to learn what he could, and returned to London in 1848 to cash in on his knowledge of French plays. In 1849, his adaptation of the French piece *THE WILLOW COPSE* was done at the Adelphi. After this success, he wrote a series of sentimental "cape and sword" melodramas for Charles Kean, manager of the Princess's Theatre. The most important of these plays were *THE CORSICAN BROTHERS* and *LOUIS XI*, both of which had a strong French influence. In 1853 he went to America and began to work in American theatre. Boucicault is best remembered for his three Irish melodramas, *THE COLLEEN BAWN*, staged in New York in 1860, *ARRAH-NA-POGUE*, which opened in Dublin in 1864, and *THE SHAUGHRAUN*, staged in New York in 1874. In 1888 he became a teacher at the recently established school of acting in New York. He died in September 1890.

Boucicault wrote over 150 plays and adaptations, ranging from high farce through sentimental comedy to sensational melodrama. Included among his stage pieces are pantomimes, musical interludes, and operettas, but after 1852 melodrama was his favoured mode. *LONDON ASSURANCE* was staged in the closest thing London had yet seen to a box set, and there is no doubt that public interest contributed to the production's success. It was an established favorite for over fifty years. Revived during the 1970's, *LONDON ASSURANCE* was recently a smash success on London's West End.

High Drama At Low Prices.

HALF PRICE BOOKS RECORDS & MAGAZINES®

DALLAS • 5915 E. N.W. Hwy • HIGHLAND PARK • 4234 Oak Lawn
NORTH DALLAS • 13388 Preston Rd. • GARLAND • 1560 N.W. Hwy.
RICHARDSON • 2100 Alamo Rd. • ARLINGTON • 2211 S. Cooper St.
All stores open 7 days a week.

Thanks!

Theatre Three is supported in part by a complex network of agencies, foundations, corporations, and individual patrons. Theatre Three strives to reflect the diversity and generosity of these sources through creative selection of quality programming and effective outreach activities.

By instituting a Performing Partnership with Theatre Three your company can become involved in one of the most dynamic cultural institutions in Dallas. Performing Partnerships are a way to help out while providing real return on your investment. Levels of involvement are listed below. Contact our development office for more details (871-2933).

Season Partnership (\$150,000 +)

Executive Producing Partnership (\$100,000 - \$149,999)

Producing Partnership (\$50,000 - \$99,999)

Associate Producing Partnership (\$25,000 - \$49,000)

Senior Partnership (\$10,000 - \$24,999)

Associate Partnership (\$5000 - \$9999)

Supporting Partnership (\$2000 - \$4999)

Corporate Partnership (\$1000 - \$1999)

Performing Partnership (\$500 - \$999)

Theatre Three applauds all those whose support makes our work possible including our thousands of Season Subscribers, ENCORE and BRAVO Campaign contributors. We appreciate the involvement of our patrons and urge you to let us know what's on your mind.

Individual Contributors to Theatre Three are recognized in each playbill and are awarded benefits including invitations to special events, discounts in local restaurants, and free beverages at intermission. Levels of giving are listed below. Contact our development office for more details.

Angels (\$5000)

Backers (\$2000)

Premiere Patrons (\$1000)

Directors (\$500)

Stars (\$333)

Featured Players (\$233)

Supporting Players (\$133)

Extras (\$33)

Theatre Three is supported, in part, by the following government agencies:

THE CITY OF DALLAS
THE NATIONAL ENDOWMENT FOR THE ARTS
TEXAS COMMISSION ON THE ARTS

Thanks!

Theatre Three also wishes to extend its appreciation to two organizations which have contributed more than \$15 million to the arts in Dallas over the last two decades. The education and involvement of their members in cultural affairs has incalculably made Dallas a more rich and interesting place to live.

THE 500, INC.
TACA

Charitable trusts and foundations are formed by forward-minded individuals to support a wide variety of worthy causes. Theatre Three is grateful for these organizations and the prestige which is associated with their gifts.

THEODORE & BEULAH BEASLEY FOUNDATION INC.
THE CLAMPITT FOUNDATION
CARR P. COLLINS FOUNDATION
THE DRESSER FOUNDATION
BEN E. KEITH COMPANY
HENRY FOUNDATION
EUGENE MCDERMOTT FOUNDATION
MOBIL FOUNDATION
THE MOSS FOUNDATION
SOUTHWESTERN BELL FOUNDATION
THE STEMMONS FOUNDATION

A COMMITMENT
TO SERVICE.



TUELECTRIC

Thanks!

Corporate funding plays an important part here at Theatre Three. Generous corporate contributors provide essential funding for overall operations and special projects. Their contributions indicate a level of involvement uncommon in the business world. Corporate giving enhances the quality of life not only for members of contributing organizations, but for the entire community as well.

Senior Partnership

ARCO

Associate Partnership

NORTHERN TELECOM, INC.
AMERICAN EXPRESS
NEIMAN MARCUS

Supporting Partnership

TU ELECTRIC-TEXAS POWER & LIGHT DIVISION
NCNB

Corporate Partnership

AT&T
CENTEX CORPORATION
DEAN WITTER REYNOLDS, INC.
KIM DAWSON AGENCY, INC.
MR. KENNETH HUGHES
HUNT OIL COMPANY
THOMPSON AND KNIGHT
UNITED TECHNOLOGIES/ OTIS

Performing Partnership

SOUTHLAND CORPORATION
TEXAS INSTRUMENTS
JOHNSON AND HIGGINS OF TEXAS, INC.
BEN E. KEITH COMPANY
MURRAY A. GOLDENBERG TEXTILES, INC.
CLOTHESHORSE ANONYMOUS
REALTY APPRAISAL CO., INC.
RETHREADS
HALF PRICE BOOKS/KEN GJEMRE
BASIL MARTINIZING OF CARROLLTON
WAGNER ACCOUNTING/CONSULTANTS, INC.



FORD is the official automotive sponsor for Theatre Three. Local transportation for Theatre Three is provided by the Dallas Metropolitan Ford and Lincoln-Mercury dealers.

Thanks!

In Kind Donations

BRADMARK BUSINESS SYSTEMS
SAVIN CORPORATION
GTE - SYLVANIA
PERRIER GROUP

Matching Corporations

IBM CORPORATION
JOHNSON AND JOHNSON
UNITED TECHNOLOGIES/OTIS
TEXAS INSTRUMENTS

Perhaps our most reassuring contributions come from the thousands of individuals who contribute more than \$100,000 annually. Donors listed below have contributed \$133 or more during the twelve months prior to publication. Contact our development office if there are any omissions or errors.

ANGELS

Mr. and Mrs. John Strauss

BACKERS

Mr. and Mrs. Cleveland G. Clinton
Mr. and Mrs. O. Paul Corley
Mr. and Mrs. Robert Lisle
Mr. and Mrs. L. J. Scott

PREMIERE PATRONS

Mr. and Mrs. Sam Catter
Mrs. Allen M. Early
Mr. and Mrs. C. Michael Gage
Mr. and Mrs. James A. Gibbs
Mr. Frances Goemmel
Deborah Greer
Mr. and Mrs. Edmund M. Hoffman
Mr. and Mrs. Casey R. Hozer
Mr. J. Erik Jonsson
Mrs. Louise Kahn
Herbert Webb
Mrs. W.W. Newton
Mr. and Mrs. L.J. Scott
Robert and Kathy Sherrard

DIRECTORS

Mr. Lance F. Ellis, Jr.
Ms. Laura Ginsberg
Dr. and Mrs. Lloyd W. Kitchens, Jr.
Mr. Jack W. Lively
David G. Luther, Jr. and Sally A. Schreiber
Julie L. and Richard W. Meister
Margery Riker
Louis and Sandy Sandbote
Mrs. William E. Tweed
Harland Wright

STARS

Mr. and Mrs. Merl W. Baldwin
Kathleen S. Banks, MD and
Ben L. Banks, DDS
Kathy Blandin
Kathryn J. Costello
Monique Hocking
Bobbette S. Kamholtz
Mr. and Mrs. Joe E. Johnson
Mrs. Eugene McDermott
Mr. Addison A. Newport
Mrs. W. W. Newton
Ms. Lee Pecena
Miss Brenda J. Sluyter

Thanks!

FEATURED PLAYERS

Mr. and Mrs. Jack Abernathy
Joan S. Arenstein
Ms. Delphine Blum
Anonymous
Mrs. John W. Bowyer
Mrs. William Braecklein
Mr. and Mrs. Harold M. Brierley
Dr. and Mrs. J. B. Doak
Charles and Sally Eschenfelder
Ms. Mary A. Eschrich
Mr. and Mrs. Jarvis W. Ford
Mr. Paul E. Gemmill
John and Paula Goodlett
Stephanie Hall J.D.
Jolie and Bart Humphrey
Holly Hutchinson
Marion Jones
Mr. James A. Lathim, Jr.

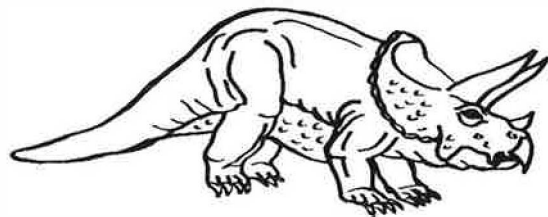
Alan and Ruth Levinstone
Yolanda Luna
Richard, Cynthia and Ann Mabry
Mr. Robert M. Martin, Jr.
Dr. and Mrs. Chester A. Mateja
Mr. and Mrs. William Harvey Miles
Dean Milkes
Jim O'Neal
Arthur J. Paone and Elaine Ericson
Dr. Laurence Perrine
Dr. and Mrs. A. M. E. Pichanick
Susan Prazuch
Mr. Darrell Royal
Mr. Richard W. Sell
Mr. Jerry L. Setliff
Mr. and Mrs. David L. Smith
Mr. and Mrs. Eugene Taper
Ms. Jo C. Wheeler

copies & more... *graphics superstore*

- High Speed Xerox Copies • Canon Color Copies •
- Binding • Laminating • Desktop Publishing •
- Printing • Typesetting • Foiling • Posters •

2924 OakLawn

522-2679



"Where great service never becomes extinct"

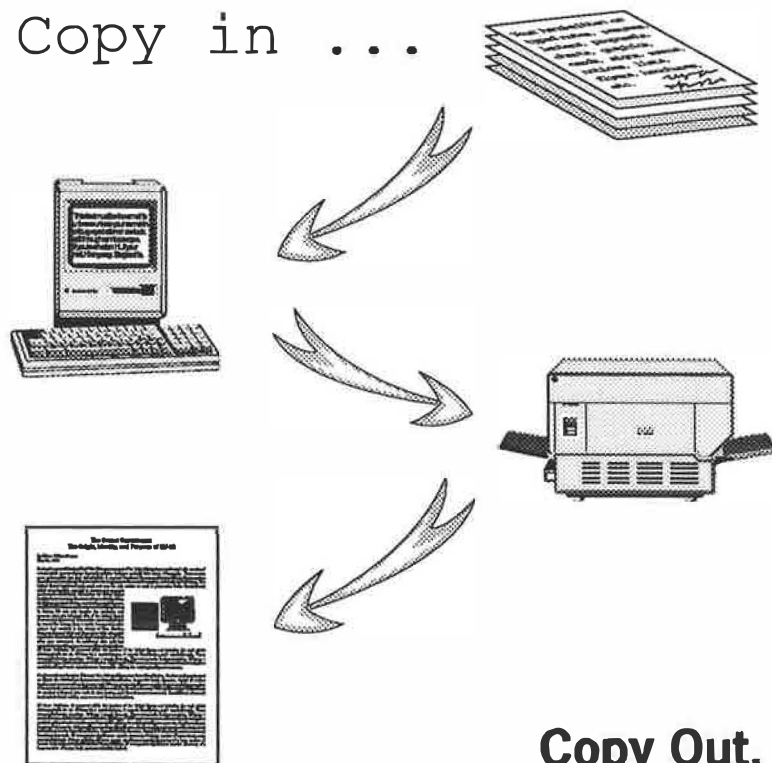
Thanks!

SUPPORTING PLAYERS

Dr. and Mrs. Maurice Adam
Mr. David Andres
Walter S. Andrews
Mary Baird
Dr. and Mrs. Vincent P. Barr
Mr. and Mrs. Jerry Beane
Mr. and Mrs. John E. Branch
Mr. and Mrs. David Brotman
Michael J. Brown
Mr. Lawrence J. Burke
Mr. and Mrs. Frank W. Chappell, Jr.
Mr and Mrs. Cyril M. Cohen
William Coleman
Thomas B. Cornell
Mr. and Mrs. Eric Cromartie
Craig Cunningham and Mary Anne Bakken
Sharon and David Cunningham
Harold J. Dickerson, MD
Mr. and Mrs. Joseph P. Ferrera
Denise M. Findysz
Mr. Philip Fischer
Mr. and Mrs. William W. Fleming
Mrs. Janet Forsythe
Anne Fowler
Rev. James Frensley
Mr. Dean M. Gandy
Ms. Marie Garrison
Mrs. Sidney E. Goldman
Mr. and Mrs. Cleve Graves
Stephen J. Griffin
Mr. and Mrs. John B. Gunn
Mrs. Kathie Hansen
Mr. and Mrs. J. Stephen Hardy
Colonel William H. Hastings
Mr. and Mrs. Charles Hayes
Robert Hearn
Stewart E. Hendrex
David Heroy
William Herrmann
Mr. and Mrs. Paul Hillier
Donald Holloway
Dr. and Mrs. William Hutton
D. S. Jones
Kathryn L. Jones
Mary C. Jones
Chrysanthia Kepler
Mr. and Mrs. Louis W. Kreditor
Don and Judy Lambert
Mr. and Mrs. John H. Lang
Mr. and Mrs. Anthony Lannie
Mr. and Mrs. Russell Leitch
Harriet Livingston, MD
Mr. Jim Mankovich
Fred and Anne Margolin
Ms. Janet L. Mariani
Dr. and Mrs. Don L. McCord

Anthony E. Meyer
Susan Harmon and Richard Meyer
Barbara Middleton
Joe Miller & Associates
Mr. W. W. Miller, III
Lee Mirowitz
Mr. and Mrs. S.P. Mitchell
Dinah Monger
Mr. and Mrs. Horace Moore
Dr. and Mrs. John E. Morris
Bob and Susan Morrison
Dan and Beverly Mountin
Dr. Richard Norgaard
Mr. and Mrs. Terence O'Connor
Mr. and Mrs. Ogg
Mr. Robert B. Patterson
Charley and Shirley Paul
Dr. and Mrs. Allen Pearlman
Henry R. Pearson
Ann Pepperd
Mr. and Mrs. Vincent W. Perini
Mrs. Roberta Pew
Terry and Judy Rahmer
Mr. and Mrs. Roger L. Rian
Mr. C.W. Rice, III
Dr. John M. Richardson
Patsy Rickett
Mr. and Mrs. David Ruyle
Becky Sands
Mr and Mrs. Paul W. Schieffer
Mr. Charles Ross Schraeder
Richard Scott
Mr. and Mrs. Truett Smith
Mr. and Mrs. Wayne Smith
Mr. and Mrs. C. James Smittle
Scott and Anne Snodgrass
Mr. and Mrs. Jack Spring
Andrea K. Steffen
Mr. and Mrs. Waldo E. Stewart
Dr. and Mrs. Marvin J. Stone
Capt. and Mrs. Stewart W. Swacker
Mr. and Mrs. Lewis Sweet
Mr. and Mrs. Irby Taylor
Larry R. Taylor
Ms. M.A.S. Taylor-Glaze
Mr. and Mrs. Robert K. Tener
Mr. and Mrs. William Underwood
Mr. and Mrs. Charles H. Vandament
Shirley Vaughan
Mr. E. D. Wahl
Mrs. H. W. Walker Jr.
Dr. and Mrs. Beck Weathers
Mr. Bill Weddle
Mr. Charles F. Werner
Dr. and Mrs. Peter Woodbridge
Ms. Ruth Anne Yeager
Rafael Zuniga

Copy in ...



Copy Out.

The BEST way to give your . . .

- ☒ Resume ☒ Presentation
- ☒ Newsletter ☒ Forms

. . . that extra something.

DESIGN ■ COPY ■ PRINT

alphagraphics®

Printshops Of The Future

4325 Alpha Rd. Dallas, Texas 75244

(214) 239-2679 FAX: (214) 239-2680

Artistic Staff

LINDA BLASE (*Lighting Design*) has designed more than 25 productions at Dallas Theater Center as well as Theatre Three's recent productions of *EASTERN STANDARD*, *JOANNA'S HUSBAND* AND *DAVID'S WIFE*, *A FUNNY THING HAPPENED ON THE WAY TO THE FORUM*, *THE TRAVELING LADY*, *THE ROAD TO MECCA*, *THE FANTASTICKS*, *NOTHING SACRED*, and *WOMAN IN MIND*. During the 88-89 season Linda designed lighting for Dallas Repertory Theatre's *BROADWAY BOUND* and *A SHAYNA MAIDEL*, Callier Theatre's *THE HAUNTING OF HILL HOUSE*, and designed lighting and sound for *TO KILL A MOCKINGBIRD* at Dallas Children's Theatre. She teaches an advanced lighting class at Dallas Arts Magnet High School.

HARLAND WRIGHT (*Scenic Design*) is a native Texan and Dallas resident who has worked in theatre in Dallas since 1964. His first design project for Theatre Three was for *THE BOYFRIEND* in the old seat-cover garage downtown. Since then he has designed, among others, *THE ROAD TO MECCA*, *ROAR OF THE GREASEPAINT*, *ANYTHING GOES*, *CELEBRATION*, *LITTLE SHOP OF HORRORS*, and *THE SEAGULL*. Mr. Wright is also well known in Dallas as an advertising and graphic designer. He has also art directed or designed numerous television commercials and industrial films. As resident art director for Mulberry Square Productions in Dallas he was production designer for the world acclaimed motion pictures *BENJI* and *FOR THE LOVE OF BENJI* and designed settings for the Benji television specials and series. Mr. Wright will also be remembered as the tallest Teddy Roosevelt in history in Theatre Three's production of *ARSENIC AND OLD LACE*. His most recent design for Theatre Three was for *A FUNNY THING HAPPENED ON THE WAY TO THE FORUM*.

DIANA FIGUEROA STORY (*Costume Design*) has worked in many different capacities in several theatres in the area. For three years her creative talents went into children's theatre. She was resident costume designer for the Creative Arts Theatre and School and guest designed the children's productions at Theatre Arlington. One of her favorite projects was to design costumes for *ROOSTERS* - the joint effort of Teatro Dallas and Addison Center Theatre. She is happy to join the creative team at Theatre Three. When not playing in the theatre, she is enjoying her three beautiful children and wonderful husband, Daie.

**Banking From
Your Point Of View.**

**NCNB
Texas**

Banking From Your Point Of View

© 1989 NCNB Texas Member FDIC Equal Housing Lender

Norma Young

NORMA YOUNG (*Founding/Artistic Director*) was born in Dallas, reared in Oak Cliff, and educated at Sul Ross State University in Alpine (which gave her its Distinguished Ex-Student award in 1982). Ms. Young's career took her to Houston and New York before she returned to Dallas to found Theatre Three in 1961. She has served as Theatre Three's Artistic Director continuously since then. In addition to her extensive directing credits, Ms. Young has played many leading roles for Theatre Three, most recently appearing as Rosanna Ainsworth Jackson in the world premiere of James Duff's *A QUARREL OF SPARROWS* and before that as Mme. St. Pe in *THE WALTZ OF THE TOREADORS*. Her guest appearances have taken her to San Antonio's Guadalupe Cultural Center in *LA CASA DE BERNARDA ALBA* and Houston's Alley Theatre in her own one woman show *THE LIFE SHE LED*. Ms. Young named Theatre Three for authors, actors, and audiences: elements she values equally in her concept of theatre. *Dallas Times Herald* has named her "Dallas' First Lady of the Theatre" and *Ultra Magazine* named her one of the five "grande dames" of Texas. In December 1988, with Jac Alder, she received the Dallas Historical Society Award for Excellence in Creative Arts. Last season, Ms. Young directed Theatre Three's productions of *NOTHING SACRED* and *THE ROAD TO MECCA*.

Jac Alder

JAC ALDER (*Executive Producer-Director & Director for LONDON ASSURANCE*) has served Theatre Three as an administrator, actor, designer, musician, director, and writer since he (with Norma Young, Robert Dracup, and Ester Ragland) co-founded the organization. Born and educated in Oklahoma, Alder earned his degree in Architecture. During the '70s, Alder was Director of Drama at the University of Texas at Arlington. He serves as advisor to DISD's Arts Magnet High School and as a member of DISD's PACE organization (Partnership of Arts, Culture, and Education). Alder has chaired the Theatre Panel of the Texas Commission on the Arts on which he has served two terms. He was on the founding Boards of the Dallas Arts Combine and the Dallas Arts Coalition. He has served as a grants evaluator for the Western Arts Foundation of Santa Fe and as a panelist for the Cultural Arts Council of Houston and the Arkansas Arts Council and is a member of the Board of Texas Non-Profit Theatres. He is host/narrator for the Dallas Symphony Orchestra performances for its youth concerts and as Artistic Advisor to Dallas' Young Audiences organization, a group that tours professional artists into the schools. For his extensive service to the theatre in Dallas, Alder was cited with a special award by the Dallas Theatre Critics Forum. In December 1988, with Norma Young, he received the Dallas Historical Society Award for Excellence in Creative Arts. In private life, he is the husband of Norma Young.

Theatre Three's Company

NORMA YOUNG, *Founding/Artistic Director*

JAC ALDER, *Executive Producer-Director*

Artistic Staff/Production

CHERYL DENSON, *Associate Producer*

LAURENCE O'DWYER, *Associate Director*

TERRY DOBSON, *Acting Production Stage Manager*

DIANA FIGUEROA STORY, *Costumer*

TRISTAN WILSON, *Technical Director*

EDDIE BURCHAM, *Carpenter*

Administration

CHRIS HARSDORFF, *Director of Administration*

KAY CRAFT JEFFREYS, *Comptroller*

GARY MEAD, *Systems Manager*

Development

MICHAEL JARZABSKI, *Acting Director*

PATRICIA LOVELL, *Associate Director*

STEPHEN COUCH, *Administrative Assistant*

Publicity/Public Relations

GARY YAWN, *Publicist*

SHANNETTE FRAZIER, *Assistant to the Publicist*

SUSAN KANDELL, *Production Photographer*

Customer Services/Sales

DAVID HADLOCK, *Director of Marketing*

MICKY SHANAHAN, *Box Office Manager*

ALDO BILLINGSLEA, *House Manager*

DANNY TAMEZ, *Group Sales Manager*

RICHARD ROLLIN, *Sales Manager*

JACK BOSSE, *Assistant Sales Manager*

Reservationists:

MICHELLE BEESON, **AMY MILLS JACKSON**, **PAUL LANDIN**,

KATIE PORTER, **BRIAN RHODES**, **DANNY TAMEZ**,

PEGGY PHARR WILSON

Marketing Representatives:

JUDY ALBAN, **MELISSA EIDSON**, **KIM GREENOUGH**,

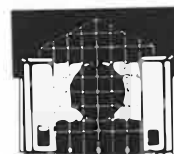
SHARI LEWIS, **MIKE REED**, **GRADY ROY**,

MICHELLE SANDERS, **KAREN WAYLAND**, **JAMES VEITCH**

JERRY THOMPSON, *Housekeeper*

Intern Staff

MARK HADLEY, *Journeyman*; **THOMAS OWEN**, *Intern*



Administration 214-871-2933

Box Office 214-871-3300

Direct Sales Center 214-871-2350

FAX 214-871-3139

Theatre Three

In The Quadrangle

2800 Routh Street

Dallas, Texas 75201



MANHATTAN LAUNDRY AND DRY CLEANERS

Family Owned and Operated for over 40 Years

**Takes The Time to Pamper
Your Silks, Satins, And Sequins**

Specializing in Gentlemen's Laundry,
Hand Finished Shirts, Ladies Blouses, and
the utmost care in the handling of fine clothes.
All this plus Custom Finishing, Alterations, and
Leather Cleaning. MANHATTAN guarantees your
satisfaction!!

PRESTON CENTER

6003 Berkshire
368-0050

THE CORNERS

8141 Walnut Hill Lane
691-4510

PRESTON FOREST

1420 Preston Forest Sq.
490-1547

WILLOW CREEK

Walnut & Central
373-4863

LOMO ALTO & LEMMON

1420 Lomo Alto
521-3961

McKINNEY & KNOX

4616 McKinney
522-4628

McKINNEY & HALL

3227 McKinney #A
871-2537

HOME DELIVERY

Main Plant
749-0621