

TAKING STEPS

by **ALAN AYCKBOURN**

Directed by **JAC ALDER**



THE REVIEWS ARE IN!

"Perfect place for a leisurely meal"
The Dallas Morning News ***

"Beautiful place for al fresco dining"
D Magazine

"The setting is inviting and the service caring"
Texas Monthly

Jonathan's Restaurant

Dinner Tuesday-Sunday, 6-11

2917 Fairmount

Dallas, Texas

(214) 954-0028



LazerGraphics Printing Copying Binding

Self Service
Lazer Typesetting
.....
Full Service
Lazer Typesetting
.....
Disk to Lazer
Typesetting
.....
Lazer Typesetting
Means Faster
Turn-around From
Job-in to Job-out



Numerous
Software Packages
(including several
exclusive to
AlphaGraphics)

And a specialist to help you at no extra charge.

alphaGraphics®

Printshops Of The Future

4325 Alpha Rd., Dallas, Texas 75244

214-239-2679

*When TIME means everything . . .
Come to Alphagraphics
Printshops of the Future, and have your
resume, flyer, letterhead or envelope
typeset, printed and in your hands
faster than you thought possible.*

Call

239-2679

*for any questions
or additional information*

Theatre Three's '88-'89 Season: A Premiere Line-up!

TAKING STEPS by ALAN AYCKBOURN

August 27 - October 8, 1988;

A QUARREL OF SPARROWS by James Duff...
October 15 - November 27, 1988;

THE FANTASTICKS by Tom Jones and Harvey Schmidt...
December 3 -31, 1988 - Sponsored by FOLEY'S;
***Tickets on Sale to Subscribers Oct. 3;
***General Public Ticket Sales begins Oct. 31

CLAPTRAP by Ken Friedman...
January 7 - February 18, 1989;

MERRILY WE ROLL ALONG by Stephen Sondheim & George Furth...
February 25 - April 8, 1989;

THE GRIMM MAGICIAN PLAYERS...Especially for young audiences...

LITTLE RED CAP & THE FISHERMAN'S WIFE Opens October 29
STAR CHILD Opens January 21, 1989;

All performances take place at THEATRE THREE, 2800 Routh (in the Quadrangle), Dallas, Texas 75201.

For reservations and ticket information, please call the Box Office at 214-871-3300 or Group Sales at 214-871-2350.

Admission to Grimm Magician Players' productions is free, but reservations are required. A donation of a sack of re-usable goods to benefit Goodwill Industries, a United Way Affiliate, is suggested.

Special discounts to Subscribers, Groups, Senior Citizens, Students. Restrictions may apply. Please contact THEATRE THREE for more information.



Theatre Three
IN THE QUADRANGLE
2800 ROUTH STREET
DALLAS, TEXAS 75201

214-871-2933 (Administration)
214-871-3300 (Box Office)
214-871-2350 (Marketing)

the production

T H E A T R E T H R E E

• 2800 Routh Street • Dallas, Texas 75201 • (214) 871-3300 •

NORMA YOUNG
Founding/Artistic Director

JAC ALDER
Executive Producer-Director
present

TAKING STEPS

by **ALAN AYCKBOURN**

Directed by **JAC ALDER**

Featuring
(in alphabetical order)

JAMES HARBOUR
LYNN MATHIS
CONNIE NELSON
TERRY VANDIVORT
WILLIAM M. WHITEHEAD
DONNA YEAGER

Associate Producer **CHARLES HOWARD**
Set Design by **JAC ALDER & CHERYL DENSON**
Costume Design by **CHRISTOPHER KOVARIK**
Lighting Design by **ROBERT McVAY**
Sound Design by **TRISTAN WILSON**
Production Manager **CHERYL DENSON**
Production Stage Manager **TERRY TITTLE HOLMAN**

First Preview: Saturday, 27 August 1988

Opening: Wednesday, 31 August 1988

Cover art by Ev Shiro, TheatreWorks, Palo Alto, California

the cast

(in order of appearance)

Elizabeth..... **CONNIE NELSON**

Mark, her brother..... **JAMES HARBOUR**

Tristram, a solicitor..... **TERRY VANDIVORT**

Roland, Elizabeth's husband.... **WILLIAM M. WHITEHEAD**

Leslie, a builder..... **LYNN MATHIS**

Kitty, Mark's fiancée..... **DONNA YEAGER**

*The play takes place in the present outside London,
on a Friday night and Saturday morning.*

There will be one fifteen-minute intermission.

IF YOU'RE NOT WEARING IT, SELL IT

You can't enjoy your jewelry if it's in your safe deposit box. Sell it for immediate cash. We purchase fine gems, diamonds and art objects. No consignment, conditions or delays. Please come in or telephone 214-358-0838 for a confidential consultation.

WALNUT COIN & JEWELRY
Exchange

3720 Walnut Hill at Marsh

Daily 10 am to 6 p.m.

Sat. 'till 3 p.m.

profiles

NORMA YOUNG (Founding/Artistic Director) was born in Dallas, reared in Oak Cliff, and educated at Sul Ross State University in Alpine (which gave her its Distinguished Ex-Student Award in 1982). Ms. Young's career took her to Houston and New York before she returned to Dallas to found Theatre Three in 1960. She has served as Theatre Three's Artistic Director continuously since then. In addition to her extensive directing credits, Ms. Young has played many leading roles for Theatre Three, most recently appearing as Mme. St. Pe. in *THE WALTZ OF THE TOREADORS*. Her recent guest appearances have taken her to San Antonio's Guadalupe Cultural Center in *LA CASA DE BERNARDA ALBA* and Houston's Alley Theatre in *THE LIFE SHE LED*. Ms. Young named Theatre Three for playwrights, productions, and audiences: elements she values equally in her concept of theatre. *DALLAS TIMES HERALD* has named her "Dallas' First Lady of the Theatre" and a recent edition of *ULTRA MAGAZINE* named her one of the five "grande dames" of Texas.

JAC ALDER (Executive Producer-Director; Director & Set Design for *TAKING STEPS*) has served Theatre Three as an administrator, actor, designer, musician, director, and writer since he (with Norma Young, Robert Dracup, and Ester Ragland) co-founded the organization. Born and educated in Oklahoma, Alder earned his degree in Architecture. During the '70s, Alder was Director of Drama at the University of Texas at Arlington. He serves as an advisor to DISD's Arts Magnet High School and as a member of DISD's PACE organization (Partnership of Arts, Culture, and Education). Alder has chaired the Theater Panel of the Texas Commission on the Arts on which he has served two terms. He was on the founding Boards of the Dallas Arts Combine and the Dallas Arts Coalition. He has served as a grants evaluator for the Western Arts Foundation of Sante Fe and (the last two years) as a panelist for the Cultural Arts Council of Houston. He serves as host/narrator for Dallas Symphony Orchestra performances for its youth concerts and as Artistic Advisor to Dallas' Young Audience organization, a group that tours professional artists into the schools. For his extensive service to the theatre in Dallas, Mr. Alder was recently given a special award by The Dallas Theater Critics Forum. In private life he is the husband of Norma Young.

CHARLES HOWARD (Associate Producer) serves Theatre Three as both a top administrator and a senior member of the artistic staff. During his more than twelve years at Theatre Three he has directed or designed eighty plus shows, including *HUNTING COCKROACHES*. His directing credits also include *THE ELEPHANT MAN*, *OTHERWISE ENGAGED*, *MORNING'S AT SEVEN*, and *FOXFIRE*. He designed *CANDIDE*, *RISE AND SHINE*, *A LUV MUSICAL*, *BENEFACTORS*, and, this season, *THE COLORED MUSEUM*. He holds degrees from Hendrix College and the University of Virginia. He has taught at Mary Washington College, Memphis State University (where he headed the BFA performance program), and Bates College.

LAURENCE O'DWYER (Associate Director) recently appeared as General St. Pe in *THE WALTZ OF THE TOREADORS*. He has directed many Theatre Three hits, including *LIGHT UP THE SKY*, *A LUV MUSICAL*, *LITTLE SHOP OF HORRORS*, *ANIMAL FARM*, *THE SHOW-OFF*, and *MA RAINEY'S BLACK BOTTOM*. In addition to his many acting and directing credits at Theatre Three, Mr. O'Dwyer created Theatre Three's Grimm Magician Players and has written and directed most of their productions, including the recent *UGLY DUCKLING*. A graduate of the Goodman Memorial Theatre in Chicago, Mr. O'Dwyer served as Chairman of the Drama Department at Bennington College.

JAMES HARBOUR (Mark), new to Theatre Three, counts *TAKING STEPS* as his third performance in a play by Alan Ayckbourn. He played Phillip in *RELATIVELY SPEAKING* at Hillberry Repertory Company in Detroit and Bernard in *SEASON'S GREETINGS* at the Wayside Theatre in Virginia. He comes to Dallas after directing *HAMLET* this summer at the Oklahoma Shakespearean Festival. James was only the third actor who received the rights to perform the one man show about Harry Truman, *GIVE 'EM HELL, HARRY*. He has received 'best actor' citations from the *DETROIT NEWS* in 1985 and the American College Theatre Festival in 1986. He holds the M.F.A. and has taught on the professional training faculties at Ohio University, Temple University, The Goodman School of Drama, and Tulane University. His professional directing assignments have included *MACBETH*, *THE COMEDY OF ERRORS*, and *ALL'S WELL THAT ENDS WELL*. James dedicates his work in the theatre to his mother and his late father in acknowledgement of their love, support, and encouragement.

LYNN MATHIS (Leslie) is a Dallas-based Texas native who received his B.A. and M.F.A. from Texas Tech and Dallas Theater Center, respectively. He has been a part of the Dallas theater scene for nearly a decade, playing a variety of roles, from Harry Berlin in *A LUV MUSICAL* to Antonio in Adrian Hall's acclaimed *TEMPEST*. Mathis also has a great interest in "The Bard," having played over twenty major roles in nine summers of Shakespeare summer stock, including Iago in *OTHELLO* and Caliban in *THE TEMPEST* for Fort Worth Shakespeare in the Park '88, Falstaff in *THE MERRY WIVES OF WINDSOR*, Buckingham in *RICHARD III*, Capulet in *ROMEO AND JULIET*, and Egeon in *THE COMEDY OF ERRORS* at the Colorado Shakespeare Festival. At the Houston Shakespeare Festival he played in *THE TEMPEST*, *KING LEAR*, *AS YOU LIKE IT*, *LOVE'S LABOURS LOST*. He is probably most familiar to Dallas theatregoers as Orin, the sadistic dentist, in the smash Theatre Three success of 1986, *LITTLE SHOP OF HORRORS*, which played four theaters and over 120 performances. This spring he was seen in *DIARY OF A SCOUNDREL* at Dallas Theater Center.



"I have always depended on the kindness of strangers."

-- Blanche DuBois, *A STREETCAR NAMED DESIRE*

"I have always depended on the kindness of friends."

-- Norma Young, founder of Theatre Three

Our new fund-raising campaign is crucial to our present and to our future. We expected a decline in government funding: it has been worse than our most pessimistic projections. We expected a decline in business support: that too has been worse than our most pessimistic projections.

Large gifts for the Arts in Dallas are increasingly rare. At Theatre Three we knew we could count on help from individuals. And many have been remarkably generous, both during our capital campaign and already in this new Friends Of Theatre Three campaign.

Our Board of Directors (who have worked and given sacrificially) need the help of all who care about Theatre Three. Please join them and your fellow playgoers in the most crucial campaign of the year: Theatre Three's search for friends!

Donors at all levels of support in this season's FRIENDS OF THEATRE THREE Campaign will be invited to vote for the "Patron's Choice Awards". These awards will be made to "Favorite Actor", "Favorite Actress" and "Favorite Show" at an end-of-season celebration attended exclusively by the season's donors.

All donors will also get a FRIEND OF THEATRE THREE button. Button-wearers get intermission refreshments FREE at all season's shows.

Additional benefits by category are...

•ANGELS support Theatre Three with a \$5,000 gift.

Permanent plaque recognition on two theatre seats
Two subscriptions for two seasons
Playwright's luncheon*
Holiday party**
Name listed in season's program
Choice of framed theatre poster
(plus button and "Patron's Choice" vote/invitation)

•BACKERS support Theatre Three with a \$2,000 gift.

Permanent plaque recognition on one theatre seat
Two complimentary subscriptions for two seasons
Playwright's luncheon*
Holiday party**
Name listed in season's program
Choice of framed theatre poster
(plus button and "Patron's Choice" vote/invitation)

•SUPERSTARS support Theatre Three with a \$1,000 gift.

Honor roll listing in downstairs lobby
Playwright's luncheon*
Holiday party**
Name listed in season's program.
Choice of framed theatre poster
(plus button and "Patron's Choice" vote/invitation)

•DIRECTORS support Theatre Three with a \$500 contribution.

Playwright's luncheon*
Holiday party**
Name listed in season's program.
Choice of framed theatre poster
(plus button and "Patron's Choice" vote/invitation)

•STARS support Theatre Three with a \$333 contribution.

Playwright's luncheon*
Holiday party**
Name listed in season's program
(plus button and "Patron's Choice" vote/invitation)

•LEADING MEN/LEADING LADIES support with a \$233 contribution.

Holiday party**
Name listed in season's program
(plus button and "Patron's Choice" vote/invitation)

•SUPPORTING PLAYERS support with a \$133 contribution.

Name listed in season's program
(plus button and "Patron's Choice" vote/invitation)

•EXTRAS support Theatre Three with a \$33 contribution.

Participation in "Patron's Choice" vote and invitation
Free beverage button

*Playwright's luncheon with James Duff, author of Broadway-bound QUARREL OF SPARROWS

**Holiday party, opening of THE FANTASTICKS.

Mail to...

FRIENDS OF THEATRE THREE • 2800 Routh • Dallas, TX 75201

YES, I'M A FRIEND OF THEATRE THREE!

Please list name as... _____

Address _____ City, State, Zip _____

Phone(s) _____ day _____ eve

☐ Check enclosed, or charge to...

☐ MasterCard
☐ VISA
☐ Discover
☐ AMEX

CATEGORY OF SUPPORT:(see above)

☐ ANGEL ☐ BACKER
☐ SUPERSTAR ☐ DIRECTOR
☐ STAR
☐ LEADING MAN/WOMAN
☐ SUPPORTING PLAYER
☐ EXTRA Amt: \$ _____

Acct# _____

Exp Date: _____

Let us check our list of firms that match employee gifts.

Please list your place(s) of employment: _____

profiles

CONNIE NELSON (*Elizabeth*) returned to Dallas after a four year absence to perform in Theatre Three's smash hit *A...MY NAME IS ALICE*. Audiences will also remember her in *SEASON'S GREETINGS*, *LITTLE SHOP OF HORRORS*, *BENEFACTORS*, *THE PHYSICIAN IN SPITE OF HIMSELF*, and *THE RUNNER STUMBLES*. In New York Ms. Nelson appeared in the 1984 One Act Play Marathon at The Ensemble Studio Theatre and also at The Encompass Theatre in *KENNEDY'S CHILDREN* with Terry Vandivort. She performed with The Acting Company and co-wrote the hit revue *ISSUE I DON'T EVEN KNOW YOU*, directed by Jack Helfner. Her regional credits include Washington's Arena Stage and a season at The Guthrie under the direction of Garland Wright and Liviu Ciulei. Ms. Nelson has worked in film, done a smattering of very tasteful commercials, and is represented by the Mary Collins Agency in Dallas. She currently co-chairs *ARTISTS FIGHTING AIDS*. When not on stage or chairing, she enjoys improvisation... "the best way I know to do this Life Thing." Ms. Nelson is delighted to be appearing again with Mr. Lynn Mathis.

TERRY VANDIVORT (*Tristram*) was last seen at Theatre Three as Alec in *INFIDELITIES*. He has also appeared in *DIVISION STREET* at Stage #1, *THE TEMPEST* and *MISALLIANCE* at Dallas Theater Center, and *LOVE'S LABOURS LOST* at the Shakespeare Festival of Dallas. While in New York City, Terry appeared with Connie Nelson in *KENNEDY'S CHILDREN* and also in *THE SCHOOL FOR SCANDAL*. Terry received his B.F.A. from the Professional Acting Curriculum at Southern Methodist University.

WILLIAM M. WHITEHEAD (*Roland*) began his theatrical career during the Eisenhower Administration with *A HATFUL OF RAIN* with the Machinukkee Players at the old Knox Street Theater and moved on to Dallas Theater Center when it was in its infancy, appearing in early productions of *THE TAMING OF THE SHREW*, *JOSHUA BEENE AND GOD* (with Burl Ives), *UNDER MILKWOOD* (directed by Burgess Meredith), and *MADWOMAN OF CHAILLOT*. He also performed El Gallo in the first Dallas production of *THE FANTASTICKS* for Bob Glenn. His many television appearances include *BEN CASEY*, *ELEVENTH HOUR*, *ALEXANDER THE GREAT*, *DR. KILDARE*, *12 O'CLOCK HIGH*, *COMBAT*, *GUNSMOKE*, and *DEATH VALLEY DAYS*. He has written episodes of *SIMON AND SIMON*, *HART TO HART*, *CRAZY LIKE A FOX*, *ANOTHER DAY*, *WHIZ KIDS*, and *HEART OF THE CITY*. His movie script for Martin Jurov called *YOU DROPPED IT, YOU PICK IT UP* is hopeful of a shooting date in Tennessee. His play *AND IF THAT MOCKINGBIRD DON'T SING* premiered in Los Angeles at Oliver Hailey's Circle Theater before playing at the Cricket Theater in Minneapolis and the Alley Theatre in Houston.

DONNA YEAGER (*Kitty*) recently starred opposite George Segal in the American premiere of Alan Ayckbourn's latest play, *HENCEFORWARD*, at the Alley Theatre in Houston and subsequently stayed on as a company member to perform the delightful Sylvia in *STEPPING OUT*. She is a graduate of Rice University and completed her postgraduate work at the Drama Studio of London, where she lived and worked as a professional actress for several years, appearing in the West End and throughout Britain in such roles as Bessie in *SOUTH PACIFIC*, Corrie in *BAREFOOT IN THE PARK*, Candy in *ONE FLEW OVER THE CUCKOO'S NEST*, and Lily in *ANNIE*. She was most recently seen on American television in the major mini-series by Arthur Hailey, *STRONG MEDICINE*, with Dick Van Dyke and Patrick Duffy. *TAKING STEPS* is her first performance at Theatre Three and she is "delighted to be a part of it."

ALAN AYCKBOURN (*Playwright*) was born in London in 1939, educated at Haileybury until the age of seventeen, and has worked in the theatre, one way and another, ever since. Acting jobs came and went in rep at Worthing, Leatherhead, Oxford, and finally with Stephen Joseph's Studio Theatre in Scarborough, Stoke-on-Trent and elsewhere. Between 1965 and 1969 he produced radio drama from the BBC Leeds Studios and since 1969 has been Director of Productions at the Library Theatre, Scarborough. Mr. Ayckbourn's plays include *THE SQUARE CAT*, *MR. WHATNOT*, *MEET MY FATHER* (presented in London in 1967 as *RELATIVELY SPEAKING*), *THE SPARROW*, *HOW THE OTHER HALF LOVES*, *ERNIE'S INCREDIBLE ILLUCINATIONS*, *TIME AND TIME AGAIN*, *ABSDUR PERSON SINGULAR*, *THE NORMAN CONQUESTS*, *ABSENT FRIENDS*, *JUST BETWEEN OURSELVES*, *CONFUSIONS*, *BEDROOM FARCE*, *SEASON'S GREETINGS*, *TAKING STEPS*, and *HENCEFORWARD*.

TERRY LITTLE HOLMAN (*Production Stage Manager*) joined Theatre Three last season with *A LUV MUSICAL*. She has been an Equity stage manager for over thirteen years and has worked for several companies, including Dallas Ballet, Theatre Memphis, Theatre Midland, and the Mansion Dinner Theatre. She also wrote the book on stage management for Texas Tech University, her alma mater. Terry is also a professional I.A.T.S.E. stagehand and since her marriage to another stagehand, Robert Holman, she has become a professional house renovator as well.

Performers and Stage Managers at THEATRE THREE work under contracts with Actors' Equity Association, the union of professional actors and stage managers in legitimate theatre.

TAKING STEPS is presented at Theatre Three by special arrangement with Samuel French, Inc., 45 W. 25th St., New York, New York.

profiles

CHERYL DENSON (*Set Design & Production Manager*) has designed sets for *CLAP YO' HANDS*, *LIGHT UP THE SKY*, *SAFETY*, *ANIMAL FARM*, *THE SHOW-OFF*, *LIES AND LEGENDS*, *MA RAINEY'S BLACK BOTTOM*, *FOXFIRE*, and *A...MY NAME IS ALICE*. She designed costumes for *A LUV MUSICAL*, *LITTLE SHOP OF HORRORS*, *ANYTHING GOES*, and *OUTSIDE WACO*. Ms. Denson is active in stage work, radio, and television; her most recent Theatre Three appearances include hit productions of *SAFETY* and *TOP GIRLS*.

CHRISTOPHER KOVARIK (*Costume Design*) has designed numerous productions at Theatre Three, including *THE SHOW-OFF*, *SAFETY*, and (most recently) *HUNTING COCKROACHES*. When not sewing, Chris' hobbies include individual synchronized swimming and toothpick sculpture. His dream is to costume an aquatic rendition of *FLOWER DRUM SONG*. A close personal friend says Chris is pleased to participate in *TAKING STEPS*.

ROBERT MEVAY (*Lighting Design*) began his second season at Theatre Three designing lights for *THE COLORED MUSEUM*. Previously, he designed lights for *TOP GIRLS*, *BENEFACTORS*, *SAFETY*, *A LUV MUSICAL*, *BLOOD KNOT*, and *CLAP YO' HANDS*. In addition to his work as Master Carpenter at Theatre Three, Robert has designed lights and scenery for Dallas' Undermain Theatre since 1985. He received a 1988 Dallas Theater Critics Forum Award for his lighting design for *GHOSTS* and *SEVENTY SCENES OF HALLOWEEN* at the Undermain.

TRISTAN WILSON (*Technical Director & Sound Design*) joined Theatre Three as Sound Designer for *LITTLE SHOP OF HORRORS* and is now in his third season as Technical Director. Before his arrival in Dallas Tristan was a resident sound designer with Missouri Repertory Theatre in Kansas City. In addition to his sound designs for many Theatre Three productions, Tristan designed the set for *TOP GIRLS* at both Greenville Avenue Theatre and Theatre Three and designed the set for Theatre Three's *BLOOD KNOT*. He is married to Dallas actress Peggy Pharr Wilson.



Hand finished and gilded picture frames, installation and conservation services.



Douglass Picture Frames
Picture Framing Since 1941
3101 McKinney Ave., Suite 105
969-5350



NOTES from the producer-director, JAC ALDER:

It's a rare playbill that has room for notes like these. I'm brimming over with topics! First, about *TAKING STEPS*. As its designer I'd like to take credit for the device of having three floors represented on a single stage level (with the resulting fun of having actors jumping oddly about and playgoers seeing simultaneous events with singular ease.) Alas, honesty compels me to admit this scheme is Mr. Ayckbourn's, a playwright who operates a theatre in England that also seats 250 and also performs "in-the-round". He cunningly worked all this out, clever skate!

And as the play's director, I'd like to take credit for all the bright line readings, physical business and insightful psychology the actors present to you. The truth is that this highly gifted company deserves most of that credit: I did the smart thing by giving them their assignments and then proved how truly smart I was by mostly keeping out of their very inventive way. The rehearsals have been a special, giddy joy I hope translates into a pleasure for each of you.

On another topic; one less joyous. I'm sorry to say Theatre Three hasn't escaped a single rigor of bad economic times. Brightening the picture is the response of our playgoers to the *Friends of Theatre Three* campaign. (Please see center spread of this program.) What our board has accomplished during these times has been remarkable and all of us on the staff and on stage are most grateful. Please join in their efforts for this campaign! All the Arts need advocacy with members of the important Park Board and with City Councilpersons as well as with state legislators. Please call me (at 871-2933) if you're willing to take a role in advocacy.

Finally, you're in for a wonderful discovery when you next come to Theatre Three to see *A QUARREL OF SPARROWS*, the new play by James Duff. We're looking forward to seeing you for this most special occasion and I want to emphasize again how deeply we appreciate your support.

the staff

TAKING STEPS TAKING STEPS TAKING STEPS

NORMA YOUNG -- Founding/Artistic Director
JAC ALDER -- Executive Producer-Director

Executive Staff

CHARLES HOWARD, Associate Producer
LAURENCE O'DWYER, Associate Director

Administration

GARY YAWN, Publicist
JANICE WEISS, Special Projects Director
COLLEEN R. JENNETT, Development Associate
GARY MEAD, Systems Manager
KAY CRAFT JEFFREYS, Controller
PAT PERNA, Bookkeeper

Production

CHERYL DENSON, Production Manager
TERRY TITTLE HOLMAN, Production Stage Manager
TRISTAN WILSON, Technical Director
ROBERT McVAY, Master Carpenter
CHRISTOPHER KOVARIK, Costumier
SUSAN KANDELL, Photographer
TERRY DOBSON, Musical Director
BARBARA MURRELL, Scenic Painter

Customer Services

ANDREW BOYER, Box Office Manager
MICKEY SHANAHAN, Box Office Supervisor
Reservationists:
LAURA BECKER;
AMY MILLS JACKSON;
PEGGY PHARR WILSON
BARBARA PURDY, Housemanager
JERRY THOMPSON, Housekeeper

Sales

ANNE GROBEN-TAYLOR, Marketing Director
BRETT DOTTER, Assistant Marketing Director
PATRICIA LOVELL, Assistant Marketing Director
Marketing Representatives:
WILLIE BOGIE; BRIAN BECK; JOHN DAVIS;
LEE DAVIS; STEPHANIE EMERY;
TRACEY HONEA; LAURA KROEMER; DAVID LANDERS;
CHRIS MEESEY; LEAH OCKELS; JOHN RADER

Interns

ELIZABETH LAINE; STEVE MILLER; SCOTT R. SCHUMANN



THEATRE THREE
IN THE QUADRANGLE
2800 ROUTH STREET
DALLAS, TEXAS 75201

214-871-2933 (Administration)
214-871-3300 (Box Office)
214-871-2350 (Marketing)

the board

Members

Mr. PAT MAYBEN, Chairman
 Mr. & Mrs. JAC ALDER
 Mr. & Mrs. JAMES K. APPLETON
 Mr. & Mrs. CLEVELAND G. CLINTON
 Mr. & Mrs. CHARLES E. COMPTON, III
 Mr. & Mrs. O. PAUL CORLEY
 Mr. CHARLES T. COTTON
 Mr. & Mrs. ALLEN DICKASON
 Ms. LAURA GINSBERG
 Ms. CYNTHIA A. GONZALEZ
 Mr. & Mrs. KENNETH J. HAIGLER
 Mr. & Mrs. THOMAS M. HOBSON
 Mr. & Mrs. CASEY HOZER
 Mr. & Mrs. EDGAR C. HUGHES
 Mr. & Mrs. DAN M. KRAUSSE
 Mr. & Mrs. BOB LISLE
 Dr. ELAINE LOCKLEY
 Mr. & Mrs. IAN MARCIL
 Mr. LES MARSHALL
 Mr. & Mrs. WILLIAM NAXON
 Mrs. JANET PETERS
 Ms. DANA RIGG
 Mrs. ELIZABETH RIVERA
 Mr. & Mrs. JOHN STRAUSS
 Mr. & Mrs. EUGENE TAPER
 Mrs. WILLIAM E. TWEED
 Mrs. RUTHMARY WHITE
 Mr. & Mrs. JAMES L. WILSON
 Mr. & Mrs. JOHN D. WISENBAKER

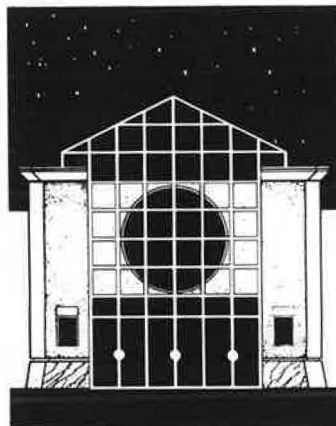
214-871-2933 Administration
 214-871-3300 Box Office
 214-871-2350 Marketing

Past Board Presidents

Mr. MICHAEL BARLERIN
 Mr. & Mrs. EDGAR C. HUGHES
 Mr. & Mrs. CLYDE MOORE
 Mr. & Mrs. MARVIN SLOMAN
 Mr. & Mrs. ANTHONY WAINWRIGHT

Founding Board Presidents

Mr. & Mrs. JOHN D. WISENBAKER



Theatre Three
 IN THE QUADRANGLE
 2800 ROUTH STREET
 DALLAS, TEXAS 75201

THANKS!

THEATRE THREE is supported, in part, by funds from the Division of Cultural Affairs, Dallas Park and Recreation Department; the Texas Commission on the Arts; The 500, Inc.; The Junior League of Dallas; TACA; The Meadows Foundation, Inc.; Atlantic Richfield Foundation; Foley's; plus numerous other corporations, foundations, and individuals.

ACKNOWLEDGEMENTS: The Quadrangle; City Warehouse Corporation; Manhattan Cleaners; Current Flowers; Lee Data Mail; The Stoneleigh Hotel; Jonathan's Restaurant; Douglas Picture Frames; PIP Printing; Chaslain & Company; Colfax & Tea Trading Company; Dallas Arts Combine; STAGE Alpha Graphics; Lipton Tea; Massimo di Milano; Dream Cafe; J. Pepe's; American Printers; Texas Instruments (Ed Groben & Candy York); Friio-Lay; Susan Kandell Photography; Aurling and Associates; Yellow Rose Imports.

Theatre Three applauds all those whose support makes our work possible. Though space does not permit individual naming, we offer our sincere thanks to our thousands of Season Subscribers and BRAVO Campaign Contributors.

NO SMOKING IN LOBBY OR STAGEHOUSE BY ORDINANCE OF THE CITY OF DALLAS

*Smoking Lounge & Restrooms Downstairs
 Accessible Restroom located next to Box Office*

NO CAMERAS OR RECORDERS OR BEEPERS OR BEEPING WATCHES, PLEASE!

The photographing, video recording, or sound recording of any performance without the written permission of the Management is prohibited by law. Even bringing in such equipment makes the violator liable for money damages. The Box Office Staff will happily hold such equipment for safekeeping.

As a courtesy to prompt playgoers and for safety reasons, THEATRE THREE does not seat latecomers until intermission. For like reasons, playgoers leaving their seats during the performance will not be readmitted until act-end. Children under 5 years of age will not be admitted to THEATRE THREE's mainstage productions. We invite you to begin your child's playgoing experience with the excellent productions of our GRIMM MAGICIAN PLAYERS.

Maple Terrace

Uniquely spacious efficiencies, one, two and three-bedroom apartments offering a magnificent view of Dallas. Located in prestigious Turtle Creek. Maple Terrace's Highrise amenities include a heated swimming pool, tennis court, covered parking, controlled access entry and on-premise security. Room service available by Ewald's at the Stoneleigh. Efficiencies start at \$400. One bedrooms start at \$800. ALL BILLS PAID.

3001 Maple Ave. Dallas, Texas
 871-1114



Before the theater...

enjoy a great performance at the Stoneleigh Hotel.

Before the curtain call savor exquisitely prepared cuisine in Ewald's at the Stoneleigh.

EWALD'S
 AT THE STONELEIGH

After the curtain closes enjoy a grand finale of delightful desserts and after dinner drinks in the Lion's Den Piano Bar.



For dinner reservations:
 214-871-2523
 2927 Maple Avenue
 Dallas, Texas 214-871-7111



MANHATTAN LAUNDRY AND DRY CLEANERS

Family Owned and Operated for over 40 Years

**Takes The Time to Pamper
Your Silks, Satins, And Sequins**

Specializing in Gentlemen's Laundry,
Hand Finished Shirts, Ladies Blouses, and
the utmost care in the handling of fine clothes.
All this plus Custom Finishing, Alterations, and
Leather Cleaning. MANHATTAN guarantees your
satisfaction!!

PRESTON CENTER

6003 Berkshire
368-0050

THE CORNERS

8141 Walnut Hill Lane
691-4510

PRESTON FOREST

1420 Preston Forest Sq.
490-1547

WILLOW CREEK

Walnut & Central
373-4863

LOMO ALTO & LEMMON

1420 Lomo Alto
521-3961

McKINNEY & KNOX

4616 McKinney
522-4628

McKINNEY & HALL

3227 McKinney #A
871-2537

HOME DELIVERY

Main Plant
749-0621