

A SEASON OF CELEBRATION!

THEATRE
THREE
30
THIRTIETH
ANNIVERSARY
SEASON

THE
HEIDI CHRONICLES
by WENDY WASSERSTEIN

The Dallas Morning News
1991-92 SEASON SPONSOR

The Owners of Quadrangle Grille
Invite You to Visit Their New Italian Restaurant



MANGIA

Italia

R I S T O R A N T E

In Lakewood - Next to the Lakewood Theater
6334 La Vista Dallas, Texas 75214 (214) 821-5328



Hey! It's too early to go home, yet!
Come discuss the Show over Italian
Eats, Snappy Hot Pizza or Custom
Coffee Drinks and Dessert on the
Patio. You'll probably know some People!

Just 3 blocks away...
Walk over or catch
the northbound
Trolley Car!

Serving Food 'til 1am,
Late Night Silliness
'til 2am Every Nite!

Joey's
Sformato's®



No Dress Code, Reservations
or Serious "Attitudes"

3232 McKinney Ave.
at Hall St. • 754-0380

Tons o' Free Parking if you can find it!



TONIGHT WAS MADE POSSIBLE BY YEARS OF SOLO PERFORMANCES.

Long, lonely hours.

Broken strings. Sour notes.

It takes a lot of hard work to play.

Yet, when the curtain goes up,
all we're aware of is beautiful music.

At ARCO, we know how
much energy it takes to excel.

We applaud all those
who make performing an art.

And everyone who works to
reach the high notes.



ARCO Oil and Gas Company



THEATRE THREE

IN THE QUADRANGLE
2800 ROUTH STREET
DALLAS, TEXAS

NORMA YOUNG
FOUNDING/ARTISTIC DIRECTOR
JAC ALDER
EXECUTIVE PRODUCER-DIRECTOR

BOX OFFICE
214-871-3300
ADMINISTRATION
214-871-2933
DIRECT SALES CENTER
214-871-2350
FAX
214-871-3139

The Dallas Morning News

1991-92 SEASON SPONSOR

PLAYING TEXAS FOR 30 YEARS

**Subscribe
Now!**

Call 871-3300



by **WENDY WASSERSTEIN**

Funny, touching and written with rare grace and sensitivity, **THE HEIDI CHRONICLES** is a moving examination of the progress of a generation from the socially and politically activist sixties to the success-oriented eighties — a time during which the status of American women underwent profound change.

First Preview: Saturday, 19 October 1991

Premiere Friday: 25 October 1991



30 Years Young!

When Norma Young returned to Dallas in 1960 she remembers that she "had no assets, just ambition." She had a vision of a professional theatre employing professional actors in classical, contemporary and musical theatre. In its first season, senior critic for *The Dallas Morning News* John Rosenfield praised the troupe's accomplishments, saying its work showed "the best acting Dallas has seen in years and years and still more years."

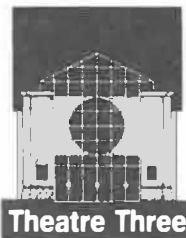
Seven shows were produced in the downtown Sheraton before the "stubborn, torch-bearing group" moved to an unused seat cover garage at 2211 Main Street. Theatre Three was to perform for a growing and loyal audience in that simple 125 seat arena theatre for the next eight years. "Not since Margo Jones," wrote Bob Porter, then with the *Denton Record-Chronicle*, "have we seen such consistently rewarding and promising fare in North Texas."

Theatre Three is so named, by Ms. Young, for the three components of theatre: the artist, the playwright, and the audience. "For better or worse," wrote *Dallas Times Herald* critic Dan Hulbert in 1986, "it is the theatre that never set itself above the concerns of its audience. With one of the country's few remaining in-the-round formats — made famous by Margo Jones in her Fair Park theatre of the late '40s — Theatre Three has never asked to be regarded as a temple of art, but rather as a community hall in the best sense, a place where ideas are shared with candor and warmth."

By 1969, Theatre Three's image had changed from the "beatniks on Main Street" as its artists used to be called, to a mainstream theatre with a well-rounded repertoire. Its fledgling Board of Directors sponsored gala events that underwrote the move to a new 241 seat home in The Quadrangle.

Among the young artists who worked on its stage in the '60s and '70s were Ronnie Claire Edwards, Morgan Fairchild, Beth Henley and James Duff. Productions such as *Purlie Victorious* and *In White America* began a tradition of serving Black audiences when they were all but ignored by other Dallas arts groups. Theatre Three has been Dallas' most committed supporter of emerging writers and was the first theatre to return Eugene O'Neill to Dallas stages after a twenty-five year lapse, and the first to do Edward Albee, Harold Pinter and August Wilson plays in Dallas. In 1973, Theatre Three became the first Dallas theatre to negotiate a contract with Actors' Equity Association for year-round performances. Today, it presents more than 375 performances annually and has a subscription audience of 6,000 loyal patrons. In 1986, Theatre Three negotiated the purchase of its Quadrangle home in celebration of its twenty-fifth anniversary. Today, it remains the only theatre in Dallas to own its own building.

Norma Young and Jac Alder have steadfastly followed the theatre's mission to produce theatrical works, be they dramatic, comedic, classic, or musical, that explore the universal aspects of the human experience, create a metaphor the audience can poetically embrace and foster the elements of social justice: understanding, compassion and communication.



THEATRE THREE

NORMA YOUNG
Founding/Artistic Director

JAC ALDER
Executive Producer-Director

PRESENTS

CHERYL NORRIS
MARY ANNA AUSTIN
SCOTT EVERHART
LINDA FORD
JIM JORGENSEN
JOHNA SPRIZZO
PAUL TIGUE
PEGGY PHARR WILSON

Starring In

THE HEIDI CHRONICLES

by WENDY WASSERSTEIN

Directed by
CHERYL DENSON

Scenic Design by
WADE J. GIAMPA

Costume Design by
DIANA FIGUEROA STORY

Lighting Design by
LINDA BLASE

Sound Design & Technical Director
TRISTAN WILSON

Wig & Hair Design by
RUSSELL LATHAM

Production Stage Manager
LAURENCE O'DWYER*

Production Assistant
NANCY LOSEY**

Assistant to the Director
PEGGY KRUGER

THEATRE THREE's 30th Anniversary production of THE HEIDI CHRONICLES is presented by special arrangement with Dramatists Play Service, Inc.

Playwrights Horizons, New York City, first produced THE HEIDI CHRONICLES Off Broadway in 1988 following a workshop production by the Seattle Repertory Theatre.

Produced on Broadway by The Shubert Organization, Suntory International Corp. and James Walsh in association with Playwrights Horizons.

THE HEIDI CHRONICLES

Cast Of Characters

Heidi Holland.....CHERYL NORRIS*
 Susan Johnston.....MARY ANNA AUSTIN*
 Peter Patrone.....SCOTT EVERHART*
 Scoop Rosenbaum.....JIM JORGENSEN*
 Chris Boxer, Mark, Waiter, Ray.....PAUL TIGUE**
 Fran, Debbie, Lisa.....JOHNA SPRIZZO*
 Jill, Molly, Betsy, April.....PEGGY PHARR WILSON*
 Becky, Clara, Denise.....LINDA FORD**

ACT ONE

Prologue: A lecture hall, New York, 1989
 Scene 1: Chicago, 1965
 Scene 2: Manchester, New Hampshire, 1968
 Scene 3: Ann Arbor, Michigan, 1970
 Scene 4: Chicago, 1974
 Scene 5: New York, 1977

-Intermission Of Fifteen Minutes-

ACT TWO

All scenes take place in New York.
 Prologue: A lecture hall, 1989
 Scene 1: An apartment, 1980
 Scene 2: A TV studio, 1982
 Scene 3: A restaurant, 1984
 Scene 4: The Plaza Hotel, 1986
 Scene 5: A pediatrics ward, 1987
 Scene 6: An apartment, 1989

THEATRE THREE operates under an agreement with Actors' Equity Association (AEA), the Union of Professional Actors and Stage Managers in the United States. *Member, AEA. **Membership Candidate, AEA.

WENDY WASSERSTEIN (*Playwright for "The Heidi Chronicles"*) was born in New York City and graduated from Mount Holyoke and the Yale School of Drama. Her plays include *Any Woman Can't*, *Montpelier Pa-Zazz*, *Tender Offer*, *When Dinah Shore Ruled The Earth* (co-authored with Christopher Durang), *Uncommon Women And Others*, and *Isn't It Romantic*. For PBS television, she adapted *Uncommon Women* and John Cheever's *The Sorrows Of Gin* for the Great Performances series, as well as authoring *Drive, She Said* for the comedy series, *Trying Times*. She also wrote a screenplay for *Isn't It Romantic* and co-authored with Christopher Durang the screenplay *The House Of Husband*s. She wrote *Maids In America* for Steven Spielberg and adapted Stephen McCauley's novel, *The Object Of My Affection* for Paramount. She is the author of numerous articles for *The New York Times*' Arts and Leisure section, *New York Woman*, *Mademoiselle*, and many others. Miss Wasserstein is a recipient of a 1983 Guggenheim Fellowship and a 1984 NEA grant for playwriting. Her Tony Award and Pulitzer Prize-winning play, *The Heidi Chronicles*, was produced at Playwrights Horizons before it opened on Broadway at the Plymouth Theatre on March 9, 1989. She has recently adapted *The Heidi Chronicles* for the screen. And she has also just received *New York Woman* magazine's "Life of the City" award.

CHERYL DENSON (*Director for "The Heidi Chronicles" and Associate Producer*) directed last season's productions of *Eastern Standard* and *Accomplice*. She made her Theatre Three directing debut with the 1988 production of *The Fantasticks* and directed the Jones/Schmidt musical for the second time in 1989. Dallas audiences have seen her directing work in *Broadway Bound* and *Sherlock's Last Case*, both at Dallas Repertory Theatre, *Pulp And Circumstance* at the Crescent Theatre, and *The Traveling Lady* at Theatre Three. Cheryl has designed sets and/or costumes for numerous Theatre Three productions, including the just-completed *Heartbeats*. Her acting appearances include such Theatre Three hits as *Safety* and *Top Girls*. A graduate of Baylor University and Trinity University and a native of Corsicana, Cheryl joined Theatre Three's staff in the autumn of 1983.



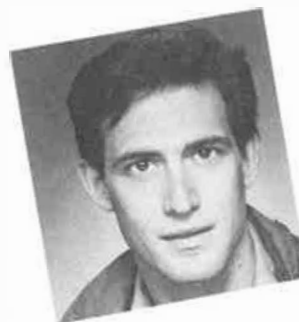
JCPENNEY PROUDLY SUPPORTS
THEATRE THREE

JCPenney
Fashion comes to life



Mary Anna Austin

MARY ANNA AUSTIN (*Susan Johnston*) received the 1991 Dallas Theatre Critics Forum Award for Outstanding Actress for her performance as Rachael in *Reckless* at the Open Stage. She began her professional acting career at the age of twelve at Dallas Theater Center, majored in theatre at Trinity University, and won a scholarship to the American Conservatory Theatre in San Francisco before helping to found New Arts Theatre where she appeared in *Private Lives*, *Hot L Baltimore*, *The Wild Duck*, and *A Coupla White Chicks Sitting Around Talking*. Most recently, she played Sue Bayliss in Dallas Theater Center's *All My Sons*. Her past credits include some fifty professional productions, including *Power Lines* at the Odyssey Theatre in Los Angeles and *An Evening With Tennessee Williams* at the American Conservatory Theatre. In addition to numerous film and television credits, she directed the smash hit *Frankie And Johnny In The Clair De Lune* at the Open Stage and founded *Noon Preview*, an actors' showcase now in its eighth year at S.T.A.G.E. Mary Anna also serves on the Board of Directors of the USA Film Festival and the Advisory Boards of the Open Stage and the Booker T. Washington High School for the Visual and Performing Arts.*



Scott Everhart

SCOTT EVERHART (*Peter Patrone*) was previously seen at Theatre Three as the Prince in *Infidelities* and Toby Wells in *Second Threshold*. Most recently he was a cast member of *Closer Than Ever* at Dallas Repertory Theatre. Other local credits include Raul in *Extremities* at New Arts Theatre, Mark Dolson in *Mass Appeal* at Stage #1, and Frank Shepard in *Merrily We Roll Along* at Stage West. At Dallas Theater Center Scott performed roles in *The Miser*, *Misalliance*, *The Real Thing*, and *A Christmas Carol*. In Los Angeles he was a cast member of *Bittersuite* at the Back Alley Theater and performed Georg in *She Loves Me* at the Lawrence Welk Theatre. On television he was seen on *All My Children*, *The Young And The Restless*, and *Peyton Place*, *The Next Generation*. Scott is a graduate of the acting program at Southern Methodist University.*

Great Books. Great Selection.

Come to Half Price Books today for the very best selection of new and used books, LPs and cassettes in town. All at incredibly low prices.

HALF PRICE BOOKS RECORDS MAGAZINES

We buy anything printed or recorded daily.

November 22, 23, 24



RUMMAGE SALE EXTRAVAGANZA

Last Season's Rummage Sale was an unprecedented success. And due to the tremendous response, we are pleased to announce this year's sale will be even bigger! Treasures from our scenery and prop warehouse, linery from the costume shop, one of a kind publicity photos, autographed posters, plus the wonderful donations of our subscribers and friends will guarantee a shopper's paradise for one and all.

For a small \$10 donation you can gain admission to our exclusive EVENING PREVIEW SALE and be assured of first access to the "cream of the crop."

Too much accumulated treasure of your own? WE NEED YOUR HELP! Tax-deductible contributions of gently used items can restore order to your garage and make a profitable addition to our unique sale. Call the Administrative Office at 214-871-2933 to arrange for drop-off or pick-up.



Linda Ford

LINDA FORD (*Becky, Clara, Denise*) is delighted to join the cast of *The Heidi Chronicles* for her first performance at Theatre Three. She has worked in area theatres in such roles as Jenny Brown in *Love Of A Pig* at Pegasus Theatre, Amy Lee in *Laundry And Bourbon* for Hard City Theatre, and the role of the Princess, which she originated for the premiere of *Femme Tales* at S.T.A.G.E.'s '90 Playwrights Festival. Her New York credits include Mary in *Vanities* and Natalia in *The Marriage Proposal*. Aside from theatre, Linda works in commercials and industrials and is represented by the Joy Wyse Agency. She received a B.F.A. in Drama from the University of Oklahoma and was recently appointed Information Services Director for S.T.A.G.E. (Society for Theatrical Artists' Guidance and Enhancement).**



Jim Jorgensen

JIM JORGENSEN (*Scoop Rosenbaum*) is making his Theatre Three debut in *The Heidi Chronicles*. He has just finished playing Petruchio in *The Taming Of The Shrew* at San Antonio Shakespeare Festival. Some of his previous roles include Sherlock in *Sherlock's Last Case* at Dallas Repertory Theatre and Simon in *Sisterly Feelings* at Stage West in Fort Worth. He has also performed at Houston's Alley Theatre, Dallas Children's Theatre, Utah Shakespeare Festival, Oberlin Repertory Theatre, Idaho Repertory Theatre, Pioneer Square Theatre in Seattle, and Seattle Children's Theatre. Jim is a graduate of Southern Methodist University's M.F.A. acting program*

Support for the Arts
starts in your
own backyard.

THE HAMPSTEAD GROUP

MONTEREY
MANAGEMENT, INC.



Herbert Webb

I N C O R P O R A T E D

SHIPPING ROOM SUPPLIES AND

INDUSTRIAL MARKING EQUIPMENT

"WE HELP COMPANIES MAKE THEIR MARK"

214-630-7191



Cheryl Norris

CHERYL NORRIS (*Heidi Holland*) was seen at Theatre Three as Phoebe in last season's *Eastern Standard*, for which she was voted a Patron's Favorite Award for Favorite Actress in a Theatre Three debut performance. Most recently she appeared as Cassie in *Rumors* at Dallas Repertory Theatre. Her other roles in the Dallas/Fort Worth area include Cathy in *Tales Of The Lost Formicans* at Moving Target Theatre, Fanny in *On The Verge* at Stage West, Oma Lynn in *Little Lulu In A Tight Orange Dress*, also at Stage West, and Betsy in *Octette Bridge Club* at Dallas Repertory Theatre. Cheryl also appears in commercials, industrial films, and print ads. She is dedicating her performance in *The Heidi Chronicles* to one of her first acting teachers, Rod Wilson.*



Johna Sprizzo

JOHNA SPRIZZO (*Fran, Debbie, Lisa*) makes her debut at Theatre Three in *The Heidi Chronicles*. Her other theatre credits include *Our Lady Of The Tortilla*, *Mrs. California*, *Dames At Sea*, *Man Of La Mancha*, *Noises Off*, *She Loves Me*, *A...My Name Is Alice*, *Gemini*, *Teen Angel*, *Chicago*, *The Mighty Methusaleh*, and many others. She has worked at Stage West in Fort Worth, Dallas Repertory Theatre, New Arts Theatre, and New Stage in Jackson, Mississippi. Johna holds a B.F.A. from the Boston Conservatory and has studied at Julliard.*



Paul Tighe

PAUL TIGHE (*Chris Boxer, Mark, Waiter, Ray*) is making his first appearance at Theatre Three in *The Heidi Chronicles*. His previous Dallas roles include *The Ugly Duckling* in *The Ugly Duckling* at Dallas Theater Center, *Aguecheek* in Stage West's production of *Twelfth Night*, and the Provost in *Measure For Measure* at Deep Ellum Theatre Garage. His other roles include *Cassius* in *Julius Caesar*, *Banquo* in *MacBeth*, *Quince* and *Puck* in *A Midsummer Night's Dream*, *Howard Wright* in *Packard*, and *Pyotro* in *Memoirs Of A Russian Lady*, all at Walden Theatre in Louisville, Kentucky, and the *Beadle* in *Sweeney Todd*, *Gladhand* in *West Side Story*, and *Chorus/Heavy* in *Evita*. His film credits include several industrials for Kentucky Fried Chicken and *One Man's Vision Of The City*, which begins filming this October. Paul has a degree in International Affairs from the School of Foreign Service at Georgetown University and is a contributing author to *Choices*, Dramatic Publishing Company.**

**DEAN.
STEPHAN.
AND NOW,
MICHEL.**

Bouquets to Chef Michel Platz, for creating spirited French Alsatian fare featuring subtlety and flowers.

And for achieving acclaim as one of Dallas' top chefs.

Michel's signature edible flowers grace and embellish your dining experience.

Like the critics, you'll discover a night (and a chef) to remember.

L'Entrecôte

Leews Anatole Hotel
2201 Stemmons Freeway
Dallas, Texas 75207
Complimentary valet parking
Restaurant reservations 761-7479





Peggy Pharr Wilson

PEGGY PHARR WILSON (*Jill, Molly, Betsy, April*) Dallas audiences will remember Peggy from *Six Women With Brain Death*, which she also co-wrote. She has been seen at the Plaza Theatre as Ramona in *Della's Diner*, at Addison Centre Theatre as Lois in *More Fun Than Bowling*, and at Dallas Theater Center as Mrs. Partlett/Sister-In-Law in *A Christmas Carol*. Peggy has also appeared in *Six Women With Brain Death* in Chicago and Kansas City, in *Candide* and *Sweeney Todd* at Lyric Opera of Kansas City, and in *Harbledown* and *A Christmas Carol* at Missouri Repertory Theatre. Her biggest claim to fame is appearing at a dinner theatre with Mary Ann from *Gilligan's Island* (the play's title has been blocked from her memory forever). Peggy treasures the three years and fifteen roles at Creede Repertory Theatre in Colorado where she began taking on her favorite role, Mrs. Tristan Wilson.*

Banking From Your Point Of View.

NCNB
Texas

Banking From Your Point Of View

© 1989 NCNB Texas Member FDIC Equal Housing Lender

NO LATE SEATING!!!
NO CAMERAS, RECORDERS, OR BEEPERS!
NO SMOKING IN LOBBY OR STAGEHOUSE BY ORDINANCE OF THE CITY OF DALLAS!
Smoking Lounge and Restrooms Downstairs
Accessible Restroom located next to Box Office
Special Equipment for the Hearing Impaired available from the House Manager.

PEGGY KRUGER (*Assistant to the Director*) returns to Theatre Three after a ten year absence, during which time she was employed for three seasons at Dallas Theater Center, worked as the Production Stage Manager at Addison Centre Theatre for nearly two seasons, finished a degree in theater from the University of Texas at Dallas, and most recently worked with her brother's production company (Envision Productions and Designs) as a designer and production coordinator/manager. It's great to be back "home"!!!*

LINDA BLASE (*Lighting Design*) has designed Theatre Three's productions of *Heartbeats*, *Waiting For Godot*, *Stringbean*, *Dress Up*, *Weill Women*, *Joe Turner's Come And Gone*, *Accomplice*, *London Assurance*, *Eastern Standard*, *Joanna's Husband And David's Wife*, *A Funny Thing Happened On The Way To The Forum*, *The Traveling Lady*, *The Road To Mecca*, *The Fantasticks*, *Nothing Sacred*, and *Woman In Mind*, as well as more than 25 productions at Dallas Theater Center, including last spring's hit *Other People's Money*. She is also a recipient of the 1991 Dallas Theater Critics Forum Award.

WADE J. GIAMPA (*Scenic Design*) has designed Theatre Three's recent productions of *Accomplice*, *Eastern Standard*, and *Nothing Sacred*. He has worked for Peter Wolf Partnership for over five years. Before that he was with ABC television in New York City. Wade designed *Della's Diner*, *American Jukebox*, and others for the Plaza Theatre, and Dallas Repertory Theatre's production of *Ain't Misbehavin'*. He is happy to be once again working at Theatre Three.

DIANA FIGUEROA STORY (*Costume Design*) joined Theatre Three's staff last season and recently designed the costumes for the theatre's premiere of *Stringbean*. She has worked in many different capacities at several theatres in the area. For three years her creative talents went into children's theatre. She was resident costume designer for the Creative Arts Theatre and School and guest designed the children's productions at Theatre Arlington. One of her favorite projects was the costume design for *Roosters*, a joint effort of Teatro Dallas and Addison Centre Theatre. Diana has a wonderful husband, Dale, and three beautiful children.

TRISTAN WILSON (*Technical Director and Sound Design*) is in his sixth season at Theatre Three, during which time he has built the sets and designed the sound for all of the theatre's productions. Over his ten year career he has designed and built scenery for theatre, television, and industrial productions. His most recent set design was for *His Unconquerable Enemy* at Dallas Theater Center. As a sound designer he has worked in recording studios, radio stations, concert halls, and more than two dozen theatres across the midwest. Some of his favorite projects include *Nicholas Nickelby* at Missouri Repertory Theatre, *Little Shop Of Horrors* at Theatre Three, and *Six Women With Brain Death* at Moving Target Theatre. He met his wife, actress Peggy Pharr Wilson, at Creede Repertory Theatre in Colorado, and they have continued their summer romance for nine years.

RUSSELL LATHAM (*Wig and Hair Design*) *The Heidi Chronicles* marks this native Wacoan's third show with Theatre Three. Prior to joining the theatre with *Stringbean* starring Leslie Uggams, Russ wigged *Big River* and *A Family Affair* at the Walnut Street Theatre in Philadelphia following an eight year stint in Los Angeles where he designed the costumes and did the special hairstyles for a quasi 60's style, anti-drug video at Universal Studios (*Don't Do Drugs!*, still unreleased) and appeared on television in *Superior Court* and on stage with Mabel King in *Claim It*, which was the last show to grace the old Variety Arts Theatre. Russ attended Baylor University, the American Academy of Dramatic Arts, and the American Conservatory Theatre.

LAURENCE O'DWYER (*Associate Director*) has charmed Theatre Three's audiences for 29 of the theatre's thirty years. His most recent appearances include *Waiting For Godot*, *Joe Turner's Come And Gone*, *London Assurance*, and *A Funny Thing Happened On The Way To The Forum*. For the 1989 Season, he received the Dallas Theater Critics Forum Award for his appearances in Theatre Three's *Nothing Sacred* and Dallas Theater Center's *Temptation*. His many Theatre Three appearances include *Woman In Mind*, *A Quarrel Of Sparrows*, and *The Waltz Of The Toreadors*. Larry has directed such Theatre Three hits as *Ma Rainey's Black Bottom*, *Little Shop Of Horrors*, *Animal Farm*, *The Show-Off*, *A Luv Musical*, and *Light Up The Sky* (which was cited as an outstanding production by the Dallas Theater Critics Forum). Larry created Theatre Three's Grimm Magician Players and has written and directed most of the children's productions at the theatre as well as the recent *Tumbleweed Theatricals*. A graduate of Goodman Memorial Theatre in Chicago, Larry has served as chairman of the Drama Department at Bennington College.*

Theatre Three's Company

NORMA YOUNG, *Founding/Artistic Director*

JAC ALDER, *Executive Producer-Director*

Artistic Staff/Production

CHERYL DENSON, *Associate Producer*

LAURENCE O'DWYER, *Associate Director*

TERRY DOBSON, *Musical Director, Assistant to Mr. Alder*

TRISTAN WILSON, *Technical Director*

VERN MCKINNEY, *Master Carpenter*

LINDA BLASE, *Lighting Designer, Production Photographer*

DIANA FIGUEROA STORY, *Costumiere*

SHAUNI YOUNG, *Costume Assistant*

RUSSELL LATHAM, *Wigmaster*

ROBIN DAFFINEE, *Ventilated Fronts*

PEGGY KRUGER, *Assistant to the Director for THE HEIDI CHRONICLES*

Administration

CHRIS HARSDORFF, *Director of Administration*

MARK HADLEY, *Comptroller*

PAT PERNA, *Bookkeeper*

COAK POE, *Systems Manager*

PAMELA MOORE, *Outreach Coordinator*

CLINTON SMITH, *Director of Development*

Publicity/Public Relations

GARY YAWN, *Publicist*

Customer Services/Sales

DAVID HADLOCK, *Director of Marketing*

NANCY WARE, *Box Office Manager*

RICHARD ROLLIN, *Sales Manager*

CATHERINE CRANDELL, *Assistant Sales Manager*

PETER DOUGLAS, *House Manager*

CAROL GRIMES, *House Manager*

Reservationists:

AMY MILLS JACKSON, KEVIN CURRY,

RONNY FRASHER, JOSEPH KAST, VIRGINIA LYNN

Marketing Representatives:

STACEY ARTON, JUDY ALBAN, KIRK CARRINGTON,

LYNDA DAULEY, ALAN EASTERLING, GWEN FINE,

DAWN GLANTZ, BOB INMAN, MARK ISOM,

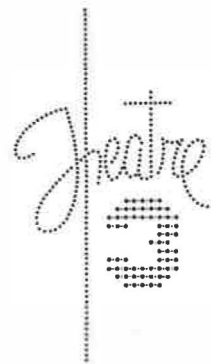
JOHN MCHUGH, PAM MUELLER, SARAH PRIDY,

BRADFORD SMITH, MAGGIE ELDRED

Intern Staff

J. KYLE HANNAH, *Journeyman*

NANCY LOSEY, *Intern*



ACKNOWLEDGEMENTS: The Quadrangle; The Hampstead Group; City Warehouse Corporation; Manhattan Cleaners; ArtsMark; Lee Data Mall; Perrier; Ford Motor Company; Quadrangle Grille; Tarrant Printing; Burger King; Harland Wright; Half Price Books, Records, Magazines; Allen Townsend, Dallas Museum of Art; Dr. Eleanor Tufts, Aileen Kaufman, Lawrence S. Schwartz, Jake and Nancy Hamon Art Library, Southern Methodist University; Lisa Wren, Steve Hapgood, Public Relations, Baylor University Medical Center; Rita Tanes, Tammi Wharton, Lynn Cleaver, Baylor Pediatric Unit; Robert Eason, Dallas Public Library; Jo DeVecchio, Paula Phipps, Kimbell Art Museum; Chicago Art Institute; Kirk Cooter, Cooter's Village Camera; Motherhood Maternity Shop; Tiffany and Company; JoAnn Stallings, Oak Lawn United Methodist Church; Scott Smith, Dallas Theater Center; Barbara Koerble, University of Texas at Arlington; Uncommon Market; FAO Schwartz; Paul Porter; Eugene Optical; plus many other wonderful individuals, businesses, and organizations. THANKS!

We've impressed people who think they've seen everything.

Ellen.
She's lucky. Only half
of the loans she
approved last year
went bad. Her bank's
name has changed
twice in six months,
and she's had three
last names in five years. She's heard
every line in the book. But that doesn't
mean she can't be
bowled over by the
Grilled Seafood Skewer
at Quadrangle Grille.



QUADRANGLE GRILLE

The Quadrangle • 2800 Routh St.
Howell St. Entrance • Dallas • 979-9022

*We're two blocks from
the Routh St. trolley stop.*

Theatre Three's Board Of Directors

Members

CLEVE & RITA CLINTON, *Chair*
Mr. & Mrs. JAC ALDER
Mr. & Mrs. GREG BALLEW
Dr. & Mrs. H.D. BELL
Ms. NELL BUTLER
Ms. SALLY BRANCH
Mr. & Mrs. CHRIS CASEY (*The 500, Inc.*)
Mr. & Mrs. O. PAUL CORLEY
Mr. & Mrs. JOHN FULLINGIM
Mr. & Mrs. KENNETH J. HAIGLER
Ms. HOLLY HAMMOND
JACKSON & DANA HARKEY
Mr. CHRIS HARSDORFF
Mr. & Mrs. CASEY HOZER
Mr. KENNETH H. HUGHES
BRUCE & DARLENE JONES
Mr. & Mrs. DAVE LAMBERT
BOB & JODI LISLE
Mr. & Mrs. JIM MORRIS
Mr. ERIC McHENRY
Mr. & Mrs. WILLIAM NAXON
Mrs. IDELLE RABIN (*Office of Cultural Affairs*)
Mrs. ELIZABETH RIVERA
Ms. KAREN W. ROBINSON
ROBERT & KATHY SHERROD
Mr. THOMAS C. STARK
Mr. & Mrs. JOHN STRAUSS
Mr. STEPHEN TACKE
Mrs. WILLIAM E. TWEED
Mr. & Mrs. MICHAEL VESCUSO
Mr. & Mrs. BILL WACHEL
Mr. & Mrs. HERBERT WEBB
Mr. DAVID WELLS
Mr. & Mrs. DAVID WILLIAMS

Members Emeritus

Mr. & Mrs. EDGAR C. HUGHES
Mr. & Mrs. DAN M. KRAUSSE
Mr. & Mrs. PATRICK MAYBEN
Mr. & Mrs. JOHN D. WISENBAKER

Founding Board Presidents

Mr. & Mrs. JOHN D. WISENBAKER

Past Board Presidents

Mr. MICHAEL BARLERIN
Mr. & Mrs. EDGAR C. HUGHES
Mr. & Mrs. CLYDE MOORE
Mr. & Mrs. ANTHONY WAINWRIGHT
Mr. PAT MAYBEN



FORD IS THE OFFICIAL AUTOMOTIVE SPONSOR FOR THEATRE THREE.
LOCAL TRANSPORTATION FOR THEATRE THREE IS PROVIDED BY
THE DALLAS METROPOLITAN FORD AND LINCOLN-MERCURY DEALERS.



Photo: Mary Ann Sherman

Norma Young

(*Founding/Artistic Director*) was born in Dallas, reared in Oak Cliff and educated at Sul Ross State University in Alpine (which presented her with its Distinguished Ex-Student Award in 1982). Ms. Young's career took her to Houston's Alley Theatre and New York before she returned to Dallas in 1961, walked into Dallas' two daily newspapers to announce that she was planning to use a \$2,000 inheritance to "create her own work," and founded Theatre Three.

In her capacity as Artistic Director, Ms. Young has presented the works of Shakespeare, Moliere, Goldoni, Ibsen, and Chekov, among other classical writers. She has presented Dallas premieres of the most significant European writers, including Beckett, Brecht, Molnar, DeGhelderode, Genet, Anouilh and Pinter. And she has included American playwrights O'Neill, Kopit, Foote, Williams, Albee, Inge, Thornton Wilder and Elmer Rice in the list of authors she has championed in Dallas.

In addition to her extensive directing credits, Ms. Young has played many leading roles for Theatre Three, most recently appearing as Rosanna Ainsworth Jackson in the world premiere of James Duff's *A Quarrel Of Sparrows* and before that as Mme. St. Pe in Jean Anouilh's *The Waltz Of The Toreadors*. Her guest appearances have taken her to San Antonio's Guadalupe Cultural Center in *La Casa De Bernarda Alba* and Houston's Alley Theatre in her one-woman show, *The Life She Led*, about Susanna Dickinson (the sole survivor of the Alamo) and Elizabet Ney (the nineteenth century sculptress).

Ms. Young has been called "Dallas' First Lady of the Theatre" by the Dallas *Times Herald* and named one of the five "grande dames" of Texas by *Ultra Magazine*. In December 1988, with Jac Alder, she received the Dallas Historical Society Award for Excellence in Creative Arts.

IF YOU'RE NOT WEARING IT, SELL IT

You can't enjoy your jewelry if it's in your safe deposit box. Sell it for immediate cash. We purchase fine gems, diamonds and art objects. No consignment, conditions or delays. Please come in or telephone 214-358-0838 for a confidential consultation.

WALNUT COIN & JEWELRY
Exchange

3720 Walnut Hill at Marsh

Daily 10 am to 6 p.m.
Sat. 'till 3 p.m.



Photo: Mary Ann Sherman

Jac Alder

(*Executive Producer-Director*) has served Theatre Three as an administrator, actor, designer, musician, director and writer since he (with Norma Young, Robert Dracup and Ester Ragland) co-founded the theatre thirty years ago. Born in Oklahoma City, Alder earned a degree in architecture from Oklahoma University. In 1960, he moved to Dallas where he worked with Fisher and Jarvis Architects and as a designer-program writer for George Dahl. While waiting for a friend to finish reading for a role in a community theatre audition, he was

approached by Norma Young "on all fours so as not to disturb the action" and asked, "would you like to act in one of my plays?" Thus began a working courtship, which became a working marriage and the longest, strongest professional partnership in Dallas theatre.

His directing credits include the world premieres of *Safety* and *A Quarrel Of Sparrows* and such classics as *Othello*, *School For Wives*, *Arms And The Man* and his own adaptation of *The Venetian Twins*. Alder's musical credits include *A Little Night Music*, *Anything Goes*, *Side By Side By Sondheim*, *The Fantasticks* and the recent *Weill Women*, which he devised and directed.

During the '70s, Alder was Director of Drama at the University of Texas at Arlington. He currently serves as advisor to DISD's Arts Magnet High School and as a member of DISD's PACE organization (Partnership of Arts, Culture, and Education). Alder has served as chairman of the Texas Commission on the Arts Theatre Panel. He is a founding member of the Dallas Arts Combine and the Dallas Arts Coalition. He has served as a grants evaluator for the Western Arts Foundation of Santa Fe and as a panelist for the Cultural Arts Council of Houston and the Arkansas Arts Council and is a member of the Board of Texas Non-Profit Theatres.

In 1988 he received the Dallas Theatre Critics Forum Award for outstanding service to Dallas theatre. Also in 1988, with Norma Young, he received the Dallas Historical Society Award for Excellence in Creative Arts. He has most recently been nominated for the National Endowment for the Arts' Distinguished Theatre Artist Fellowship.

A salute to those who face the empty page, the empty canvas, the empty stage.

American Express Company.* In support of the arts.

*American Express Travel Related Services Company, Shearson Lehman Brothers, IDS Financial Services and American Express Bank Ltd.

© 1986 American Express Travel Related Services Company, Inc.

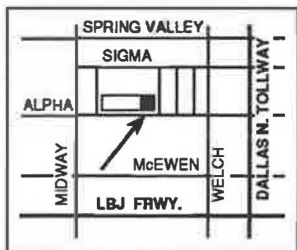
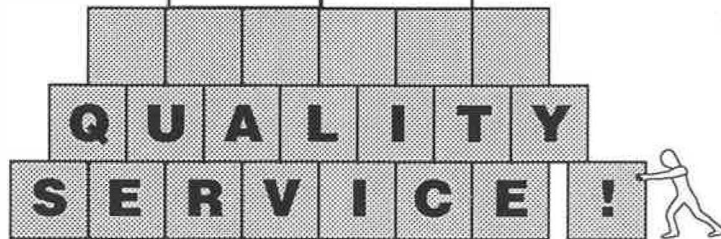




DESIGN

COPY

PRINT



CORNER OF ALPHA AND NEUTRON

alphagraphics®

Printshops Of The Future

4325 Alpha Rd. Dallas, TX 75244

Tel: 214/239-2679 Fax: 214/239-2680



New American Cafe and Bar

2621 McKinney Ave • Dallas, Texas 75204 • (214) 871-BRVO

Hours

Lunch • Monday-Friday 11:30 till 2:30 Saturday 11:30 till 3:00

Dinner • Monday-Thursday 6:00 till 11:00
Friday and Saturday 6:00 till 12:00

Sunday Brunch • 10:30 till 3:00



We're in touch with your community.

The *Dallas Morning News* is more than Dallas-Fort Worth's leading newspaper. We're also a responsible corporate citizen. Through our support and sponsorship of numerous civic and educational programs, sports events, arts and cultural activities, festivals, exhibitions and award programs, we're investing in your community. And in *you*.

Our commitment goes beyond meeting the highest journalistic standards to produce an accurate and reputable news source. As we strive to serve the needs and interests of our readers every day, our involvement extends into *your* neighborhood to help improve the quality of life in Dallas-Fort Worth . . . for *all* of us.

Community service. Just one more reason why *The Morning News* is a newspaper of distinction.

The Dallas Morning News