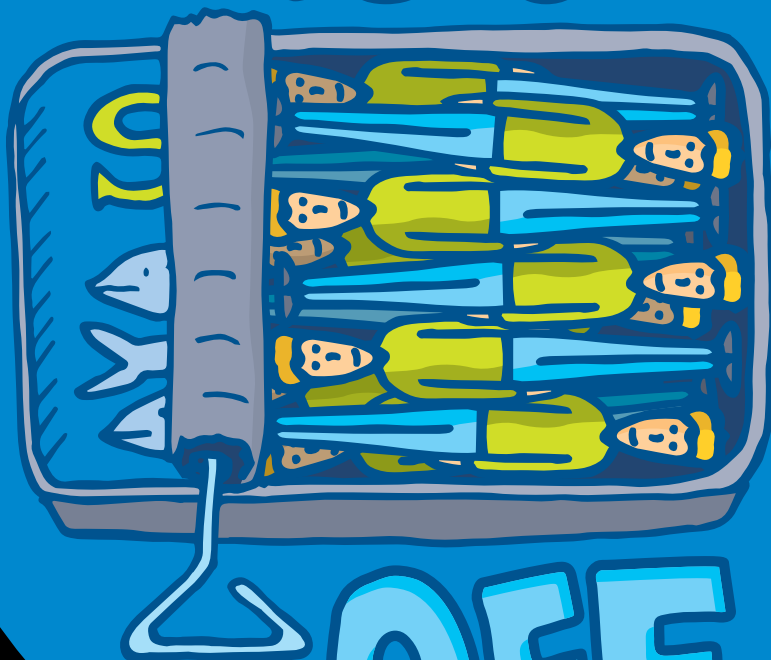


NOISES



NOV
29

THRU

DEC
22

2019

BY
MICHAEL FRAYN

DIRECTED BY
KARA-LYNN VAENI


THEATRE 3
DALLAS
theatre3dallas.com

f t i
#t3noisesoff



Imagine Broadway!

A THEATRE THREE EXCLUSIVE

JAN
30

THRU

FEB
1

2020

Starring



MARISA
DIOTALEVI



BLAKE
HACKLER



QUINTIN
JONES



CHERISH
ROBINSON

DIRECTED BY
MICHAEL SERRECCHIA

MUSICAL DIRECTION BY
MARK MULLINO

JEFFREY SCHMIDT / ARTISTIC DIRECTOR

CHRISTIE VELA / ASSOCIATE ARTISTIC DIRECTOR

GET TICKETS!

214.871.3300 x1

theatre3dallas.com



#t3imaginebroadway



Office of Arts & Culture



TACA
Theatre Arts Center of America



SHUBERT
FOUNDATION



Dallas
Commission
on the Arts



HOBLITZELLE
FOUNDATION



ART
WORLD



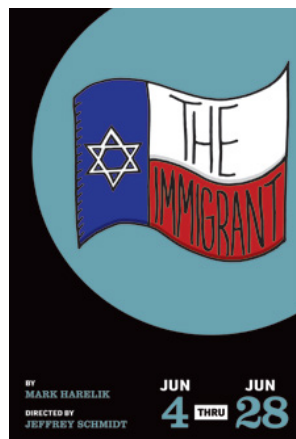
National
Endowment
for the Arts

Theatre Three is sponsored, in part, by:



JEFFREY SCHMIDT / ARTISTIC DIRECTOR
CHRISTIE VELA / ASSOCIATE ARTISTIC DIRECTOR

2019-2020 SEASON



SINGLE TICKETS ON SALE NOW!

214.871.3300 x1
THEATRE3DALLAS.COM

NOISES OFF IS MADE POSSIBLE BY...

Theatre Three is supported by its Board of Directors, by subscribers, by funds from the City of Dallas Office of Arts & Culture, The Texas Commission on the Arts, TACA, Dallas Tourism Public Improvement District, Hoblitzelle Foundation, and The Shubert Foundation. This project is supported in part by an award from the National Endowment for the Arts. A major contribution from the estate of Marlene Webb, a longtime subscriber, has established the Theatre Three Endowment Fund in support of the building and its equipment.



■ T3 PEOPLE

BOARD OF DIRECTORS

CHAIR **Mike Cluff**

BOARD MEMBERS **Suzanne Burkhead, Sid Curtis, Karen Davis, Laura V. Estrada, Harrison Herndon, Michael Jenkins, Scott Kirkman, David G. Luther, Jr., Stacy E. Marshall, Chris Rajczi, Rod Wilson**

OCA LIAISON **Linda Blase**

ADVISORY BOARD **John Strauss**

HONORARY BOARD MEMBERS **Virginia Dykes, Gary W. Grubbs, John & Bonnie Strauss**

ADMINISTRATION

ARTISTIC DIRECTOR **Jeffrey Schmidt**

ASSOCIATE ARTISTIC DIRECTOR **Christie Vela**

EXECUTIVE DIRECTOR **Charlie Beavers**

COMPANY MANAGER **Sarah Barnes**

MANAGING CONSULTANT **Merri Brewer**

PUBLICITY, MARKETING, CREATIVE
& PLAYBILL DESIGN

SoloShoe Communications, LLC

BOOKKEEPER **Infinite Tax Services**

HOUSEKEEPING **Night Line Janitorial Services**

PRODUCTION

PRODUCTION MANAGER **Max Overton**

TECHNICAL DIRECTOR **Jon Leitch**

SCENIC ARTIST **Emily Haueisen**

APPRENTICE STAFF **Claudia Jenkins**

CUSTOMER SERVICE

PATRON SERVICES MANAGER **Angelica Rollins**

PATRON LIAISON **Cindee Mayfield**

BOX OFFICE MANAGER **Wesley Farnsworth**

BOX OFFICE AGENTS **Jazzay Jabbar, Isa Flores, Brenda Rebolgar, Kyle Bradford, Emma Collwell**



Theatre Three has new Hearing Assistance devices which may be checked out without charge from the box office. These devices enhance the performance experience for audience members with any degree of hearing limitation. The box office personnel can provide you with the devices either before the show or at intermission. Theatre Three's staff and board are most grateful to the anonymous donor who allows us to offer this enhancement to our patrons.

■ ON OTHER STAGES

KITCHEN DOG THEATER

NOV 21 - DEC 15 *Queen of Basel*

THE FIREHOUSE THEATRE

DEC 5 - DEC 22 *The Wizard of Oz: The Holiday Family Concert*

WATERTOWER THEATRE

DEC 5 - DEC 22 *Cirque Holidays*

THEATRE TOO!

DEC 13 - DEC 28 *Gold, Frankincense, and Credit Card Debt*

ARTIST ADVISORY BOARD

Maryam Obaidullah Baig, Dante Flores, Gretchen Elizabeth Smith, Montgomery Sutton, vickie washington

This playbill is a publication of Theatre Three, Inc.
in support of **Noises Off** (the second show in the 2019-20 season) on the Norma Young Arena Stage.

THEATRE THREE IS A PROUD
ASSOCIATE MEMBER OF



National
New Play
Network



The Director is a Member of the
**STAGE DIRECTORS AND CHOREOGRAPHERS
SOCIETY**, a national theatrical labor union.

**"Noises Off" is presented by special arrangement
with SAMUEL FRENCH, INC.**

**Text changes were made by permission
of Michael Frayn.**



Join us for post-performance discussions following
each Thursday evening and all matinee performances.
These "T3 Talks" are hosted by Cindee Mayfield.

THEATRE THREE'S 2019 - 2020 SEASON



Noises Off

by Michael Frayn

Directed by Kara-Lynn Vaeni

THE
NORMA
YOUNG
ARENA
STAGE

ARTISTIC STAFF

SDC DIRECTOR

Kara-Lynn Vaeni

ASSISTANT DIRECTOR

Josh LeBlanc

SCENIC DESIGN

Jeffrey Schmidt

COSTUME DESIGN

Susan Yanofsky

LIGHTING DESIGN

Aaron Johansen

Lindsay Silva

SOUND DESIGN

Mason York

FIGHT CHOREOGRAPHER

Jeff Collangelo

PROPS TEAM

Ana Chavez, Isa Flores

CAST

GARRY LEJEUNE

Tadeo Martinez

DOTTY OTLEY

Kristin McCollum

LLOYD DALLAS

Michael Federico*

BELINDA BLAIR

Chris Sanders*

FREDERICK FELLOWES

Ashley Wood*

BROOKE ASHTON

Catherine D. DuBord*

TIM ALLGOOD

Mac Welch

SELSDON MOWBRAY

Adrian Churchill

POPPY NORTON-TAYLOR

Robin Clayton**

PRODUCTION STAFF

AEA STAGE STAGE MANAGER

Lauren E. Volz*

PRODUCTION ASSISTANT

Kennady Smith

RUNNING CREW

Andrew Nicolas

Daniel Hap

SPECIAL THANKS

Kris Ikejiri

Gordon Fox

John Saluson

Cindy Ernst-Godinez

* indicates members working under Actors' Equity Association contracts in this production

** indicates members who are Equity Membership candidates

Please silence your cell phones and all electronic devices. The videotaping or making of electronic or other audio and/or visual recordings of this production or distributing recordings on any medium, including the internet, is strictly prohibited. A violation of the author's rights and actionable under united states copyright law.

DIRECTOR'S NOTES

A totally personal look into my specific brain:

OK, I'm just going to be real honest right now. I like to direct new plays because I like being the first person to figure out how to do things. I don't usually re-do shows because it's already been figured out and it doesn't need my help. And this play? Comes with a ton of stage directions. It's farce! "Where's the challenge?" I thought. "This will be easy", I thought.

HAHAHAHAHAHAHAHAHAHAHAHAHA.

Friends, I have rarely been more wrong about anything than I was when I thought this show would be "easy."

It's brilliantly constructed. It's so brilliantly constructed that if you waver from the stage directions, you will fall on your face. Example: yesterday in rehearsal, on page 63, we were trying to figure out how to execute one of the moments that happens in Act II (when we are "backstage"). We couldn't figure it out until we realized that because we had cut one single line of stage business (stage directions, not text)---ONE SINGLE LINE!!! That we had decided not to do! On page FOUR!!!!---cutting that piece of business on page four resulted in chaos on page 63. A fifty nine page payoff? That's really brilliant. I am in awe of a mind that works that way.

▣ DIRECTOR'S NOTES CONT.

AND... it's hilarious. I mean, it's farce so one would hope it is hilarious. And the physical comedy IS stunningly executed by my athletic and crazy-brave-YES WE CAN cast of actors. It's also so hilarious because it's a painfully accurate depiction of humans trying to make something great in circumstances that are terrible. That's what I find at the heart of this play. The joy that can be found when people unexpectedly find themselves in horrifying circumstances and they find it in themselves to carry on. Even when they see the person they love kissing someone else. Even when they have to run up and down multiple flights of stairs in their underwear. Even when they can't find their sardines.

SO... I'm in. I'm here for it. I recognize that some of the elements of this play have not aged particularly well. (I could say the same for myself, but I have high self esteem, so I won't). But in this case, I think engaging/wrestling with/responding to those elements in the context of the production is worth it. Because so much of this play is a love letter to the best and worst parts of ourselves. So please, if you've somehow managed to read this far, double check that your phone is off, unwrap all your candy, pop those soda cans, and enjoy the show.

Kara-Lynn Vaeni

▣ CAST & CREW BIOGRAPHIES

Artistic Staff Biographies

Kara-Lynn Vaeni

(DIRECTOR) is honored to return to Theatre Three to direct this crazy awesome play. Previous works in Dallas include the world premiere of *The Manufactured Myth of Eveline Flynn* by Michael Federico and Ian Ferguson here at Theatre Three, the world premiere of *Enemies/People* by Blake Hackler, the area premiere of *Lela & Co* by Cordelia Lynn, both at Second Thought and the National New Play Network Rolling Premiere of *Reykjavik* by Steve Yockey at Kitchen Dog Theatre. Upcoming: *SHAPE*, written and directed by Kara-Lynn at The Kitchen Theatre Company in NY, *The*

Children by Lucy Kirkwood at Stage West and *An Evening of Czech Opera* in Prague, Czech Republic. Faculty at Yale University and Southern Methodist University. Proud member of the Society of Directors and Choreographers.

Josh LeBlanc

(Assistant Director) is a junior in the BFA Theatre Studies program at Southern Methodist University. He most recently was in their production of *we, the invisibles*, as well as directing a student production of *4.48 Psychosis*. This is his first production with Theatre Three and would like to thank Kara-Lynn for the incredible opportunity, as

well as his friends and family for their undying love and support.

Jeffrey Schmidt

(SCENIC DESIGNER) is an actor, director, designer and writer with a 25-year history in theatre, film and television. He grew up in Whitehouse, Texas. Currently, he serves as the Artistic Director of Theatre Three in Dallas which just closed their 57th Season. His affiliation with Theatre Three goes back to 90's in many different capacities. His passion is for new work and more specifically new work from Dallas and Texas based artists. He has been involved in more

▣ CAST & CREW BIOGRAPHIES CONT.

than 20 world premiere productions many of which were written by Dallas artists. His next season at Theatre Three will include 3 more world premieres by Dallas artists. Additionally, he is the Executive Artistic Director of The Drama Club and served as Artistic Director of Moonwater Theater Company for three years. He is a member of Actor's Equity Association and is represented by the Mary Collins Agency. Upcoming projects include designs for Shakespeare Dallas and Junior Players.

Susan Yanofsky

(COSTUME DESIGNER)

Susan's recent designs include *Sink* at the Dublin Fringe Festival, *Hecuba* at the Dublin Theatre Festival and *X and Homos*, *Or Everyone in America* at the Lir Academy. Designs in Dallas include *Les Liaisons Dangereuses* at Theatre Three, and *The Royale* at Kitchen Dog Theater. Other Dallas productions include *The Minotaur* and *The Birds*. Productions in Boston include *Red*, *The Man Who Came to Dinner*, *Breaking Legs*, *Sideshow*, *Hair*, *Jesus Christ Superstar*, *Ragtime*, and the *Rocky Horror Show*. Susan is delighted to return to Dallas and Theatre Three after receiving her MFA in Stage Design at Trinity College Dublin.

Aaron Johansen

(LIGHTING DESIGNER)

is pleased to be back with Theatre Three, having most recently designed *Dracula*, *Raptured*, *Solstice: A New Holiday Adventure* and *Dr. Jekyll & Mr. Hyde*. Previous collaborations have included: Dallas Theater Center; Kitchen Dog Theater (Company Member); Dallas Children's Theater; Second Thought Theater (Artistic Associate/ Resident Lighting Designer); Stage West; Uptown Players; Cry Havoc Theater Company; Cara Mía Theatre Co and Sweet Tooth Hotel Art installation. Follow me and my work on Instagram @Famoustrendywizard Enjoy the show!

Lindsay Silva

(LIGHTING DESIGNER)

originating from Mt. Pleasant, TX, is a MFA Stage Design graduate from Southern Methodist University. Previous SMU designs include *A Bright New Boise*, *In the Blood*, *Stupid Fucking Bird*, and *Our Town, the Opera*. Other work includes *Madagascar Jr.* (A.D. Players), *Touched* (Rogue Productions), *A Secret Garden* (Brick

Road Theatre), *Peter Pan Jr.*, *Into the Woods*, *Charlotte's Web* (Artsview Children's Theatre). She also designed *Split Second*, *Sistas: The Musical*, and *Single Black Female* (Jubilee Theatre).

Mason York

(SOUND DESIGNER)

is pleased to return for his second production with Theatre Three! Mason is a director, sound designer, and educator, with an interest in adapting sound and video installations into challenging spaces.

Recent credits include:

Kitchen Dog Theater – *Reykjavík* (Sound Designer), Theatre Three – *The Manufactured Myth of Eveline Flynn* (Sound Designer & Engineer), Shakespeare Dallas – *Othello* (Director). Education: UT Dallas – BA, Art & Performance; MFA, Arts & Technology. Special thanks to Lauren York for her constant support and encouragement.

Lauren E. Volz

(STAGE MANAGER) is a freelance stage manager and master electrician in the DFW Metroplex. She graduated with a BA in Theatre Production and Telecommunications from Ball State University,

❑ CAST & CREW BIOGRAPHIES CONT.

then happily traded the snowpocalypse-prone winters of Indiana for 100-degree summers of Texas. Lauren is the Assistant Lighting Director for the Dallas Opera (*The Magic Flute*, *The Golden Cockerel*). Select credits: *Evil Dead: The Musical* (Ball State University), *The Minotaur* (Theatre Three), *Titus Andronicus* (Shakespeare Dallas), Cedar Lake Contemporary Ballet, L-E-V, and Dance Theatre of Harlem (Jacob's Pillow Dance Festival). Special thanks and love to Chaz and their four-legged children, Tauriel and Bernie.

Cast Biographies



Tadeo Martinez
(GARRY LEJEUNE)
was born and raised in Monterrey, Mexico. He recently graduated with a BFA in Theatre from Southern Methodist University, where you

may have seen him as Moritz in *Spring Awakening the Musical*, Cousin Julio in *The Motherf*cker with the Hat*, or Guildenstern in *Rosencrantz and Guildenstern are Dead*. He is thrilled to be making his Theatre Three debut!



Kristin McCollum
(DOTTY OTLEY)
was last seen on the Theatre Three stage post-apocalyptically thriving in *On the Eve*. Around town she has worked with Echo Theatre, Kitchen Dog Theater, Water Tower Theater and Second Thought Theater. She is represented by the Kim Dawson Agency, a docent at the Dallas Museum of Art and the wildly proud mama bear of Manon and Lily. Huge thanks to KLV and T3 for letting her play with these talented peeps!



Michael Federico
(LLOYD DALLAS) last performed at Theatre Three as Henry Jekyll in *Dr. Jekyll and Mr. Hyde*. He's worked at theaters across DFW, including Dallas Theater Center, Stage West, and Kitchen Dog Theater, where he's an Artistic Company Member. Michael wrote Theatre Three's recent production of *Dracula*, and wrote the book for last season's *The Manufactured Myth of Eveline Flynn*. Michael has a BFA in Theater from SMU and an MA in Humanities from UTD.



Chris Sanders
(BELINDA BLAIR) feels honored to be a part of this company of *Noises Off*, and for this to be their



Preferred Technology Solutions

Did you know that Theatre Three uses
Preferred Technology Solutions as our trusted technology partner?
They do great work and we ask that you consider meeting with them.

The fine folks at PTS will come to your offices and discuss how technology can help you reach your goals. And when they are there, you can discuss any issues and/or questions that you may have with them.

Their expertise is supporting the technology needs of small and medium size businesses and they may be a perfect match for you. They are for us.

We have found them to be very reliable, dependable and honest.

***And if you mention Theatre Three when you contact them,
they will provide you with a free Technology and Security review.***

Please call 972-644-1992 or email sales@preferredtechnology.com

Managed IT –Cloud Computing–Cyber Security– VoIP–Surveillance

www.preferredtechnology.com



*



Frost
BANKING
INVESTMENTS
INSURANCE

MEMBER FDIC

*FROST CUSTOMER

■ CAST & CREW BIOGRAPHIES CONT.

debut at Theatre Three. Their theatre credits include *Frankenstein*, *A Christmas Carol* [2016] (Dallas Theater Center), *The Learned Ladies*, *Much Ado About Nothing*, *Timon of Athens* (Shakespeare Theatre of New Jersey), *Our Town* (George Street Playhouse), *Artist Descending a Staircase* (Amphibian Stage Productions), *Obama-ology*, *Split Second* (Jubilee Theatre), *Straight White Men* (Second Thought Theatre), *the World Premiere of The Monarch* (Soul Rep and Echo Theatres), and *Tony n' Tina's Wedding* (Count Basie Theatre). Chris earned their BA in Theatre from Kean University and their MFA in Acting from Southern Methodist University. Chris also received training in Improv at Stomping Ground Comedy Theatre. Chris Sanders is represented by the Mary Collins Agency.



Ashley Wood
(FREDERICK FELLOWES)
last appeared at Theatre

Three in *Adding Machine*. Other T3 productions include *Susan and God* (Barrie), *The Novelist* (Frank), *Hands on a Hardbody* (Benny), *See What I Wanna See* (Priest), *Don't Dress for Dinner* (Robert), *The Devil's Disciple* (Dick), *Old Wicked Songs* (Stephen), *The Coconuts* (Harpo), and the mainstage production and subsequent 3-year continuous downstairs run of *I Love You, You're Perfect, Now Change!* (Man #1). Ashley has also worked at Dallas Theater Center, WaterTower Theatre, Stage West, Circle Theatre, Contemporary Theatre of Dallas, Kitchen Dog Theatre, Second Thought Theatre, Echo Theatre, and Remy Bumpo Theatre in Chicago. Favorite roles include James in *Children of a Lesser God*, Shannon in *The Night of the Iguana*, and Bernard in *Boeing-Boeing*.



Catherine D. DuBord
(BROOKE ASHTON)
is thrilled to be back at Theatre Three, after first appearing in *Susan and God*, *The Farnsworth Invention* and *Popcorn*.

B.F.A. in Acting from SMU. NYC: The Modern Stage. Selected Dallas/Ft. Worth: Stage West, One Thirty Productions, Circle Theatre, WingSpan, Kitchen Dog, Shakespeare Dallas, Contemporary Theater of Dallas and Classical Acting Company. As always, much love to Mom, Dad and Guthrie. Ms. DuBord is represented by The Mary Collins Agency.



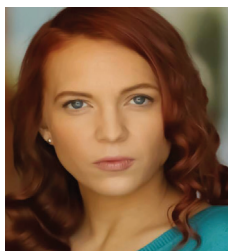
Mac Welch (TIM ALLGOOD) This will be Mac's first production acting with Theatre Three, but not his first production. Last year, he assistant directed a production of *The Manufactured Myth of Eveline Flynn*, which was written by his current castmate, Michael Federico. He has done a lot of directing and assistant directing lately, but is excited to get back on the acting train. He is currently in his last year at SMU, and plans on staying to do theatre in Dallas for a short while following graduation. This is his first professional acting job, so he is very excited to share what he has to offer the theatre community.

CAST & CREW BIOGRAPHIES CONT.



Adrian Churchill (SELSDON MOWBRAY, Fight Captain) is a veteran theatre artist first appearing on a professional stage in 1985. His international credits include “*Head á Teté*” in Singapore, Canada and Brunei and “*The Truth About My Father*” at the Toronto International Fringe Festival. He has appeared on stages across Canada and the United States (all of the lower 48

states) and is happy to call Dallas home where he has worked with Theatre Three (*The Farnsworth Invention*) Kitchen Dog Theatre (*Macbeth*, *The Royale*) Shakespeare Dallas (*Julius Cesar*, *Cymbeline*, *The Winter's Tale*) Upstart Theatre (Pinter's “*One For The Road*).



Robin Clayton (POPPY NORTON-TAYLOR) *Noises Off* is Robin's

Theatre Three debut. She was last seen as a Witch in *Macbeth* at Shakespeare Dallas. Last fall she performed Off-Broadway in *Inferno: Fire at the Cocoanut Grove*. Some of her favorite roles include Sylvia (*Sylvia*), Olive (*Spelling Bee*), Honey (*Who's Afraid of Virginia Woolf*), Mother (*Parents Evening*), Mary (*How the Other Half Loves*), Perfect (*Columbinus*), Brooke (*Noises Off*), Annelle (*Steel Magnolias*) and Penny (*Hairspray*).

CIRQUE HOLIDAYS

A THEATRICAL CIRCUS SPECTACULAR



LONE STAR CIRCUS®
A CO-PRODUCTION
WITH LONE STAR CIRCUS

**December
5 – 22, 2019**



**WaterTower
Theatre**
at the Addison Theatre Centre

15650 ADDISON RD

ADDISON, TEXAS 75001

BOX OFFICE: (972) 450 - 6232

WATERTOWERTHEATRE.ORG

JOIN US. AFTER THE SHOW. TRICK PONY.



2823 MAIN STREET. DEEP ELLUM. 75226



Metropolitan Arts Media
ContextDFW.com TheaterJones.com

Introducing a new arts media organization for North Texas

News, reviews, interviews, calendar listings and feature stories on the performing and visual arts. Join us for a new era of arts journalism

Metropolitan Arts Media, Inc. operates as a non-profit organization under code 501(c)(3)

THE LEGACY FUND *Legacy Donors*

\$75,000

*The John & Bonnie
Strauss Foundation*

\$50,000

Janet Spencer Shaw

\$25,000

Dianne & Marion Brockette
David G. Luther, Jr.

\$10,000

Stan Graner & Jim McBride
Sally Hansen
Ms. Elizabeth Rivera
The Eugene McDermott Foundation

\$1,000 – \$9,999

Ida Jane & Doug Bailey
James Lee Blackwell
Dr. Jo Ellen Bogert
Mr. Bill Bond
Mason Brown Family Foundation
Ms. Suzanne Burkhead
Meriam Calabria
George & Jo Ann Caruth
Kay Champagne
Andrea "Sid" Curtis
Carol L. Croy
Dede Duson
Cathy & Bob Estrada
Laura V. Estrada
Richard Ferguson
Elaina & Gary Gross
Gary Grubbs
Craig A. Haynes
Mr. & Mrs. John Howell
Nancy & Solomon Israel
Mrs. Jo Kurth Jagoda
Ms. Emily Jefferson
Veletta Forsythe Lill
& John C. Lill
Lydia MacKay
Wilson & Gwyn Mason
Tom & Phyllis McCasland
Ms. Elya Naxon
Paul & Joan Ridley
Dana Whitehead Rigg
Eileen & Harvey Rosenblum
Ken & Susan Swan Smith

Daniel Tamez
Patricia A. Vaughan
& Barbara S. Turner
Charlie & Laura Weems
Scott & Susan Williams

\$500 – \$999

Anonymous
Ann Abbe
Robert & Diane Alder
Alan & Ann Bogdanow
Gabe & Carol Dallal
Bobby & Anne Fincher
Richard & Rozelle Gilman
Ms. Pauline Graivier
Fred J. Gross Memorial Charitable
Fund of the Dallas Jewish
Community Foundation
Gregory Hahn
Mary Anne Hardison
Barbara K. Materka
Sam & Barbara McKenney
Joseph & Lucille Montag
Gift in honor of Janet Shaw
Frank Sulzbach
Weathers Family Charitable
Nina Works
ExxonMobil Foundation

\$250 – \$499

Ralph & Jo Blackburn
James D. Brown & Jerry A. Knight
Bill & Fran Carter
Michael & Christine Cluff
Ms. Connie Coit
Mary Collins Agency
Mr. & Mrs. Michael E. Crossley
Michael L. Dailey
John S. Davies & Lou Michaels
Linda M. Lee & Jay Isham
Bill & Elaine Johnson
William & Cynthia Meier
Chris Rajczi
Judy & Jack Schecter
Gary & Genie Short
Walt & Gigi Steele
Van Pelt & Associates
Chris Westfall &
Lisa-Gabrielle Greene

\$10 – \$249

Mitta Angell
Diana Behannese
Chad Barton
Ms. Frances Blatt
Martha Ann Cates
Merri Brewer & Jeffery Crain
Katherine Church
Diana Clark
Mr. Raymond J. Clark
Zonneke Cross
Karen Davis
Chuck Donaldson
Jim Dykes
Mrs. Francis Estes
Robyn Flatt
Richard L. & Kay Fleming
Gregory Gerardi
Lane Gorman
Bob & Marilyn Halpin
Diane Haselroth
Cherry Haymes
Ms. Jean B. Hecht
Tena Hehn
Barry Herbert
Judy Hollis
Ms. Jane Hook
KEMB
Jeff & Cora Hurst
Steve Krant
Eric Laub
Jack & Jo Ann Leavitt
Grace McDonald
Ms. Michelle Mew
Ms. Lisa C. Miller
Erika & Joel Nannis
Judy & George Nassif
Ellen Osburn
John & Julie Parolisi
Bill Pervin & Susan Chizeck
Ms. Susan Read
Durel & Barbara Reid
Lynne Richardson
Ms. Ruth May Rydell
Mr. & Mrs. Gregory Shinn
Mr. Michael Skotnik
Jean & Neal Smith
Ete Szuts
Lane Gorman Trubitt, PLLC
Barbara Turner
Benjamin & Shelby Vincent
Mrs. Helen C. Walker
Alan & Gloria Weinblatt
Rod Wilson
R.G. Zachariadis

**To give to the Jac Alder Legacy Fund, please
contact Theatre Three at 214-871-3300**

Updated 11/20/2019

Mr. Jerry Knight
 Carol & George
 Kondos
 Steve Krant
 Michael & Janine
 Mason
 Ms. Judy Mathis
 Mr. Phil Harvey &
 Ms. Shannon
 McGrann
 Anonymous
 Erika & Joel
 Nannis
 Dr. Joan M.
 Tamez
 Mr. & Mrs. Alvin &
 Nancy Willman
Drayton Insurance
Brokers, Inc.
ExxonMobil
Foundation

**BACKSTAGE
 BENEFACTORS**
\$125–\$249

Charles & Susan
 Arnett
 Mr. James Bigner
 Craig Boleman &
 Kass Prince
 Mr. & Mrs.
 Gregory K.
 Boydston
 Michael &
 Christine Cluff
 Carol Jablonski &
 Michael Dill
 Ruth McAlester-
 Duff

Bob & Janet
 Hader
 Robert & Barbara
 Herbison
 Mr. Mark Jacobs
 Sue & Phil John
 Melinda & Jim
 Johnson
 Bill & Elaine
 Johnson
 Jack & Jo Anne
 Leavitt
 Ms. Carlene
 Peal-Sconce
 Susan Chizeck &
 Bill Pervin
 Rodolfo E. Salas
 Gregory &
 Victoria Shinn
 Amanda &
 Michael West
 Mr. Richard Wills
 Paul & Alison
 Wright
Preferred
Technology
Solutions
Maguire Oil
Company
ExxonMobil
Foundation

FRIENDS
\$50–\$124

Anonymous
 Timothy & Laurie
 Ackermann
 David & Marilyn
 Adler

John Alexander
 Karen & Mark
 Anderson
 Carl & Jeanette
 Benson
 Henry & Annie
 Bivins
 Mr. James Lee
 Blackwell
 Ms. Linda Blase
 Dr. Jo Ellen Bogert
 Judge Tena
 Callahan
 H.E. & Carol
 Canada
 Brendon Chenault
 Zonneke Cross
 Dr. & Mrs. John &
 Bonnie de Passe
 Cheryl Ehmann
 Lee & Paul Eilbott
 Miss Isa Flores
 Mrs. Catalina
 Garcia
 Doug & Linda
 Gilpin
 Shirley Ann
 Grannan
 Carol T. Gregston
 Gerald & Francis
 Hare
 John & Sandi
 Hebley
 Courtney Key
 Mrs. Kelly Lane
 Betsy Lewis
 Ms. Elly Lindsay
 Harriet A. Little
 Paul McLin

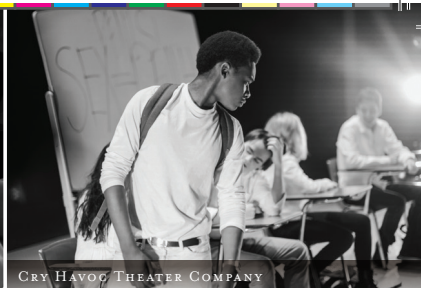
Rani Morrison &
 Gary Grubbs
 Mr. & Mrs. Jim
 Nugent
 Mark Oristano
 Mitchell Perry
 Mary Petterborg
 Dr. & Mrs. Peter
 C. Ray
 Durel & Barbara
 Reid
 Ms. Ruth May
 Rydell
 Maricella Sanchez
 Maxwell Scarlett
 Kent Smith
 Marty Steine &
 Judy Sperry
 Kevin & Linda
 Spurrier
 James F. Strunc &
 Mary Anne
 Genrty-Strunc
 Ken & Anita
 Wrobel
Trinbrook Fund of
Communities
Foundation of
Texas

**IN KIND
 DONORS**

Sid Curtis
 SoloShoe
 Communications,
 LLC
 BreadWinners



CHAMBER MUSIC INTERNATIONAL



CRY HAVOC THEATER COMPANY



CHAMBERLAIN PERFORMING ARTS



DALLAS CHAMBER SYMPHONY

I BELIEVE CREATIVITY IS THE VERY ESSENCE OF LIFE.
IT UNITES US, INSPIRES US, CHALLENGES AND CHANGES US.

I AM TACA – THE ARTS COMMUNITY ALLIANCE.



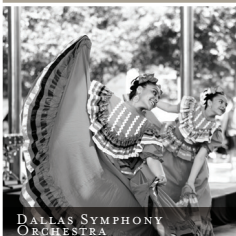
DALLAS CHAMBER SYMPHONY



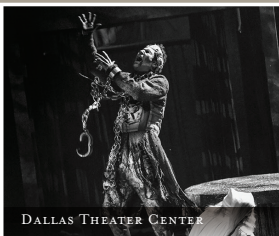
DALLAS BLACK DANCE THEATRE



DALLAS CONTEMPORARY



DALLAS SYMPHONY ORCHESTRA



DALLAS THEATER CENTER



IRVING SYMPHONY ORCHESTRA

LEARN MORE AT TACA-ARTS.ORG